

DENTAL PLATES

REPAIRED AND RELINED WHILE-U-WAIT

GAS OR PENTATHOL
 FOR EXTRACTIONS AT THE SAME PRICE

 18 MONTHS
 TO PAY
 FIRST
 PAYMENT
 JUNE, 1960

 DIFFICULT
 CASES
 WELCOMED
 PENSIONERS
 WELCOMED

 COMPLETE DENTAL SERVICE
 • X-ray • Partial • Fillings • Pyorrhea Treatment
 OPEN EVENINGS AND SATURDAY—NO APPOINTMENT NECESSARY

SE HABLA ESPANOL

DR. TARR
 CREDIT DENTIST

FA 8-0250
 For
 Low Prices

2418 TORRANCE BLVD., NEAR CRENSHAW

GROUND FLOOR

No License? Figure on a Stretch in Jail

 Judge Donald Armstrong, number of drivers being
 impatient over the growing haled into court with revoked

 or suspended-license viola-
 tions, today told The Press
 these drivers can expect to
 go to jail from now on.

 Four drew sentences of
 five days each recently.

 Armstrong also pointed out
 that the court may impound
 a car for six months when
 the driver is convicted of
 driving with a suspended or
 revoked license. Cost of the
 storage will be charged to the
 owner.

 The driver may be fined up
 to \$500 or spend six months
 in jail or both, the judge
 noted in declaring his stricter
 policy.

DIAL-A-PRAYER

NON-DENOMINATIONAL

FA 8-3903

COURTESY OF

HALVERSON-LEAVELL
MORTUARY - TORRANCE

Democrat Convention to Use Mammoth Telephone System

 Pacific Telephone engi-
 neers, technicians, and equip-
 ment installers, numbering
 more than 250, have been
 working since February,
 1959, to design and build the
 mammoth communications
 system which will carry the
 big story of the Democratic
 National Convention to the
 world.

 According to local tele-
 phone Manager Dick Pyle,
 the telephone, television, radio,
 and teletypewriter gear

 installed at the arena could
 handle the business of a city
 of 25,000.

 "All the equipment is
 standard and will be used in
 our normal expansion pro-
 gram when the convention is
 over," Pyle said.

 He estimated 22,000 phone
 calls a day will be made over
 equipment especially install-
 ed to handle the business of
 the convention, and listed
 these installations either al-
 ready in place or to be made
 by his company before July 11:

 4000 telephones.
 25 switchboards, manned by
 85 operators.

 350 teletype machines for
 newsmen.

20 telephoto channels.

 46 television dishes, or
 sending antennas.

 123 additional cable circuits
 for television.

350 public telephones.

 All this would be connect-
 ed with more than 12,000
 miles of wire and cable, most
 of it already in place, the
 manager said, the calls being
 fed through equipment at
 seven exchange offices.

 Telephone-wire facilities be-
 tween the arena and six
 hotels where delegates will
 live, have been expanded
 with the largest expansion at
 the Biltmore, headquarters
 for the convention. Here the
 incoming and outgoing capac-
 ity has been boosted by ad-
 dition of 2700 telephone cir-
 cuits.

 Twenty-five switchboards,
 the largest at the Democratic
 National Committee head-
 quarters at the Biltmore, will
 be manned 24 hours a day
 by 85 skilled operators.

 In preparation for the
 convention volume of tele-
 phone calls, a new prefix,
 Richmond 6, has been desig-
 nated as the arena prefix.

 Most long-distance calls
 will be by direct dialing, and
 in anticipation of a record
 number to all parts of the
 country, toll offices in Glen-
 dale and Huntington Park
 and the prefix offices of Nor-
 mandy, Pleasant, Madison,
 Dunkirk, and Richmond will
 be ready to transmit calls
 along with the big communi-
 cations center at 433 S. Olive
 St.

 Television equipment in-
 stalled for the convention will
 double the normal capacity
 maintained in Los Angeles
 for all network and local
 shows, Pyle said. Forty-eight
 television microwave circuits
 will be mounted on the roof
 of the Coliseum. They will
 beam television programs
 from the arena to Pacific's
 television operating center at
 434 S. Grand Ave. and to the
 network master controls in
 Hollywood.

 In addition, 123 cable cir-
 cuits have been installed to
 connect the Arena with the
 Biltmore, other hotels and to
 augment Pacific's existing
 television routes.

 Two telephone message
 centers will be installed by
 Pacific at the arena and at
 six hotels and will be manned
 by a specially trained corps
 of 80 telephone girls and men.

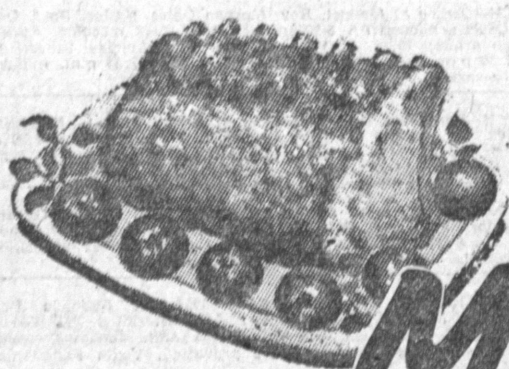
 In these centers, delegates,
 committee members, and
 members of the press may re-
 ceive incoming calls over a
 direct outside telephone line
 not associated with conven-
 tion switchboards.

 At the arena some calls will
 be delivered, others will be
 flashed on screens by closed
 television, and others will be
 posted.

 Information desks will be
 maintained by Pacific at two
 points in the arena, with the
 attendants prepared to
 answer questions about Los
 Angeles, street addresses,
 points of interest, bus, train
 and aircraft schedules, hotel
 locations, and the wide var-
 iety of questions such a gath-
 ering will generate.

 Daily, the manager said,
 Pacific will bring out special
 telephone number bulletins,
 with names, addresses and
 phone numbers of all dele-
 gates, convention functionar-
 ies, and committee personnel.
 These bulletins will be de-
 livered to all delegates, com-
 mittee people, and members
 of the press each morning.

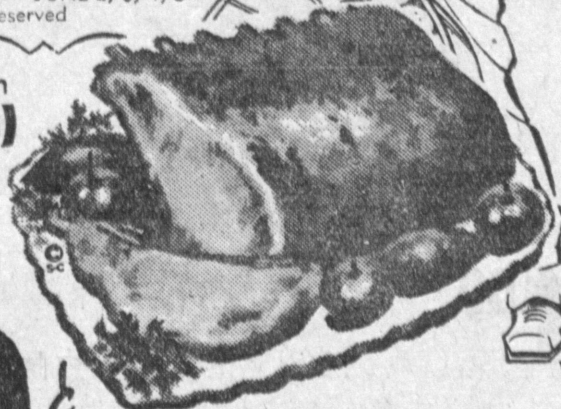
 Pacific will have a staff of
 214 on hand at the arena
 and the Biltmore, including
 60 technicians who will keep
 phones, television, and other
 apparatus operating.

**TORRANCE
 PRESS
 WANT ADS
 DA 5-1515**

**Shop At Food Giant ...
 More Money In Your
 Pocket ...**
**MORE MEAT
 ON YOUR TABLE**
**and you get
 BLUE CHIP STAMPS, TOO!**

C&H • Pure Cane

SUGAR
39¢
 5-lb. BAG

 EASTERN • Extra-Value Trim
Fresh (Not Frozen)
PORK LOINS
39¢
 Full Rib Half

 You'll love the wonderful flavor of these
 fresh lean loins! All our loins are Extra-
 Value Trimmed before weighing to give
 you more meat for your money!

 EASTERN • Meaty
PORK LOINS
 Loin Half **45¢**

 All Varieties
**CAMPBELL'S
 SOUP**
2 29¢
 Tall 10 1/2-oz. Cans

REDWOOD EMPIRE • Spiced Just Right

Apple Sauce

DEL REID • Sweet Breakfast Favorite

Grapefruit Juice

FGP • In Heavy Syrup

Boysenberries

MA PERKINS • From Red, Ripe Tomatoes

Tomato Juice
26-oz. Jar **25¢**Jumbo 46-oz. Can **29¢**Tall 303 Cans **25¢**Jumbo 46-oz. Can **25¢**
 FOOD GIANT'S • OWN
Salad Oil
39¢
 Full Quart Bottle

FOOD GIANT'S • Fresher, Leaner

GROUND BEEF

 Ground fresh hourly in our
 spotless meat kitchens for ex-
 tra flavor and freshness! You
 can taste the difference!

GROUND CHUCK **59¢**
GROUND ROUND **69¢**
39¢

ARMOUR'S • Fresh Frozen • Ready-to-Cook

JR. TURKEYS

 4 to 8-lb. Average
 Perfect for your
 roasting or out-
 door barbecue!
 Keep an extra
 on hand in the
 freezer.

49¢

U.S.D.A. "Choice" or Food Giant's "Banquet Perfect"

ROUND or SWISS
STEAK

 Our center-cut Round Steak and
 boneless Swiss Steak are family
 favorites for hearty eating!

77¢
GENUINE STEER • Tender
BEEF LIVER

 Sliced or by-the-piece. Comes
 packed in cryovac to preserve
 freshness.

49¢

GULF CAUGHT • 10 to 12 Per Pound

JUMBO SHRIMP

 Just the right size for frying
 or super-size shrimp cocktail!

\$1.09
1.09

 Fill your freezer
FLAV-R-PAC • FROZEN

Northwest's Finest

Cut Beans
Corn On The Cob
Mixed Vegetables
Broccoli Spears
Fordhook Limas
Orange Juice
5

Pkgs. or Cans of Your Choice

KRAFT'S
Velveeta
Cheese

 2-lb. Loaf **69¢**
SWIFT'S • Meaty
BEEF
STEW
43¢

Includes "Use Off" Label

24-oz. Can

U.S.D.A. "Choice" or F. G. "Banquet Perfect"
RUMP ROAST

 Extra-Value Trimmed and
 extra easy to carve!

77¢
FOOD GIANT'S "Banquet Perfect"
SLICED BACON

 Sizzle-crisp and delicious, serve
 bacon every morning! 1 lb. pkg.

49¢
GENUINE STEER • Tender
BEEF LIVER

 Sliced or by-the-piece. Comes
 packed in cryovac to preserve
 freshness.

49¢

GULF CAUGHT • 10 to 12 Per Pound

JUMBO SHRIMP

 Just the right size for frying
 or super-size shrimp cocktail!

\$1.09
1.09
DANISH • Flaky • Frozen
Coffee Cake

Almond or Cinnamon

 Reg. 11-oz. Pkg. **49¢**
FOOD GIANT'S OWN
Detergent

 Giant Pkg. **49¢**
CHIFFON • White or Pink
Facial Tissue
4 400 Count Pkgs. \$1
MARKET BEST • Pure
Preserves

 3 20-oz. Jars **\$1**

 Or Apple or Grape Jelly
 Choice of Assorted Varieties

SLICED • Ruby Red
LIBBY BEETS

 6 Tall 303 Cans **\$1**
HUNT'S • In Tomato Sauce
PORK & BEANS

 2 Tall 300 Cans **25¢**

U.S. NO. 1 RED BLISS

POTATOES 10 LBS. 29¢

IMPERIAL VALLEY

CANTALOUPE

 Sweet and Luscious **7¢**

CRISPY NUTRITIOUS

CARROTS 2 Bunches 15¢

 In Gardena
 14990
 S. Crenshaw
 at Compton
 Blvd.

 In Hawthorne
 423
 S. Hawthorne
 Blvd. at 132nd

 In Inglewood
 11202
 S. Crenshaw
 Blvd. At Imperial

 In Los Angeles
 11208
 S. Western
 Ave. at Imperial

 In Manhattan
 Beach
 2400
 Sepulveda
 Blvd. at Marine

 In North
 Torrance
 4848
 W. 190th St.
 at Anza

 In Torrance
 3731
 Pacific Coast
 Hwy. at Hawthorne

 In San Pedro
 28849
 S. Western
 Avenue

**FOOD
 GIANT**