

Groups Forming to Wipe Out Death Penalty

Organization of a Los Angeles County Committee Against the Death Penalty, with offices at 8929 Wilshire Blvd., Beverly Hills, was announced today. Its purpose is circulation of

initiative petitions to place capital punishment on the November ballot.

Similar committees have been organized in Northern California and in San Diego. Opponents of the death

penalty in all major cities are participating in the initiative campaign.

A statement issued by the group said, "The execution of Caryl Chessman has given forceful impetus to the activities of thoughtful citizens determined to abolish the barbaric institution of capital punishment."

"Prosecutors have had their say on the death penalty in this state, but the issue has never gone to the people. Our committee believes the November presidential election with its mass turnout of voters is the best possible time to end capital punishment."

The committee may be reached by telephoning either OL 2-6886 or OL 2-8286.

Use classified. Call DA 5-1515.

VOTE for VINCENT L. ISHAM



REPUBLICAN CANDIDATE FOR CONGRESS

- LOCAL REALTOR—Owns Loyola Realty Co.
- ACTIVE CITIZEN—Civil Defense, Exchange Club, Chamber of Commerce, P.T.A., Chairman Troop 779, serving on Court of Ethics of Inglewood Board of Realtors.
- TRUE REPUBLICAN—Loyal American.

ISHAM FOR CONGRESS!

A LIFETIME REPUBLICAN

NOT A "JOHNNY COME LATELY"

DENTURES

- IMMEDIATE DENTURES
- REPAIRS... RELINES
- NEW MAGNETIC DENTURES
- Pensioners Welcomed

Extractions with Sleep

SAME LOW PRICES
(We Arrange)

OPEN EVENINGS
AND SATURDAYS



DR. WHARTON
Member California
Society of
Dental Surgeons

NO
MONEY
Down
18 Months
to Pay

DR. WHARTON
NO OTHER DENTIST IN OFFICE

1308 SARTORI DOWNTOWN TORRANCE
ABOVE McMAHAN'S FURNITURE

FA
0-0707
FOR PRICES
IN ADVANCE



REUNION—Geraldine Simpson, 4323 West 176th St., is reunited with son, Kenneth, flown home from Air Police Squadron in

Omaha by "Truth or Consequences" TV show. They are shown with Bob Barker, program's announcer. Show slated Wednesday.

Use classified ads for quick results. Phone DA 5-1515.

King's Name May Be Written in on Congressional Ballot

Seventeenth Congressional District Republicans wishing to cast their vote for Rep. Cecil R. King in the June primaries were assured today that a write-in of his name on their ballot would be counted as an official vote by the registrar of voters.

The announcement was made by Hugh P. Doherty, South Bay businessman and chairman of the Republican Committee for Cecil R. King.

"While I strongly favor the two-party system, and as a Republican I vote for my party," Doherty declared, "in this district one must take into consideration the qualifications and results of the candidate who has a proven record of outstanding service for the best interests of all its people, as has Congressman King, and I urge that Republicans as well as Democrats return him to office in the primary election."

Although King's name will not be found on the Republican ballot," Doherty stated that "all we need do is to be sure to take pen or pencil to the polls with us and write in the name 'Cecil R. King' on election day and our vote will be officially counted in favor of the veteran legislator."

King, who has not been able to take an active part in his re-election campaign due to his official duties in Washington, is standing for election to his 10th term in Congress.

Italian Voter Group

Endorses Kenny Hahn

Supervisor Kenneth Hahn has been endorsed for re-election by the Italo-American Voters Inc., an organization of leading United States citizens of Italian extraction.

Use classified. Call DA 5-1515.

Wall to Wall Carpet

CUSTOM DRAPERIES

And All Home Furnishing Needs



Aluminum
Screens,
Doors and
Awnings

FORMICA

COMPLETE LINE OF FLOOR COVERINGS
WINDOW SHADES, CUSTOM DRAPERIES
CARPETING, VEN. BLINDS & VERTICALS

722 AVALON BLVD.

Wilmington

FREE ESTIMATES

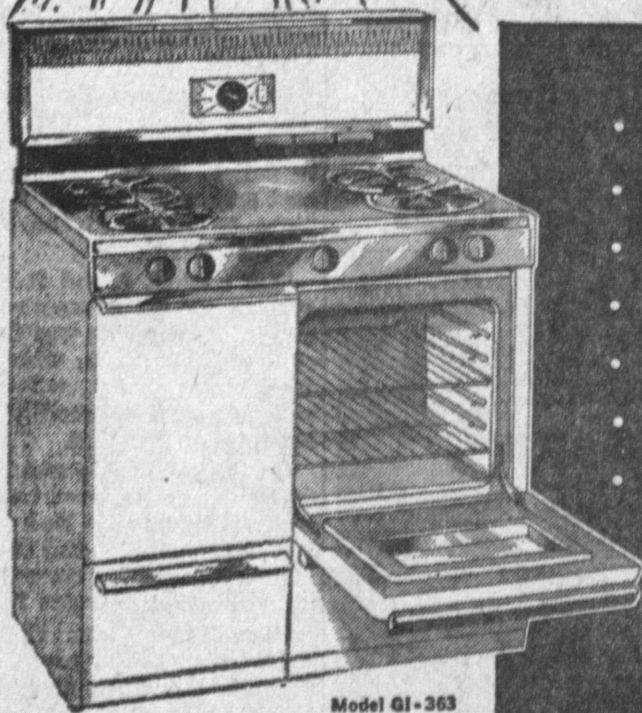
Between "G" St. and Avalon

TE 4-6405



NEW 1960

RCA Whirlpool
Chrome-Top GAS RANGE



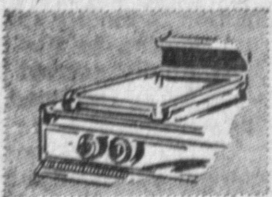
Model GI-363

- Polished Chrome Top
- Heat-proof Oven Window
- 4-hour Timer Clock
- Removable Oven Door
- 'Burner with a Brain'
- Balanced-Heat Oven
- Radiant-Heat Broiler

A tremendous buy in a beautiful, practical 36" range.

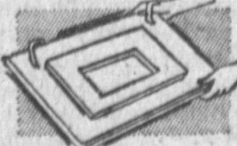
FREE!

LOOK AT THIS PLUS FEATURE!



Set-On Griddle provides thermostatically-controlled grilling.

REMOVABLE OVEN DOOR
Lifts off to make oven cleaning easier—faster. Even back corners are accessible.



VALUE \$249.95

\$199⁹⁵

with trade

LOOK AT
THIS PRICE

palley's

TV and Appliance Dept.

Owned and Operated by Mason's Discounts Unlimited

Open Every Day 9:30 to 9:30

Sunday
9:30 to 6 P.M.

Hawthorne at Sepulveda
Torrance — FR 5-4950

Warehouse Purchase Sale!

13 Cu. Ft.*

2-DOOR HOTPOINT

Refrigerator Freezer

- 101 Lb. Capacity, Real Freezer
- Handy Butter Bin
- Full Width Crisper
- Auto Defrost in Refrigerator
- 2 Shelves
- Tall Bottle Shelf

PALLEY'S SPECIAL LOW PRICE

\$248⁸⁸

Model 9ET12

*Gross Capacity

Hotpoint

FULLY AUTOMATIC
WASHER

- Deluxe Super
- Free Delivery and Installation
- Free 5 Yr. Factory Warranty on Transmission
- All Porcelain

PALLEY'S SPECIAL LOW PRICE

\$158⁸⁸

TELEVISION

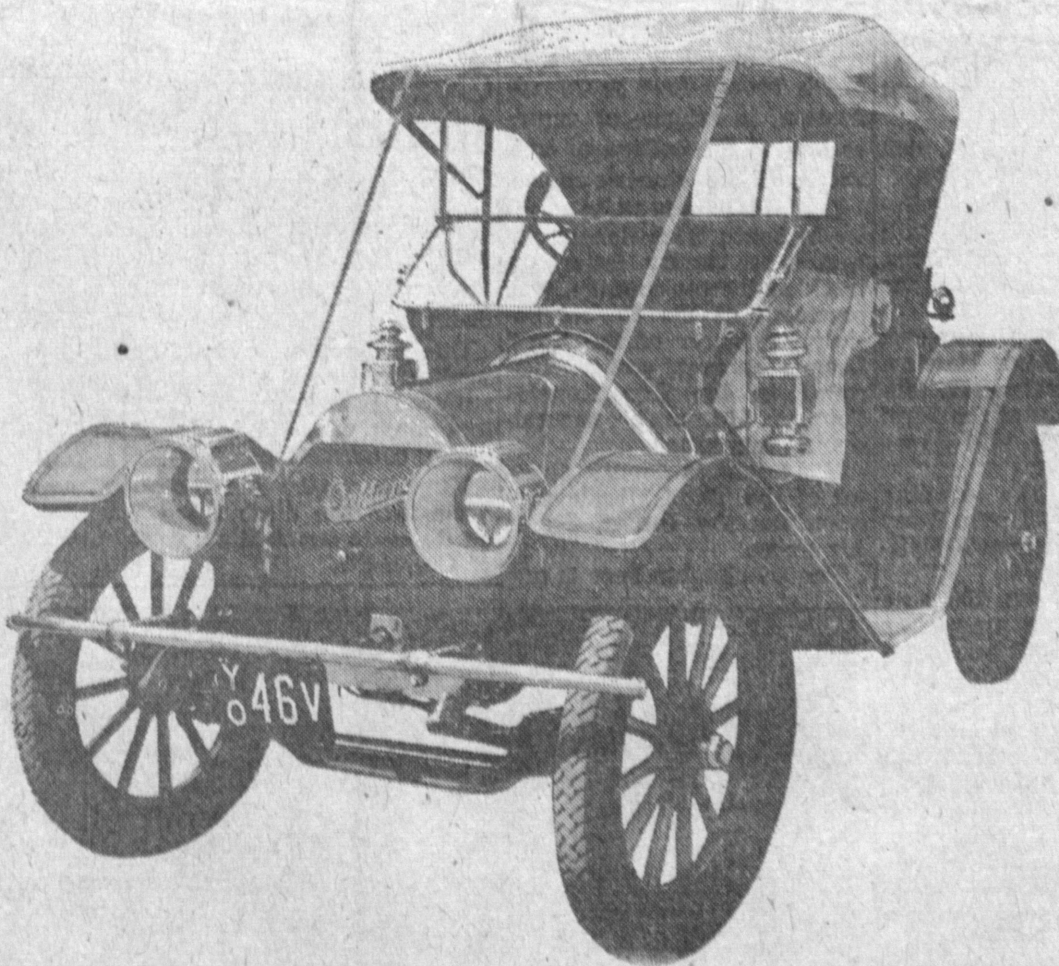
- '60 21" RCA Console w/wireless Remote Control... \$208.31
- '60 21" Philco w/wireless Remote Control... 188.51
- '60 Admiral w/wireless Remote Control... 172.00
- 23" Admiral... 189.00
- 21" GE Console... 148.00
- 21" Zenith Console Floor Model... 234.00

STEREO

AM/FM HI-FI

- Packard Bel 2 in One Stereo Phone AM/FM Combo... 259.00
- Grundig 3 in 1 Stereo-Phone/Combo w/AM-FM-SW Radio... 228.00
- Grundig AM/FM... 49.00
- Zenith 2-PC Stereo Ensemble... 146.00

NO MONEY DOWN
UP TO
36 MONTHS TO PAY



dashing then... **DATED NOW**

(savings can still be as outmoded)

Southwest's higher earnings are the difference between old-fashioned and modern saving

Do you keep up with the times? Then give your savings the same opportunity. And this opportunity lies in the insured protection of a Southwest Savings account. Generous returns added to your passbook every three months mean faster growth... greater profits. No question about it, you're money ahead when you place your funds with Southwest Savings. And earnings start the 1st of the month on accounts opened by the 10th.

each account
insured up to
\$10,000

4 1/2%

current rate per year
Paid Quarterly

Southwest Savings

AND LOAN ASSOCIATION

ASSETS OVER \$64,000,000

INGLEWOOD: 2700 W. Manchester (at 6th Ave.) • PL 3-2164 • TORRANCE: 1603 Cravens (at Marcelina) • FA 8-6111