

REMOTE CONTROLLED — Jet Firebee roars from launching pad in test at Holloman AFB. Ryan will adapt ground-launch-

ing techniques to the Air Force's new Ryan-produced Q-2C Firebee, which also can be air-launched from Air Force B-26.

## Teacher to Go to Institute

Hugh Dooley of 25810 Sky-lark Dr. is among 62 high-school science teachers from 16 states selected to attend National Science Foundation Institute this summer at St. Cloud State College.

More than 450 teachers applied for admission to the program, which will be conducted July 25 through Aug. 27.

Purpose of the institute is to bring high school science teachers up to date on developments in biology, chemistry, and physics, Dr. Hopkins said. The program will feature lectures by nationally known scientists and several field trips.

(Advertisement)

## Artificial Eye Realism Captured in Plastic

TORRANCE — Artificial eyes scarcely distinguishable from wearers' eyes are a tremendous morale building, according to Dr. J. M. Soss, optometrist in the Harbor area for 32 years. Dr. Soss explains that use of new plastics makes it possible to almost exactly duplicate the appearance of an eye, even to the small blood vessels in the white of the eyeball. This realism, plus remarkable motility in the artificial eye, relieves the wearer of any embarrassment that might

be caused by an obvious prostheses. These natural looking, comfortable plastic eyes are moderately priced and convenient terms may be arranged. We are also equipped to clean and rest your present artificial eye. Interested persons should call at Dr. Soss' 1268 Sartori Ave. offices to see the astonishing realism of the new artificial eyes. Phone is FA 8-6602. Offices are open Friday evenings and all day Saturdays. Offices also in Wilmington and Long Beach.

## Air Force to Ground-Launch Ryan Q-2c Firebee Jet Target

Advanced Ryan Q-2C Firebee jet targets will be ground-launched by the Air Force in a new program supplementing present air-launch techniques.

Modification of a number of Q-2C targets off the production line has been ordered by the Air Force to adapt the speedy flying bull's-eyes to ground launch equipment. The first group of modified Q-2Cs will be used in a flight-test program at Holloman Air Force Base, N.M., where a Ryan test crew will be stationed for about 60 days this summer.

Launchers will consist of a four-foot rail, from which Firebees will be catapulted with RATO rockets. The airborne Q-2Cs then will roar away under their own jet power, guided on target mis-

sions by the remote-control station on the ground.

Ground-launch capability will be incorporated in all Firebees entering the production line later this summer, with the installation of required fittings Q-2Cs then will have the capability of launching from a mother plane or from the ground, providing the Air Force with a versatility of operation independent of weather conditions and other factors controlling use of aircraft.

Ryan has had extensive experience in ground-launching Firebees—most recently at the Army's White Sands Missile Range, N.M., where they have been used in operational support of research and development missile activities, in which ground-to-air missiles were fired at the remote-controlled Army Firebee targets.

In its air-to-air missile evaluation and training of jet-interceptor crews, the Air Force has been launching Firebees from converted B-26 bombers. Recently completed were successful tests utilizing the giant prop-jet Lockheed GC-130 Hercules transport, capable of carrying four of the targets simultaneously, twice as many as the GB-26.

After ground-launching, the remote control station can guide the jet-fast Firebee to whatever altitude is desired for the target run, and can command its recovery by parachute to a predestined spot, permitting repeated use.

## Trips Planned Over Week-end by Y Groups

The Torrance YMCA will be doubly busy during the Memorial Day week-end, with two adventurous trips planned.

A group of high-school students will travel to the High Sierra for the holidays, and they hope to climb Mount Whitney, the highest mountain in the United States.

The boys will backpack to the timberline level at Consultation Lake.

On the following day, they will ascend to the 14,495-foot summit. At that point, the boys can see more than 100 miles across Owens Valley and down to Death Valley, the lowest spot in the nation. During the trip, the group will test a new type of dehydrated food in preparation for several backpack hikes along the John Muir Trail this summer.

College-age youths will travel to northern Arizona and Nevada for a tour of five isolated ghost towns.

Steeped in gold-rush lore, the men will explore the remains of Corbat, Mineral Park, White Hills, Nelson, and Eldorado.

They also will visit Hoover Dam. They plan to camp out in three of the ghost towns.

Use Press classified ads to buy, rent or sell. Phone DA 5-1515.

## Y Completes Arrangements for Grand Teton Park Tour

Final arrangements have been completed for the Torrance YMCA's teen-age tour to the Grand Teton National Park. The trip is designed for boys 13 and older and will extend from June 22 to July 3.

Twenty-five youngsters will travel first to Salt Lake City for a dip in the Great Salt Lake and a visit to the Mormon Square.

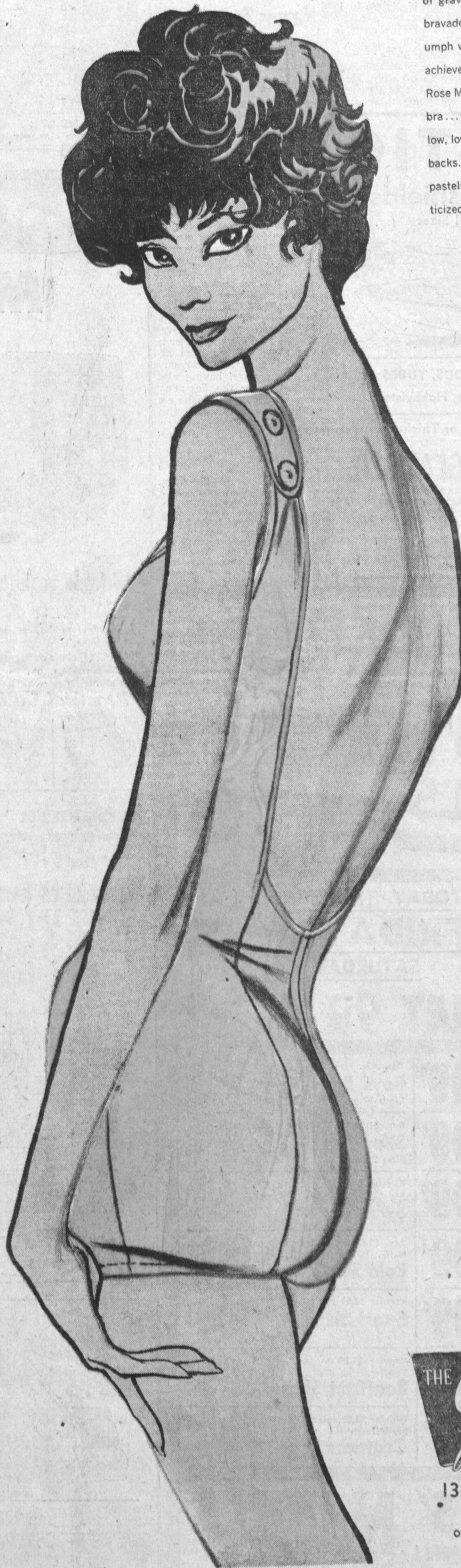
Next they will travel past

Bear Lake to a campsite on the Snake River.

Finally, they arrive in the Jackson Hole country for a base camp near Jackson Lake amid the Rocky Mountains.

On the return trip, the YMCA group will view Old Faithful Geyser in Yellowstone, Idaho Falls, Craters of the Moon, Great Ruth Copper Mine, and a portion of the High Sierra.

## Rose Marie Reid



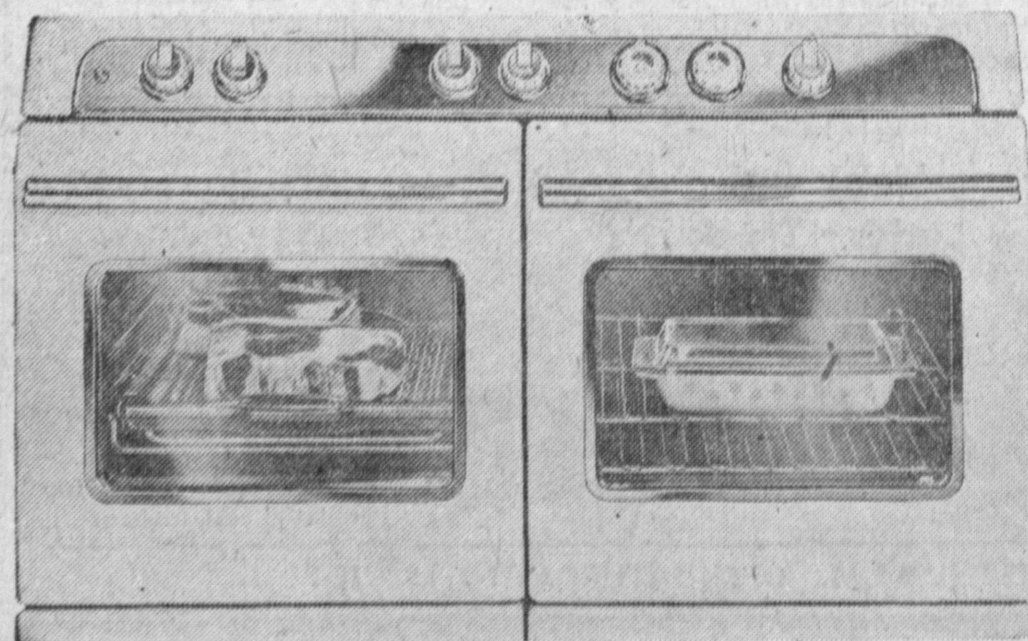
"Low Tide"... a swimsuit that seems to defy all laws of gravity in its backless bravado! It's a design triumph which could only be achieved with the exciting Rose Marie Reid Circolair® bra... specially created for low, lower, lowest swimsuit backs. A sunny seascape of pastels in sharkskin, elasticized. 10-16, 19.95.

EXCLUSIVE  
IN DOWNTOWN  
TORRANCE  
AT  
THE GAY  
SHOP

BankAmericard  
and  
International  
Credit  
Cards  
Accepted  
Here



1319 SARTORI AVE.  
DOWNTOWN TORRANCE  
FA 8-4563  
Open Friday Night Until 9 P.M.



Illustrated above is the brand new O'Keefe & Merritt gas range, built to Gold Star Award standards.

SOUTHERN CALIFORNIA GAS COMPANY