



RECORD WINNER—Von Moffett, president of DeVon Plymouth-Valian-Triumph dealership here, won Southern California Motor Car Dealers' Association golf tourney for

third time. He displays perpetual trophy he will keep another year. Match was at El Dorado Country Club. Moffett last week became group's first three-time winner.

## Scouts Advance in Troop 996 Court of Honor

Scout Troop 996 recently held their quarterly Court of Honor. Among many boys advancing in rank was Tim Stockton, senior patrol leader. He received two more merit badges and his star. Tim is the first scout in the troop to make star.

Other boys who received their advancement and pins were: Tenderfoots: Gary Swanson, Joe Lucas, J. D. Papillion, Terry Walton, Gerald Enson, Larry Booker, Billy Grants, John Schnur, Terry Cammella, David Huston.

Second-Class boys were John Sheares, Kenneth Johnson, Tim Ogara, Billy Grant, Gary Owens, Dean Fogle, Charlie Paddock.

First-Class boys were Ronnie Wilhite, Ronnie Sells, Ray Lang Jr., Don Morgan, John Linaker.

Half of the troop received pins and advancement. The Court of Honor was held at Anza School, where the troop holds its regular meetings.

## \$560,000 City School Bonds Bought by Bank

The Security-First National Bank has bought \$560,000 worth of Torrance Unified School District bonds at a sale of the securities before the Los Angeles County Board of Supervisors.

The bank offered an interest rate of 3.75% and a \$4951 premium. Payment of the premium will reduce the interest to 3.66%.

The money will be used to build 21 classrooms and other facilities at South High School. There are 2000 students attending school, and the additional rooms will provide facilities for 800 more.

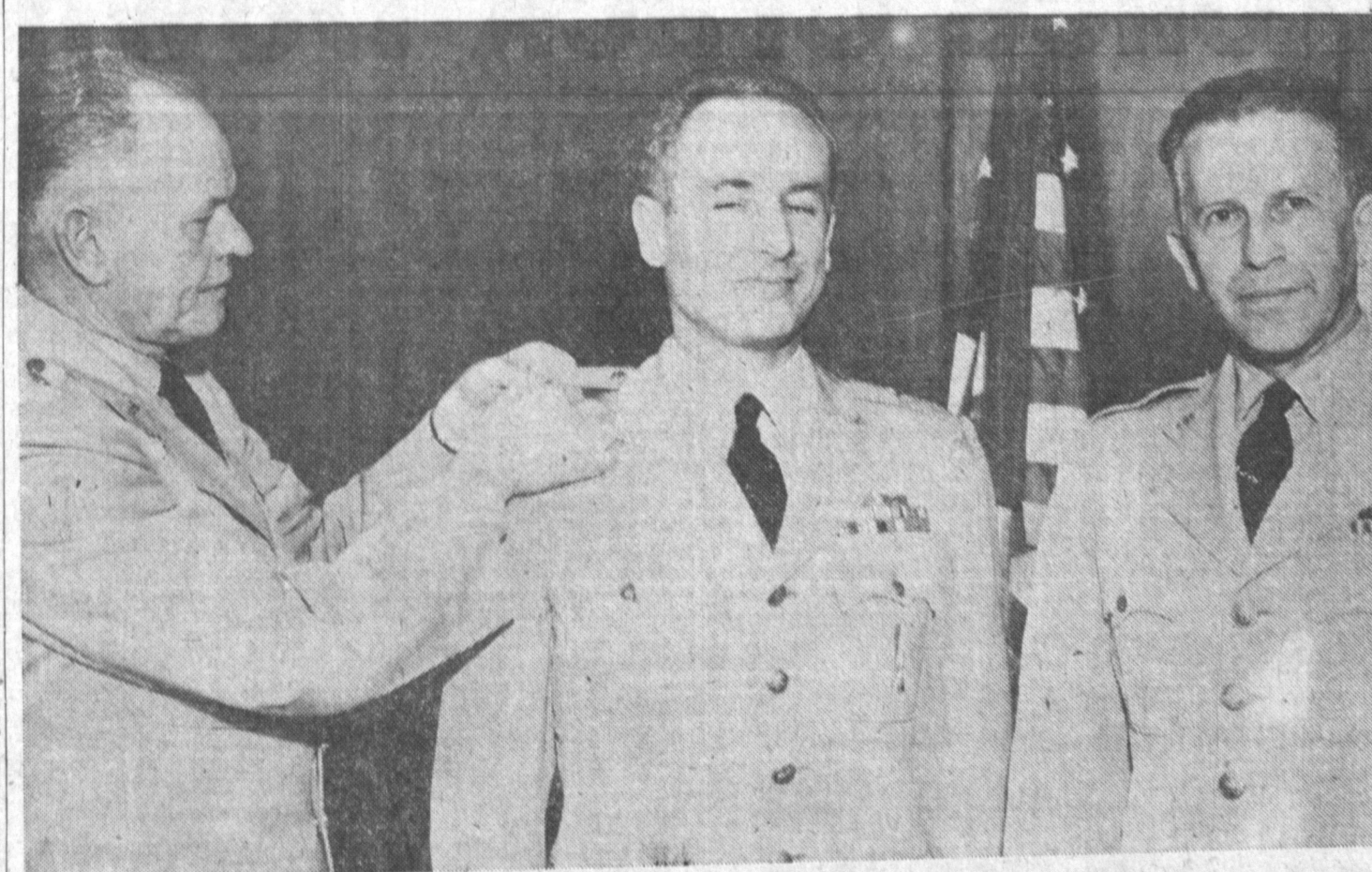
Other facilities include an addition to the music building, storage, restrooms, and lockers.

## Officers Named by Scout Troop

Girl Scout Troop 2000 elected new officers last Monday.

They are Gwen Mills, president; Judy Jackson, vice president; Dianne Lippard, secretary; Nancy Nutman, treasurer; Karen Trystad, scribe; and Marty Lehr Jr., Sandy Chemilskwi, Sandy Olsen and Miss Mills, patrol leaders.

The troop is under leadership of Marvel Deliman and Marty Lehr. Committee members are Betty Townsend, Mildred Johnson, Ethel Tindley and Helen Greninger.



## Torrance Missile Officer Becomes Brigadier General

Promotions to brigadier general this morning rewarded the outstanding careers of two Air Force Ballistic Missile Division officers.

Stars were pinned on Richard Curtin, deputy commander, space programs, and William Leonhard, deputy commander, facilities, by Maj. Gen. O. J. Ritland, AFBMD commander.

Also assisting in the ceremony were Mrs. Leonhard and Brig. Gen. Charles H. Terhune Jr., division vice commander.

Gen. Leonhard's home is 5005 Paseo de las Tortugas, Torrance.

Twice awarded the Legion of Merit for outstanding achievements, Gen. Leonhard is a veteran of nearly 24 years service. He received a regular army commission in the Corps of Engineers by direct examination after earning his BS degree in electrical engineering from Pennsylvania State University in 1936.

He transferred to the Air Force when it was formed in September 1947.

His first three years of military experience were with the 11th Engineer Regiment in Panama. On his return to the U.S., he entered Massachusetts Institute of Technology and obtained an MS in civil and electrical engineering in 1940.

When World War II started, he organized and trained an engineer regiment for construction work on the Alcan Highway and served 18 months as regimental commander and chief of the highway's southern sector.

Moving to Europe with the 20th Armored Division, Leonhard advanced to Chief of Staff and later held the same post with the 2nd Armored Division. He participated in the Central European and Rhineland campaigns and was awarded a Bronze Star Medal for the latter.

After a year in the United States, he returned to Europe as director of installations at Headquarters USAF, Wiesbaden.

den, Germany. He served four years there and earned his first Legion of Merit in 1949 for his contributions to the Berlin Airlift.

During this crisis he planned and supervised construction of five new runways in Berlin and numerous base developments in the U.S. and United Kingdom zones of Germany. Also during this tour he started construction of U.S. bases in England and North Africa, and assisted the NATO buildup in France. Completion of the Air War College course followed his European tour.

Assignment to Air Force headquarters in the Pentagon in 1952 led to Leonhard's second Legion of Merit three years later. This was presented for his efforts in devising and implementing a procedure for advance planning of construction projects before enactment of enabling legislation to save 18 months between work authorization and construction completion. He not only planned the system but sponsored the legislation needed to support it.

Leonhard has served in his present job since July 1956 and has been responsible for developing facilities for use as ballistic missile sites.

General Curtin was assigned to the Air Force Ballistic Missile Division as Assistant Deputy Commander of Technical Operations in February 1958. The following October, he assumed his present duties.

## Group Plans New Torrance Library

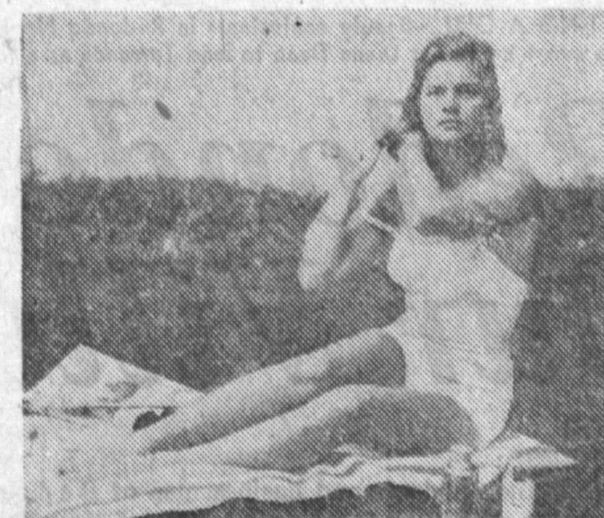
The Torrance Library Commission will meet Tuesday to discuss the possibility of a library for West Torrance.

The meeting, headed by William Hanson, chairman, will be held at 8 p.m. in Room 209 at City Hall, 8031 Torrance Blvd.

Interested persons are being invited to attend.

PROMOTED—William E. Leonhard of Torrance (right), deputy commander for facilities, is promoted to brigadier general in Los Angeles along with Richard D. Curtin, deputy commander for space. Maj. Gen. O. J. Ritland pins on stars.

## CONTACTS HELP YOUR MAKEUP AND HAIR-DO!



## QUESTIONS AND ANSWERS ON CONTACT LENSES:

- Q. How do contacts help a woman's makeup and hair-do?
- A. After she spends hours on her hair and dress and makeup, the effect is not spoiled by disfiguring spectacles. Also, it gives her a much wider choice in hats and earrings.
- Q. Are contact lenses comfortable?
- A. There are no nerves on the surface of the eye, where the contact lens floats. Eyelids can feel contacts at first, but wearers soon get no sensation from contacts, and may wear them 24 hours a day.
- Q. What are my chances of being able to wear contacts?
- A. Your chances are 85%, as 8 1/2 people out of 10 who try contact lenses can wear them. What it takes mainly is some patience and the ability to accept a new idea.
- Q. How much do contact lenses cost per year?
- A. The cost per year may run lower than spectacles, as one contact lens prescription should last a lifetime, compared to the cost of 5 or 10 sets of glasses and frames during a lifetime.

## GET THE FACTS ABOUT CONTACTS—F-R-E-E!

The publishers of Contact Lens Newsletter recommend the following contact lens specialists in this area—be sure to mail coupon today for free literature that can change your life!

Your name \_\_\_\_\_  
Your address \_\_\_\_\_  
City \_\_\_\_\_ Zone \_\_\_\_\_ State \_\_\_\_\_

TEAR OUT COUPON NOW AND MAIL TO:

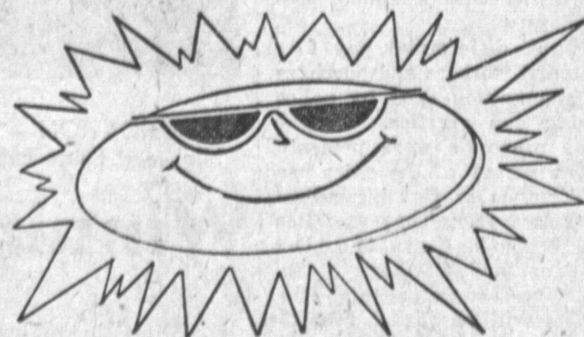
**DR. J. M. SOSS, Optometrist**  
1268 SARTORI—DOWNTOWN TORRANCE  
Offices in Wilmington at 810 Avalon Blvd.  
32 Years in Harbor Area

Use Press Classified Ads ★ DA 5-1515

## Just Lucky

To have this western sun

"Smile"ing down on everyone



FOR THE TOUCH OF LUXURY

THAT FEELS SO FINE

PRICED AS A NECESSITY

AND

IMAGINATIVELY IN LINE



The elegance and ease of living...  
(thought only to exist in a king's rule)  
comes easily... and the pleasure stays

**\$2345<sup>00</sup>**

From South Bay Area

- for less money
- deferred payment plan
- lien-free protection with completion bonds
- maximum efficiency and service with our own controlled crews of experienced craftsmen
- no down payment terms on 3 or 5 years

- special aggregate coping and decorative tiles available
- over 90 custom designs to choose from at standard prices
- all copper piping
- inspected and approved steel reinforced concrete construction
- landscape advice
- service after sale to back up a guarantee from established responsible company

Nobody, But Nobody Can Build a Better Swimming Pool!



Display Pool Can Be Seen at  
**5243 South Sepulveda**  
Culver City  
Phone:  
**FR 3-3205 - EX 1-7151**  
**BLUE HAVEN POOLS**

## Coffee Declares GOP Is Party of Americanism

Tom Coffee, 17th District GOP Congressional candidate, told South Bay Young Republicans this week that our young people "have let politics degenerate into a popularity contest conducted by pollsters because they fail to see the difference between our two major parties."

"Young people should be Republicans," Coffee said, "because the Republican party is the party of Americanism. By Americanism, I mean maximum freedom for the individual—freedom from killing federal taxation, freedom from stifling federal regulation, and freedom from bureaucratic planning of every phase of one's personal life."

"Republicanism does not believe a person is unable to determine what is best for himself. It does believe that the government should be the servant of the people rather than their master or their keeper."

## YOUR HOME IN YOUR CITY



NOT ONLY A WONDERFUL PLACE TO LIVE... BUT THE BEST INVESTMENT YOU CAN MAKE.

For sound, professional guidance, buy your home through a REALTOR.

**E. W. DAWSON**  
REALTORS  
1319 Crenshaw  
FA 8-1776

## 100% FINANCING AVAILABLE

Whether Your 40 or 50x100-Ft. Front or Rear Lot  
Paid for or Not! 1 to 24 Units

## CHOOSE THE INCOME TO FIT YOUR NEEDS

The Following Based on \$85 per Month Rental per Unit  
Prices Based on One-Bedroom Apts.

4-UNIT PRICE	\$14,850.00	8-UNIT PRICE	\$29,700.00
INCOME PER MO.	340.00	INCOME PER MO.	680.00
PAYMENTS	126.00	PAYMENTS	252.00
Your Profit per mo.,	214.00	Your Profit per mo.,	428.00
6-UNIT PRICE	23,275.00	12-UNIT PRICE	\$34,550.00
INCOME PER MO.	510.00	INCOME PER MO.	1,020.00
PAYMENTS	189.00	PAYMENTS	378.00
Your Profit per mo.,	321.00	Your Profit per mo.,	642.00

## T & C CONSTRUCTION CO.

We Give Blue Chip Stamp.

Builders of Homes, Apartments and Commercial

South Bay Main Office 2131 Pacific Coast Hwy.

Open Sundays 10 A.M. to 10 P.M.—Daily 9 A.M. to 9 P.M.—DAvenport 6-9511—Lomita