

International  
&  
Bankameri-  
cards  
Honored

**palley's**

OPEN  
9:30 A.M.  
9:30 P.M.  
DAILY  
SUNDAYS  
9:30 - 6:30

# AUTO PARTS SPECIALS!

HAWTHORNE AT SEPULVEDA

SHOP NOW!

## PRE-SEASON SALE! CANNON Terry Cloth CHAISE LOUNGE COVERS



The Terry Cloth Slip-Cover for  
your Chaise Lounge or Pool Pad.

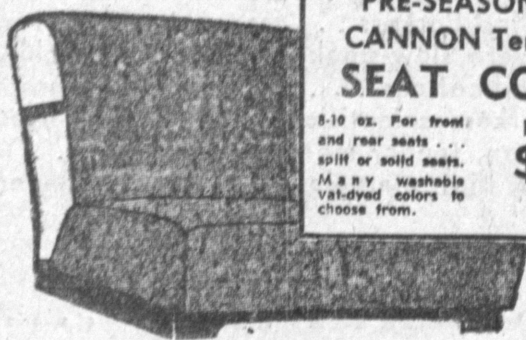
Spruce up your old sun-bolling  
furniture. 81"x36". Whisks on  
and off like a bedsheet, is re-  
versible, can be laundered like  
a towel. Made of thick, thirsty,  
vat-dyed terry cloth. Ball-proof  
elastic around edges for secure  
fit. Assorted colors.

Regular \$3.98

OUR PRICE **\$1.99**

Fits any size, length, thickness

## PRE-SEASON SALE! CANNON Terry Cloth SEAT COVERS



12 oz. Per front  
and rear seats...  
split or solid seats.  
14 x 22 y. washable  
vat-dyed colors to  
choose from.

Reg. \$5.98  
**\$2.99**

## 1-PC. STYLE MASTERCRAFT CAR FLOOR MATS

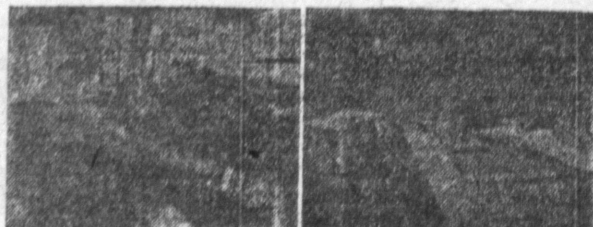


From door to door and up to the  
floor boards. 1959, new rubber...  
Sinter heavy duty 18" x 24" in.  
driver's foot pad. Green,  
Gray, Red, Brown, Blue,  
White, Black. List price  
12.95. Our Price  
7 1/2. Cars 20" x 24" in.

REAR FLOOR MAT  
TO MATCH **\$3.88**

## 'THE IDLER' CAR COOLER

NEW FOR '60

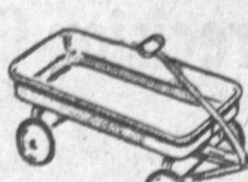


- Make Summer Driving a Comfort with an Alaskan
- Fits under the dash—removable in a minute
- Purifies the air, removing dust, pollen, smoke, smog
- Immediate cooling • 12 directional fins

Runs in the home with extra 150-watt Motor Attachment

List Price \$58.80 OUR PRICE **\$36.88**

## RADIO WAGON



24" x 12"  
Low slung and speedy as a hot rod!  
Coach & 1/2" molded rubber tires. Steel  
steering bearings. Sturdy construction.  
Larger version in stock.  
Reg. \$4.95  
OUR PRICE **\$3.44**

Use Our Lay-A-Way Plan

## BOYS' & GIRLS' AMERICAN MADE BICYCLES



20-INCH MODELS  
WITH TRAINING WHEELS

A sensational value for your young-  
sters. Built by famous American man-  
ufacturers. Full ball bearings, steel  
with training wheels. 20x24 in.

Reg. Price \$39.95

OUR PRICE **\$29.88**

Use Our Lay-A-Way Plan



Locking  
GAS  
CAPS  
**\$1.88**

Positive locking action. Triple defense  
flashes. Post-proof. Buy in quantity.  
Weather-proof, theft-proof. Fits  
with small fender wells. 2 keys incl.  
List Price \$6.30

Seal-Tite  
PRESSURE  
RADIATOR  
CAPS  
List Price \$1.25 **88c**

FR 5-4084

Nationally Adver-  
tised  
**10" TRICYCLE**

- Full bearing front wheel
- Same wide 1 1/2" pneumatic tires
- Tubular steel construction.



Reg. \$26.95

OUR PRICE **\$17**

Use Our Lay-A-Way Plan

## AUTOMATIC CAR RADIO



6-Tube  
8-Tube  
Power

List Price \$49.95

**\$35.95**

## DUO-SOMIC STATION WAGON REAR SEAT SPEAKER

- Wafer thin, inverted yoke  
speaker.
- Tone engineered for  
quality.
- Custom adapters for all  
cars.
- No soldering, drilling  
necessary.

List Price \$15.95

OUR PRICE **\$8.95**

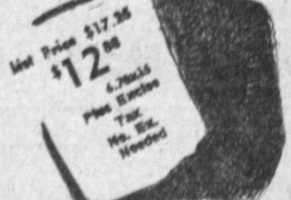


Nat'l.  
Known Brand  
**MOTOR  
OIL**

Non-Detergent Oil  
Reg. \$10.80 Per Case  
OUR PRICE **\$5.88**  
PER CASE

## New Black Tube Type Tire

1-yr. Road Hazard Guar.



Reg. Price \$12.36  
OUR PRICE **\$12.36**

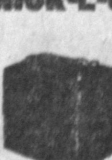
## VISTA J-WAX

by Simoniz by Johnson



Cleans and shines in one  
easy operation. Assures  
all-weather protection up  
to 6 mo.  
Reg. \$2.00 **88c**

## NICK-I-CHARGE BATTERIES



12-Mo. Guarantee  
Long Life, 6 Volts

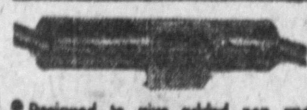
Regularly \$15.95

**\$8.95**

NO BUCH. NECESSARY

## LIFETIME GUARANTEE

GLASS PACK MUFFLER



5.55

Designed to give added pep and mileage.  
• Double spiral leaves case • Heavy gauge and  
connectors and caps • Fiberglass packing  
to absorb exhaust noise.



**TERRY CLOTH  
SEAT COVERS**

No Guest  
any cloth seat covers for up  
to solid front seats. 14" and 20"  
available. White, red, green,  
blue and red.  
Reg. \$4.95  
OUR PRICE **\$2.99**

WHY GUEST? **\$4.95**



**SEAT  
COVERS**

Swivel Plastic Seat Covers that give  
extra long wear and protection. For  
most cars.  
REG. \$19.95 **13.88**

Deluxe Imperial Covers. Finest qual-  
ity. For old and new  
models. REG. \$24.95 **17.95**

29



**INSIST ON...**

**Carburetor**

• No assembly necessary  
• Motor starting easy  
• Pre-lubed tires  
• Eliminator repairs  
• Saves hours

CARBURETOR  
MODEL CO-110

29

## PREMIUM NEW TIRES

WHITEWALL  
Nylon Tubeless



8.00x14-8.50x14-9.00x14  
7.60x15 - 8.00x15

**\$24.95**

plus  
tax, tire  
fees, and  
wheels

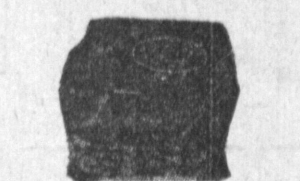
7.50x14 6.70x15

**\$22.44**

plus  
tax, tire  
fees, and  
wheels

36 mo. Road Hazard Guar.  
Better than original equip.  
first! Get ready for vaca-  
tion driving now!

Nationally Adver-  
tised  
**BRAND NEW  
VOLTAGE REGULATOR**



For 4 and 10-watt systems. No Reg.  
Delco-Remy, and Auto-Lite systems.  
List Price \$5.40  
OUR PRICE **\$4.44**

Nationally Adver-  
tised  
**BRAND NEW  
STROMBERG  
POWER  
SPARK  
PLUGS**



Reg. \$5.00 each

OUR PRICE **49c**

Nationally Adver-  
tised  
**Famous Brand  
BRAKE FLUID**



12-ounce Can

70% heavier duty brake fluid houses  
safe, new stops.  
Reg. \$1.00

OUR PRICE **33c**

Advertised in LIFE  
**"Ventilair" Cool  
CAR SEATS**



Full range of ad-  
justers in back and  
slide. Flat-top coil  
inner spring for  
comfort, won't flat-  
ten when  
in use.

List Price \$3.95

OUR PRICE **\$1.98**

Boy's and Girl's  
**26" LIGHTWEIGHT  
IMPORTED BIKES**



Reg. \$49.95

OUR PRICE **\$27.88**

MASTERCRAFT  
**GAS RACER**



Real throttle and hand brake. Control-  
able clutch. Safety roll over. Brilliant  
painted finish. Real starter. 1/2 hp.  
power motor. Heavy duty steel. 10-  
inch. Heavy duty wheels and puncture-  
proof tires.

Reg. \$89.95

OUR PRICE **88.44**

## Shell to triple Production of Synthetic Rubber Here

Shell Chemical will triple its  
projected plant capacity for the  
production of polyisoprene, the  
man-made equivalent of natural  
rubber, it was announced here by  
J. P. Cunningham, general man-  
ager of Shell Chemical's Synthetic  
Rubber division.

Shell Isoprene Rubber, the  
company's name for the new syn-  
thetic, has been manufactured  
commercially on a scale of up  
to five tons a day here for slight-  
ly over a year, enabling consum-  
ers throughout the country to  
evaluate it in a wide variety of  
products, ranging from elastic  
bands to huge tires for earth-  
moving machinery.

The Torrance plant is being  
expanded to a capacity of 40,000-  
000 pounds of polyisoprene a  
year, with completion of con-  
struction expected this fall.

The second installation, now  
in an advanced stage of engi-  
neering design, will be on stream  
one year later.

This expansion will entail con-  
struction at a midwestern loca-  
tion of an integrated monomer-  
polymer plant of 80,000,000  
pounds annual capacity, the hy-  
drocarbon feedstocks for which  
will come from Shell's Wood River  
Refinery located near St.  
Louis, Missouri.

## Moose Lodge Plans for Baby Sweepstakes Here on July 17

The first entries in the Tor-  
rance Moose lodge Baby Sweep-  
stakes, presented in observance  
of the founding of the child city  
of Mooseheart, are being re-  
ceived by Charles R. Britt Jr.,  
chairman of the contest com-  
mittee.

A complete layette and other  
gifts will be presented to the  
mother of the first child born  
July 17, the 37th anniversary of  
the establishment of Mooseheart,  
Illinois, a town inhabited by al-  
most 1000 children.

The youngsters, of cradle to  
high-school age, are the orphan  
children of departed Moose mem-  
bers.

At Mooseheart, a complete city  
occupying nearly 1200 acres in  
the Fox River valley west of Chi-  
cago, the children are both at  
home and at school.

To be eligible as a contestant  
in the Baby Sweepstakes, a pros-  
pective mother must meet these  
requirements: (1) A postal card  
with the name, address, hospital  
of expected delivery, and phone  
number of the entrant must be  
mailed to the Torrance Moose  
lodge, 1744 W. Carson St., before  
July 10. (2) The child must be  
born in Torrance Memorial, Little  
Company of Mary, or Riviera  
hospital. If the contestant's baby  
is born at home or en route to  
the hospital, eligibility will be

in effect.  
Runners-up to the winner also  
will be honored.

Charles Rogers

mens formal wear

## tuxedo rentals

for

proms... weddings... and all

formal occasions

For your convenience...

Open daily, 9:00 a. m. to 7:30 p. m.

Monday and Friday nights 'til 9 p. m.

## Charles Rogers

mens formal wear

2115 Torrance Blvd., Torrance

FA 8-6014



100% of our  
customers chose  
all-electric kitchens.

MR. WARREN STURTEVANT, MEMBER OF THE  
STURTEVANT CORP., DEVELOPERS OF WESTCLIFF,  
NEWPORT BEACH, CALIFORNIA

"We gave buyers a choice of kitchens in our first two Westcliff  
subdivisions. There were 139 homes involved. Every single  
one went all-electric. The future is all-electric and our own cus-  
tomers have demonstrated unanimous preference for all-electric  
kitchens."

Every Medallion Home Guarantees You:

1. An all-electric kitchen with  
major appliances such as range  
and oven.
2. Housepower wiring to  
handle your modern electrical  
needs.
3. Light for living—that's both  
functional and decorative  
throughout your home.

SOUTHERN CALIFORNIA COMPANY