

## Used Lumber

LARGEST STOCK IN THE WEST  
**SAVE 50%  
AND MORE**

ON GOOD SEASONED  
CLEANED USED LUMBER.  
WILL PASS BUILDING CODE.

2x4s . . . 2x6s . . . 2x8s . . . 2x12s, etc.

New Toilet Seats	New White CC Toilet
White \$5.00 Value— <b>2<sup>99</sup></b>	Reg. \$25 Reverse Trap Siphon Jet <b>19<sup>95</sup></b>
NEW 3-PIECE BATH SET	NEW MISSION WALL HEATER
Toilet, Tub, Basin (White) Reg. \$100 White They Last— <b>69<sup>95</sup></b>	25,000 B.T.U. Reg. \$55 Now— <b>42<sup>95</sup></b>

10 ACRES LOADED WITH NEW AND USED BARGAINS  
USE YOUR CREDIT — NOTHING DOWN  
BANKAMERICARD OR TIMEPLAN LOAN

### CLEVELAND WRECKING CO.

1932 S. AVALON BLVD. JUST SOUTH OF CARSON  
Terminal 5-3152 — Spruce 5-1982  
Open Daily 8 a.m. to 5 p.m.—Saturday 8 a.m. to 1 p.m.

## El Camino Instructor to Check Klondike for Gold Content

Klondike gold, led a few men to wealth and thousands to frustration and death during the Alaskan rush of the 1890s, is calling Bernard Pipkin this summer.

Employed by the Pyrcal Venture Corp., Pipkin, geology instructor at El Camino College, will spend one summer month in the glacial and forest terrain of the Klondike in evaluation of gold-containing gravel beds.

The location will be reached in two stages, transport plane to Whitehorse and bush plane to the gold area with a pontoon landing on a small lake. There Pipkin, with members of Pyrcal Venture, will live in a tent.

"People won't believe it," Pipkin said, "but discovery of the field came from a tip on an old sourdough's map. The Pyrcal people went into the area last summer and came out with samples that assayed to \$40 a yard. This is amazing when compared to the average of \$2 a yard."

Pipkin's specific job will be to determine the depth of the gravel in the stream beds. Stream beds, Pipkin said, can go to 40 feet or more.

Two reasons have been advanced for the late discovery of the field. Most traveling during the gold rush of the turn of the century was made on rivers. This



BERNARD PIPKIN

area, though abounding in good streams, has no major river.

Only three months of the year are reasonable for exploration.

Pipkin is in his fourth year as an instructor at El Camino. His academic studies in geology were done primarily at USC and his field work as a petroleum engineer.

## Group to Fight Bonelli Rehash of State Senate

Walter S. Johnson, San Francisco business and civic leader, has been named temporary chairman of the "Committee to Keep California United," a group of civic and political leaders who will carry the burden of the fight against the Bonelli senate reapportionment scheme on the November ballot.

Formation of the committee was announced today by Californians Against Inequitable Reapportionment (CAIR), a non-profit organization made up of a vast majority of county Boards of Supervisors throughout the state. The announcement was made when it was learned that the Secretary of State's office expects the so-called Bonelli plan to reapportion the State Senate to be Proposition 15.

"We will not be caught short-handed," Johnson said. "We have received offers of support from every county and especially in Los Angeles County itself. It's clear that Californians don't want to destroy their system of checks and balances in government, and it's our job to preserve that system."

The "Committee to Keep California United" will be assisted by Consolidated Campaigns of California, the political public-relations firm with statewide offices. The home office is in Sacramento under the direction of David Hunter; the Los Angeles office is headed by Jim Bishop; the San Diego office by Frederick C. Whitney. Offices are also maintained at San Francisco and Fresno.

## Torrance Ryan Places Third in Safety Contest

The Ryan Electronics plant in Torrance, with a record of only .53 accidents per 1,000,000 man-hours, placed third among 12 companies in the research and development group in the National Safety Council safety contest.

Ryan Aeronautical Co. in San Diego and the Ryan Electronics Research and Development facility on Kearney Mesa in San Diego received top safety award in competition with all major aircraft parts manufacturers in the United States.

## Torrance Man Wins Prize With 8-Pound Barrie

Tom Taylor, of 4641 Dulane St., was jackpot winner recently on board the sportfisher "City of Redondo," Redondo Beach Landing, when he caught a 8-pound barracuda.

Taylor and other passengers fished offshore Redondo waters for a total of 103 yellowtail, halibut, bonita and barracuda on the half-day outing.

Biggest part of ocean fishing off Redondo is done over Redondo Canyon, a submarine canyon which moves fish in about a half mile from shore in its strong current.

Three sportfisher boats and three fishing barges now operate daily from the Redondo landing. Boats offer either half-day or all-day trips for fishermen who get to the land from 6 to 7:30 a.m. or at 12:30 p.m.

A boat hoist is in operation for those who bring their own craft. Information and boat passenger reservations may be made by calling the pier at OR 8-5363 or FR 2-3566.

## Fund Earns Record

A record amount of \$6,646,354.04 was earned for the state's general fund the first quarter of this year by the investment and deposit program.

## GIFTS FOR THE

## NICEST MOTHER

## IN THE WORLD...

## RADIOS

Portables and Transistors

**15% off**

During This Sale

## STEAM IRON



Universal **8<sup>88</sup>**  
During This Sale  
Only

Oster

## HAIR DRYER

Reg. 24.95

**17<sup>95</sup>**

## from Owl-Rexall

One Giant Location  
HAWTHORNE AT PACIFIC  
COAST HWY.

Plenty of Free Parking

Open 9 a. m. to 9 p. m.  
Daily and Sunday

Ad Good Thursday Thru Sunday, May 5-8

## COUPON

**FREE!**

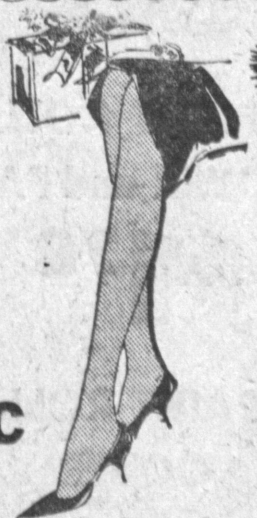
BEAUTIFUL, LONG-STEM  
ROSE

No Obligation to Buy  
With Coupon Only

## Ladies' NYLON HOSE

60-Gauge, 15-Denier  
Reg. 98c

**59<sup>c</sup>**



Before You Buy for

## Mother

See the Largest  
Selection of Gifts in All  
Our Departments  
Marked Down in Price  
Especially for Her

## DECORATED WASTE BASKETS

Reg. 69c **39<sup>c</sup>**

## AJAX CLEANSER

14-oz.  
Can **10<sup>c</sup>**

## SCOTT TOILET TISSUE

Per  
Roll **10<sup>c</sup>**

## PLASTIC CLOTHES BASKET

2.98  
Value **1<sup>49</sup>**

## CHARCOAL BRIQUETS

10 Lbs.  
Reg. 89c **69<sup>c</sup>**

## GARDEN HOSE

50 Ft.  
5-Year Guarantee—Reg. 1.99 **1<sup>49</sup>**

## EPSOM SALTS

5 Lbs.  
**29<sup>c</sup>**  
Reg. 43c

## Skippy Dog Food

15-oz. Can  
**5<sup>c</sup>**

## COMPLETE LINE OF FISHING SUPPLIES

Special Combination  
POLE, REEL AND  
LINE **1<sup>79</sup>**  
DELUXE  
COMBINATION **5.95**

FOR  
Prescriptions  
CALL  
FR 5-2563

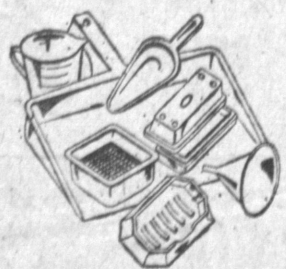
Green Stamps  
With Every  
PURCHASE

# OWL-REXALL

24016 HAWTHORNE BLVD.

CORNER OF  
PACIFIC COAST HIGHWAY

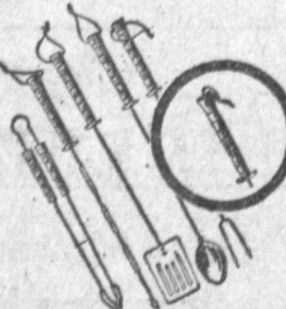
## FREE GIFTS



### 7-Pc. Plastic Kitchen Set

7 kitchen-colored pieces in sturdy, unbreakable polyethylene. Dustpan, soap dish, scourpad, dish, scoop, measure cup, funnel, butter dish.

NEW ACCOUNTS OR ADDITIONS OF  
\$200 TO \$499



### 5-Pc. Deluxe Barbecue Set

Fork, baster, tongs, skewer, turner. Polished wood handles. Leather thongs. Extra-long steel shafts. Perfect for indoor or outdoor use.

NEW ACCOUNTS OR ADDITIONS  
OF \$500 OR MORE

one gift per customer for each new account or addition

# 4 1/2%

current rate per year

PAID EVERY  
3 MONTHS

...at Southwest Savings

each account  
INSURED up to  
\$10,000...



## Southwest Savings

AND LOAN ASSOCIATION

INGLEWOOD: 2700 W. Manchester (at 6th Ave.)—PL 3-2164  
TORRANCE: 1603 Cravens (at Marcelina)—FA 8-6111