

## Designers Stress Ease, Style Behind the Wheel

When milady takes to America's highways this summer the accent will be on style and comfort.

Charles Cooper and Ardee of California, noted designers, point out that light weight fabrics combined with smart accessories will make any jaunt a more pleasurable one.

For that day-long hop—with a stop for lunch and grand entrance at the destination—Charles Cooper suggests a cotton dress and jacket combination. Naturally, for auto wear, it must be wrinkle resistant and packable.

Hats will be, small pillboxes in the same fabric as the costume. They will be simple, with no veils or frills to hinder vision.

Use classified. Call DA 5-1515.

## EXPLAINS CAUSE OF BIFOCAL DISSATISFACTION

A noted eye specialist, writing in the "Journal of Living," claims that the nervousness and headaches suffered by some bifocal wearers are due to the fact that their glasses are not providing comfortable vision at intermediate distances—18 to 50 inches. What is needed, this specialist asserts, is comfortable vision at ALL ranges. Dr. J. M. Soss, optometrist in the Harbor Area for 32 years, concurs with this opinion and states that many of his patients who complained about bifocals are now enjoying great

Use classified. Call DA 5-1515.

## Lionesses Entertain at Bad-Taste Party

The Lioness Club of Torrance entertained North Torrance Lionesses at a bad-taste party April 19 in Redondo Beach.

Guests included Ginger Lawson and Mmes. Earl Chambers, Gene Brown, Richard Hubert, Leo Schlessner, Nelson Cullum, Charles Comstock, Alton Hieb, and Jack Mathews.

Use classified. Call DA 5-1515.

## Nortronics New Sponsor of Mariner Ship Troop

Nortronics Electronic has been named sponsor of Mariner Ship Troop No. 25 troop of the Girl Scouts of America.

All members of the troop reside in the vicinity of the Research Park tract in Palos Verdes where Nortronics is planning to construct new facilities.

Mariner Ship 25 was founded in 1953. It has 25 members. Mrs. L. M. Rothrock of 26563 Basswood Ave., Rolling Hills, is troop leader.

Nortronics participation in the Girl Scout program is part of the over-all activities of the Northrop Recreation Club.

## Torrance Woman's Club Schedules Sale Saturday

The Torrance Woman's Club, District 18, CFWC, will hold its annual rummage sale Saturday, starting at 9 a.m. at the clubhouse, 14222 Engracia Ave.

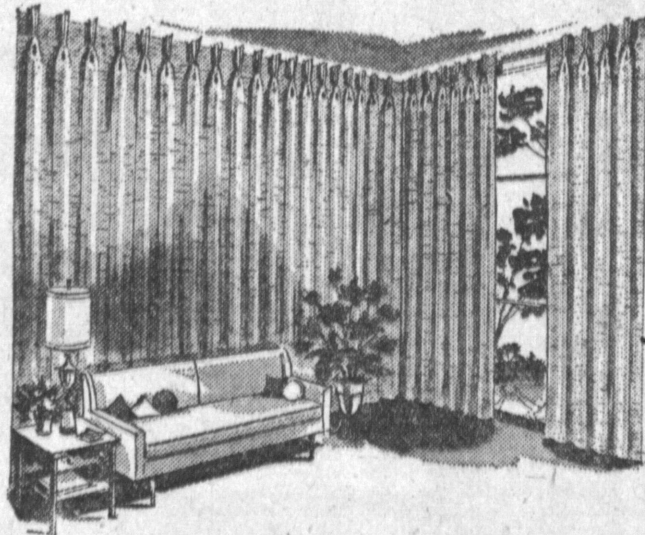
Clothes for men, women, and children will be featured. Mrs. Andrew Acampora is chairman.

Use Press classified ads to buy, rent or sell. Phone DA 5-1515.



**APRIL SPECIAL!**  
Reg. 75c  
**Ladies' TOP LIFTS 49c**  
Composition or Leather  
NYLON TOP LIFTS  
Res. 1.00, NOW 75c

**KENNY'S SHOE REPAIR**  
1278 SARTORI (Across from Newberry's, Downtown Tor.)



**"SENSATIONAL"**  
Entire Living Room  
Completely Draped **39<sup>95</sup>**  
10 FEET OF WINDOWS

• COMPLETELY INSTALLED WITHIN 1 WEEK FROM OUR OWN WORK SHOP!

CALL FOR FREE DECORATOR SERVICE  
TE 3-0217 • TE 3-0538

**Bergen's** CUSTOM INTERIORS  
1725 S. Pacific Ave. San Pedro

**WESTERN SURPLUS**  
formerly  
**HAWTHORNE SURPLUS**  
**GIGANTIC 10<sup>th</sup>**

**ANNIVERSARY**

**FREE! GIFT**  
with purchase of 1.00 or over

**SHIRTS! SHIRTS! SHIRTS!**  
Wash 'n' Wear SPORT SHIRTS **99c**  
Buy them at this low price... the benefit of this huge, special factory purchase of new lightweight high quality shirts. These are famous name brand shirts, slightly irregular and priced way below manufacturer's cost. Choose from a terrific assortment of solid and fancy colors and patterns.  
Values to \$5.00  
**2 for 1<sup>86</sup>**

**STOCK UP NOW!**  
famous  
**"Dan River" or "Cannon" Sheets**  
130 Count  
Twin 72"x108"  
**177**  
Double 81"x108"  
**199**  
Pillow Cases **39c**  
Limit 4

**MOTORIZED BAR-B-QUE**  
40" high  
Family Size  
Completely equipped with:  
• Motor  
• Adjust. Grill  
• Rubber Tired Wheels  
• Hood  
Features:  
• Tubular legs, chrome plated  
• Grill with ratchet mechanism, 6 ft. cord, & chrome plated forks and grill rod with wood handle. Sturdily constructed to give long years of service.  
Generally Priced elsewhere for up to 18.95  
**9<sup>19</sup>**  
Motor Guaranteed 1 Year

**STURDY ALUMINUM Folding Chairs**  
Wide Weave Weather-Resistant SARAN WEBBING  
Luster finish aluminum frame.  
Comfort curved back. Aluminum arms.  
**377**  
SPECTACULAR  
**6<sup>99</sup>**  
FOLDING Adjustable Chaise  
• 5-row Saran web straps  
• Polished aluminum frame  
• Form folding mechanism  
• Contour shaped bed  
• 4-way easy adjustment  
Genuine U.S. Gov't. Surplus at a mere fraction of Gov't. cost  
**WOW! 9<sup>9</sup>**  
LOOK WHAT YOU GET for only

**FREE 5 BATTERIES** with this Purchase  
**Long Beam 5-Cell Flashlight**  
Sturdy 15" Metal Case  
Has on/off and hold switch plus signal button.  
2.50 Value  
**99c**  
**MEN'S NEW SLACKS**  
Polished cottons, Galvalloy twills, ivy, peggers, etc. First quality.  
• Levi's • Lee's • Angelus, etc.  
Values 6.95  
**2<sup>98</sup>**  
New **Engineers Boots**  
Goodyear welt construction. Oil tanned leather. Boys' and Men's.  
**8<sup>88</sup>**  
BRAND NEW **G.I. Fleasheets WORK SHOES**  
**4<sup>99</sup>** pr.  
LITTLE LEAGUE **BASEBALL SHOES**  
Size from 1 Boys' to 9 Men's. Reg. rubber soles and cleats.  
**2<sup>88</sup>** pr.  
**NYLON BRAIDED CORD**  
45-ft., 450-lb. test or 27-ft., 1500-lb. test  
**49c**  
**PUP TENTS**  
Genuine Army Re-Issue  
Complete with 8 pins, 2 poles & nylon tie-down rope.  
**5<sup>95</sup>**  
Space limits showing the hundreds of other items on sale for home, shop, vacation, outings, etc. Come in, you'll find it worth while!

**BOYS' and MEN'S Triple Sole Shoes**  
Brown or black. Zigzag sole. Will wear and wear.  
**2<sup>88</sup>** pr.  
**100% NYLON Car Covers**  
Made of genuine surplus nylon material. Mildew & rot resistant.  
**3<sup>99</sup>**  
5-Gallon Re-Issue **JEEP CANS**  
Water or Gas **1<sup>98</sup>**  
**JEEP CAN FLEX NOZZLES** 98c  
**JEEP CAN HOLDERS** 2.98

**STURDY STEEL Bunk Beds**  
26" wide. Angle iron construction. With resilient link springs.  
Rolled Edge 36" Mattress **4<sup>99</sup>**  
100% WOOL Genuine G.I. **BLANKET**  
Made for the Marine Corps of the finest wool. O.D. COLOR **2<sup>88</sup>**  
New G.I. 30" **MATTRESS COVER**  
Sturdy Gov't. material. O.D. or white **2<sup>98</sup>**

**25-FT. GARDEN HOSE**  
Vinyl Plastic 5-Year Guarantee **88c**  
**50-FT. \$1.69**  
COMPLETE DEPARTMENT Garden Tools & Supplies  
**Fresh Water SPIN SET**  
Consists of:  
Spin reel, 2-pc. 1/4-h. glass spin rod, 100 yds. Monofilament, split shot, weights, hooks, line, scale and stringer.  
**6<sup>88</sup>** Comp.  
**GLASS SPIN ROD**  
6 1/2-ft., 2-Pc. with cork handle. Reg. 5.95 **2<sup>88</sup>**  
**MITCHELL CAP #304** Reg. 17.95 **9<sup>88</sup>**  
**FRESH WATER SPIN REEL** Complete Dept. for all Your Fishing Needs **9<sup>88</sup>**

**30-Cal. AMMO BOXES** 9c  
**CARTRIDGE BELTS** 9c  
**PITH HELMETS** 9c  
**NYLON CORD** 11 ft., 350-lb. test 9c  
**Skat Insect REPELLENT** 9c  
**2 Popular Hiker Packs in One**  
Marine Corps and scout pack combined. Adj. shoulder straps. BOTH FOR **59c**  
G.I. Re-Issue Rubber **HIP BOOTS**  
Extra heavy duty uppers with thick cleated soles. Ideal for fishing, work **4<sup>99</sup>** pr.  
New G.I. **Pickmattox or Folding Shovel** YOUR CHOICE **1<sup>99</sup>**  
**WEB STRAPS**, 2" wide, 30" long with D-ring and adjustable buckle 9c  
**VELVET LINERS** 9c  
**Web Pack SUSPENDERS** 9c  
**RUBBER SOLES** 9c  
**Men's RATION STOVES** plus heat tablet 9c  
**SCOUT Type Aluminum MESS KIT**  
Consists of: Frying Pan, Cup, Deep Dish, Kettle, Lid and Handle **1<sup>99</sup>**  
Rubberized Nylon Ground Cloth keeps in car or home for many uses. Approx. \$7.97 with Grommets. **2<sup>49</sup>**  
Heavy Canvas **PICKMATTOX or SHOVEL COVERS** 39c

**GENUINE G.I. RE-ISSUE FOLDING COTS**  
**2<sup>99</sup>**  
Made of heavy duty, reinforced canvas and sturdy oak legs.  
New G.I. Cots Also Available  
**GENUINE U.S. NAVY HEAVY CANVAS HAMMOCKS**  
Re-Issue, good condition. Complete with ropes and clews. **3<sup>88</sup>**

**POPULAR TOOLS** at a popular price!  
**7-BLADE HOLE SAW**  
The handiest tool ever made for cutting perfect holes. 1" x 2 1/2" hole sizes. FITS ANY 1/4" DRILL **77c**  
**12" ADJUSTABLE WRENCH** 77c  
**10" PIPE WRENCH** 77c  
**26" HAND SAW** 77c  
**10-Lb. WHITE FACE TAPE** 77c  
**WOOD LEVEL** 77c  
**18-Pc. ALLEN WRENCH SET** Complete Tool Dept. for Home or Shop **77c**

**HOURS:**  
8:30 A.M. to 9 P.M.  
**SUNDAYS**  
8:30 to 5:30

**GENUINE G.I. RE-ISSUE FOLDING Canvas Buckets** **59c**

**WESTERN SURPLUS**  
(formerly Hawthorne Surplus)  
**649 HAWTHORNE BLVD.** at 134th St. ALSO  
**WESTERN SURPLUS, 8505 S. Western Ave., 1 block N. of Manchester**

**Credit**  
Use Your BankAmerica or International **Credit Cards**

**Complete Tool Dept. for Home or Shop**