



LEADERS MEET—Red Cross commerce-and-industry leaders Joe Sullivan, John Bartuska, Clifford Samson and John Heninger meet to push plans for intense fund drive in Torrance.

Red Cross Money Drive Now 65% of Goal in Torrance

The Red Cross drive is lagging in Torrance with 65% of its quota of \$9000, according to Dean Sears, area chairman.

Sears said more money must be raised so the Red Cross may continue its services to the community. He said the greatest shortage is in the commerce-and-industry division, which has reached 22% of its quota of \$2500.

Clifford Samson, chairman of commerce-and-industry division, called a meeting last week in an effort to organize a clean-up team to contact industrial lead-

ers. Committee members are John Heninger, John Bartuska, Joe Sullivan, Holman Howe, W. L. Haas, J. R. Munich, Jack Schmidt, and Andy Shoemaker.

Sears said the southern region stands at 92% of its goal of \$44,500. Leading the communities is Palos Verdes Peninsula with 106% of its \$9000 goal, followed by Gardena with 107% of its quota of \$8500, and San Pedro with 105% of goal of \$11,300. Wilmington is 71% of a goal of \$5500 and Lomita has 52% of its goal of \$1200.

LOOSELEAF NOTEBOOK

By ALAN ANTHONY

It is now that time again, when the country turns half-slave, half-free, and entirely chaotic. This is accomplished by moving the clocks back—or ahead; it's never quite clear which. For those who derive some inexplicable satisfaction from throwing time out of kilter twice a year, it probably doesn't matter.

The illusion of gaining an hour a day persists, despite all scientific evidence to the contrary. What happens is that we lose an hour of sleep, which might be profitable if we gave milk or laid eggs.

While a few may take some delight in fancying it is 8 p.m. when it really only is 7, the majority are thrown into a summer of confusion.

No one is quite sure when a plane or train arrives or departs or whether they are dragging or leaping ahead an hour on TV programs.

The hardy worker who goes in at 6 a.m. has traversed the freeway in total darkness and is at his appointed tasks before the first rooster has warmed up. There is no more dismal way to start a day. He finishes his labors and still is confronted with several more hours of sunshine. He dines with the sun in his face and finally retires feeling he has endured two days, not one—which, in actuality, he has.

Those who go to work at the more reasonable hour of 2 and 3 p.m. suffer just as acutely. Where they formerly ate lunch under artificial light, the sun now is high in the sky, keeping them ever mindful that the current day's weariness has a long way to go. There is something quite encouraging about sundown: the assurance that it soon will be over.

There is a certain barbarism to daylight-saving time. It doubtless is seated in the dim past before electric lights, when activity ceased at dark. But even that does not explain the madness that gives us an hour of darkness in the morning in order that we may have an hour of sunshine at night. To end a day with the sun up is unthinkable, unless, of course, the sun is just rising.

Electric lights can be controlled to be kind to the eyes, gentle to the skin, and flattering to milady's complexion. Sun cannot. Beneficial as it is to trees and flowers, all it does to people is to turn their skin the color of an old Mexican saddle and etch crow's feet round the eyes.

This present writer, inclined to keep in touch with reality, will leave his clocks alone. The concept of creating something out of nothing is not confined to time in this best of all possible worlds.

Four Torrance Teachers Schedule Foreign Studies

Four Torrance teachers have been granted sabbatical leaves for the 1960-61 school year.

Three of the teachers—the Misses Mary Barrett and Marjorie Carey, of Perry Elementary School, and John L. Tucker, Columbia School—will study in Europe.

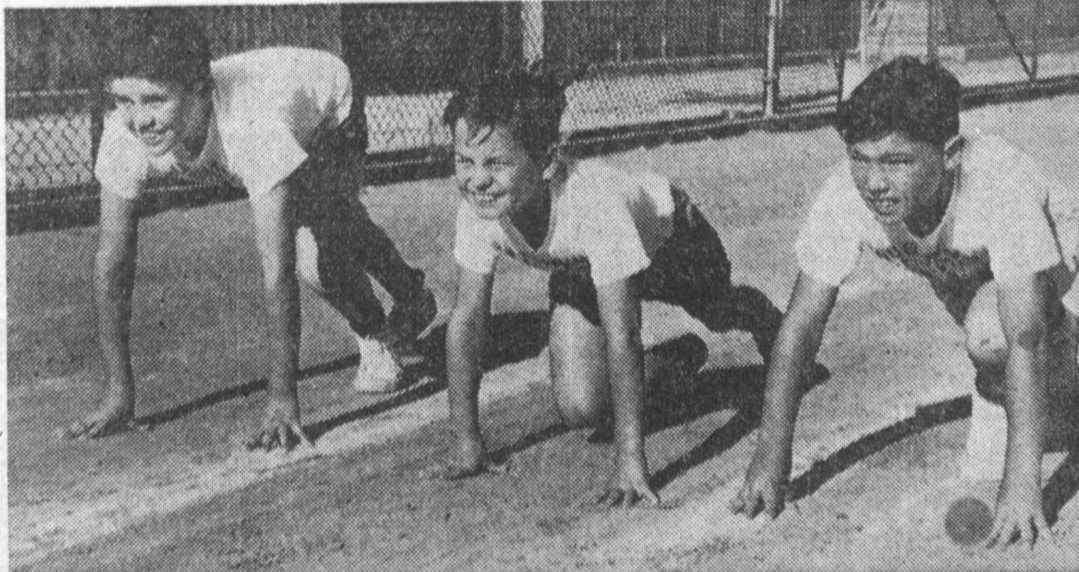
Alice Hammond, Torrance

High, will take a course at the African Studies Center at UCLA. Miss Carey plans to study school health and guidance in Scandinavia and Germany and hopes to attend the University of Munich. She also has applied to study with Jean Piaget, noted psychologist, in Geneva.

Miss Barrett will put emphasis on study of education, philosophy, and religion in Germany, Spain, and France.

Tucker, a teacher of the mentally retarded, will study European methods of aiding these children. He also will attend the World Conference on Mental Deficiency in London and the World Conference on Mental Health in Edinburgh, Scotland.

Mrs. Hammond, a social studies instructor, will devote intensive study to Africa, an area which she feels is becoming increasingly important in world history.



GRA-Y TRACK MEET — Gary Kleinhaus, John Albright and John Egelund are on their mark for race in Gra-Y event at Torrance High. Results will appear Thursday.

First-of-the-Week Penny Pinchers From



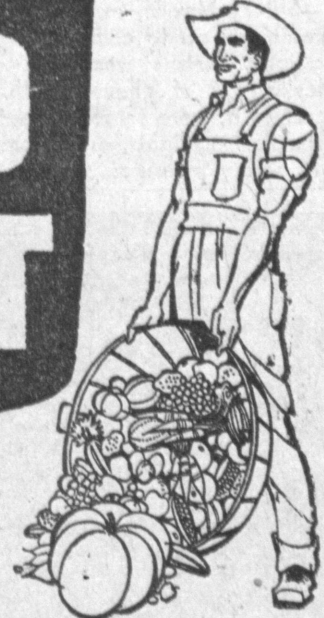
FOOD GIANT!

Take your piggy-bank along when you shop at Food Giant. Then do one of two things: Break it open and pay for your groceries or stuff it with the savings you get when you shop with us!



FOOD GIANT

3 BIG SALE DAYS
Monday, Tuesday, & Wednesday
April 25, 26 & 27 • Limit Rights Reserved



For Fine Texture, Fine Taste!

Swansdown CAKE MIX

WHITE
YELLOW
DEVIL'S FOOD
SUGAR MAPLE
Reg. 19-oz.
Package

29¢

KERMIN • FROZEN TURKEY, BEEF or CHICKEN PIES

5 \$1.00
8-oz. Pies

GOLDEN CREME
All Flavors • Imitation

ICE MILK

1/2 Gal.
Ctn.

33¢

Price Includes "10c Off" Label
INSTANT COFFEE

NESCAFE

Price Includes "10c Off" Label—Large 6-oz. Jar 79¢

DENNISON'S • Large 40-oz. Can

SPAGHETTI AND MEATBALLS

49¢

HUNT CLUB • Dog Food

BURGER BITS

5-lb. Box 59¢

FLAV-R-PAK • FROZEN • PINK OR REGULAR



LEMONADE

12 6-oz. Cans

\$1.00

FARM FRESH PRODUCE

FIRM • SLICING • California

TOMATOES

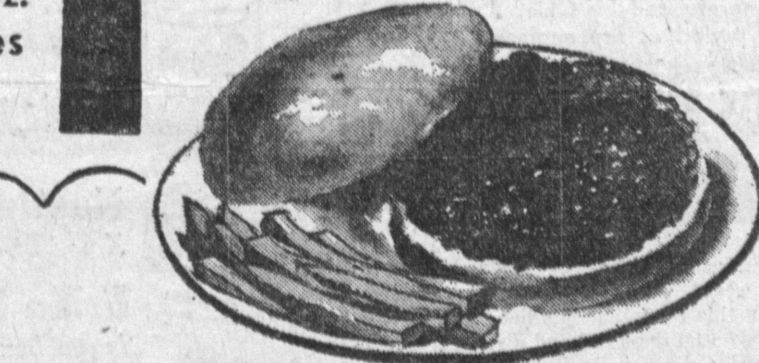
RED
AND
RIPE

19¢ lb.



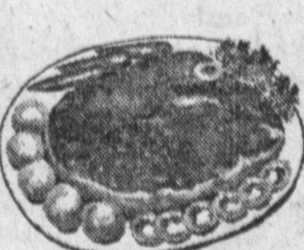
CRISP and LEAFY • Large Head

ROMAINE 5¢ ea.



FRESH • Extra Lean GROUND ROUND

Truly the most versatile of meats, our fresh, tasty ground round is just the thing to have on hand for last minute supper guests! Stock your freezer now, then whip up hamburgers, meat loaf or meat balls for spaghetti right at the last moment!



U.S.D.A. "Choice" or Food Giant's "Banquet Perfect"

Round Steak

BEST CENTER CUTS 79¢ lb.

U.S.D.A. "Choice" or Food Giant's "Banquet Perfect" BONELESS SWISS STEAK 79¢ lb.

SWIFT'S • Sweet Rasher SLICED BACON 1-lb. Pkg. 39¢

U.S.D.A. "Choice" or Food Giant's Banquet Perfect RUMP ROAST Extra Value Trim 79¢ lb.

STREAM FRESH • 2 to the Pkg. 10-oz. Pkg. 39¢

READY-TO-COOK • Peeled & Deveined GULF CAUGHT SHRIMP 79¢ lb.

RUPERT'S • FROZEN WHITING

24-oz. Pkg. 35¢

STA-FLO • LIQUID STARCH

Quart Bottle 23¢

Delicatessen

GRAND TASTE • All Beef

SALAMI CHUBS

12-oz. CHUB 59¢



PALMOLIVE TOILET SOAP 3 Reg. Bars 33¢

PALMOLIVE TOILET SOAP 2 Bath Bars 31¢

CASHMERE BOUQUET (WHITE) TOILET SOAP 3 Reg. Bars 33¢

VEL • Powdered DETERGENT Reg. Box 35¢

FAB DETERGENT Ct. Box 83¢

AJAX • Scouring CLEANSER 2 Econ. Cans 49¢

In	In	In	In	In	In	In	In
Gardena	Hawthorne	Inglewood	Los Angeles	Manhattan Beach	North Torrance	Torrance	San Pedro
14990 S. Crenshaw at Compton Blvd.	423 S. Hawthorne Blvd. at 132nd	11202 S. Crenshaw Blvd. At Imperial	11208 S. Western Ave. at Imperial	2400 Sepulveda Blvd. at Marine	4848 W. 190th St. at Anza	3731 Pacific Coast Hwy. at Hawthorne	28849 S. Western Avenue

NEW CAR DIRECTORY

G.M.C. TRUCKS
OLDSMOBILE - CADILLAC

CECIL L. THOMAS & SONS
Terminal 3-5291 — PACIFIC at FOURTH, SAN PEDRO

STUDEBAKER ORegon 8-4005

Dealer Authorized by Studebaker Corporation to Service the Torrance Area

FRANK H. AFTON CO.
240 N. MARKET, INGLEWOOD

"FREE" COFFEE

WITH THIS AD

AT

DONNY'S

Coffee Shop

1822 TORRANCE BLVD.

UNDER NEW OWNERSHIP

DOWNTOWN TORRANCE