

## Mrs. Mittleman Elected President

Mrs. Stanley Mittleman of Torrance recently was elected president of the Hollypark B'nai B'rith. Taking office with Mrs. Mittleman were Mmes. Arnold Gillmer, Mort Swartz, and Stanley Cooper, vice presidents; Ralph Miller, financial secretary; Robert Brody, treasurer; Stanley Caplin recording secretary; and Charles Stearns and Lee Steindler, corresponding secretaries. Also Mmes. Morton Weinberg, sentinel; Alfred Cohen, guardian; Harvey Chernik, Leonard Fruchter, Paul Klein, Fred Mautner, and Herbert Schwartz, trustees; and Albert Parks, counselor.

## Come to Church



**WORSHIP  
AT THE  
CHURCH OF  
YOUR CHOICE**  
MORE THINGS ARE  
WROUGHT BY PRAYER  
THAN THIS WORLD  
DREAMS OF

**ANZA AVENUE BAPTIST CHURCH**—C. D. Scott, pastor, Phone FR 3-1840. At Anza (Valencia) and Spencer Avenues, Sunday, Sunday school, 9:45; Morning Worship, 10:45; Evening Worship, 7:30. Training Union, 6; Evening Worship, 7. Wednesday, Mid-week Prayer Service, 7.

**CHURCH OF CHRIST**—1217 Cravens Ave. in Torrance. Schedule of services: Sunday, 8:30 a.m., Worship service, 9:45 a.m., Bible study, 10:45 a.m., Worship service, 4 p.m.; Young People's meeting, 7 p.m.; Evening Worship Wednesday, 7:30 p.m.; Ladies' Bible class, 7:30 p.m.; Bible study.

**FIRST BAPTIST CHURCH**—Carson at Manuel. Rev. Morgan Gates, pastor, Robt. Dahn, assistant minister. Church phone, FA 8-5020; 9:15 and 10:45 morning worship; 9:15 Nursery through 4th grade; High through Adult Sunday School; 4:30 p.m. Training Union; 7:30 p.m. Evangelistic service; Wednesday 7:30 p.m. mid-week service. Nursery for every service.

**FIRST BAPTIST CHURCH**—Park and Newton Sts. in Waverly. Rev. L. P. Husted, pastor. Frontier 5-6792. Bible school at 9:30 a.m.; morning worship hour, 9:30 and 11 a.m. Nursery care provided for both sessions. Inspirational Gospel Hour at 7 p.m. Wednesday 7:30 p.m. Bible exposition and prayer.

**FIRST LUTHERAN CHURCH**—Located on Carson St. and Flower Ave. in Torrance. Wm. J. Rolander, pastor. Residence, 2550 El Dorado. Phone FA 8-3249. Church office, 1725 Flower Ave. FA 8-5584. First Church worship 8 a.m.; Sunday School, 9:30 a.m.; second morning worship, 10:45 a.m. Donald Staudt, intern.

**FIRST PRESBYTERIAN CHURCH OF GARDENA**—1957 W. Redondo Beach Blvd. Davis 4-1884. Rev. R. Murray Jones, minister. 1492 W. 133rd St. Gardena Davis 3-1215. Sunday School, 10:45 a.m. (nursery care provided). Youth Fellowship, 1957 Redondo Beach Blvd. 10:15 a.m. (nursery care provided). Youth Fellowship, 1957 Redondo Beach Blvd. Sunday — 7:00 p.m.

**FOUR SQUARE CHURCH**—Corner of Arlington and Sepulveda. Telephone, DA 6-2672. Rev. and Mrs. James P. Lowery, pastors. Sunday, Sunday school, 9:30 a.m.; morning worship, 10:45 a.m.; group services, 6:30 p.m. Y. P. Cadets, Defenders; Evangelistic, 7:30 p.m. Mid-week, Wednesday, Bible study at 7:30 p.m. Public invited.

**GREEK ORTHODOX**—317 S. Broadway, Redondo Beach. Phone FR 5-8921. Divine Liturgy, 11 a.m. to 12 noon every Sunday. Rev. Naoum Nisidori. Sunday school classes at 10:30 a.m. Greek school and Bible classes every Tuesday, Thursday, 7:30 p.m.

**GREYFRIARS MEMORIAL PRESBYTERIAN CHURCH** (Fundamental, Orthodox) For more of Los Angeles. Worship in the Sea Aire recreation hall at Reynolds and Lubine. Sunday school beginning as usual at 9:30 a.m. Bring your children (nursery). Dr. David Calderwood will preach.

**IMMANUEL LUTHERAN CHURCH** (Missouri Synod)—705 Knob Hill Ave., Redondo Beach, near Southwood Park, west of Hawthorne, south of Sepulveda. Sunday School, 9:45 a.m. worship service, 8:30 and 11 a.m. Lenten worship, Wed., 7:30 p.m. "The Living Christ" film series, Sundays, 5 p.m. Pastor A. L. Scheutz, FR 5-9535 or 5-7555.

**LUTHERAN CHURCH OF THE GOOD SHEPHERD**—21100 Victor St. Torrance. Gerald W. Garlid, pastor, phone FR 3-1144 or FR 5-9921. Sunday, 9:30 a.m., Sunday school, 10:45 a.m.; morning worship; child care during the service. Thursday 8 p.m. Mid-week Bible study.

**NATIVITY CATHOLIC CHURCH**—1447 Engracia Ave., Torrance. Rt. Rev. Msgr. Thomas J. McCarthy, pastor, phone FA 8-2774. Schedule of masses. Eight Sunday masses, seven at main church, 1447 Engracia Ave., 6, 7, 8, 10, 11 and 12:15. One mass at Mission Church of St. Joseph's, 2314 W. Del Amo Blvd. at 9:30 a.m. Confessions three and Sundays at 2 p.m. Infant care from 9 to 11 a.m. at Nativity Annex, 1415 Engracia Ave., Torrance.

**ST. MARK'S PRESBYTERIAN CHURCH**—25th St. at Woodward Ave., Lomita. (Near Lomita Blvd. & Narbonne Ave.) Church phone, DA 6-6986. Rev. Eldon Durham, Minister, telephone, DA 6-6139. Sunday services 9:30 and 11 a.m. Church School, 9:30 a.m. Westminster Fellowship Youth groups, 8:00 and 7:00 p.m. This church welcomes people of all races.

**SOUTH BAY BAPTIST CHURCH**—4545 Sharynne Lane, Seaside Ranchos, Torrance. Rev. Louis Rhoden, minister of visitation, FR 5-3433. Sunday morning worship and elementary school age services at 10:45 a.m. Sunday School, all ages, 9:45 a.m. Sunday evening worship, 7 p.m. Youth fellowship groups, 6 p.m. Sunday, Bible study and prayer meetings, 7:30 p.m. Wednesday, Crib nursery and toddler care is provided at all stated church services.

**SOUTH BAY CHURCH OF GOD**—17661 Yukon Ave., Phone FA 1-2674. Rev. C. L. Tierney, 17615 Yukon, Torrance. First morning service 8:30 a.m.; Sunday school, 9:45 a.m.; second morning service, 11:10 a.m.; Sunday night service, 7:30 p.m. Mid-week services, Wednesday, 7:30 p.m.

**TORRANCE SEVENTH-DAY ADVENTIST**—1610 Acacia Ave., Elder Glenn L. Goffar, pastor. Phone, Residence, FR 5-8731. Church office, FA 8-1540. Sabbath School, 9:30 a.m.; church services, 11 a.m.; Bible study, Wednesday, 7:30 p.m.; young people's meeting, Friday, 7:30 p.m.



**Rated  
No. 1**



DuMont deVillie  
Authentic French Provincial  
Lookout with optional Advanced  
Wireless Remote Control

**HERE'S WHY DUMONT IS first!**

- Completely Hand-Wired
- Only Super-Rated Parts Are Used
- Brightest, Sharpest Picture You've Ever Seen
- Provincial Traditional and Contemporary Styles

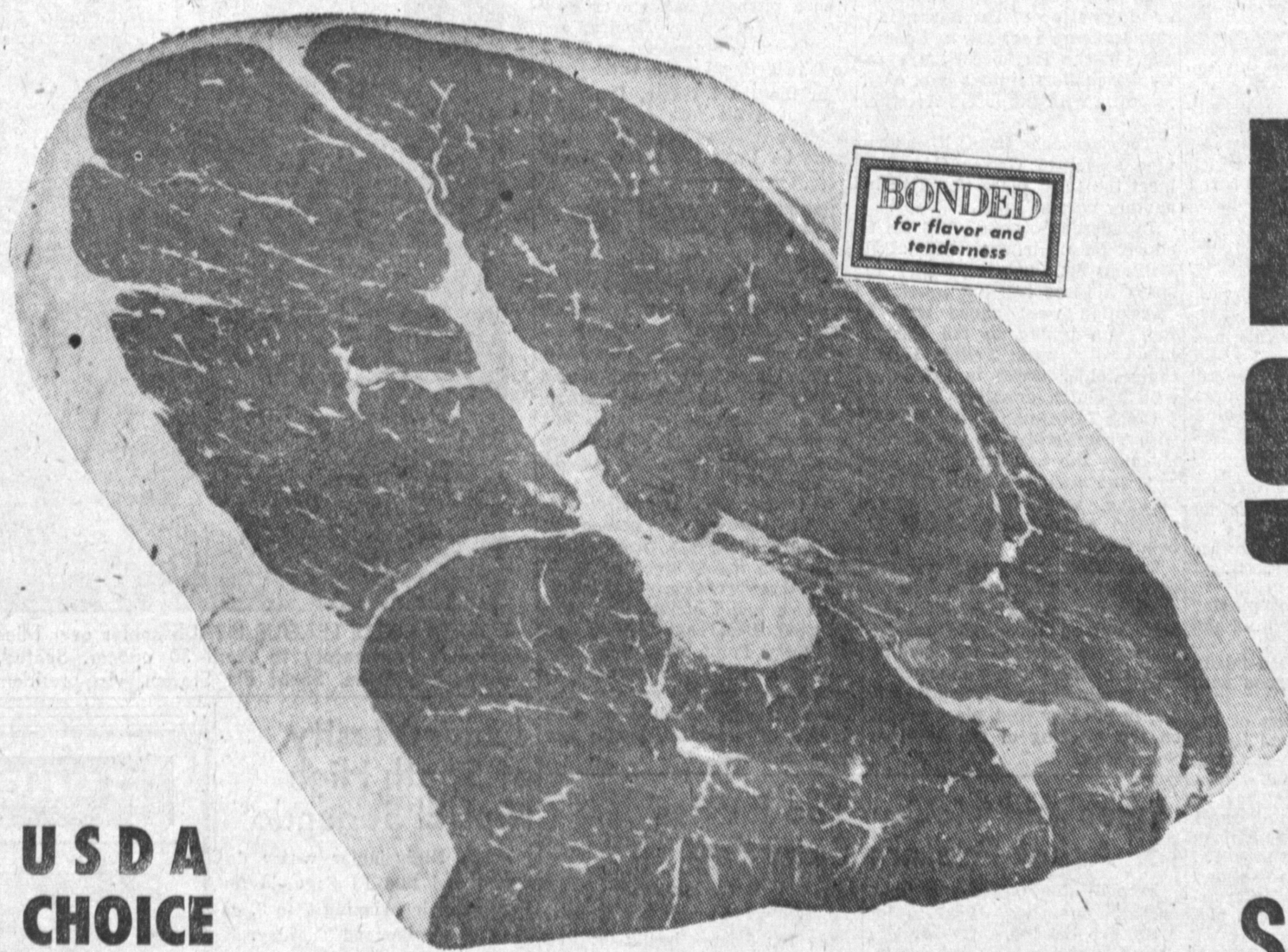
**TV STUDIO**

2223 TORRANCE BLVD. FA 8-6856

DOWNTOWN TORRANCE

Open Nine 'Til 9 P. M.—Sunday, 12 to 5 P. M.

**Lucky**  
STORES



**USDA  
CHOICE**

**Round Roast** "BONDED" **83¢** lb.

Boneless... a delightful treat... "Bonded" for tenderness.

**Ground Round** **65¢** lb.

Precision-cut... fresh, lean, quality steer beef.

**Sliced Bacon** **49¢** lb.

Luer's Quality... Tasty, Hickory Smoked.

**Halibut Steaks** **55¢** lb.

Northern... firm white-meated fish.

**Dover Sole** **69¢** lb.

Fresh Filet... prepare in your favorite way.

## SPRING FRESH PRODUCE BUYS!

**Potatoes** NEW CROP U.S. No. 1 WHITE ROSE **10 LBS 39¢**

First of the season new crop U.S. No. 1 White Rose... you'll want to serve these bright, clean potatoes with your Round Steak dinner... a wonderful selection of sizes.

**Asparagus** LARGE TENDER FRESH **17¢** lb.

Tender, fresh, Spring, fancy quality... thick, firm spears... large size!

**Romaine Lettuce** EXTRA FANCY **3 FOR 14¢**

Extra fancy fresh!!... Large crisp bunches carefully cleaned and trimmed... waste-free.

**Brown Onions** FINEST QUALITY **3 LBS 13¢**

U.S. No. 1 Oregon Danvers... finest quality and large selection of sizes.



PRICES EFFECTIVE... THURS., FRI., SAT., APRIL 21, 22, 23

Limit Rights Reserved... Sales Tax Added to Taxable Items

SURF

Large Box 37c

BREEZE

Giant Box 87c

RINSO BLUE

Large Box 35c

LUX LIQUID DETERGENT

12-oz. 41c

LUX TOILET SOAP

Reg. Bar 11c

LUX TOILET SOAP

Bath Size 2 for 31c

PRICES EFFECTIVE AT THESE

**Lucky - Hiram's**

INGLEWOOD  
La Brea and Hardy

HERMOSA BEACH  
Pacific Coast Hwy. and Gould Lane

REDONDO BEACH  
Pacific Coast Hwy., S. Redondo

TORRANCE  
Cranshaw and Torrance

WEST TORRANCE  
Sepulveda Blvd. at Hawthorne

"NAME THE N  
**Dial Soap**

JOHNSON'S

Floor Wax  
Johnson's Klean Floor Wax.  
Johnson's Pride  
Furniture Wax.  
Glade Deodorizer  
Johnson's.

**Lux**  
ST