

## Hogue Replaces Lee Fox at Head of Civic Group

The Southwest Park Home Owners Association board of directors regrettably has accepted the resignation of President Lee Fox.

Due to job transfer, he was forced to resign. Appointment of Pat Hogue to fill the vacancy was unanimous. Through the efforts of the association, a study of traffic problems on Anza was made with recommendations to the traffic engineer. The recommendations were accepted for stop signs, crosswalks, safety zones, and a traffic signal.

## 100% FINANCING AVAILABLE

Whether Your 40 or 50x100-Ft. Front or Rear Lot  
Paid for or Not! 1 to 24 Units

### CHOOSE THE INCOME TO FIT YOUR NEEDS

The Following Based on \$85 Rental per Mo. per Unit  
Prices Based on Our El Segundo Model

4-UNIT PRICE	\$14,850.00	12-UNIT PRICE	\$34,550.00
INCOME	340.00	INCOME	1,020.00
PAYMENTS	126.00	PAYMENTS	378.00
YOUR PROFIT PER MONTH	\$214.00	YOUR PROFIT PER MONTH	\$642.00

## OPEN HOUSE

SUNDAY  
TO 5 P.M.  
10 A.M.

Now Available  
for Rental

8 Units—1-Bedroom Apartments 2125 PACIFIC COAST HWY.

**T & C CONSTRUCTION CO.**

DA 6-9511 Builders of Homes, Apartments and Commercial DA 6-9511

SOUTH BAY MAIN OFFICE

2125 PACIFIC COAST HIGHWAY

Sundays, 10 a.m. - 10 p.m. Daily 9 a.m. to 9 p.m.



WE GIVE  
BLUE CHIP  
STAMPS



## A Personal Message to the People of Torrance...

"I wish to thank the thousands of my friends who have so warmly supported my bid for re-election. It has been my pleasure to serve as a councilman for the past 12 years and to see Torrance grow from a population of 8000 to 105,000.

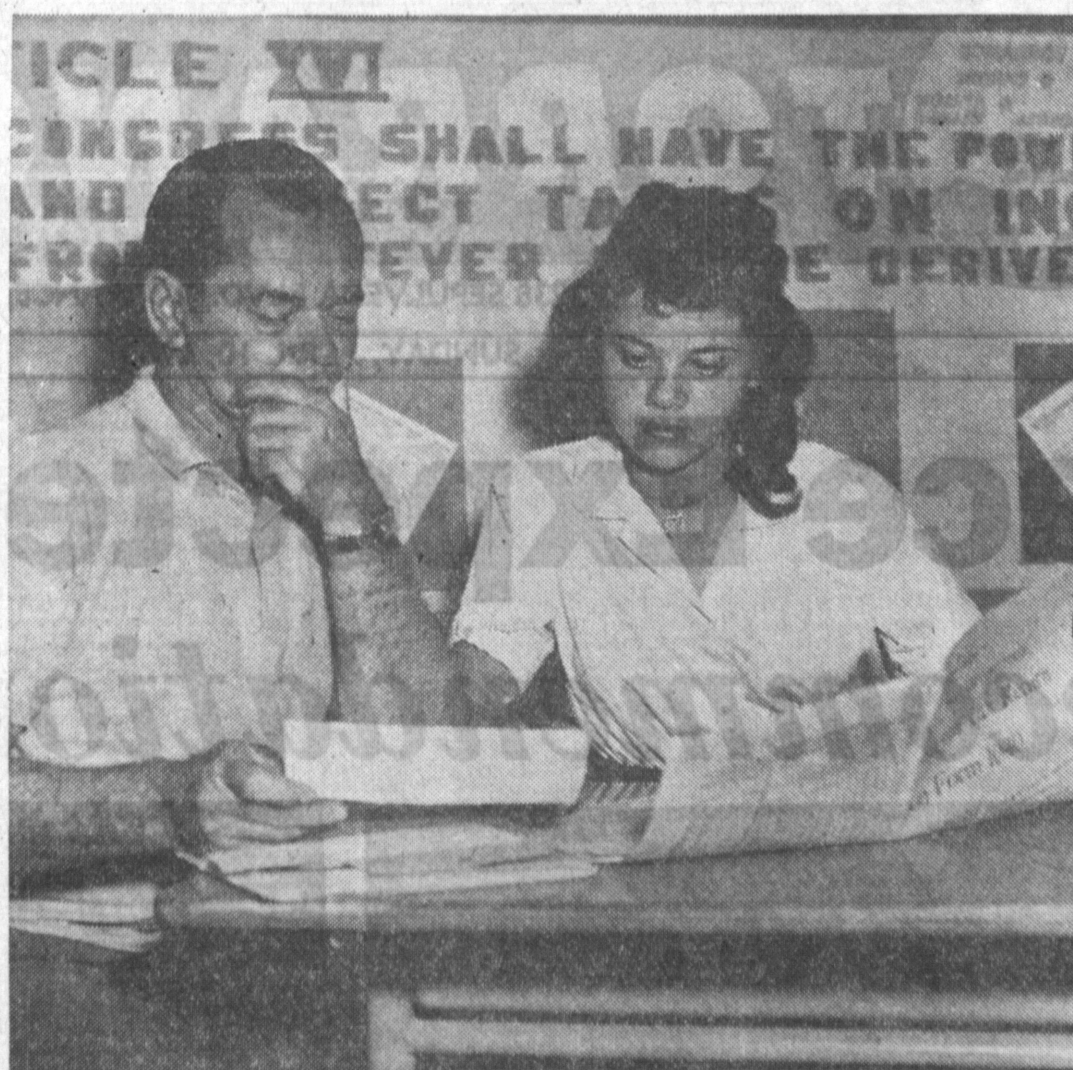
The small part that I have played in this growth has been truly a wonderful and enjoyable experience."

Signed  
Nickolas O. Drale

**NICKOLAS O. DRALE**  
INCUMBENT



(Political Advertisement)



PROBLEMS—These are real—not contrived—as John Hall gets help from daughter Sharon on income tax. Work is part of instruction in eighth grade classes at Magruder School.

## Eighth-Graders Do Income Tax for Parents

Parents in Patrick McManus's eighth-grade class at Magruder School are grateful for their children's math instruction this season.

The students are filling out income-tax forms to practise the types of math they have learned. Their teacher is an expert in preparation of forms, since he was an official of the Pennsylvania Department of Employment 13 years.

The calculations involving percentages, interest, deductions, and other factors are covered. The youngsters also learn government regulations.

Many youngsters help their parents fill out their tax forms. Aircraft worker John Hall, 18228 Ashley Ave., had his daughter, Sharon, fill out his forms, and said, "She did as good or better than I could have done."

"I have found this a practical and effective way to teach math principles," said the teacher. "The youngsters enjoy doing math, and that is half the battle of learning."

## Art Exhibits Set at Pacific Ocean Park

In a departure from typical amusement-park attractions and a first in the field of art, Pacific Ocean Park today announced that during the 1960 season it will present a series of art exhibitions.

First will be Mentor Huebner with a selection of paintings of Los Angeles County.

The Huebner exhibit will include familiar locales, such as "A Touch of Pink" (Highland Park), "Doomed Castles" (Chavez Ravine), "Dust Storm" (Culver City), "Empty Lot" (Lincoln Heights) and "A Blue Mountain and a Golden Hill" (Pasadena).

The exhibit, located in the Sen Lounge of Neptune's Kingdom, is included in admission to the park. It will be open six weeks, starting on opening day, April 9.

Pacific Ocean Park will be in operation daily for Easter vacation now through next Sunday.

## SCHOOLS OUT FOR A WEEK TOMORROW

Torrance schools will have a one-week vacation from April 11 to 15, immediately preceding Easter.

Classes will resume Monday, April 18. The only other vacation remaining this school year will be on Monday, May 30.

The school will end Friday, June 10. Summer school will be in session from June 20 to July 29.



Publication office at 1406 Cravens Ave., Torrance, California. Plant at 2034 So. Hawthorne Blvd., Torrance, California.

Established April 15, 1949  
Published Semi-Weekly, Thursday and Sunday. Entered as second class matter Oct. 8, 1957, at Post Office, Torrance, California, under act of March 3, 1879.  
Adjudicated a legal newspaper by Superior Court, Los Angeles County, Calif. Adjudicated Decree No. L. B. 23368, April 9, 1958.

Office: 1406 Cravens Avenue, Torrance, California  
Plant: 2034 S. Hawthorne Blvd., Torrance, California  
Telephone: FAirfax 8-2345

W. E. Zappas, Publisher  
W. E. King, General Manager  
Earl F. Holbrook, Managing Editor

Subscription Rates  
(Payable in advance)  
Carrier Delivery 40¢ per Month  
Local and Out-of-Town, per Year \$12.00  
All manuscripts submitted at owner's risk. The Torrance Press can accept no responsibility for their return.

## Hillside Students Win Two Awards for Exhibits in City Science Fair

Three Hillside Elementary students were recipients of two awards during the recent Torrance Science Fair at Torrance High School gymnasium. Most of the elementary schools and all high schools of Torrance presented entries.

Carol Bales and Pat Palmer combined their talents in constructing a model depicting a solar eclipse. It was equipped with its own lighting, which gave it a realistic appearance, attracting the attention of many of the visitors to the fair.

These girls were awarded a second-place ribbon and certificate of participation.

In the mathematics division, Elizabeth Davidson presented a unique well-outlined, step-by-step method of computing percentage, which enables the student using

this proven method and eliminate manipulation of decimal points. Miss Davidson was also a second-place award winner.

Miss Bales and Miss Palmer are seventh graders, and Miss Davidson is an eighth-grader.

Use classified. Call DA 5-1515.

## INCOME TAX SERVICE

FR 5-2545

EVA M. SIMMONS

Formerly with the Internal Revenue Bureau

1905 S. CATALINA AVE.

REDONDO BEACH

Open Eves. by Appointment

## Ron's— for —

● LANDSCAPE GARDENING

● DRIFTWOOD

● WATERFALLS

● ARTIFICIAL PLANTS

● ORIENTAL MODERN FIGURINES

● MOSAIC KITS—USE OUR SHOP

AND FREE INSTRUCTIONS

OUR GRAND OPENING will be on the 23rd of April. Come in and see in advance the ONLY SHOP of its kind in Torrance.

2115 TORRANCE BLVD.

FA 0-0939

Come in Saturday or Sunday and Browse



BLUE CHIP STAMPS  
BANKAMERICARD  
INTERNATIONAL  
CREDIT CARD



at ease!

the instant

you ease into

Hart

Schaffner

& Marx

## Sports Clothes

The ease and assurance you feel in the worldly new look of HS&M sport clothes is deliberately planned. The fabrics are considerably light and cool. The tailoring traces the living lines of the body. The styling is spruce, spare and spirited. You look at ease in our HS&M sportswear because you are! HS&M Sport Coats from \$49.50

## TORRANCE MEN'S SHOP

Corner Sartori and Marcelina

Downtown Torrance — Open Friday Nights

