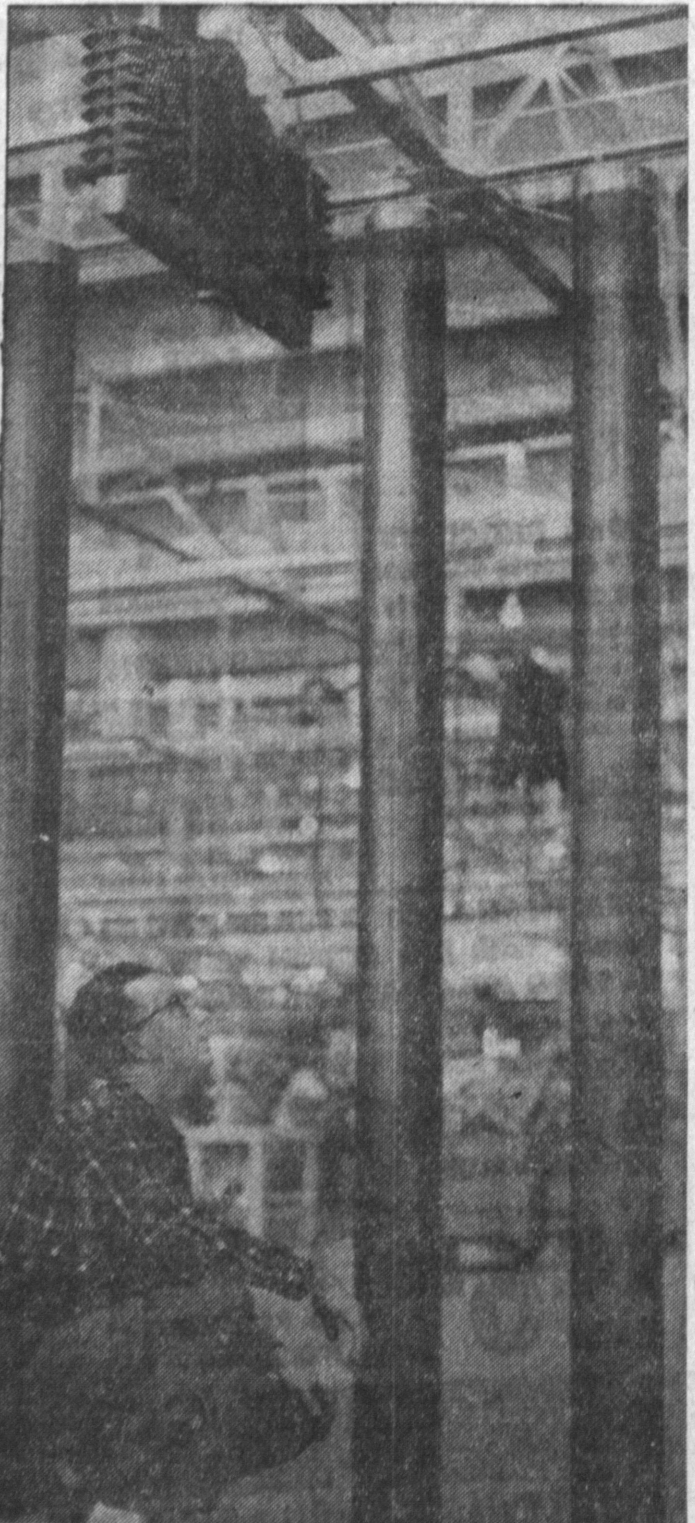


**LIGHT ON YOUR FEET**—That's the mood in these lustrous, calf shoes by Enzel of Paris, a case of perfect shoemanship. Points to prove it: The color bone, beige; the fine detailing, which includes a raised yoke effect centered with a self-bow; and last—a comfortable one for walking and wearing ease.

These are offered by Kinney Shoes, 25928 South Western Ave., two blocks south of Pacific Coast Highway in Harbor City; and 16100 So. Crenshaw Blvd., opposite El Camino College in Gardena. Manager of Harbor City store is Bob Hashaw, while Don Perry heads the Gardena store.



**PRODUCTION STARTED**—Giant "Viper" rocket cases being produced at Ryan in a new contract for Grand Rocket Co. Steel alloy rockets, used to propel high-speed test sleds are 105 inches long and 6 1/2 inches in diameter, according to release.

## Ryan Starts Production of Viper Rocket Chambers

Ryan Aeronautical Co. has begun production of "Viper" rocket chambers for Grand Rocket Co., of Redlands, California, T. Claude Ryan, president, announced today.

Delivery of the first units under the new contract will begin this month, Ryan said. The rocket assemblies are 105 inches long and 6 1/2 inches wide.

Grand Central is the nation's fourth largest company in the solid propellant business. When the rockets are delivered from Ryan, Grand Central will load them with its specially developed propellants.

The steel alloy rockets are used to propel high-speed test sleds, ranging up to the Mach 2 category, utilized at various bases as research tools to check human reactions and to aid in development of such equipment as parachutes, and low level ejection apparatus. In addition, aerodynamic shapes can be checked on such devices.

Prototype production is being performed in the machine shop and manifold area in the main factory building of the San Diego plant.

Ryan has had long experience in rocket production, having built Corporal liquid rocket motors over a period of several years.

## Permits Reveal April Building Activity Hits \$236,782 Valuation

Building activity valuation in Torrance since April 1, 1960 has reached \$236,782, according to H. M. West, Inspector of Buildings.

Topping the list is a permit taken out by Marion W. Gourly for the construction of building costing \$181,000 at 2929 Lomita Blvd. Missile electronics will be manufactured.

Warehouse and factory will be erected at 1101 Engracia by Paul Mandel to cost \$37,500.

An office structure, valued at \$6500 will be built at 21188 Hawthorne Blvd. Other projects and their values are:

Enlarge existing kitchen, 18024 Falda Ave., W. M. Burdick, owner, \$800.

Addition of bedroom and den to residence, 16815 Kristen Ave., Sally Lamm, \$3000.

Block walls at 2810, 2814 and 2818 West 168th St. Walter Kibler, P. Stout and W. Soth, owners.

Rumpus room, 4632 Greenmeadows, J. Banoyzaki, \$2600.

Chain link fence, 3805 180th Place, C. M. Hurst, \$600.

Four-wall furnace, R. DuBry, 3507 229th Place, \$600.

Rumpus Room and fireplace, William Hill, \$2500.

Terraced Garden Wall, Dr. W. W. Mooring, 336 Via El Chico, \$157.

Desert Sign, American Legion hall, 1109 Border Ave., \$125.

## Studebaker-Packard Corporation Plans Stepped-up Sales Drive

Studebaker-Packard Corporation sales officials and zone manager launched plans for a stepped-up Spring sales campaign at a dealer meeting held recently at the Beverly Hilton Hotel in Beverly Hills, according to Herb Schakne, Beach Cities Lark.

S. A. Skillman, vice-president and general Sales Manager, said retail deliveries for the 10 day period ending March 20 totalled

3,532 units, a more than 10% upturn over the previous 10 days, and a 25% increase of Studebaker-Packard's daily sales rate over the previous period.

Studebaker-Packard Lark and Hawk deliveries increased approximately 244% in 1959 over the previous year in the Los Angeles zone, Skillman noted.

Use Press classified ads to buy, rent or sell. Phone FA 8-2345.

## Building Permits for 1959 Show Hike Over 1958

Southern California home building declined in the first two months of 1960, the Security First National Bank's monthly summary of business conditions reported this week.

In Torrance, total valuation of building permits issued in 1958 reached 23,015, compared to 29,920 in 1959. Total number of dwelling units during 1958 was recorded at 688, compared to 1,543 for 1959.

Southern California homebuilding, halting a record breaking level enjoyed in 1959, was down 20% during January and February, revealed the Security Bank researchers.

Total construction activity in the southern half of California has fallen off far less sharply than residential building. During the first two months of 1960, volume has been at a seasonally adjusted annual rate equivalent of \$3,205,000,000, with non-residential building and engineering construction both showing considerable strength.

This represents a decline of only 8% from the average level during the record year of 1959, and is 6% above the 1958 average level, according to the Security Bank research staff.

## March Building Permit Valuation Tops \$6 Million

A total valuation of \$6,638,340 in Torrance building permits were issued for the month of March, according to H. M. West, Inspector of Buildings.

Commercial buildings led with 16 permits for a valuation of \$2,875,000, followed by Single Dwellings with Valuation of \$2,110,250. Multiple buildings of 3 or more units was next with 9 permits for \$988,250 valuation.

Additions, alterations, and repairs to dwelling showed 16 permits for \$165,234 valuation.

## Firm Shows Assets High

Glendale Federal Savings and Loan Association recorded a new all-time high in assets of \$315,800,000 for the period ending March 31, 1960, according to J. E. Hoeft, president and founder.

This represented an increase of \$81,000,000 over the same period last year.

Dividends paid for the first quarter of 1960 by Glendale Federal totalled \$2,736,000, for an increase of \$709,400 over the first quarter of 1959.



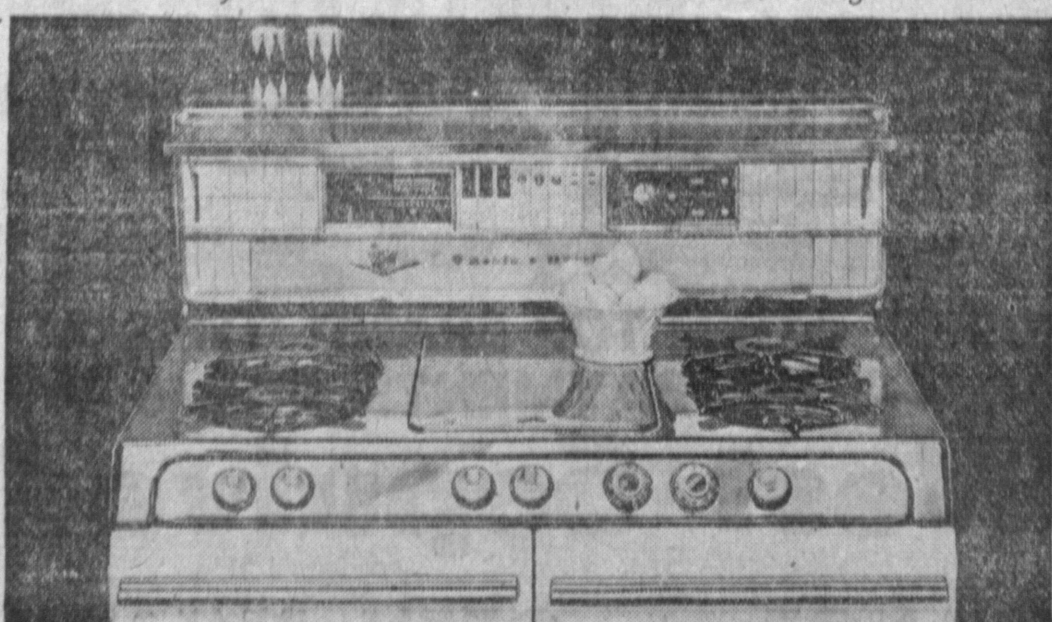
WHY SMART WOMEN COOK WITH MODERN GAS:

## INSTANT on—no warm-up

wait. Even highest cooking temperatures are delivered immediately. On all four high-speed burners at once, if you wish. Small wonder smart women agree: Gas cooking is easier because it's so flexible. From simmer to boil and at 1000 temperatures in between, you're in charge. A modern gas range gives you the finest automatic features—yet costs less to buy and install, costs less to operate, too.

And you don't have to learn to cook all over again!

**GAS**



Range illustrated: beautiful new O'Keefe & Merritt, built to Gold Star Award standards. SOUTHERN CALIFORNIA GAS COMPANY • SOUTHERN COUNTIES GAS COMPANY

# COMPARE

ONLY AMERICA'S  
**LARGEST & STRONGEST**  
GIVES YOU ALL THESE  
**EXCLUSIVE ADVANTAGES**

ASSETS OVER \$750,000,000

**FIRST IN SIZE:** Assets of Home are by far the largest of any state or federal chartered association anywhere in America. A New All-Time National Record.

**FIRST IN STRENGTH:** Home's reserve fund of over \$60 million is the strongest in the history of the savings and loan industry and nearly twice as strong as the next largest association.

**FIRST IN SAFETY:** Behind your savings account at Home stands the safest home loan portfolio of any major financial institution in America. Each account is insured to \$10,000 by the Federal Savings and Loan Insurance Corporation. Also, Home has a perfect 71-year-old withdrawal record. And savers have never lost one single penny.

**FIRST IN CONVENIENCE:** Wherever you live, work or shop in the Southland, America's largest and strongest association is conveniently close. You have all the advantages of America's leading association on the friendly community level.

**FIRST IN SERVICE:** Small or large transaction, new saver or old... you and your savings are always important to Home. Home has a tradition of putting you first that goes back to 1889.

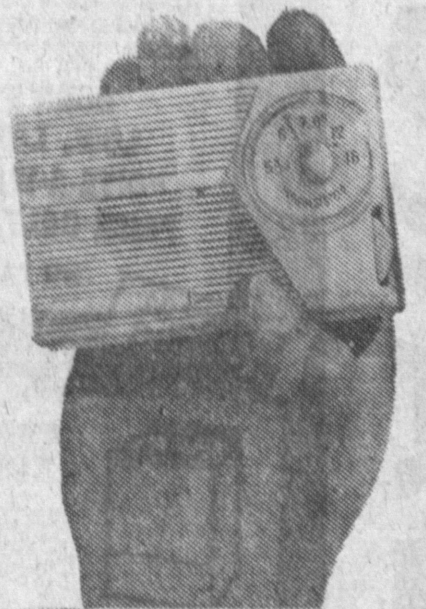
AS USUAL,  
**HOME PAYS**  
**THE HIGHEST**  
**RETURN ON**  
**INSURED**  
**SAVINGS**  
**CONSISTENT**  
**WITH**  
**SAFETY**

...AND ONLY AMERICA'S LARGEST  
& STRONGEST CAN MAKE YOU THIS  
**AMAZING OFFER**

YOU PAY ONLY \$5.00 FOR THIS  
RADIO WHEN YOU ADD \$1,000  
OR MORE IN NEW SAVINGS...  
HOME PAYS THE DIFFERENCE

Get this genuine, quality transistor radio on this unbelievable basis: you pay only \$5.00 and Home Savings pays the rest, as soon as you open a new savings account for \$1,000 or more, or add \$1,000 or more to your present account.

This pocket size transistor radio, complete with battery, is similar to those sold across the nation at leading retail stores.



**FREE** or take your choice of one of these gifts  
WHEN YOU ADD \$1,000 OR MORE IN NEW SAVINGS



A 16-PIECE SERVICE OF SUPREME SILVER-PLATE. Four 4-piece place settings carefully crafted and functionally styled in the "Casual" pattern. Knife, dinner fork, soup spoon, teaspoon.



ATTRACTIVE INGRAMM ELECTRIC ALARM CLOCK. A quality electric alarm clock with sweep second hand. Lustre white case blends with any decor.



AMERICA'S  
LARGEST



All Branches Open  
April 9th, from  
9 a.m. to 1 p.m.

AMERICA'S  
STRONGEST

TORRANCE  
1511 Cravens Avenue  
FAirfax 8-9244

FEDERAL SAVINGS AND LOAN INSURANCE CORPORATION... MEMBER... FEDERAL HOME LOAN BANK SYSTEM

**HAMMOND**  
**ORGANS**  
ALL MODELS  
PRICED FROM

\$25  
DELIVERS

\$920

FREE  
INSTRUCTION



Manhattan Beach... 1415 Sepulveda Blvd. FR 6-7985