

Nora Simmons Joins Moose Club

Nora Simmons became a member of the Torrance Women of the Moose in formal initiation ceremonies Wednesday. She was sponsored by Mae Casson.

Next Wednesday the group will crown its Moose Chapter queen at a meeting in the city's Moose Hall, 1744 W. Carson St.

NEW CAR DIRECTORY

G.M.C. TRUCKS
OLDSMOBILE - CADILLAC

CECIL L. THOMAS & SONS
Terminal 3-5291 - PACIFIC at FOURTH, SAN PEDRO

STUDEBAKER OREGON 8-4005

Dealer Authorized by Studebaker Corporation
to Service the Torrance Area

FRANK H. AFTON CO.
240 N. MARKET, INGLEWOOD

Coffee Klatch Slated

Torrance High School PTA will hold a coffee klatch Wednesday at 10 a.m. at the home of Mrs. Robert Moffitt, 2724 Arlington Ave.

Mmes. Lee McCoy, ways and means chairman; Henry Heinlein; and U. G. Tidmarsh, will be in charge.

Alcoholics

DO YOU NEED HELP?

Don't Wait
'til It's Too Late

—Try—
REFLEXOLOGY

STUDIO
Call DA 6-6655

Fishing Derby Added to Neptune Days Activity

A fishing derby is being added to the list of water events taking place from June 17 through 26 in the 1960 Neptune Days Marinarama according to officials of the Redondo Beach Chamber of Commerce, sponsors of the celebration. The Redondo Beach Rod and Gun Club and their affiliate organization the Ocean Fish Protective Association will be responsible for the derby.

Rules and derby structure are currently being planned and will be announced shortly. It has already been decided however, that the derby will be an "open event." All interested fishermen are being invited to participate.

Use Press classified ads to buy, rent or sell. Phone FA 8-2345.

Community Chest

(Continued from Page One)

mary DeCamp, Hollywood Riviera, residential chairman; Frode B. Kilstofte, Wilmington, advance gifts; and Jane Rye, Lomita, speaker's bureau.

Special city chairman leadership awards were given to Ed Russ, John Traub, Harbor City-Lomita; Robert C. Allen, Palos Verdes; Mrs. R. M. Place, Rolling Hills; Thomas Smith, San Pedro; Harold Frenz, Torrance; and Boyden McElroy, Wilmington.

More than 100 section division and residential unit chairmen were honored for 100% campaign effort.

Earning the highest award to employee groups—the bronze plaque—for pledging at least one-quarter of annual payroll to 171 Red Feather causes were U.S.

Gypsum Co., the Bowl-O-Drome, Coleman Engineering Co., and Devon Motors, Inc., all in Torrance; Liteline, Inc., and B & T Machine, Inc., both in Gardena; and Marineland of the Pacific.

Employee groups receiving the fair share award were California Rubber Products, Inc., and California Yacht Anchorage, Inc., both in San Pedro; Norden division of United Aircraft Corp., C. H. Corrigan, Inc., Taylor Millwork and Stair Co., Inc., Chemical-Contour Corp., Expanded Rubber and Plastics Corp., and Manning, Maxwell and Moore, Inc., all in Gardena.

Firms that contributed a fair share gift to the Chest receiving recognition were:

San Pedro: California Yacht Anchorage, Inc., National Lines Bureau, Inc., and E. K. Wood Lumber and Supply Co.

Wilmington: Metropolitan Stevedore Co., Williams, Dimond and Co., and Gonzalez Restaurant.

Palos Verdes: Marineland of the Pacific.

Torrance: The Bowl-O-Drome; Higgins Brick and Tile Co., Sam Levy Department Store; M & M Transfer Co., R. C. Mahon Co., Horkey-Moore Associates, Liteline Inc., Mayflower Trailer Co., Inc., and Sheridan Gray, Inc.

Gardena: Burg Tool Mfg. Co., Inc., Golden State Rubber and Latex Corp., Advance Tank and Mfg. Co., El Taco Restaurants, Aircraft Hydro Forming Co., Clear View Sanitarium, The Ellis Co., Roadcraft Corp., Rush Chevrolet, B & T Machine, Inc., Diamond Perforated Metals Co., The Horseshoe Club and the Normandie Club.

In addition, outstanding achievement awards were presented to all employees Chest chairmen and commerce and industry volunteers who obtained 100% of quota.

Completing the full annual meeting program were brief words by Cecil Feldman, newly appointed general manager of the Los Angeles Area Welfare Federation, and an installation of Harbor area board officers and new board members by Ed Mills, 1959 Los Angeles Area Chest chairman.

Officers installed to serve through 1960 were Glenn Koger, vice-president and general manager, Rome Cable Corp., re-elected board chairman; and Jim Becker, first vice-chairman and John G. Someborn, San Pedro District commercial manager, Pacific Telephone and Telegraph Co., second vice-chairman.

Officers installed to serve through 1960 were Glenn Koger, vice-president and general manager, Rome Cable Corp., re-elected board chairman; and Jim Becker, first vice-chairman and John G. Someborn, San Pedro District commercial manager, Pacific Telephone and Telegraph Co., second vice-chairman.

Officers installed to serve through 1960 were Glenn Koger, vice-president and general manager, Rome Cable Corp., re-elected board chairman; and Jim Becker, first vice-chairman and John G. Someborn, San Pedro District commercial manager, Pacific Telephone and Telegraph Co., second vice-chairman.

Officers installed to serve through 1960 were Glenn Koger, vice-president and general manager, Rome Cable Corp., re-elected board chairman; and Jim Becker, first vice-chairman and John G. Someborn, San Pedro District commercial manager, Pacific Telephone and Telegraph Co., second vice-chairman.

Officers installed to serve through 1960 were Glenn Koger, vice-president and general manager, Rome Cable Corp., re-elected board chairman; and Jim Becker, first vice-chairman and John G. Someborn, San Pedro District commercial manager, Pacific Telephone and Telegraph Co., second vice-chairman.

Officers installed to serve through 1960 were Glenn Koger, vice-president and general manager, Rome Cable Corp., re-elected board chairman; and Jim Becker, first vice-chairman and John G. Someborn, San Pedro District commercial manager, Pacific Telephone and Telegraph Co., second vice-chairman.

Officers installed to serve through 1960 were Glenn Koger, vice-president and general manager, Rome Cable Corp., re-elected board chairman; and Jim Becker, first vice-chairman and John G. Someborn, San Pedro District commercial manager, Pacific Telephone and Telegraph Co., second vice-chairman.

Officers installed to serve through 1960 were Glenn Koger, vice-president and general manager, Rome Cable Corp., re-elected board chairman; and Jim Becker, first vice-chairman and John G. Someborn, San Pedro District commercial manager, Pacific Telephone and Telegraph Co., second vice-chairman.

Officers installed to serve through 1960 were Glenn Koger, vice-president and general manager, Rome Cable Corp., re-elected board chairman; and Jim Becker, first vice-chairman and John G. Someborn, San Pedro District commercial manager, Pacific Telephone and Telegraph Co., second vice-chairman.

Officers installed to serve through 1960 were Glenn Koger, vice-president and general manager, Rome Cable Corp., re-elected board chairman; and Jim Becker, first vice-chairman and John G. Someborn, San Pedro District commercial manager, Pacific Telephone and Telegraph Co., second vice-chairman.

Officers installed to serve through 1960 were Glenn Koger, vice-president and general manager, Rome Cable Corp., re-elected board chairman; and Jim Becker, first vice-chairman and John G. Someborn, San Pedro District commercial manager, Pacific Telephone and Telegraph Co., second vice-chairman.

Officers installed to serve through 1960 were Glenn Koger, vice-president and general manager, Rome Cable Corp., re-elected board chairman; and Jim Becker, first vice-chairman and John G. Someborn, San Pedro District commercial manager, Pacific Telephone and Telegraph Co., second vice-chairman.

Officers installed to serve through 1960 were Glenn Koger, vice-president and general manager, Rome Cable Corp., re-elected board chairman; and Jim Becker, first vice-chairman and John G. Someborn, San Pedro District commercial manager, Pacific Telephone and Telegraph Co., second vice-chairman.

Officers installed to serve through 1960 were Glenn Koger, vice-president and general manager, Rome Cable Corp., re-elected board chairman; and Jim Becker, first vice-chairman and John G. Someborn, San Pedro District commercial manager, Pacific Telephone and Telegraph Co., second vice-chairman.

Officers installed to serve through 1960 were Glenn Koger, vice-president and general manager, Rome Cable Corp., re-elected board chairman; and Jim Becker, first vice-chairman and John G. Someborn, San Pedro District commercial manager, Pacific Telephone and Telegraph Co., second vice-chairman.

Officers installed to serve through 1960 were Glenn Koger, vice-president and general manager, Rome Cable Corp., re-elected board chairman; and Jim Becker, first vice-chairman and John G. Someborn, San Pedro District commercial manager, Pacific Telephone and Telegraph Co., second vice-chairman.

Officers installed to serve through 1960 were Glenn Koger, vice-president and general manager, Rome Cable Corp., re-elected board chairman; and Jim Becker, first vice-chairman and John G. Someborn, San Pedro District commercial manager, Pacific Telephone and Telegraph Co., second vice-chairman.

Officers installed to serve through 1960 were Glenn Koger, vice-president and general manager, Rome Cable Corp., re-elected board chairman; and Jim Becker, first vice-chairman and John G. Someborn, San Pedro District commercial manager, Pacific Telephone and Telegraph Co., second vice-chairman.

Officers installed to serve through 1960 were Glenn Koger, vice-president and general manager, Rome Cable Corp., re-elected board chairman; and Jim Becker, first vice-chairman and John G. Someborn, San Pedro District commercial manager, Pacific Telephone and Telegraph Co., second vice-chairman.

Officers installed to serve through 1960 were Glenn Koger, vice-president and general manager, Rome Cable Corp., re-elected board chairman; and Jim Becker, first vice-chairman and John G. Someborn, San Pedro District commercial manager, Pacific Telephone and Telegraph Co., second vice-chairman.

Officers installed to serve through 1960 were Glenn Koger, vice-president and general manager, Rome Cable Corp., re-elected board chairman; and Jim Becker, first vice-chairman and John G. Someborn, San Pedro District commercial manager, Pacific Telephone and Telegraph Co., second vice-chairman.

Officers installed to serve through 1960 were Glenn Koger, vice-president and general manager, Rome Cable Corp., re-elected board chairman; and Jim Becker, first vice-chairman and John G. Someborn, San Pedro District commercial manager, Pacific Telephone and Telegraph Co., second vice-chairman.

Officers installed to serve through 1960 were Glenn Koger, vice-president and general manager, Rome Cable Corp., re-elected board chairman; and Jim Becker, first vice-chairman and John G. Someborn, San Pedro District commercial manager, Pacific Telephone and Telegraph Co., second vice-chairman.

Officers installed to serve through 1960 were Glenn Koger, vice-president and general manager, Rome Cable Corp., re-elected board chairman; and Jim Becker, first vice-chairman and John G. Someborn, San Pedro District commercial manager, Pacific Telephone and Telegraph Co., second vice-chairman.

Officers installed to serve through 1960 were Glenn Koger, vice-president and general manager, Rome Cable Corp., re-elected board chairman; and Jim Becker, first vice-chairman and John G. Someborn, San Pedro District commercial manager, Pacific Telephone and Telegraph Co., second vice-chairman.

Officers installed to serve through 1960 were Glenn Koger, vice-president and general manager, Rome Cable Corp., re-elected board chairman; and Jim Becker, first vice-chairman and John G. Someborn, San Pedro District commercial manager, Pacific Telephone and Telegraph Co., second vice-chairman.

Officers installed to serve through 1960 were Glenn Koger, vice-president and general manager, Rome Cable Corp., re-elected board chairman; and Jim Becker, first vice-chairman and John G. Someborn, San Pedro District commercial manager, Pacific Telephone and Telegraph Co., second vice-chairman.

Officers installed to serve through 1960 were Glenn Koger, vice-president and general manager, Rome Cable Corp., re-elected board chairman; and Jim Becker, first vice-chairman and John G. Someborn, San Pedro District commercial manager, Pacific Telephone and Telegraph Co., second vice-chairman.

Officers installed to serve through 1960 were Glenn Koger, vice-president and general manager, Rome Cable Corp., re-elected board chairman; and Jim Becker, first vice-chairman and John G. Someborn, San Pedro District commercial manager, Pacific Telephone and Telegraph Co., second vice-chairman.

Officers installed to serve through 1960 were Glenn Koger, vice-president and general manager, Rome Cable Corp., re-elected board chairman; and Jim Becker, first vice-chairman and John G. Someborn, San Pedro District commercial manager, Pacific Telephone and Telegraph Co., second vice-chairman.

Officers installed to serve through 1960 were Glenn Koger, vice-president and general manager, Rome Cable Corp., re-elected board chairman; and Jim Becker, first vice-chairman and John G. Someborn, San Pedro District commercial manager, Pacific Telephone and Telegraph Co., second vice-chairman.

LOW PRICES . . . BLUE CHIPS . . . & NOW IT'S COFFEE TIME AT FOOD GIANT!



Rich, fragrant coffee starts the day—and the week—off right! Any week and every week's the time to shop at Food Giant where you get low prices and Blue Chip Stamps, too!

ALL GRINDS • Rich & Flavorful

FOLGER'S COFFEE



1-lb. Can

55¢

SLICED • Golden Hawaiian

Dole Pineapple 5 No. 1 1/2 Cans **\$1**

MACARONI & CHEESE • For Easy Lenten, Meals

Kraft Dinners

CHICKEN OF THE SEA • Light Meat

CHUNK TUNA

WATER SOFTENER • Kind to Clothes

RAINDROPS

7 1/2-oz. Pkg. **17¢**

Jumbo No. 3/4 Can **39¢**

3 1/2-lb. Package **49¢**

MA PERKINS • Tasty

PORK & BEANS

6 Large No. 2 1/2 Cans **\$1**

GOLDEN CREME • Imitation

ICE MILK

33¢ 1/2-gal. Carton

FARM FRESH PRODUCE

PIQUANT WITH FLAVOR

WINESAP APPLES

10¢ lb

SNOW-WHITE • CRISPY

Cauliflower

10¢ ea. LARGE HEAD

Soft As A Spring Breeze!

KLEENEX TISSUE

White, Pink or Aqua

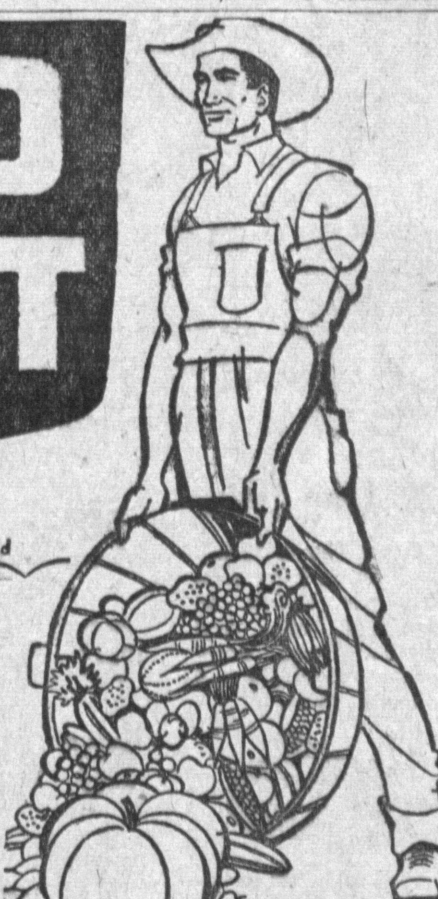


LARGE

400 COUNT

PACKAGE

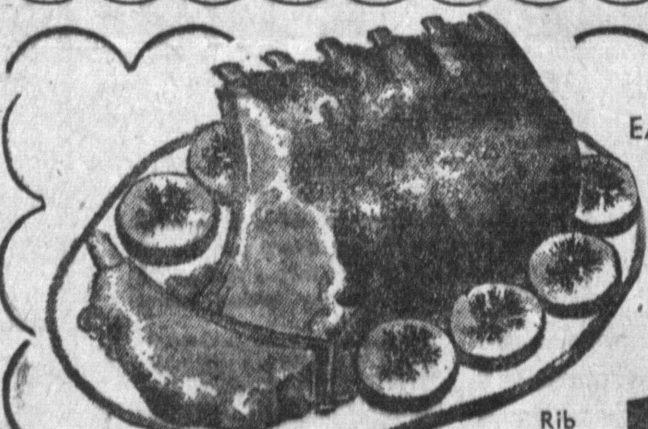
21¢



We Give

BLUE CHIP

STAMPS



EASTERN • GRAIN-FED

PORK LOIN ROAST

39¢ lb

COUNTRY STYLE MEATY PORK

SPARE RIBS

45¢ lb

Really Flavorful! Sirloin Pork Cutlets **59¢** lb

FOOD GIANT'S • BANQUET PERFECT

Pork Sausage 3 1-lb. Rolls **\$1**

Pork Butt Steaks 49¢ lb

From icy Northern Waters • Boneless

Fresh Fillet of Sole

Crispy french-fried fillet of sole makes a tempting meal for Lent . . . or anytime. Pop some in your freezer! **69¢** lb

FRESH FROZEN • From Alaska

KING CRAB CLAWS

Meaty Delicious **59¢** lb

For attractive and elegant hors d'oeuvres, try these! Serve with spicy tartar sauce or Snider's seafood sauce!

REGULAR • WHITE

LIFEBUOY SOAP

1c SALE 4 Reg. Bars **33¢** You Pay

DELICATESSEN

OSCAR MAYER Sliced Liver-Cheese Loaf

39¢ 7-oz. Pkg.

PICTSWEEP • Frozen CUT CORN

21¢ 10-oz. Pkg.

VAN CAMP SPANISH RICE

23¢ 15-oz. Can

VANO • Liquid STARCH

55¢ 1/2-gal. Btl.

MONARCH • Cut Green BEANS • Dietetic

35¢ 2 8-oz. Cans

WOODBURY TOILET SOAP

34¢ 3 Reg. Bars

LIBBY • Frozen POTATO PUFFS

27¢ 11-oz. Pkg.

KRAFT MIRACLE WHIP

59¢ 8-oz. Jar

SARA LEE • Frozen CHEESE CAKE

69¢ 11-oz. Pkg.



In Gardena

14990 S. Crenshaw at Compton Blvd.

In Hawthorne

423 S. Hawthorne Blvd. at 132nd

In Inglewood

11202 S. Crenshaw Blvd. At Imperial

In Los Angeles

11208 S. Western Ave. at Imperial

In Manhattan Beach

2400 Sepulveda Blvd. at Marine

In North Torrance

4848 W. 190th St. at Anza

In Torrance

3721 Pacific Coast Hwy. at Hawthorne

In San Pedro

28849 S. Western Avenue

PRESS WANT-ADS DA 5-1515

Classification INDEX

ANNOUNCEMENTS
Legal Notices 1
Announcements 2
Funeral Homes 3
Cemeteries 4
Cards of Thanks 5
Lost and Found 6
Personals 7
Transportation 8
Real Estate 9
Health Aids 10
Do-it-yourself 11

SERVICES
Professional Services 12
Bookkeeping Service 13
Income Tax 14
Home and Business 15
Maintenance - Business and 16
Residential 17
Improvement Services 18
Painting and Decorating 19
Building and Remodeling 20
Building Contractors 21
Equipment Rentals 22
Plumbing Services 23
Gardening and Landscaping 24
Nurseries 25
Rug and Upholstery Cleaners 26
Moving and Movers 27
Instruction 28
Theatrical 29
Dress Making, Alterations 30
Child Care 31
Miscellaneous Services 32

EMPLOYMENT
Situations Wanted (Men) 33
Situations Wanted (Women) 34
Employment Offered (Men) 35
Employment Offered (Women) 36
Employment Offered (Men and Women) 37

FINANCIAL
Business Opportunities 38
Insurance 39
Money to Loan 40
Real Estate Loans 41
Mortgages (Trust Deeds) 42
Real Estate Loans Wanted 43
Mortgages (Trust Deeds) 44
Homes Built On Your Lot 45
Stocks and Bonds 46

REAL ESTATE
Homes For Sale 47
Real Estate Trades 48
Summer Cottages and Resorts 49
Lots for Sale (Business and 50
Residential) 51
Income Property For Sale 52
Business Properties 53
For Sale or Lease 54
Industrial Properties 55
For Sale or Lease 56
Acreage, Farms, Ranches 57
Buildings to be Moved 58
Property Management 59
Acreage Wanted 60
Real Estate Wanted 61
Stores & Offices for 62
Rent or Lease 63

REAL ESTATE
RENTALS
Houses for Rent (Unfurnished) 64
Houses for Rent (Furnished) 65
Apartments for Rent (Unfurnished) 66
Apartments for Rent (Furnished) 67
Resorts & Cabin Rentals 68
Rooms and Board 69
Room and Board 70
Rentals (Commercial) 71
Rentals Miscellaneous 72
Rentals to Rent 73

MISCELLANEOUS
Furniture 74
Furniture Wanted 75
Appliances 76
Rugs, Carpets, Floor Covering 77
Antiques 78
Radio, Television 79
Radio and T.V. Service 80
Equipment (Store and Office) 81
Sewing Machines 82
Musical Instruments 83
(Sales and Service) 84
Children's Column 85
Photo Supplies 86
Pets, Poultry and Supply 87
Boats, Sales and Services 88
Sporting Goods 89
Trailers Wanted 90
Trailers for Sale 91
Trailer Service 92
Trailer Rentals 93
Trailer Parks 94
Trucks and Trailers 95
Clothing and Jewelry 96
Miscellaneous for Sale 97
Swaps 98
Miscellaneous Wanted 99

AUTOMOTIVE
Trucks for Sale 100
Trucks for Rent 101
Truck Wanted 102
Motorcycles for Sale 103
Motorcycles Wanted 104
Auto Repairs 105
Auto Parts 106
Automobiles for Sale 107
Automobiles for Rent 108

Announcements
"35 Years Dependable Service"
(Bankers and International Cards Accepted)

Action

Automotive 'Shops
Brake Tune-Ups

"We Specialize" Terms
2420 Hawthorne Blvd., Waltham
667 S. Market, Inglewood
FR 8-5271 OR 8-4844

Lost and Found 12

BLACK FEMALE DOG

BROWN MARKINGS
On face & feet, 12 yrs, 30 lbs.
Teeth out on upper left, 5 toes on
hind feet. Ans. to Butch. Reward.
FR 6-1145 OR 2-2808

BLOND Cocker Spaniel, lost Wednesday, V.C. 232 Pl. & 234th St. Reward \$100.
FR 4-6785

Income Tax 38