

Tip to Toe

By Sylvia Miller
Fashion Editor

Sheer Delights

The calendar may not give official sanction . . . but as far as we're concerned . . . it's spring! With nary a trace of a robin, with California seasons scarcely distinguishable, one from another . . . there's still something in the air that spells change, awakening, romance.

Maybe it's just the yearning we hear expressed by friends and readers for a new dress, a new something in the wardrobe.

Maybe it's the inside glimpse we've been getting of springtime fashions . . . California designed ones, that is. If ever a woman had the chance to be dreamy, yummy, feminine and free, she has it now!

Fluid fabrics, floating and filmy, find their way by night and day. Souffle chiffon, sheerest voile, purest silks, all give a delightful look of a lady at her loveliest.

If your wardrobe is bare of this softened look . . . if all your clothes seem stiff enough to stand at attention by themselves . . . lady, it's time indeed for a new dress.

What else is new for Spring?

Prints, prints, prints . . . as long as they're whispery soft. No shouting allowed by this year's lady-like look, either in color or fabric.

Stoles, stoles, stoles . . . returning to Southern California where they originally bloomed as a fashion must. Some stoles accompany a matching dress. Separate ones are available in neutral pastels and white . . . newer than sweaters over your sleeveless sheaths or to drape becomingly over cocktail and ball gowns.

Suits, suits, suits . . . as long as they're made of silk. Cropped jackets or long, belted, or loose . . . fine suits of Italian silk, often looking like tweed or linen, but silk nevertheless . . . will serve you well.

(Advertisement)

Local Office Offers Help to Pensioners

Senior citizens seeking aid in obtaining glasses under the liberalized California pension law find a cordial welcome at the ground floor office of Dr. J. M. Soss, Optometrist, at 1268 Sartori Ave., Torrance. Dr. Soss, in the harbor area for 32 years, assists pensioners in determining their eligibility for glasses and relieves them of all details after eligibility has been confirmed. All the pensioner needs to do is bring the name of his social worker and medical identification card. Comfortable, private facilities are provided and arrangements can be completed in the shortest possible time. No appointment is necessary. Dr. Soss emphasizes that those availing themselves of this assistance are placed under no obligation whatever. Soss optical services are complete, including the grinding of lenses in his own laboratories. Phone FA 8-6602. Open Friday evenings and all day Saturdays. Offices in Long Beach and Wilmington.

Brownie Troop Entertains at Hawaiian Party

Brownie Troop 1576 held a Hawaiian party recently, at the home of Mr. and Mrs. Julian Tielen.

Brownies wore hula skirts and leis they had made under supervision of troop leaders, Mmes. L. B. Brannon and Earl Sanders. An interpretive reading and hula dance was performed by members. Refreshments followed a Hawaiian theme.

Members attending were Peggy Brannon, Sharon Mathews, Peggy Meyer, Terry Mills, Diane Nuttmann, Patricia Phipps, Edithann Sanders, Gail Snudden, Karen Tompkins, Carol Watson, Patti White, and Mary Wood. Guests were Mmes. Delbert Mathews, Hubert Meyer, Henry B. Mills, Robert Snudden, Randolph Watson, L. B. White, and L. E. Wood.

Also Karen White, Beverly

Lioness Club Plans Election

The Torrance Lioness Club appointed Mrs. Fred Boren chairman of its nominating committee at a recent meeting in the home of Mrs. Paul Diamond.

Serving with Mrs. Boren will be Mmes. William King and Mott Farrell.

Members discussed plans to entertain South and North Torrance Lionesses Clubs at a party in April.

Mrs. Ray Wyatt is event chairman. Her committee comprises Mmes. Clarence Clark, Dale Harter, Cecil Powell, John Ritchie, and Kenneth Olson.

The group will hold its next meeting Tuesday at 8 p.m. in the home of Mrs. Ernest Harris, 169 Vista Del Parque, Redondo Beach.

Brannon, Deborah Meyer, Lynn Mills, Susan Watson, Diane Brannon, and Bobbie Snudden.

Madrona School Elects Officers

Jimmy King has been elected student-body president at Madrona Elementary School.

Other new officers chosen in the student balloting were Cheryl Browne, vice president; Julia Takayama, secretary-treasurer; Jon Hadley, boys' athletic director; and Jackie Bliss, girls' athletic director.

Edison Dividends Rise

Common stock earnings of \$3.80 a share, up 10 cents from the preceding year, are announced in Southern California Edison Company's annual stockholders report, released yesterday.

Girl Scouts Hold Awards Court

Girl Scout Troop 2028 held its first Court of Awards, in the Carl Steele School cafeteria. All Scouts received Second Class Rank.

Year pins were given to Kathleen Doran, Christine Dutton, Janice Thompson, Rita Scott, Lynda Tilley, Kathy Steele, and Carla Brown.

Elaine De Orle received the Dog and Cat Proficiency Badge. Also attending were Jackie Bonawitz, Darleann Eaton, Susan Coleman, Cynthia Dawson, Gail Kerns, Gwenda Hawkins, Lurena Pierce, Cookie Trader, and Claudia Whittam.

The program for the evening, included displays on pets, leaves and scrapbooks; a lecture on

Awards Court

Girl Scouts in foreign countries; and a demonstration of knot tying and First Aid.

A plaque was presented to Mr. R. W. Whittam, sponsor of troop.

Coffee, punch, and cookies, made by the Scouts, were served. Troop 2080 is under leadership of Mmes. Ray Bonawitz, Paul Eaton and Al Hawkins. Mrs. Hawkins received her Leader's Pin at the meeting.

INCOME TAX SERVICE

FR 5-2545

EVA M. SIMMONS
Formerly with the Internal Revenue Bureau
1905 S. CATALINA AVE.
REDONDO BEACH
Open Eves. by Appointment

GALVANIZED
BIG PIPE SALE!
THIS PIPE IS ALL NEW DOMESTIC PIPE
THESE PRICES ARE BELOW WHOLESALE

1/2"	12c ft.	1 1/4"	25c ft.
3/4"	16c ft.	1 1/2"	32c ft.
1"	22c ft.	2"	45c ft.

CORRUGATED ALUMINUM

2 ft. x 6 ft.	1.50	2 ft. x 8 ft.	2.00
2 ft. x 10 ft.	2.50	2 ft. x 12 ft.	3.00

ALUMINUM SHEET, PLATE BAR, ANGLES AND CHANNELS
35¢ lb and up

We will cut Steel, Brass, Aluminum and Copper to Your Size as Needed

DIE SHOES - VISES - TOOLS - WORK BENCHES - CABINETS - BIG SAVINGS - SURPLUS BARGAINS

FA 1-1130 13400 S. Western DA 9-3022

HAMMOND ORGANS
ALL MODELS
PRICED FROM
\$25 DELIVERS \$920 FREE INSTRUCTION

Penny-Owsley
MUSIC COMPANY

Manhattan Beach . . . 1415 Sepulveda Blvd. . FR 6-7985

DO YOU OWN A SMALL BUSINESS?
Operating out of your home . . . perhaps?
If So . . . Investigate
Telephone Answering Service
It Costs Less Than 3c an Hour

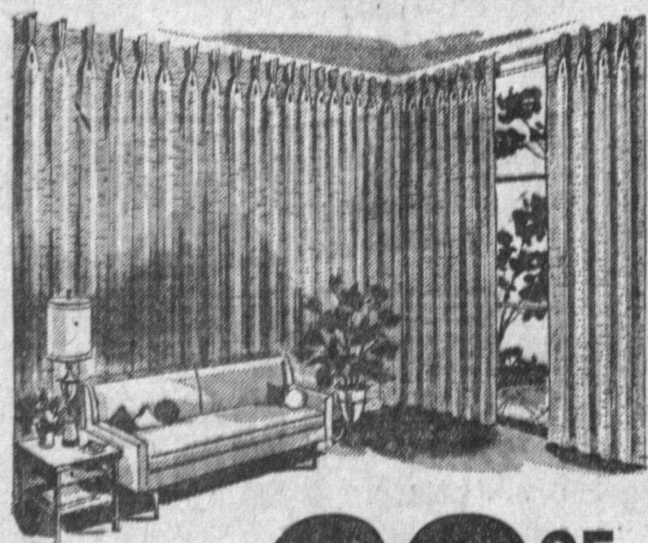
WE'LL TAKE YOUR MESSAGES
MAKE APPOINTMENTS FOR YOU
AND BE THE BEST RIGHT HAND YOU EVER HAD!

FOR INFORMATION CALL:
FAirfax 8-5252

Open 24 Hours—We Never Close
ANSERFONE
WRIGHT TELEPHONE ANSWERING SYSTEM

Kenfurn CUSTOM DRAPERIES

Are S-o-o-o Inexpensive



10 feet of Windows

39⁹⁵
Completely Installed

★ MADE IN OUR OWN WORKSHOP
★ FAST DELIVERY!
Most Draperies Installed Within One Week

- ★ 16 YDS. MATERIAL
- ★ 6 WIDTHS
- ★ DOUBLE HEMMED
- ★ FRENCH PLEATED
- ★ LEAD WEIGHTS
- ★ FAN FOLDED
- ★ SEWN TO MEASUREMENT
- ★ KIRSCH TRAVERSE RODS

10,000 YARDS OF MATERIAL TO SELECT FROM

Call us for FREE ESTIMATES on your Drapery or Decorating Needs

KENFURN DRAPERIES

A DIVISION OF KEN'S FURNITURE

2416 Redondo Beach Blvd — Redondo Beach

Tues., Wed., Thurs., Fri. 10 'til 9 P.M. FR 9-1312
Sat., Sun., Mon. 'til 5 P.M. OR 8-6509

Bigelow SUNSET TWEED
Solution-dyed, stain-resistant broadloom . . . a durable carpeting that looks expensive but isn't. And you have a selection of many clear, lustrous colors.
\$239
Completely Installed 40 sq. yds. for

TAKE YOUR PICK!
Your Choice . . . Standing Wall-to-Wall Carpeting Values . . . to Fit Any Budget

OUR PRICE INCLUDES:
• HENRY PRODDING
• TACKLESS INSTALLATION
• ALL DOOR METALS
• EXPERT WORKMANSHIP

ONE LOW PRICE . . . COMPLETELY INSTALLED OVER HEAVY 50 OZ. RUBBERIZED WAFFLE PADDING.
40 SQ. YD. DIAGRAM

Bigelow WESTERN LIVING
All wool wilton broadloom in beautiful treebark texture. Tightly woven for years of extra wear. In many decorator colors, both solids and tweed patterns. 12' and 15' widths.
\$359
Completely Installed 40 sq. yds. for

Aldon's GOLD RUSH
Quality wool-nylon broadloom in 16 exquisite pastel shades, made exclusively for us. Tested by U.S. Laboratory and proved to outwear any all-wool carpet at this price 2 to 1. 12' and 15' widths.
\$319
Completely Installed 40 sq. yds. for

NO MONEY DOWN • 3 YEARS TO PAY • BANK TERMS • And remember . . . you can buy cheaper carpeting, but you can't buy Carpet Town quality at lower . . . or even the same . . . prices!

CALL TODAY

See samples in your own home, day or evening. No obligation of course.

FR. 5-0518



Carpet Town
THE FIRST NAME IN QUALITY CARPETING AT THE LOWEST PRICES

DEL AMO CENTER ANNEX

IN TORRANCE

3822 Sepulveda Blvd.
Corner of Hawthorne Blvd., Torrance

OPEN WEEKDAY EVES 'TIL 9 — SUNDAYS 11-5
SATURDAYS 9 'TIL 5

Carpet Town guarantees tomorrow what we sell today! All 250 full rolls of carpet in our Torrance store are fully guaranteed 1st quality. Don't be misled by so-called "bargain" seconds.