



Von Moffett Takes Over at DeVon Motors

Von Moffett this week took over sole ownership of DeVon Motors, and announced appointment of James Panos as general manager of DeVon's Plymouth, Valiant, Triumph dealership at 1600 Cabrillo Ave.

Moffett, president of the DeVon, has been in the auto business 25 years, and has built up the largest Plymouth, Valiant, and Triumph dealership in the South Bay area.

Panos last year brought the \$1500 Chrysler agency award to DeVon. He has had 10 years in the automotive field, and has been with DeVon for three years. The high sales volume at DeVon Motors is due to service and an adequate supply of cars at all times, Panos said.

Business Climate

(Continued from Page C)

In summing up the "Good Business Climate," the writer experienced a real thrill in a recent business trip East. While sitting in the office of the vice-president of the Irving Trust Co. in New York City (No. 1—Wall Street), he was informed the Irving Trust Co. has referred three of their clients to Torrance because of the items just mentioned.

As Torrance residents you have every reason to be proud of your city and its leadership!

In the mill for 1960 thus far are close to 500 homes under construction and 350 more on the planning boards, plus 150 apartment buildings.

Building permits for January were \$5,000,000, leading all California cities but 4. There remains 2000 acres of undeveloped property—1100 under industrial zoning. This will allow for continued expansion in all areas.

Retail sales were up close to \$9,000,000 in the past year. The increase alone means \$90,000 in our city offices as a result of sales-tax revenue.

At least 15 top retail stores are slated to begin operation in 1960 and there are four new industries as yet unannounced. One could go on and on quoting facts proving the wonderful future that is Torrance's—suffice it to say the facts are there!

Where do we go—no place but up!



NEW OWNER—Von Moffett (right) has taken over entire operation of DeVon Motors, 1600 Cabrillo. Moffett, formerly a partner, named Jim Panos, shown with him, as general manager.

—Press Photo

DENTURES

- IMMEDIATE DENTURES
- NEW MAGNETIC DENTURES
- EXTRACTIONS WITH SLEEP
- SAME LOW PRICES (We Arrange)

- REPAIRS...RELINES
- While U Wait
- Pensioners Welcomed
- DIFFICULT CASES
- No Extra Charge
- OPEN EVENINGS AND SATURDAYS

DR. WHARTON
Member California Society of Dental Surgeons

NO OTHER DENTIST IN OFFICE

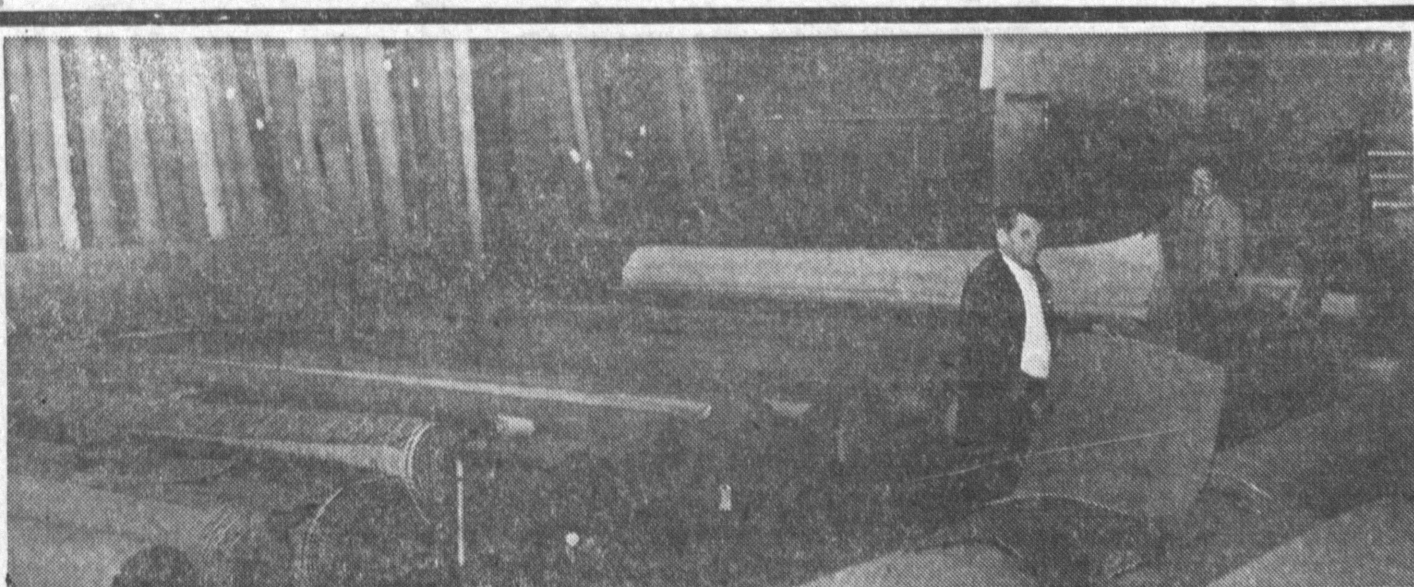
1308 SARTORI DOWNTOWN TORRANCE
ABOVE McMAHAN'S FURNITURE

NO MONEY Down 18 Months to Pay

FA 0-0707

FOR PRICES IN ADVANCE

DR. WHARTON



Broadloom Purchase

We made a fabulous purchase of 1000's of yards of fine quality broadlooms from the nation's leading mills. WOOLS—COTTONS—CHROMSPUNS—NYLONS. The savings are terrific—up to 50%—BUY NOW and save while selections are complete!

Wall to Wall Completely Installed

Your choice: Kolorios, Chromespun, Viscose, Candy Stripe, etc. Color locked in. Dirt locked out—beautiful decorator colors. In all the new tweeds and plains. Completely installed over 50-oz. waffle pad, tackless stripping and door metals.

CALL
TE 3-3505

\$ **3**⁹⁵
Square Yard

Never less than \$6.95 yd.

We Use 50-oz. Waffle Pad
With Our Installation

INSTALLED BY FACTORY TRAINED MEN!
ALL WORK FULLY GUARANTEED

<p style="text-align: center;">BROADLOOM</p> <p>Wide selection of tweeds or exquisite decorator colors.</p> <div style="display: flex; justify-content: space-between;"> <p>WAS \$4.95</p> <p style="font-size: 2em;">1⁸⁸</p> <p>Sq. Yd.</p> </div>	<p style="text-align: center;">100% WOOL PEBBLEWEAVE</p> <p>In all the new decorator colors. 12 and 15 ft. widths. A fabulous buy at a tiny price!</p> <div style="display: flex; justify-content: space-between;"> <p>WAS \$9.95</p> <p style="font-size: 2em;">3⁸⁸</p> <p>Sq. Yd.</p> </div>
<p style="text-align: center;">100% WOOL AXMINSTER</p> <p>18th Century florals, sunset tweed and solid colors. This is woven carpet. Do not confuse with cheap imitations.</p> <div style="display: flex; justify-content: space-between;"> <p>WAS \$7.95</p> <p style="font-size: 2em;">3⁸⁸</p> <p>Sq. Yd.</p> </div>	<p style="text-align: center;">ALL WOOL HI-LO WILTON</p> <p>All wool Wilton carpet in the most wanted shades. Thick 100% wool in a Hi-Lo weave.</p> <div style="display: flex; justify-content: space-between;"> <p>WAS \$12.95</p> <p style="font-size: 2em;">4⁸⁸</p> <p>Sq. Yd.</p> </div>

TRIDENT HOMES INC.

OFFERS . . .

an invitation
TO YOU . . .

THE OPENING OF A NEW OFFICE AND MODEL HOME AT
1500 N WILMINGTON BLVD.
OFFERING A COMPLETE RESIDENTIAL BUILDING SERVICE TO
OUR MANY FRIENDS AND CUSTOMERS IN THIS AREA

FEATURING

STAFFED WITH
TRAINED PERSONNEL
TO HANDLE YOUR
FINANCING AND BUILDING
PROBLEMS

TE 5-7228

Open 8 a. m. to 8 p. m.

- Free Estimates and Help with Your Planning
- Custom Building
- Rental Units
- Additions
- Club Rooms, Dens, Family Rooms
- On Your Lot Developments

100% FINANCING

MANY PLANS TO CHOOSE FROM

ANNOUNCING OUR NEW 1½-BATH, 2-BEDROOM SPECIAL

Trident Homes Is An Associate of Trident Construction, 1492 S. Hawthorne Blvd.

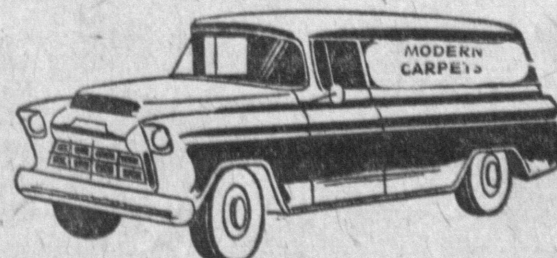
Modern Carpets

17th and Pacific • San Pedro

**17th and S. Pacific Ave.
SAN PEDRO**

Open Sunday 10 A.M. to 6 P.M.—Weekdays 9 to 9

No extra charge for cement floors
A phone call Brings Our Store to Your Door. Make a Carpet Choice at Home No Obligation



TE 3-3505