

"LOOKING 'EM OVER"

With Mike Callas Jr.

'Who's on Short'

Many years ago the comedy team of Bud Abbot and the late Lou Costello put an act together—the "who's on first" and "who's on second" act: remember it?

Well if you don't the Dodgers have revived it in 1960. However, their not going the all position route like the comics. What Alston and Bavasi are trying to figure is "Who's on Short?"

When spring training began in February in Vero Beach three shortstops showed up for duty—Don Zimmer, Maury Wills, and Bob Lillis. If you recall, last year about this time, writers were singing the abilities of Lillis and Zimmer was hollering "play me or trade me."

Little Don had but Lillis to contend with then. This year he must beat out Maury Wills as well. Wills distinguished himself in late season play in '59. In fact Maury played so well that .165 hitter Zimmer was benched most of the time, appearing only in extremely-needed pinch hit roles. That is only after Alston had exhausted his bench of right-handers.

What caused the collapse of the scrappy, hard working shortstop is hard to figure. Experts tried to snap him out of his slump. Hundreds of letters poured into Dodger offices with advice to Don from loyal Los Angeles fans. Nothing helped!

No Trade Talk Now

Still a comparative youngster, Zimmer, 29, is not talking trade like he did last year. He rather play with the World Champions but if his ability is not equal to that of Wills or Lillis, Don won't holler "trade me." According to reports from Vero Beach Zimmer will settle for the role of utility infielder. He's been with the Dodgers for 12 years now so why change as he puts it.

After talking with "Zim" while he warmed the bench in '59 I got the impression that the only thing wrong with him was that he was pressing to hard. He loves to play the game just as a youngster playing his first sandlot game of baseball. He wanted to get in there and get his licks and each time Alston waived him in he tried so hard to get a hit that he swung at balls usually reserved for the bowling and golfing set.

Zimmer won't be pressing this hard when the boys return to the Coliseum. His present attitude, if legitimate, will be the key to his return to form—the kind that led so many of us to believe him to be the successor to Pee Wee Reese in '58. Other ball players thrive on pressure but not Don. His one big hope for a good year is to go up to that plate and forget all about Wills and Lillis. A difficult task we admit but Zimmer is capable of this kind of approach to a situation.

Quiet and Serious

Don is generally considered a quiet but serious guy by the writers who cover the games. However, it is a known fact that he'll swear at the ump's after a close call as anyone else. Other items such as injuries upset him just as much. But basically Zimmer saves his words to inspire the infield about him when he's out there working the hot spot.

Not much of a social bug like Drysdale and Snider, Zimmer, nevertheless is liked and admired by baseball men as well as enthusiasts of the game.

He'll make it. I'm betting on it.

SCHOLASTIC Diamond Schedule

NORTH HIGH		League Season	
Date	Opponent	March 22	Aviation
March 8	Aviation	March 24	Chadwick
March 10	Lennox	March 29	Lennox
March 15	South High	March 31	Torrance
March 17	Torrance		
League Season		April 5	Culver City
March 22	Mira Costa	April 7	Beverly Hills
March 24	Morningside	April 19	El Segundo
March 29	Inglewood	April 21	Aviation
March 31	Hawthorne	April 26	Banning
		April 28	Lennox
April 5	Redondo		
April 7	Leuzinger	May 3	Torrance
April 19	Santa Monica	May 5	Culver City
April 21	Mira Costa	May 10	Beverly Hills
April 26	Morningside	May 12	El Segundo
April 28	Inglewood	May 20	CIF Playoffs begin
May 3	Hawthorne		
May 5	Redondo		
May 12	Santa Monica		

*Denotes away game.

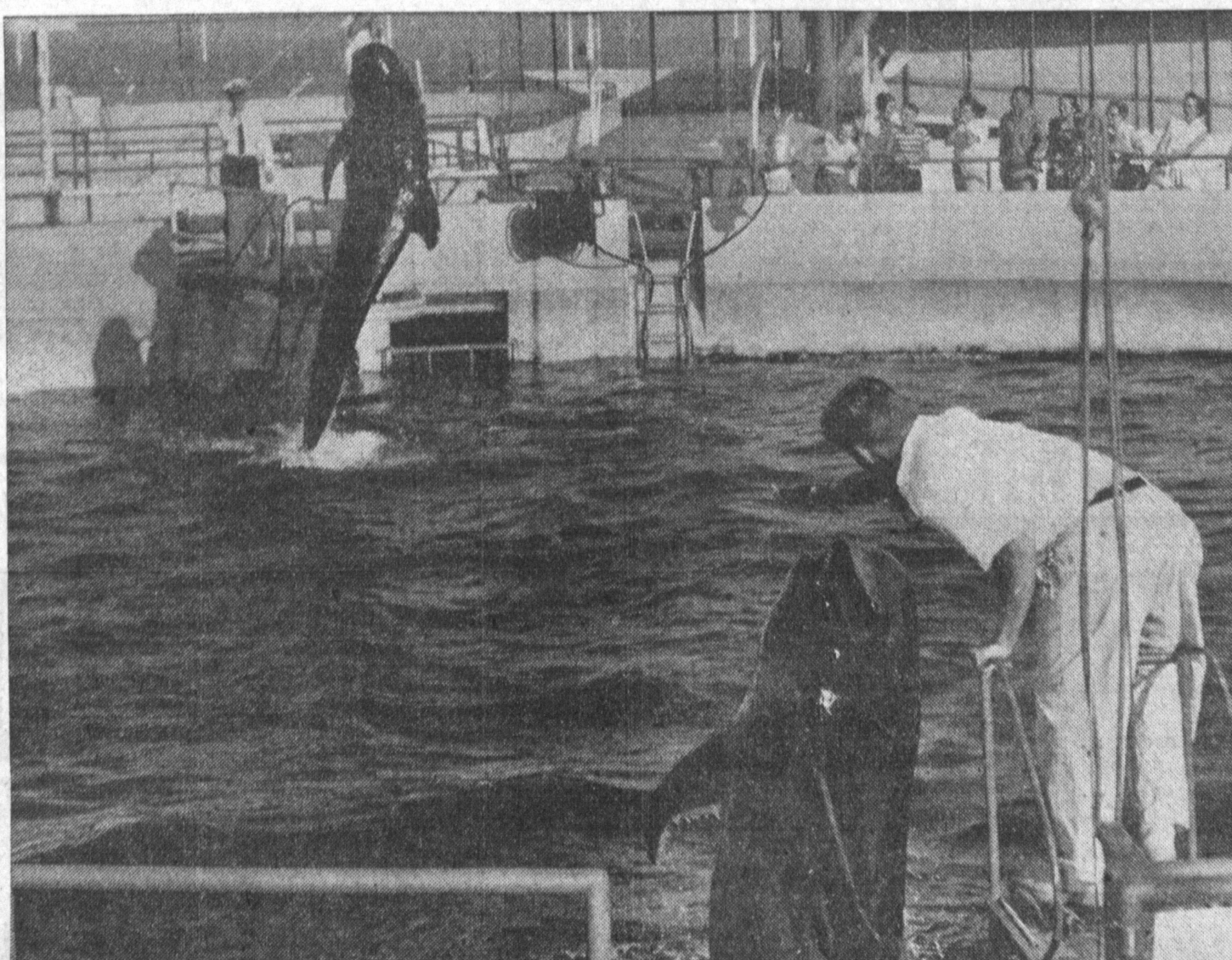
Torrance	
Date	Opponent
March 8	Mira Costa
March 9	Leuzinger
March 11	Centennial
March 15	Redondo
March 17	North
League Season	
March 22	Culver City
March 24	El Segundo
March 29	Beverly Hills
March 31	South
April 5	Bye
April 7	Lennox
April 11	Pomona Tourney
April 19	Aviation
April 21	Culver City
April 26	El Segundo
April 28	Beverly Hills
May 3	South
May 10	Lennox
May 17	Aviation

*Denotes away game.

Date	Opponent
March 4	North
March 8	Compton
March 11	Leuzinger
March 15	North
March 17	Mira Costa

Bowling News

Monday night's Men's Industrial Handicap loop round out the 17th encounter on Bowl-O-Drome's lanes with the Inwols and 1 Mo leading the pack with their 42 wins to six in the lost column. Clark's Cleaners ride in second only 2½ games behind the league leaders trailed one down by the Zing Bros. Auto quintet. Cliff's Shell share the third notch, followed by the American Plant Growers, John's Hair Shaping and Vel's Ford. D. Burnham, going through his paces for the Zing Bros. Auto mob, connected with the top slot on the individual season series honor roll, producing a whopping 670 and 42-712 three game set, as G. Marchese soared to the individual game high with his towering 256 and 11-267 pitch. Interstate aPint latched onto a big 10 game lead in Bowl-O-Drome's Monday night mixed, completing the 24th week of their winter session. L&N Laundromat rest in second, followed by Team No. 10, Charey's Upholstery, Team No. 11 and the Antique Tavern quintet.



SPORTY EXHIBITIONS, featuring Squirt, foreground, and Bubbles, the only trained whales in the world, are highlight of Marineland of the Pacific show. The almost-human monsters of the deep leap out of the water for their food.

1960 TORRANCE AREA

Baseball Directory

The baseball aggregation statistics listed below have been compiled by staffers of the PRESS to better acquaint readers with the make-up of Little PONY and Babe Ruth Leagues of the Greater Torrance Area. If your team is not listed write to Sports Editor, Torrance Press, 1406 Cravens Ave., with information.

LITTLE LEAGUE

Little League baseball is for boys born between July 31, 1952 and Aug. 1, 1947.

TORRANCE CENTRAL LITTLE LEAGUE

President—Russell Hayes (FR 8-1363).
Players Agent—Jim Wray (FA 8-0176).
Boundaries—Hawthorne Blvd. on the west; 190th St. on the north; Crenshaw Blvd. on the east; and Carson St. on the south.
Registration—Completed.
Tryouts—March 5 at 9 a.m. at Shindola Field, 182nd St. and Crenshaw Blvd.
League Dates—March 27 at 9 p.m. at Torrance American Legion Hall.
Opening Day—Undecided.
Location of Ballpark—Mobile Park, south of entrance at 3400 190th St. (northwest corner of General Petroleum refinery); Shindola Field (minor field), 182nd St. at Crenshaw Blvd.

LOMITA LITTLE LEAGUE

President—Tad Coggins (DA 6-2735).
Players Agent—Sam Johnson (west), FR 9-2577; John Miller (east), DA 4-8249.
Boundaries—Torrance city limits on the north; Walnut to the end of Ocean View Ave. on the east; end of Ocean Ave. to back of Pennsylvania Dr. on the south; Pennsylvania to Pacific Coast Hwy. on the south; Pacific Coast Hwy. to the west; Crenshaw to 241st St. on the west.
Registration—Completed (135 boys to date).
League Dates—Saturday, May 14.
Opening Day—Saturday, May 14.
Location of Ballpark—Chandler Field, Narbonne Ave. north of Palos Verdes Drive North.

NORTH TORRANCE LITTLE LEAGUE

President—Bob Simons (DA 9-1363).
Players Agent—Sam Johnson (west), FR 9-2577; John Miller (east), DA 4-8249.
Boundaries—Torrance city limits on the north; Pacific Coast Hwy. on the south; Pacific Coast Hwy. to the west; Crenshaw to 241st St. on the west.
Registration—Completed (135 boys to date).
League Dates—Saturday, May 14.
Opening Day—Saturday, May 14.
Location of Ballpark—Chandler Field, Narbonne Ave. north of Palos Verdes Drive North.

RIVIERA LITTLE LEAGUE

President—Jack Holmes (FR 8-3915).
Players Agent—Fran Andrews (FR 8-4956).
Boundaries—Pacific Coast Hwy. on the north; Torrance city limits on the south; Nancy Lee through the center of Via El Sereno on the east and the Pacific Ocean on the west.
General Meetings—March 3 at 3 p.m. at Parkway School.
Registration—March 12 from 9 to 12 noon at Parkway School.
Women's Auxiliary Meetings—March 15.
Tryouts—March 19, 26 and April 2 at lower Kissel Field.
Location of Ballpark—Lower Kissel Field, Pacific Coast Hwy., one half mile west of Hawthorne Blvd.

ROLLING HILLS LITTLE LEAGUE

President—Jack Palmer (FR 7-2522).
Players Agent—Jack Palmer (FR 7-2522).
Boundaries—Rolling Hills area, Rolling Hills area, Dapplegray area, Large Vista area; City of Rolling Hills, Strawberry Lane area, Westfield area.
Registration—Completed.
Tryouts—March 5, 6, 12 and 13 (pending breakdown of age groups).
Manager's Auction—March 15.
Start of Practice—March 27.
League Dates—April 23.
Opening Day—April 24.
Location of Ballpark—Rolling Hills Little League field, entrance off Rolling Hills road, north of Palos Verdes Drive North.

LITTLE LEAGUE (Cont.)

SOUTHWOOD LITTLE LEAGUE

President—Walter Virgil (FR 6-6048).
Players Agent—Paul Halbach (FR 4-5565).
Boundaries—Hawthorne Blvd. on the east; Sepulveda Blvd. on the south; Torrance city limits to Del Amo on the west; Del Amo to Hawthorne Blvd. on the north.
Tryouts—March 5 at Tibben Field, Victor and Del Amo St.
Location of Ballpark—To be developed at Emerald St. between Anza and Victor St.

TORRANCE AMERICAN LITTLE LEAGUE

President—Carl Blinford (FR 5-5159).
Players Agent—John Schnepf (FR 5-6653).
Boundaries—Redondo city limits on the west; Sepulveda Blvd. on the north; Madrona Ave. on the east; Pacific Coast Hwy. on the south.
Registration—Continued during first two tryouts.
Tryouts—March 5, 12 and 19 at 9 a.m. at Del Amo Field.
General Meetings—Wed., March 23 at 7:30 p.m. at Calle Mayor School to announce teams.
Opening Day—May 7.
Location of Ballpark—Del Amo Field, Plaza Del Amo, one block west of Western Ave.

TORRANCE NATIONAL LITTLE LEAGUE

President—George Cole (FA 8-5079).
Players Agent—Ralph Schaefer (FA 8-3300).
Boundaries—Carson St. on the north; Western Ave. on the east; southern Torrance city limits to Crenshaw to Sepulveda to Hawthorne to Carson on the south on the west.
Registration—Completed.
Tryouts—March 5 at 9:30 a.m. at Barrett Field, Oak St. and Jefferson St.
Opening Day—May 7, Saturday.
Location of Ballpark—Del Amo Field at Plaza Del Amo, one block west of Western Ave. and Barrett Field, one block southeast of Carson and Crenshaw.

PONY LEAGUE

Pony League is a baseball program for 13 and 14-year-old boys born between the dates Aug. 1, 1945 and July 31, 1948.

PACIFIC-RIVIERA PONY LEAGUE

President—John Minch (FR 8-2225).
Players Agent—Leo La Porte (FR 8-7973).
Boundaries—Starting at the ocean, Torrance city limits on the south to Torrance city limits on the east; North on Crenshaw to Lomita, west on Lomita to Hawthorne, south on Hawthorne to Pacific Coast Hwy., west on Pacific Coast Hwy. to Avenue 11 south to Camino del Campo and west to the ocean.
Registration—Throughout tryout date.
Tryouts—March 5.
Location of Ballpark—Kissel Field, 4000 Pacific Coast Hwy., just west of Fish Shanty.

NORTH TORRANCE PONY LEAGUE

President—Ronald Hiner (FR 4-5913).
Players Agent—Slim Wheeler (DA 4-0679).
Boundaries—Redondo Beach Blvd. on the north; Torrance city boundaries on the east; 190th St. and the south; Hawthorne Blvd. on the west.
Registration—Belief continued until tryouts at president and players agent's homes.
Activities—Rummage Sale, March 14; Dance, April 9; Mixed Yippee Party, April 29.
Tryouts—Completed.
Location of Ballpark—El Nido Park, Kingsdale Ave. near 182nd St. and Hawthorne Blvd.

PONY LEAGUE (Cont.)

ROLLING HILLS PONY LEAGUE

President—Milt Harrington (FR 5-4657).
Players Agent—Bob White (FR 4-8312).
Boundaries—Palos Verdes Estates school district.
Registration—13 and 14 year old boys can contact league president.
Location of Ballpark—Landfill No. 3 on west side of Crenshaw Blvd. between Palos Verdes Drive North and Rolling Hills Road.

WEST TORRANCE PONY LEAGUE

President—Bob Myers (FR 5-4757).
Players Agent—Bob White (FR 4-8312).
League boundaries—Redondo city limits of the west between Torrance Blvd. and Pacific Coast Hwy.; north boundary follow Torrance Blvd., Henrietta, Del Amo; east boundary follows Hawthorne Blvd., Sepulveda, Crenshaw, Lomita Blvd., Hawthorne to south boundary along Pacific Coast Hwy.
Registration—Evenings at the homes of O. A. Wells, 3433 229th Place; J. D. Johnston, 22021 Anza; R. S. Addington, 21704 Ocean Ave.; Richard Martin, 21726 Tallman St. (\$2 registration fee required).
Tryouts—Completed.
Get-Acquainted Dance—Saturday at 9 p.m. at Redondo Eagles Hall.
Location of Ballpark—Neotolating with Ryan Aircraft Co.

BABE RUTH LEAGUE

Babe Ruth League baseball is for 13, 14 and 15-year-old boys born since Sept. 1, 1944.

TORRANCE BABE RUTH LEAGUE

President—Bill Korchensky (FA 8-2111).
Players Agent—Foster Kelly (FA 8-2963).
Boundaries—Pending revision.
Registration—To be continued at date of tryouts (140 boys to date).
Tryouts—March 5 and 12 at 9 a.m. at the Torrance city park, Arlington and Santa Fe.
General Meetings—March 8 at Greenwood School.
Location of Ballpark—Plaza Del Amo, west of Western Ave. (Del Amo Field).

NORTH TORRANCE BABE RUTH

President—Richard Aspen (DA 9-2734).
Players Agent—Wes Fott (DA 3-5324).
Boundaries—City limits of Torrance north of 190th St.
Registration and Tryouts—Completed.
Opening Day—Tentatively May 14 or 15.
Location of Ballpark—Babe Ruth Ball Park at 177th St. and Gramercy Place.

PACIFIC AMERICAN BABE RUTH

President—Ralph Brodson (FR 8-1995).
Players Agent—Joe Burden (FR 8-0950).
Boundaries—Torrance city area south of Pacific Coast Hwy., bounded by Redondo city limits on the west, Sepulveda Blvd. on the north, Madrona Ave., Lomita Blvd. and Hawthorne Blvd. on the east, including Hollywood Riviera.
Registration—Through March 19 at home of Joe Burden (FR 8-0950) at the general meeting or during tryouts.
Tryouts—March 12, 19 and 19 at South High School.
General Meeting—Monday, Feb. 29 at 7 p.m. at Newton School, 23751 Nacy Lee Lane.
Location of Ballpark—South High School diamond.

PRESS Sports

ALL-LEAGUE CAGE SELECTIONS

1959-60

PIONEER LEAGUE

FIRST TEAM

Dave Mohs	Beverly Hills
JOE AUSTIN	SOUTH TORRANCE
Tom McPherson	Culver City
Dwight Jones	El Segundo
Alden Edwards	Aviation
BILL REINERT	TORRANCE

SECOND TEAM

Bob Einstein	Beverly Hills
Ron Dinnell	Aviation
Garry Smith	Culver City
Pat Brosnan	Culver City
BOB WEISTER	TORRANCE

Amble Cage Results

In this past week, Amble League play the Hollywood Riviera Sportsmen defeated the Christian Men 20-12, Torrance Recs defeated the Torrance Press 21-6, and the Redondo Hawks trounced the Sheriff's Men 20-5. In Thursday competition the Vagabonds 15, Post Office 19, Tappa Keggs 19, SB C of God 35, Old Pros 20, Calif Bank 10.

Games this week; Wednesday Redondo Hawks vs. Christian Men at 7, Recs. vs. Sheriff's Men at 8, and Hollywood Riviera Sportsmen vs. Torrance Press at 9 p.m. Thursday schedule; Calif Bank vs. Post Office, SB C of God vs. Old Pros and Vagabonds vs. Tappa Keggs.

Use classified Call FA 8-2345



Members of Torrance fire department total 82, working out of four stations.

Open Sunday FRED AND KEN BOATS Big Saturday and Sunday Sellathon

Doors Open at 9 A.M. — Shop Early

REGULAR \$14.95
STEERING WHEELS
Complete with Hub **5.95**

Coast Guard Approved
BOAT CUSHIONS Reg. 4.95 NOW **\$1.99**

Fiberglass
RESIN Reg. 8.95 Gal. NOW **\$4.99**

Plastic
BATTERY BOXES Reg. 12.95 NOW **\$4.95**

A Terrific Buy!
SKI BELTS Reg. 3.95 NOW **\$1.39**

C.G.A. Adult
LIFE JACKETS Reg. 6.95 NOW **\$2.99**

C.G.A. 2 1/2-lb. Fire
EXTINGUISHERS Reg. 18.95 NOW **\$14.95**

Reg. 14.95 Chrome
HARDWARE SET NOW **\$6.95**

Regular \$1495
15-Ft. Fiberglass
BOAT MOTOR AND TRAILER **\$1095**

All New 25-H.P. Electric Motor, Boat Seats Upholstered. Trailer with Winch, Lites and Tie-downs.

Reg. \$129 14' to 15'
BOAT TRAILERS NOW **\$89.50**

Reg. \$179 16' to 17'
BOAT TRAILERS NOW **\$119**

Good Selection
USED BOATS From **\$75**

Padded, Folding
BOAT SEATS Reg. 6.95 NOW **\$3.99**

Reg. 44.75, 18-Gal.
GAS TANKS NOW **\$29.95**

Reg. 34.95, 12-Gal.
GAS TANKS NOW **\$19.95**

FIBERGLASS 27" **29¢** 38" **49¢**

FRED & KEN'S

MONEY SAVING BOAT SALES

Authorized EVINRUDE Dealer

824 W. PACIFIC COAST HWY.

In Wilmington — Phone TE 4-2350

We Give Blue Chip Stamps

Reading public has a choice of 28,230 books in the public libraries of Torrance.

Department provides health services in Torrance.

DID YOU KNOW by Ken

ENOUGH PAINT WAS USED BY AUTO REPAIRMEN LAST YEAR TO PAINT THE QUEEN MARY 6000 TIMES!

Over six million gallons of auto lacquer and enamel were used to refinish damaged cars. Damage to your car can be costly, if you're not adequately insured. Ask your agent how little it costs to get top-notch protection with State Farm.

JACK SMITH
1715 CARRILLO, TORRANCE FAIRfax 8-3803

STATE FARM
INSURANCE

STATE FARM MUTUAL
AUTOMOBILE INSURANCE COMPANY

Home Office: Bloomington, Illinois

Use classified ads for quick results. Phone FA 8-2345.

Use classified ads for quick results. Phone FA 8-2345.

THE Gable House BOWL

Hawthorne and Sepulveda Blvds.

Will Be OPEN

BEFORE APRIL 1st

We're Looking Forward to Your League Reservations

Call Jerry Homel Now!

FR 8-2265