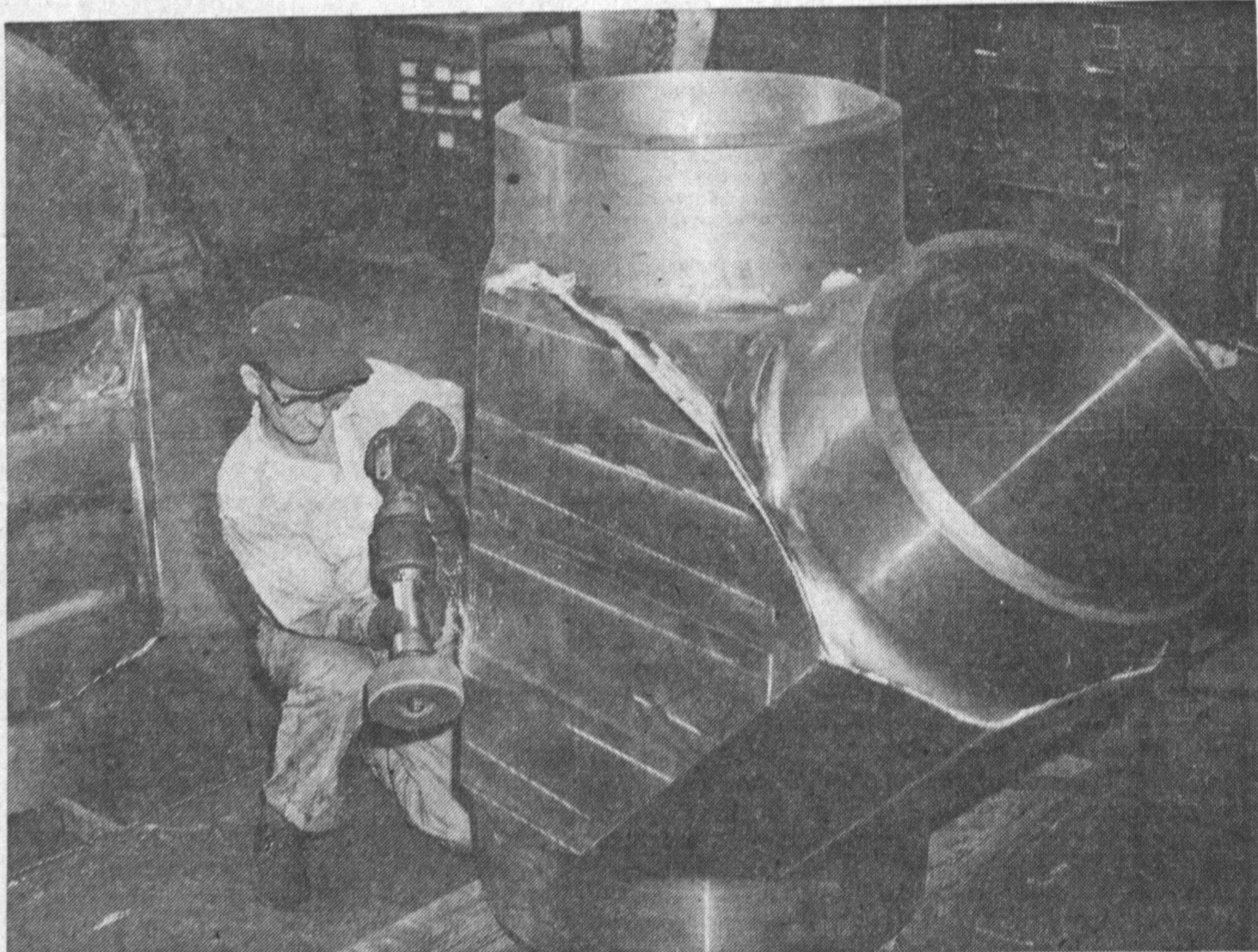


National Supply Co. Makes Big Jobs Easy



DAINTY FITTINGS—You can't buy these at the hardware store. Ken Fortney puts finishing touches on fittings for a

steam plant in National Supply Co. plant here. Each of the products weighs 6000 pounds, was specially produced.

Firm Largest Machinery Plant in West

Production of big equipment for other industries comes easy at the Torrance plant of The National Supply Company.

As the largest completely integrated machinery-manufacturing plant in the West, it is able to take on many jobs which are beyond the capacity of other plants.

Set up primarily to manufacture oil-field machinery and equipment, the plant also is geared to the manufacture of heavy machinery and maintenance and operating equipment for many basic industries, such as steel, aluminum, mining, and cement.

Other products include ordnance material and aircraft parts, as well as forging, castings, and machinery for a multitude of industrial uses.

Special jobs completed during the past year include stem and stern castings for a new ship of the U.S. Coast and Geodetic Survey, 14 propeller shafts for two new cargo vessels, the world's largest drill collar, some 6000-pound fittings for the piping in a steam plant, a 40,000-pound forged and machined sleeve, and two 55,000-pound stands for a rolling mill.

Some jobs are so big and unusual they require special preparations even at the National Supply plant. But the preparations are made and the jobs are handled speedily and safely.

Safety is a primary consideration of J. D. Spalding, works manager, and his staff. During 1959 the plant had a perfect safety record, working more than 1,400,000 manhours without a lost-time accident.

At the end of 1959 the plant had 713 clear days since its last lost-time accident, Jan. 17, 1958. Because of its outstanding performance, the plant will hold the "Big Iron Man," Armco Steel Corporation's principal safety trophy, during the second half of 1960.

Rigs and equipment made at National Supply's Torrance plant are used in drilling for oil and gas in virtually all parts of the world. The plant now manufactures the company's complete line of drilling rigs, including the smaller rigs, formerly built at Toledo, Ohio.

Established in 1912 by the Union Tool Co., as the first industry in Torrance, the plant became a part of The National Supply Company in 1920. It now occupies a 39-acre tract in the area extending from Border Ave. to Western Ave. and from Carson St. to 213th St.

The plant has 33 principal buildings, with more than 700,000 square feet of covered floor space. The plant's seven-inch spindle, horizontal boring, drilling, and milling machine is one of the largest machine tools of its kind on the Pacific Coast.

Other unusual machinery includes a trepanning lathe 124 feet long for work requiring high speed, deep hole, precision boring.



BIG IRON MAN—Torrance plant of National Supply Co. had perfect safety record in 1959, will display Armco trophy in second half of 1960. Iron Man, three feet tall, was created by Clement J. Barnhorn, internationally known sculptor, in 1926.

Retail Sales Go to \$8,806,000 Here Despite Recession That Hit in 1958

Despite the recession of 1958, Torrance's total retail sales increased \$8,806,000 over 1957 to reach an all-time high of \$74,487,000, the Chamber of Commerce reported in its monthly publication, "Torrance This Month."

The article was based on exclusive estimates of "Sales Management," the magazine of marketing. The story, written by Dick Fitzgerald, editor, and who also is manager of the chamber, continues:

"The tremendous increase of almost \$9,000,000 of retail sales, surpassed only the \$11,398,000 increase in 1956 was highlighted by its increase in food-store sales of \$28,750,000. "The really significant feature of Torrance's economic picture in 1958 was that all but one of the nine retail-store groups registered an increase in sales. "With a population estimated at 99,000 on Jan. 1, 1959, Torrance became the fifth largest city in the Los Angeles County, the 12th largest in California and the 142nd in the entire nation. (Gained four spots nationally). "The All-American City's population represents .0566 of the total population of the United States. Included in this total are 25,200 households and

30,800 consumer spending units (the number of households plus people living alone, who constitute individual spending units). "These figures are an increase of 16,000 households over 1957 figures and an increase of 1700 in the number of consumer-spending units."

Torrance is second in population in the Fourth Supervisorial District, according to Burton W. Chase, supervisor.

Figures for Torrance are 101,558, following Long Beach with 319,957. In third place is Santa Monica with 88,144 and then Compton with 70,178.

Torrance also is second in area with 19,891 square miles, topped by Long Beach, which has 45,739. Although fourth in population, Compton is ahead of Santa Monica in area with 8.15 against Santa Monica with 8.1.

City-wide celebrations held each year in Torrance are Rancho Days in July and Armed Forces Parade in May.

Hayden, Stone Offers Booklet

A free booklet "Twelve Attractive Low-Priced Stocks for 1960" is being offered by Hayden, Stone & Co., members of the New York Stock Exchange, the Pacific Coast Stock Exchange and other leading securities and commodities exchanges.

The booklet may be obtained free at any Hayden, Stone & Co. office or will be mailed postpaid, free of charge, to anyone requesting it from its branch at 19 Malaga Cove Plaza, Palos Verdes Estates.

Use classified Call FA 8-2345

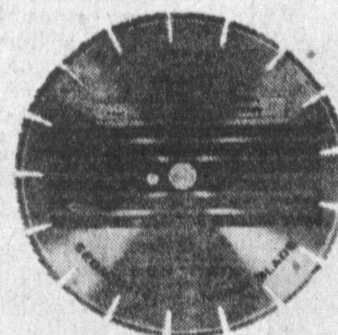


SAW AND DRILL CONCRETE?

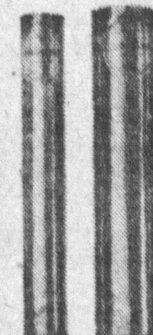
...it's done every day with
Felker DI-Met diamond abrasive tools!

Ever watch the laborious process of breaking out solid, fully hardened concrete? Ever notice the rough-edged, ugly scars when a patch was made? Ten years ago these damages were commonplace in all parts of the nation. But today you see them less and less because of Felker products, made in Torrance, California!

Here's how Felker cuts costs in the nation's tremendous construction program.



FELKER DI-LOCK DIAMOND ABRASIVE BLADES—Contractors no longer break out paving leaving rough, jagged unsightly edges. When a new pipe is laid or cut-outs made for planting trees such as was recently done in Torrance, concrete is first sawed! Removal then leaves smooth straight sides—easy to repair, unnoticeable to the eye. Felker DI-Lock diamond blades have made this operation possible and are a standard tool in the industry, nationwide.



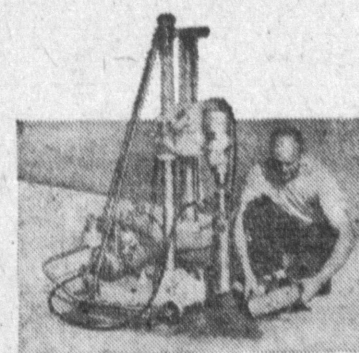
FELKER CORE-LOCK DIAMOND ABRASIVE CORE DRILLS—Any concrete, brick, or masonry wall, floor, slab or foundation can be easily drilled to exact diameter permitting neat, easy installation of new pipe lines, air ducts, drainage pipes, electrical conduits, guard rails, etc. The answer is in these specialized Felker Core-Lock diamond core drills. They slice through concrete and aggregate—even steel reinforcing bars, and leave round, true, smooth walled holes that exactly fit each pipe requirement.

FELKER DI-MET MACHINES

For use with Felker DI-Met diamond abrasive blades and drills, a whole new line of machines has been developed. Here are only a few:



Felker DI-Met Masonry Saws—for cutting stone, brick, block and other masonry building materials.



Felker DI-Met Core Drilling Machines—for producing holes in concrete, brick, or masonry walls, floors and ceilings; for producing core samples in any pour.



Felker DI-Met Concrete Cutting Machines—for sawing all paving materials—concrete or asphalt.

When you see Felker—you're looking at the leader in the diamond abrasive tool industry—a Torrance enterprise!



FELKER MANUFACTURING CO.

1128 Border Avenue • Torrance, California

Compare...

Southwood ESTATES

IN TORRANCE

where your neighbor has an investment equal to your own.

Immediate Possession!
NO PAYMENTS UNTIL
APRIL, 1960

LOWEST PRICES

from **\$19,975** from \$2200
down plus
imposts

LOWEST INTEREST ... New Interest Rates Lower than F.H.A.

LONGEST LOANS ... 25 year loans, also Cal-Vet loans.



Compare These Features . . .

**3 and 4 BEDROOMS,
FAMILY ROOM, 2 BATHS**

Genuine lath and plaster construction, select oak flooring, forced air heating, used brick or Palos Verdes stone fireplace, dream kitchen with built-in O'Keefe & Merritt gas range and oven, hood with exhaust fan, disposal, intercom system and built-in dishwasher may be included at time of purchase.

**A FEW HOMES NOW AVAILABLE
FOR IMMEDIATE OCCUPANCY**

Healthful, smog-free Torrance . . . close to Palos Verdes area . . . May Co., Broadway and Sears Shopping Centers are just minutes away.

SEE SOUTHWOOD ESTATES TODAY!



DON WILSON
the southland's most
reliable home builder

LEE HALISON—Sales Manager



GREAT
BUILDER
SERIES

POPULAR "VANGUARD" OPEN PATIO MODEL

From the intersection of Hawthorne and Torrance Blvd. drive west one mile on Torrance Blvd. to richly decorated models furnished by WARD-RICHARDS.

OPEN DAILY FROM 10 A.M.

