

Pvt. Emerson Takes Driver Course in Army

Army Pvt. John H. Emerson, 23, of 4903 Cadison St., completed a light-vehicle driver course at Fort Ord.

Emerson received eight weeks of training in automotive maintenance, driving military vehicles under various conditions, and defense of his vehicle during combat.

Emerson is a 1955 graduate of Narbonne High School, Lomita, and was employed by the Shell Oil Company in Wilmington, before entering the army.

Business Show Set This Month by Accountants

The Los Angeles Chapter of the National Association of Accountants has announced it will hold its 1966 Southern California Business Show at the Ambassador March 29-April 1.

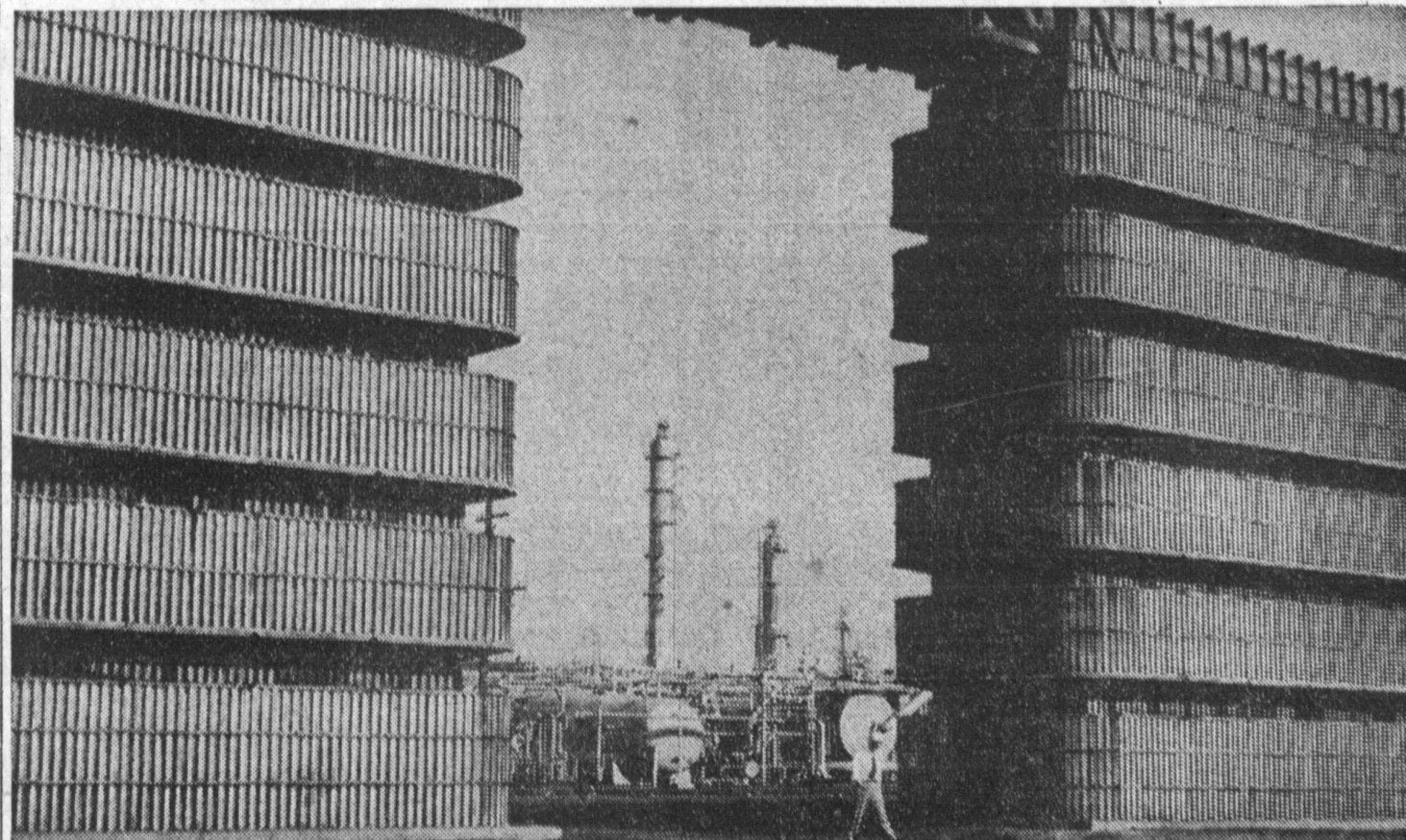
The show is designed to familiarize accountants, executives and administrative personnel with the most recent developments and applications of business machines and methods.

Leading manufacturers of office equipment will have a multi-million-dollar display of their latest models.

This event has been sponsored annually by NAA during the past 12 years. It is attended by several thousands persons.

Prudential Names Harold E. Evans

Harold E. Evans, 1659 W. 207 St., has been appointed agent for the South Bay district agency of the Prudential Insurance Co. He and his wife, Dorothy, who have lived in Torrance 16 years, have three children—Alan, 14, Linda, 13, and Stephen, 6.



SHELL PLANT—Columns of butadiene unit are visible between sections of water-cooling tower at Shell Chemical syn-

thetic-rubber plant here. Water circulates at 30,000 gallons a minute, used over and over. Cooler is one of largest.

Complete Building Service

SPECIALIZING IN INDUSTRIAL AND COMMERCIAL CONSTRUCTION

- PLANNING DESIGN AND ENGINEERING
- SITE DEVELOPMENT
- BRICK, BLOCK OR TILT-UP CONSTRUCTION
- STATE LICENSED AND BONDED
- LOWER COST PER SQ. FT. CONSISTENT WITH QUALITY CONSTRUCTION

HERE IS A PARTIAL LIST OF SATISFIED CUSTOMERS IN THE TORRANCE AND NEARBY COMMUNITIES....



E. A. "AL" BECKMAN

Developer-BUILDER with 18 Years' Building Experience in Southern California

Bay Electronics - Redondo Beach

Robert Levinson—Owner

Scotsman Trailer Headquarters - Gardena

Office and Plant—Jack Watts—Owner

Sears - Gardena

Substation—174th and Western

Armored Luggage Factory—Hawthorne

Jerry Knell—Owner

Guse's Trailer Manufacturing—Compton

August R. Coppens

El Capitan Sportswear—Los Angeles

John Abramo

Catalina Garment Factory—Los Angeles

H. Tringone—Owner

Lido Knitting Mills—Torrance

Joe Marcz—Owner

Torrance Press—Torrance

W. R. Zappas—Owner

Village Radio and Television—Manhattan Beach

Nick Potopoff—Owner

A.B.S. Sporting Goods—Redondo Beach

Al Bogan—Owner

Morgan Drug Store—Compton

Dr. Morgan—Owner

Svorny Clothes Factory—Los Angeles

Karel Svorny—Owner

E. A. 'AL' BECKMAN

CONTRACTOR

No Job Too Small or Too Large—Phone NEvada 6-2994 for Free Estimate

HELPING TO BUILD A BETTER TORRANCE

Court Handles Big Load with Same Personnel

Although the load for 1960-61 in the South Bay Judicial District, which includes Torrance Municipal Court, is expected to increase 11%, no additional employees will be necessary, according to Ernie Stout, chief clerk.

Improved operation procedures have resulted in retaining the present force of clerks. Drunk-driving cases, which have been the major traffic problem, have dropped. This improvement is attributed to the stern stand taken by the judges, Stout declared. He said:

"This drop has been shown through the country. The reason of course is the revocation of a driver's license upon a second conviction. There may be some reason for the first offense in that direction but not the second time. When a driver knows he will be without that automobile, he thinks before he imbibes too much."

The load for 1959 was 108,290, which included all violations such as parking, drunk driving, and moving.

Since 1953, there has been a 207% increase in cases. Personnel of Stout's staff numbers 22. His chief deputy is Phil Benjamin.

Three judges are assigned to the South Bay Judicial District, which comprises two courts, one at Redondo Beach and one at Torrance.

They are John A. Shidler, presiding, Donald A. Armstrong, and Otto B. Willett. Shidler and Willett attached to Redondo Beach and Armstrong is sitting at Torrance court.

The district embraces Manhattan Beach, Hermosa Beach, Gardena, Torrance, Palos Verdes, Rolling Hills, and Lawndale.

Four theaters are among the entertainment attractions in Torrance. There are inside houses with a seating capacity of 1600 and two drive-ins with an auto capacity of 2385.

Shell Chemical Co. Plant Here Assures Abundance of Best-Grade Synthetic Rubber

With development of polyisoprene by the Torrance plant of Shell Chemical Co., perhaps one of the biggest worries of the United States government is solved.

It always has been feared what would happen to Uncle Sam without natural rubber for tires that comes from South America. Now polyisoprene has removed that fear, particularly that it duplicates the qualities of the best-grade natural rubber.

It is not only another first for Torrance but assurance to Torrance as another solid industry that will give steady employment to residents working at the facility. As the capacity increases, demand for more help is inevitable.

Made by a chemically controlled process, polyisoprene is much more uniform in quality and of a higher purity than the average mixture of plantation rubber.

Besides tires, Shell's new product is used in manufacture of footwear, surgical gloves, skimming for conveyor belt plies, and other uses.

Development of Shell isoprene rubber is another step in the growth of Shell Chemical not only in Torrance, but throughout California and the United States.

Manufacturing operations of Shell Chemical first took place in 1930 at Martinez, Calif. The initial plant constructed by the company went on steam in 1931 at Pittsburg, the world's first facility to use natural gas as a source of hydrogen for production of ammonia. As the company expanded and new processes developed, plants were built at Dominguez in 1936; Houston, 1940; Denver, 1952; Ventura, 1953; and Norco, La., 1955.

Since 1955, Shell's Torrance plant has been established in the community. At that time, it was bought from the United States government. From these plants come a variety of products for

industry and agriculture.

From Torrance comes synthetic rubber and its major components, butadiene and styrene. Pittsburg and Ventura produce ammonia and a variety of fertilizers, while Denver, Houston and Norco produce insecticides and soil fumigants. From Martinez come solvents, industrial chemicals and antioxidants. Dominguez produces a wide variety of solvents. Houston and Norco also provide solvents, industrial chemicals, glycerine and resins.

Many of these products are chemical intermediates and building blocks other manufacturers turn into hundreds of items used every day. Shell Chemical products find their way into nylon, printing inks, paints and lacquers, plastics, gasoline, additives, brake fluids, soaps, adhesives, explosives, shoes and tires.

The annual production of synthetic rubber on the 273 acres of the Torrance plant is equal to the production of a 500,000-acre rubber plantation.

The plant includes butadiene, styrene and rubber-producing facilities. Extensive research and technical service laboratories also are situated at the plant.

More than 1350 persons are employed here.

Gas Stations Make Big Strides in Retail Sales

Second largest gain in retail sales during 1958 was made by Torrance's 40 gas stations, which did \$1,355,000 more business than they did in 1957, according to the Chamber of Commerce.

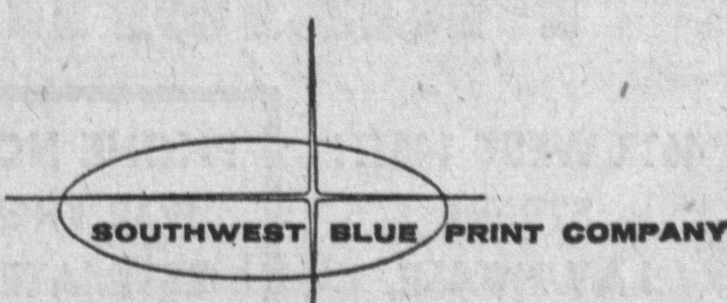
State ranking is 31.

In 1955, Torrance's state ranking was 58 with \$4,842,000; in 1956, the city dropped a notch to 59th despite the fact that sales took a hike to \$5,533,000.

CUSTOMER SATISFACTION

bluelines
offset printing
photo reproduction
engineering supplies
photostats
xerox

QUALITY SERVICE



FA 8-5800

1609 Border Ave., Torrance, Calif.