

GREEN HILLS

Child in Hospital

Nancy Lou Tibbet, 4, daughter of Mr. and Mrs. Reese C. Tibbet of 5107 Reese Road, Torrance, is a patient at Los Angeles Orthopaedic Hospital, it was announced today.

Hahn Says Harbor Hospital Delay Longer Than Work on Hoover Dam

Supervisor Kenneth Hahn this week told colleagues he visited Hoover dam last weekend and learned this project was built in four years, while the county has delayed almost four years in preparing plans for construction of Harbor General Hospital.

"The federal government has never been noted for speed in accomplishing major projects, yet Hoover dam, the tallest in the world and one of the largest and most difficult engineering feats, was built in four years."

"In November, 1956 the voters of Los Angeles County approved a bond issue of \$15,400,000 to build Harbor General Hospital—and the plans haven't yet been

submitted to the Board of Supervisors for advertising for bids," Hahn declared.

He said construction will take at least two years—making a total six from voter approval of the project until it is placed in operation.

County Defeats One-Court Plan

County Supervisors this week turned down a proposal for consolidation of Los Angeles County's 28 municipal-court districts and three justice-court districts into a single district. Municipal-court judges proposed the consolidation.



A LONG TALE—"Darby O'Gill and the Little People," Walt Disney's fantastic story of Ireland's leprechauns, comes alive on Radium Drive-in screens today and tomorrow. The film, with some of the greatest photo effects of the era, features gorgeous Janet Munro and Albert Sharpe in lead roles. Companion feature is "Ten Seconds to Hell," suspense thriller.

You don't have to wear glasses!

You can be free from "spectacles" and actually enjoy wider, clearer vision! Plastic contact lenses will improve your appearance and make your life happier. Only one-third of an inch in diameter and thinner than a finger nail, improved "contacts" are designed to be worn comfortably all your waking hours. They are not expensive; may save you money over a period of time. Terms will be gladly arranged. Come in for a no-obligation demonstration or mail the coupon. Open Friday evenings and all day Saturday. 32 years in Harbor Area. Offices in Long Beach and Wilmington.

DR. J. M. SOSS
Optometrist

1268 Sartori Ave.

FA 8-6602

MAIL COUPON

Please mail me illustrated literature on the new plastic contact lenses. It is understood that I will not be obligated.

NAME _____
ADDRESS _____
CITY _____ ZONE _____ STATE _____



**UMM...GOOD!
VALUES &
STAMPS TOO
AT FOOD GIANT!**

All the good things your family needs are at your nearby Food Giant... And you get the Blue Chip Stamps, too!

3 GREAT SALE DAYS

Mon., Tues., Wed., Feb. 29, Mar. 1, 2

Limit Rights Reserved

**LIBBY • Frozen
Turkey, Beef, Or
CHICKEN
PIES**

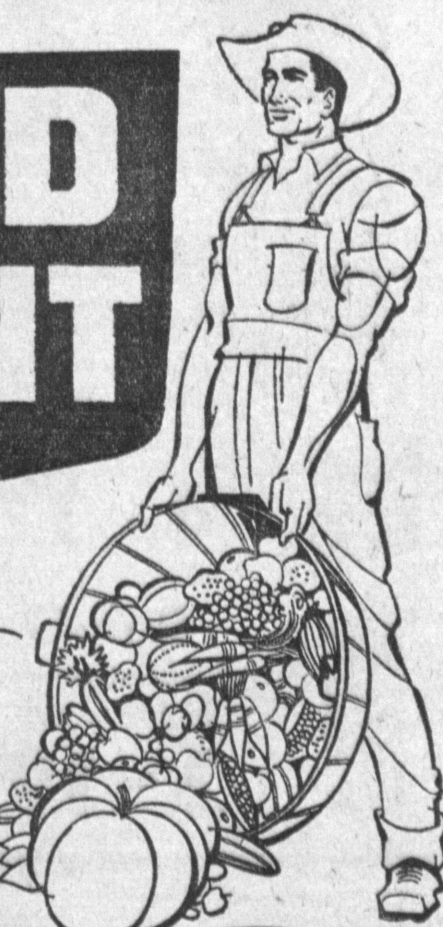
5 Reg. 8-oz. Pies

**BETTY
CROCKER'S
Bisquick**

29 Biscuits in an Instant • Large 40-oz. Pkg.

**DOUBLE LUCK • Cut
GREEN
BEANS**

10 Tall 303 Can



**We Give
BLUE
CHIP
STAMPS**

**LIBBY • From Red, Ripe California
TOMATO JUICE**

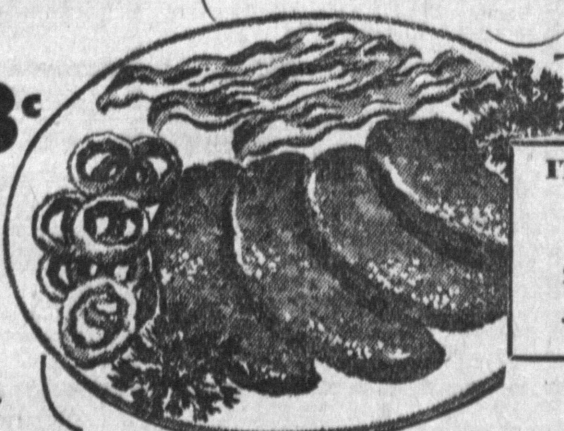
23 Jumbo 46-oz. Can

**Pasteurized Process
ARDEN'S
CHEESE
LOAF**

65 2-lb. Loaf

**3-BEE
PURE
HONEY**

89 5-lb. Can



**IT'S NEW
• Skinless
and
Sliced to
Uniform
Thickness**

**SLICED
BEEF
LIVER**

59 1-lb.

The best you've ever eaten. Sliced to uniform thickness, full of nutrients. This is the first time liver has been offered both skinless and in slices of uniform thickness for even cooking.

**TOP QUALITY • Northern
HALIBUT STEAKS**
You'll want to fill your freezer with this Lenten treat! **55**

Fillet Rockfish 49

Serve This New Product With **EASTERN • 1st Quality
SLICED BACON** **49**

Stir-fry, crisp and delicious, there's nothing quite so good as crisp bacon with breakfast to start the day off! 1-lb. Pkg.

**HUNT'S • Sparkling Favorite
FRUIT COCKTAIL** Tall 300 Can **19**

**HUNT'S • Zesty Flavor for Leftovers
Tomato Paste** 3 8-oz. Cans **23**

**FOOD GIANT • Fresh 'n Lean
GROUND
BEEF**

39 1-lb.

**FRESH FROZEN
BROOK TROUT**

From icy cold Northern waters! Frozen immediately to preserve its freshness! 2 to the pound. **49** 1-lb.

**ALASKA • FROZEN • BREADED
Veal Cutlets 5** 3 1/2-oz. Cutlets **1**

**WINESAP
APPLES**

25 2 lbs.

Crisp and crunchy... perfect luncheon fare! Keep plenty on hand for after-school snacks.

**FRESH and CRISPY
BROWN
ONIONS**

5 1-lb.

FOOD GIANT'S • All Purpose

LIQUID BLEACH 1/2-gal. Bottle **25**



UNOX • Imported from Holland

Canned Ham 2 1-lb. Can **1.98**

**SCOTKINS
Dinner
NAPKINS**
30-Ct. Pkg. **27**

**RATH • Frozen
CHOPETTES**
Beef, Pork
8-oz. Pkg. **49**

**SOFT WEVE
TOILET TISSUE**
2 Rolls **29**

**SCOTTIES • Pink
FACIAL TISSUE**
400-Ct. Box **29**

**M.J.B. • Instant
COFFEE**
6-oz. Jar **99** 10-oz. Off Label **10**

**PACQUIN
HAND CREAM**
Reg. Jar **59**

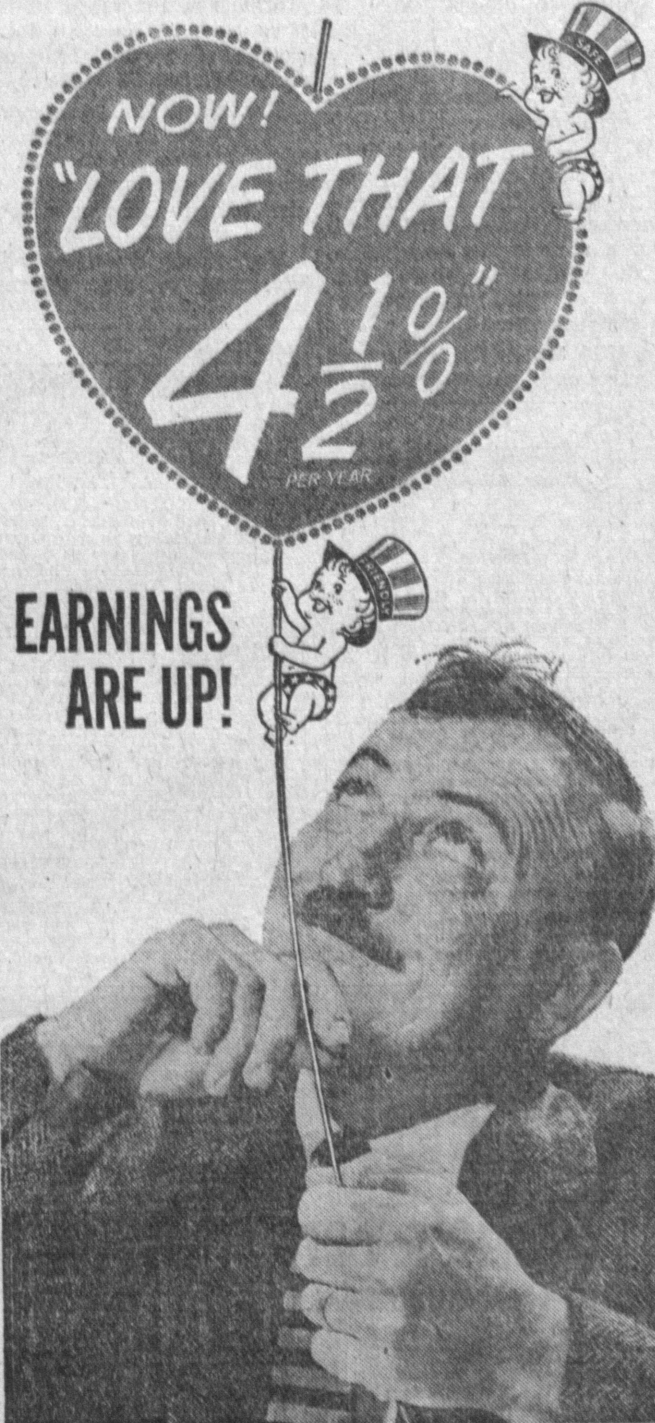
**SCOTT • Pink
PAPER TOWELS**
2 150-Ct. Rolls **41**

**CUT-RITE
WAXED PAPER**
125-Ft. Roll **27**

**COUNTRY KITCHEN
IMITATION
MAPLE SYRUP**
24-oz. Btl. **47**



In Gardena 14990 S. Crenshaw Blvd. at Compton
In Hawthorne 423 S. Hawthorne Blvd. at 132nd
In Inglewood 11202 S. Crenshaw Blvd. At Imperial
In Los Angeles 11208 S. Western Ave. at Imperial
In Manhattan Beach 2400 Sepulveda Blvd. at Marine
In North Torrance 4848 W. 190th St. at Anza
In Torrance 3731 Pacific Coast Hwy. at Hawthorne
In San Pedro 28849 S. Western Avenue



**EARNINGS
ARE UP!**

You'll love our new higher rate of 4 1/2% a year*... paid 4 times a year when you open a savings account at...

**GLENDALE
FEDERAL
SAVINGS**

AND LOAN ASSOCIATION
"Home of the Thrift Twins"

A \$300 Million Savings Institution
Each Account Insured to \$10,000

SAN PEDRO OFFICE
856 West Ninth Street
Terminal 2-5321

LIMITA OFFICE
2253 Lomita Blvd.
Davenport 6-6143

Other Offices In:
GLENDALE, STUDIO CITY, ARCADIA
MONTROSE, PACIFIC PALISADES
WESTWOOD VILLAGE, EL MONTE