



REV. MEL DIBBLE

Former TV Star to Hold Crusade at First Baptist

The Rev. Mel Dibble, former television star will conduct a week of evangelistic meetings starting Sunday in the First Baptist Church, 2118 W. Carson St., according to the Rev. Morgan Gates, pastor.

Prior to 1953, Mel Dibble was with NBC in Cincinnati. Five years ago he had a conference with Billy Graham and decided to become a fulltime evangelist. During the Billy Graham New York Crusade in 1957 he was associate evangelist.

John and Bobbie Laddgraf will lead Crusade Choir. Both are graduates of Wheaton College and will work directly with the young people.

Mrs. George Dibble, Mel's mother will hold 10 a.m. services Monday through Friday.

The Sunday meetings are at 9:15 and 10:45 a.m. and will conclude March 6 at 7:30 p.m. Meetings also will be held each night at 7:30 including Saturday.

Bowling News

Bowl-O-Drome's popular Wednesday Night Mixed heads into the last round of their winter bout with Baer's Draperies hanging onto a slim one game edge over Chandler's Sand and Gravel in the A' Division. Rossman Lumber trails in third, four back of the league leaders, followed by X-Ello Ede Co., Blue Diamond Mkt. and the Otulaws. oje Cucci, going the route with the Kott and Smolar quintet, leads in the race for the men's individual season series honors with his power-packed 610 and 54-664 set, while Rancher's Corners Connie Montgomery, and her impressive 601 and 57-658 three game effort heads the list of female kegling addicts. Bob Good, league leading member, soared to a towering 277 and 6-283 single, claiming the top notch for the season's individual high game for the men, as C. Taylor, representing the Balls-O-Fire, cut loose with a sizzling 241 and 34-275 pitch for the gal's season solo high.

Avalon Builders Supply continue to widen the gap between them and the rest of the pack in the "B" Division. Now enjoying a 6½ game lead over the second spot Hamaturs, Torrance Electronics rides in third, only one half game out of second, followed one half game down by South Bay Humane Society. Frontier Realty hurler M. Belt uncorked the men's individual season series topped, chalking up a powerful 615 and 54-669 on the scoreboard, as D. Loveridge produced the female high with her blistering 550 and 99-659 package. High game limelight was topped by C. Crawford and his whopping 287 and 21-278, going under the Frontier Realty banner, as L. Gilmore, rolling with the leading Avalon Builders Supply, racked up the female high, connecting with a tremendous 233 and 36-269.

Monday night's Harvey National loop completed the 22nd week of locking horns, with the Mixed Fives out in front by a big 8½ games. Pennoakes rest in second, trailed 1½ down by the Odd Balls. Head Hunters ride in fourth, followed by the Tigers. Going Five, an the Otulaws. G. Lange whipped up an impressive 606 and 117-723 to top the men's individual season series honors as F. Foster, with the Head Hunters, scored 465 and 180-645 taking over the female high. League leading member B. Pooler tossed out a tremendous 238 and 31-269 single pitch to claim the men's game high, while Peanuts kegler, came up with a 168 and 50-247 pitch to be listed at the head of the gal's column for the season's solo award.

GAS COMPANY AIDE HEADS CHEST EVENT

Jim Becker, Torrance manager, Southern California Gas Co., has been appointed chairman of the annual Harbor area Community Chest awards and installation dinner meeting by Glenn Koger, Harbor area board chairman.

The dinner, scheduled March 24, will honor Chest volunteers and contributors and will include installation of new board members and officers.

100 Car Derby at Ascot

Something new comes to the Ascot Stadium, Sunday afternoon, when for the first time, a 100 car Destruction Derby will be presented at the South Los Angeles stadium.

The Destruction Derby which drew capacity crowds all summer long last year at the Gar-

dena Stadium, will make a one-time appearance at Ascot where there will be much more room for cars to maneuver and crash.

Also added to the seven event program which gets under way at 2:30 sharp, will be the fact that all cars must make one lap around the three-quarter mile

road course, over a one story high jump, 100 ft. long, and through a slithering mud bath, just to make the days program more interesting.

Leading drivers already entered include: last year's champion, Howard Walton, of Hawthorne; Walton has entered four cars,

so that he can participate in every event.

Rough competition will come from such favorites as, Roger Hazzer, Wilmington; Al Cooper, Paramount; Dite Wall, Los Angeles; Jerry Dodds, El Monte; Jack Potter, Gardena; Lamarr Anderson, Manhattan Beach; Frank

Rose, Long Beach; Arley Scranton, Compton; Jack Blevens, Wilmington; Tom Nobel, Long Beach; Ray Malatta, Garden Grove; Lowell White, Santa Monica; Don Blevens, Wilmington; and Jim Bartosh, Los Angeles. Women drivers will also drive in event for Ladies Only.

Austin Featured in CJA Racing

Jack Austin, Downey will be driving a new car in Sunday's CJA Hot Rod races at the Gardena Stadium, and is favored to triumph in the days thirty lap feature.

Austin, winner of three main events, already this season, will be after number four, Sunday. His new mount, is a Ford coupe, as he has discarded his older ride, a sedan.

Austin will face up against top competition in the form of Bob Hogle, and Ed Van Eyk. Hogle from Buena Park will be driving one of his final races in the Hot Rods before going into the Sprint Car field.

Van Eyk, was the 1959 CJA Champion, but has gone with no wins this year. He is currently second in CJA points due to his constant high finishes in races. Van Eyk, hails from Bellflower.

LEONARDS
"One Stop" Shopping Center
COMPLETE DEPARTMENT STORE
600 N. SEPULVEDA • EL SEGUNDO
3 BLOCKS SOUTH OF INTERNATIONAL AIRPORT

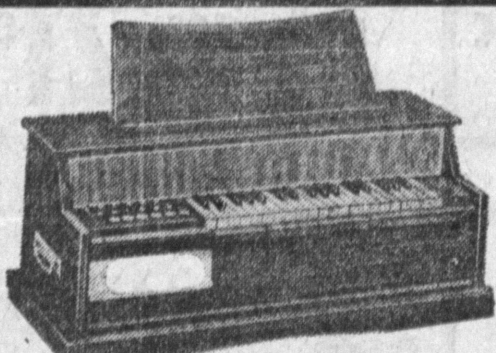
OPEN...
Mon. to Fri. 11:30 to 9:30
Saturdays 9 to 6 P.M.
Sunday 11 to 6 P.M.



Men's CLASSIC LOAFER
Brown or black smooth leather. Made by one of the leading manufacturers of casual footwear. Sizes 6 to 12. Regular \$6.99

\$4.88

(Shoe Dept.)



CHORD ORGAN
Anyone can play on sight. Free music books included. Regular \$149.95.

\$89.95

(Piano and Organ Dept.)



ZIG-ZAG SEWING MACHINE

Saws on buttons, buttonholes, blind stitches, monograms, embroiders. No attachments needed. Regular \$199.95.

\$56.40

(Sewing Machine Dept.)



VODKA 80 Proof

Reg. \$3.98

Grain distilled

\$2.89

GIN Grained Distilled

80 proof

Reg. \$3.98

\$2.89

(Liquor Dept.)

Everyday Special!
CARTON of CIGARETTES
ALL POPULAR BRANDS
Reg. Size **\$1.99** per CARTON

ACRES FREE PARKING

WOW! 6 BOTTLE PACK COCA-COLA FREE!

Yes, you get one carton of Coke FREE with the purchase of 1 carton of 'L&M' Cigarettes. Limit 2 to a customer (Housewares Dept.)



Men's and Ladies' Fully Guaranteed Precision Jeweled WATCHES

Not ordinary non-jeweled "pin lever" watches... but genuine, precision-jeweled beauties, that are water-resistant, anti-magnetic, shockproof, dustproof! Each has a lifetime guaranteed mainspring, too!

Compare at \$19.95 YOUR CHOICE

\$10.10

(Jewelry Dept.)

STADIUM JACKET

A sturdy 21 oz. all wool melton coat with half shawl collar and cuffs. Fully lined. Slash pockets and padded shoulders. In charcoal. Sizes 36 to 46.

Elsewhere \$11.95 **\$8.99**



WORK SHIRTS

Flap pockets, med. or long length sleeves. Sizes 14 to 17. Reg. \$3.39

\$2.44

WORK PANTS

Wide tunnel loops. Heavy pockets. Waist sizes 28 to 42. Are cuffed. Reg. \$3.98

\$2.99

(Men's Wear Dept.)

PRIMROSE PLANTS

Now in full bloom. Available in a variety of rich colors. Qt. size con.



3 for 88¢

MYSTERY GARDENIA

Bloom in fall. Evergreen shrub. Large white flowers. Grows in sun or partial shade. Very fragrant.

69¢

(Garden & Pet Dept.)



5-Play Swing Set

Hours of Fun for Children

Reg. \$26.95 **\$17.95**

(Sporting Goods Dept.)

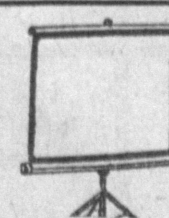


Throw Pillows

14 decorative colors. Knife edge styled. Washable.

79¢ ea.

(Linen Dept.)

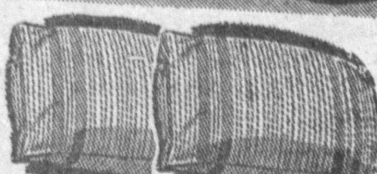


Slide Screens

Beaded and the new Lenticular. Sizes 30x40-50x50 and larger.

88¢ to 3850

(Camera Dept.)



2 BED PILLOWS

Non-allergic, acrilan filled. Large sized. Completely washable and dustproof. A real value... you can't afford to miss out!

Regular \$6.98 Pair

\$4.26

(Linen Dept.)



4-Pc. TV TRAY SET

Complete with holder stand. All metal in your choice of several beautiful colors and patterns.

Regular \$7.95

\$4.59

(Housewares Dept.)

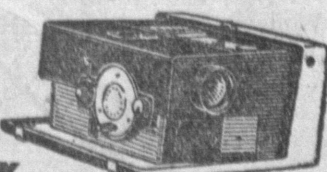


FISHING TACKLE

The most complete assortment of fishing tackle in the entire area. All known brand names—Robby-Harnell, Sila-Flex, Pen Reels and many more... EVERYTHING!

SAVE UP TO 50%

(Sporting Goods Dept.)



KODAK 'Cavalade' PROJECTORS

Finest, most versatile automatics ever made. Simply set the timing dial and the projector does the rest. Regular \$159.50

\$118.88

(Camera Dept.)

Everyday Special!
KODACHROME FILM
35 MM... Reg. \$2.45 **\$1.36** per roll
8 MM... Reg. \$2.85 **\$1.88** per roll
PROCESSING \$1.40 per roll

LEONARDS

600 N. SEPULVEDA BLVD. EL SEGUNDO CA 2-2135 OR 8-4762

Long Easy Budget Terms — 3 Blocks So. of International Airport