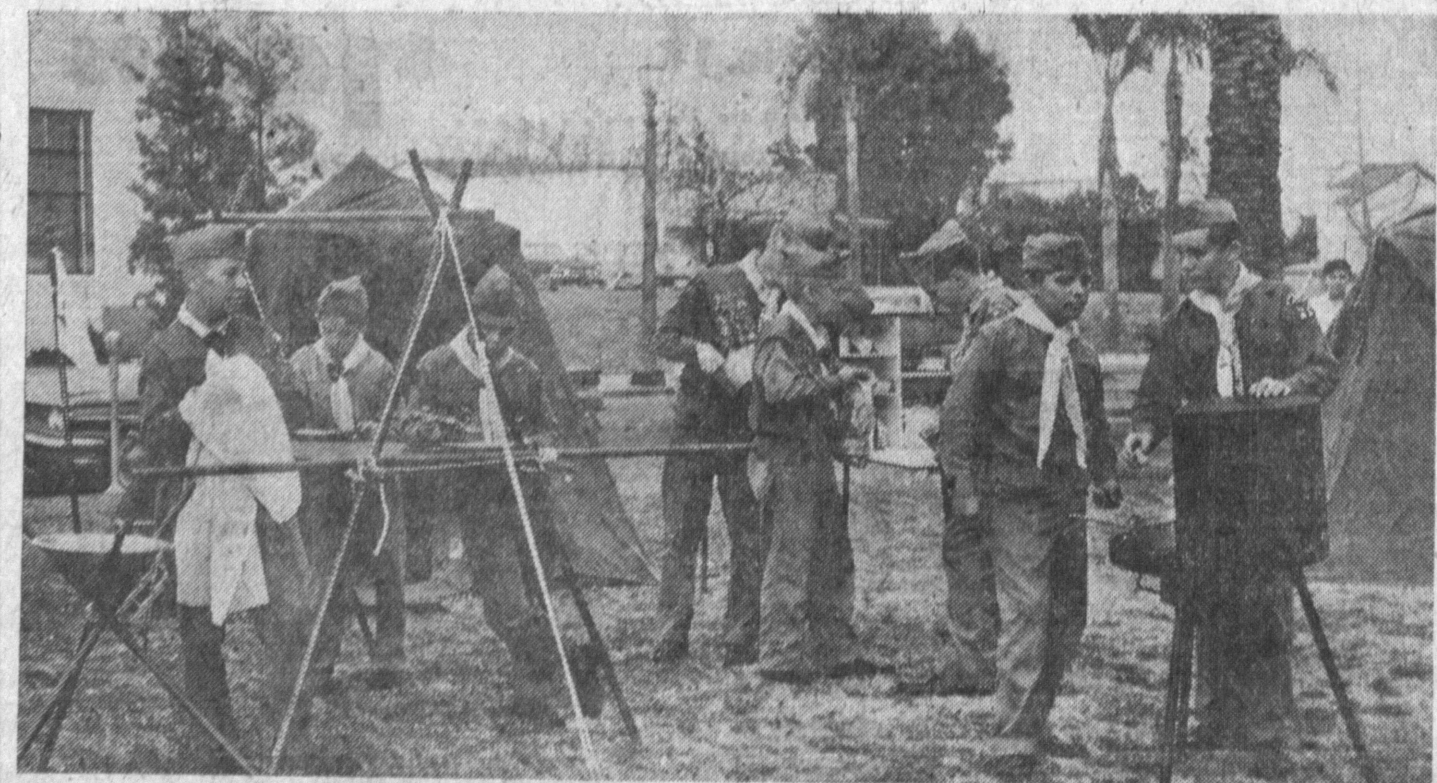




INDUSTRY, JUNIOR GRADE—Scout Week is under way throughout Torrance, and observing it are George Schindler, Cubmaster, and sons Dale and George III of 22324 Ladeene

Ave. Boys, members of Pack 966-C, are working on Pinewood Derby Kit, Cub father-sons project. Little cars will compete in derby at March meeting in Meadow Park School cafeteria.



CAMPOUT—Boys touched off Scout Week in downtown Torrance last weekend with two-day campout. From left: Gary

Wilkinson, Jerry Olsen, Danny Dane, Ken Shattuck, Norman Casson, Danny Rickard, Danny Reyes, Bobby Sullivan.



# PONTIAC PERFORMANCE ON REGULAR GAS!

Tempest 425E is Pontiac's lusty, high-spirited economy V8 that prefers regular gas. (It's optional at no extra cost on all series: Catalina, Ventura, Star Chief, Bonneville.) You save the difference between the price of regular and premium—about a dollar a tankful—but you get the kind of performance you expect from premium gas.



*Pontiac—the only car with Wide-Track Wheels!*

SEE YOUR LOCAL AUTHORIZED PONTIAC DEALER . . . WHO ALSO SELLS GOODWILL USED CARS WITH MORE BARGAIN MILES PER DOLLAR

**BOB BEAVER PONTIAC**

931 PACIFIC COAST HIGHWAY, HERMOSA BEACH, CALIF. — FR 4-3443

## Torrance Car Club Collects Funds for March of Dimes



COLLECTORS—Members of Torrance car clubs check in with Clara Conners, postmaster, after rounding up more than \$500 for March of Dimes. From left: David Pace, president of the Villains; Gary Shigley,

Charioteers president; Dick Kreutel, president of the Cardinals; Dick Marion, president, Car Club Association of Torrance; and Frank Peterson, president of Tyrants. Boys volunteered to speed collections Monday.

## County, State O.K. Agreement on Avalon Bridge

Supervisor Burton W. Chace disclosed today that a satisfactory agreement has been reached between the County Flood Control District and the State Division of Highways for design and construction of a bridge along the realignment of Avalon Blvd. at the Dominguez Channel.

Terms agreed upon provide that the State will pay for the relocation of Avalon Blvd. south of Dominguez Channel and acquire all lands necessary for the relocation of the highway facilities outside the Flood Control District right of way, Chace reported.

At the same time, Flood Control will deposit \$416,000, estimated cost of the bridge construction and the approaches north of the channel, with the State. Cost of the channel excavation is also included in this figure.

When the project is completed, Chace said, the Flood Control District will pay the actual design and construction costs of the bridge and highway facilities north of Dominguez Channel.

The agreement with the State was arrived at by M. E. Salisbury, chief engineer of the District, and state officials.

Use Press classified ads to buy, rent or sell. Phone FA 8-2345.

## Texaco to Build Refinery Quarters

Construction of a two-story central office building will begin soon at Texaco's 60,000-barrel-a-day Wilmington refinery, it was announced today by W. B. Logan, manager of the company's Pacific Coast refining division.

The structure will house the offices of Texaco's refinery, pipe-line department, and sales personnel.

Use Press classified ads to buy, rent or sell. Phone FA 8-2345.

NOW IS THE TIME TO INVEST IN REAL ESTATE.



Torrance Builders and Realtors Since 1936

### OUR LOSS! YOUR GAIN! ... WE'RE QUITTING BUSINESS

Entire Stock Sacrificed . . . Regardless of Cost!

2-Pc. Living Room Sets . . . **87<sup>00</sup>**

Mattress and Box Spring . . . **44<sup>00</sup>**

2 and 4-Pc. Bedroom Sets **58<sup>00</sup>**

Rollaways With Mattress . . . **17<sup>00</sup>**

USED ELEC. REFRIGERATORS AND GAS RANGES AT AMAZING LOW PRICES

NEW BUNK BEDS At a Fraction of Our Cost

EASY TERMS—FREE DELIVERY

Open Daily 'Til 9 p.m. Sundays 10-5 P.M.



126 N. PACIFIC AVE., REDONDO BEACH

Plus Many More Items Come Early! We Must Move Everything Price No Object

TENDER BEEF LIVER **49<sup>c</sup>**

Small Bone SPARE RIBS **39<sup>lb</sup>**

Pin Bone POT ROAST **59<sup>lb</sup>**

Choice RUMP ROAST **69<sup>lb</sup>**

Fresh Daily GROUND MEAT

GROUND BEEF **35<sup>lb</sup>**  
PORK SAUSAGE **35<sup>lb</sup>**  
GROUND ROUND **59<sup>lb</sup>**  
GROUND SIRLOIN **69<sup>lb</sup>**

BONELESS BEEF STEW **69<sup>lb</sup>**

CAPONETTE FRYING — ROASTING CHICKENS **35<sup>lb</sup>**

Choice STEAKS

SWISS STEAK **69<sup>lb</sup>**  
RIB STEAK **69<sup>lb</sup>**  
ROUND STEAK **69<sup>lb</sup>**  
CLUB STEAK **79<sup>lb</sup>**  
T-BONE STEAK **89<sup>lb</sup>**  
PORTERHOUSE STEAK **\$1.05<sup>lb</sup>**  
TOP SIRLOIN **\$1.17<sup>lb</sup>**

SLICED FREE All Meat BOLOGNA **39<sup>lb</sup>**  
Smoked LIVER SAUSAGE **39<sup>lb</sup>**  
Smoked HAM LOAF **49<sup>lb</sup>**

SALT PORK Lean **25<sup>c</sup>** LAMB CHOPS **49<sup>lb</sup>**

Center Slices Ham **79<sup>lb</sup>**

Hoffman's — SLICED FREE! Slab Bacon **49<sup>lb</sup>**

TASTY PORK CHOPS

Blade Cuts **35<sup>lb</sup>**  
Center Cuts **59<sup>lb</sup>**  
Tenderloin Cut **69<sup>lb</sup>**

**ARCHIE'S** 1617 CABRILLO AVENUE DOWNTOWN TORRANCE