

YOUR GUIDE TO

1960 OLYMPIC WINTER GAMES

Squaw Valley, Lake Tahoe, Calif.
Feb. 18-28

SCHEDULE OF EVENTS

THURSDAY, FEBRUARY 18

Afternoon
Opening Ceremony, Ice Arena and
Speed Skating Oval
Ski Jumping, Papoose Peak (exhibition)

PRACTICE SESSIONS
Ladies' and men's figure skating, West
Rink and Ice Arena
Men's downhill skiing, Squaw Peak
Ladies' and men's speed skating
Ladies' downhill skiing, KT22 Mountain

FRIDAY, FEBRUARY 19

Morning
Men's 30-km. cross-country skiing, McKinney Creek
Men's downhill skiing, Squaw Peak
Pairs' figure skating, Ice Arena

Afternoon
Ice hockey game, East Rink
Ice hockey game, East Rink
Ice hockey game, Ice Arena

PRACTICE SESSIONS
Ladies' and men's figure skating, West
Rink and Ice Arena
Ice hockey, East Rink
Men's giant slalom skiing, KT22 Mountain
Ladies' and men's speed skating
Ski jumping, Papoose Peak
Ladies' downhill skiing, KT22 Mountain

SATURDAY, FEB. 20

Morning
Ladies' 500-m. speed skating, Speed Skating Oval
Ladies' compulsory figure skating, Ice Arena
Ladies' 10-km. cross-country skiing, McKinney Creek
Ladies' downhill skiing, KT22 Mountain

Afternoon
Victory ceremonies
Ice hockey game, Ice Arena
Ice hockey game, East Rink
Ice hockey game, Ice Arena

PRACTICE SESSIONS
Ladies' and men's figure skating, West
Rink
Ice hockey, East Rink
Men's speed skating
Ski jumping, Papoose Peak
Men's giant slalom skiing, KT22 Mountain

SUNDAY, FEB. 21

Morning
Ladies' compulsory figure skating, Ice Arena
Bibbington, McKinney Creek
Men's giant slalom skiing, KT22 Mountain
Ladies' 1000-m. speed skating, Speed Skating Oval

Afternoon
Victory ceremonies
60-m. combined ski jumping, Papoose Peak
Ice hockey game, East Rink
Ice hockey game, Ice Arena
Ice hockey game, Ice Arena

PRACTICE SESSIONS
Ladies' and men's figure skating, West Rink
Ice hockey, East Rink
Ladies' giant slalom skiing, Papoose Peak
Men's slalom skiing, KT22 Mountain
Ski jumping, Papoose Peak

MONDAY, FEB. 22—Washington's Birthday

Morning
Ladies' compulsory figure skating, Ice Arena
Men's 15-km. combined cross-country skiing, McKinney Creek
Ladies' 1000-m. speed skating, Speed Skating Oval

Afternoon
Victory ceremonies
Ice hockey game, East Rink
Ice hockey game, Ice Arena
Ice hockey game, East Rink
Ice hockey game, Ice Arena

PRACTICE SESSIONS
Ladies' and men's figure skating, West Rink
Ice hockey, East Rink
Men's speed skating
Ladies' giant slalom skiing, Papoose Peak
Men's slalom skiing, KT22 Mountain
Ski jumping, Papoose Peak

FOR RESERVATIONS

Write: Olympic Winter Games
514 South Grand Ave., Los Angeles

Bowling News

Bowl-O-Drome's fast moving 268, taking over the top slot for the season high individual single pitch.
E. D. S. and the Golden Donut mob share the Friday Men's Social limelight, completing the 19th week of their winter meet all tied up in first. Action Lumber Co. rides in second, five behind the league leaders followed by the spoilers, Gus' Barber Shop, Moose 785 and the Atom Smashers. Moose Milk Five ten pin addict, D. Hoobs, listed in the number one spot for the seasons individual series topper with his impressive 616-66-682 package as team-mate, J. Madden dished up a powerful 244-18-262 for the loops solo high.
Sunday Late Birds in the last round of their winter kegling season with Medical Arts Pharmacy holding a four game margin over the second place squad, Westland Die Casting, Kirby Vacuum's rides in third, six out of first, trailed one down by the Howard Jewellers hurlers, Rigby's, Plaze Liquor and K's Poultry & Egg Ranch. Powder Box kegler, T. Metzger whipped up a neat 626-680 set to take over the top notch for the men's individual series award as N. Rowe, going through her paces for the Crow Realty quintet produced the female high of 545-144-689, Westland's, R. Schriber cut loose with a whopping 221-31-252 single to lead the gals in the high game column while R. Bagdasar, going the route for Henry's Yacht Anchorage whipped up the men's topper, a blistering 256-22-277.

All Aluminum
Glass Insulated
CAMPERS

For All Model Trucks
8 Ft. Bed
Regularly \$595

Our Price
\$329

Fred-Ken Boats
824 West Pacific Coast Hwy.
TE 4-2350—TE 5-1011
Wilmington



When the weather has held up, the salt water fishing has been good. This is generally the salt water report as we hear it. The spooky yellows seem to have moved out of the Horseshoe kelp area with very little action reported from this area. The best area has been the Barn which lies half way between San Clemente landing and Oceanside. This is a long haul but some of the Long Beach Boats are traveling the distance in hopes of getting into more yellowtail action. Locally the Bonita and some Halibut are the fish in the spot-light and there are some White Sea Bass being taken. Some of the landings are running exploratory boats to the islands and report that the fish are there but are not in the biting mood. San Diego hasn't opened up yet but this can change at any time. Some of the best San Diego fishing is done in the early months. Malibu Landing reports that they will start to operate with live bait on Feb. 15.

Surf fishing has been generally slow in the local waters with better fishing reported as you travel north. The bait is still scarce at most bait stands with very few sanderabs available.

Fishing in lower Mexico is picking up now with March and April the peak months. La Paz reports terrific fishing for Roosterfish, Yellowtail, cabrilla, red snapper, and sierra. Bill fish are being spotted but none taken at this time. Weather has been excellent and this is a great time for a trip to the gulf.

Freshwater fishing has been hampered by the weather but the Catfishermen are doing well on the River, with fair weather reported although the nights are cold.

Things to think about;
Crowley reservations will be taken for rental boats starting March 14 in room 755 Los Angeles City Hall. Be there early. Trout season is sneaking up on us.

For more information call Mel at Sportsville U.S.A. FA 8-2173.

Pony League Sets Tryouts Saturday

Tryouts for the West Torrance P.O.-N.Y. League will be held at South Torrance School baseball diamond on Saturday Feb. 13 and an additional date of Feb. 27th has been set up.

Registration is still open for boys who were born between July 31, 1945 and Aug. 1, 1947. The following are the homes where boys who have not done so as yet may register: Mrs. G. A. Wells, 3433 229th Pl., Torrance; Mrs. J. D. Johnston, 22021 Anza Torrance and Mrs. R. S. Addington, 21934 Ocean Ave., Torrance. A birth certificate and registration fee of \$2 are required.

Parks Open

Park and Grounds operated by the Torrance Recreation Department will be open on Washington's and Lincoln's birthdays.

Full schedules will be in effect both days at El Nido, El Retiro, McMaisters, Torrance, Sea-Aire and Walteria Parks and at the playgrounds of the Anza, Flavian, Hamilton, Parkway, Riviera, and Wood Schools.

Ex-Torrance Babe Ruther Joins Giant Farm Club

Ron Andersen, 21, of first signed by the Boston Red Sox early last year but was released soon afterwards because of injury.

The youngster is a graduate of the Central Torrance Babe Ruth League having pitched for the Angels.

According to a Giant spokesman Andersen will report to Tasoma of the Pacific Coast League and will begin spring training soon with the parent club.

Andersen, a twirler, was with the parent club.

CARRIER BOYS WANTED

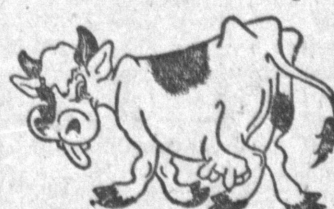
GOOD PAYING ROUTES OPEN

SOUTHWOOD NORTH TORRANCE

CALL FA 8-2345 FRIDAY AFTERNOON

LOMITA HARBOR CITY

Cash 'n Carry



Ingledwood Farms MILK

20 1/2 Qt.

Wholesale Outlet -
3400 DEL AMO BLVD.
Across from Union Carbide
TORRANCE

FOR HOME DELIVERY CALL
FR 4-8971

Use Press classified ads to buy, rent or sell. Phone FA 8-2345.

Carpet Town
The West's Largest Exclusive Carpet Stores

February SALE!

YOU CAN BUY CARPET FOR LESS, BUT YOU CAN'T BUY "CARPET TOWN" QUALITY AT LOWER . . . OR EVEN THE SAME . . . PRICES! NOW'S THE TIME TO SAVE EVEN MORE DURING OUR SPECIAL FEBRUARY SALE EVENT!

COMPETELY INSTALLED at these special SALE PRICES!

BIGELOW
Stain-Resistant
SUNSET TWEED

This is a deep, dense-pile broadloom . . . solution-dyed to resist stains. It's made to look expensive, but it isn't. Your choice of many clear and vibrant colors.

\$5⁸⁸ sq. yd.

COMPLETELY INSTALLED

All Wool
BALLERINA
BROADLOOM

This is a delightfully springy and cushiony all-wool broadloom . . . in a grand selection of 15 pastel shades, both tweeds and solid colors.

\$6⁸⁸ sq. yd.

COMPLETELY INSTALLED

SANTA ROSITA
DUPONT NYLON
Long-Wear Guarantee

A superior nylon carpet because it's made of DuPont first-quality nylon. It's woven tightly to wear longer, look more beautiful. Tweed and solid pastels.

\$7⁸⁸ sq. yd.

COMPLETELY INSTALLED

BIGELOW
Wool Wilton
WESTERN LIVING

All-wool hi-lo Wilton broadloom, loomed by Bigelow from heavy virgin yarns. Its texture resists soil, footprints, furniture marks. Choice of tweed and solid colors.

\$8⁸⁸ sq. yd.

COMPLETELY INSTALLED

NO MONEY DOWN • 3 YEARS TO PAY • BANK TERMS

Carpet Town
THE FIRST NAME IN QUALITY CARPETING . . . AT THE LOWEST PRICES

DEL AMO CENTER ANNEX IN TORRANCE

3822 Sepulveda Blvd.
Corner of Hawthorne Blvd., Torrance

OPEN WEEKDAY EVES 'TIL 9 — SUNDAYS 11-5

VAN NUYS 3900 Sepulveda Blvd. (Between Burbank Blvd. & Oxnard)	HOLLYWOOD 752 N. La Brea (Between Melrose & Santa Monica)	WEST COVINA 1156 W. Garvey (West Covina Plaza)	FULLERTON 239 Orangefair Mall (Orangefair Shopping Center)	TORRANCE 3822 Sepulveda Blvd. (Del Amo Center Annex)
--	---	--	--	--

Call Today
To see samples in your home, day or evening, no obligation . . .

FR 5-0518