

## Wilson Harries Promoted by Insurance Group

Promotion of Wilson J. Harries, 3821 W. 184 St., regional underwriting manager in Fire Insurance Exchange, has been announced by S. T. Emslie, southwest regional manager of Farmers Insurance Group. Harries began his career with the insurance organization in 1950 as a clerk. In 1951 he became a fire underwriter and in 1956 chief underwriter for southwest region, a position he held until his present promotion.

## Aeronca Announces Realignment of Top Executives' Responsibilities

A realignment of duties to strengthen Aeronca's corporate organization was announced today by John A. Lawler, president.

The assignments will strengthen Aeronca's expanded diversification program, Lawler said.

To complete the new organization, duties and responsibilities of five top executives are being reassigned. They are S. H. Badgett, Clarence G. Felix, S. J. Kuderer, Jack Lawler, and Jack Linzie.

Addition of new commercial-product lines and changes in the aircraft defense business made these changes necessary, Lawler said.

Aeronca has plants in Middletown and Torrance, engaged for research and contracts for space exploration and travel. The metal-products division, also in Mid-

dletown, manufactures stainless-steel sinks.

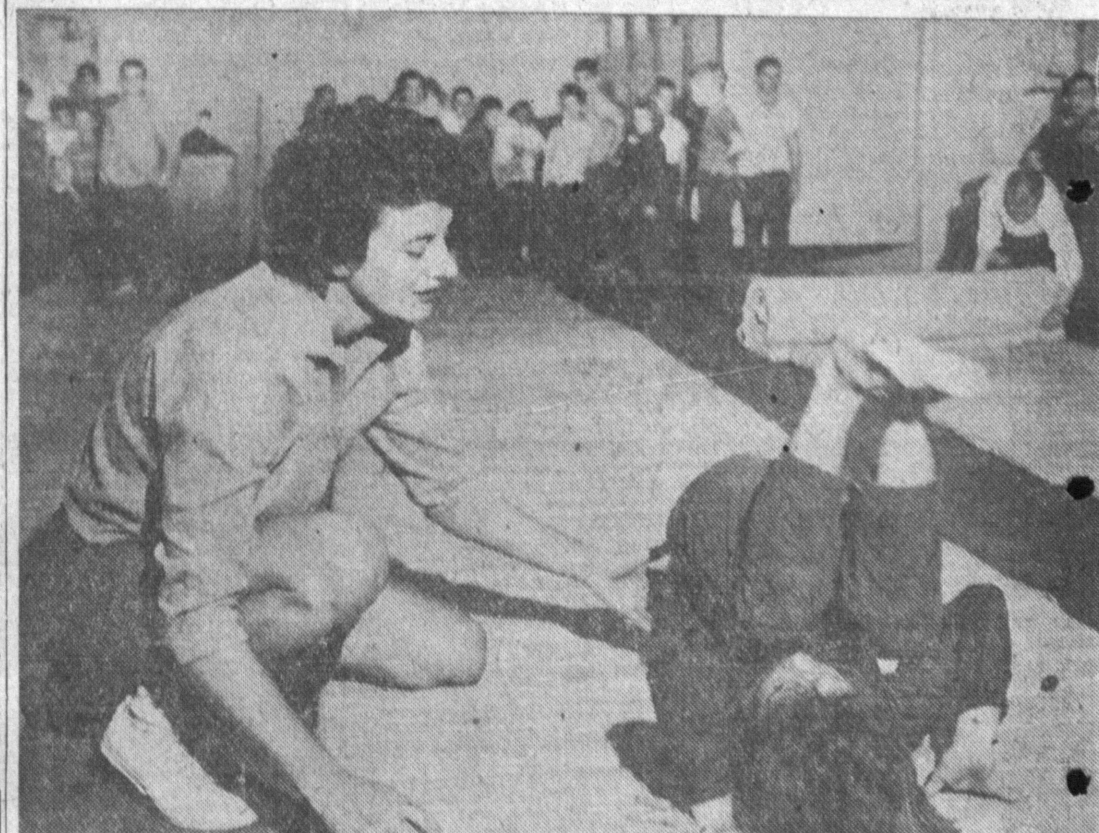
Subject to approval of stockholders in early March, Aeronca will merge with Buensod-Stacey, which will become a division of Aeronca. Buensod-Stacey, primarily engaged in large air-conditioning installation, has plants in New York and Charlotte, N. C.

Badgett will be vice president in charge of commercial products.

Felix will be responsible for the Aerospace division, a position he now holds, and for the corporation's long-range planning program.

Kuderer is vice president of finance and will be responsible for financial control and planning.

Lawler is vice president, responsible for the eastern regional office.



HAPPY LANDINGS—Instructor Mary Semeraro teaches young student to recover without injury during tumbling class sponsored by Torrance Recreation Department.

## Roughhousing Youngsters Now Landing on Their Feet

How to avoid sprains and fractures that often result from childhood roughhousing is being taught to youngsters in a special class by the Torrance Recreation Department.

The class is organized around the axiom that it isn't the fall that hurts you; it's the sudden stop.

Three score boys and girls are being taught basic tumbling tricks that keep the stop from being so sudden.

Instructors Mary Semeraro and Lee Nelson show the youngsters how to somersault, head-roll, cartwheel, and handstand in manners that develop physical agility.

Recreation Director Harry Van Bellehem, who instituted the class, said he believes the coordination will help in athletic youth and in later years.

## Harbor College Picked to Teach Police Science

Harbor College has been selected by New Mexico to provide training in police science under the New Mexico state college assistance plan.

The New Mexico plan provides special grants, which enable students to go out of the state to take courses unavailable near home.



Dr. Kline is pleased to announce the opening of his new location at 1408 Cravens Ave. (Downtown Torrance) You are cordially invited to stop in and say hello and see our new spacious modern optometric facilities.

Scientific Eye Examination

DR. A. F. KLINE

OPTOMETRIST

• Contact Lenses

• Frame Repairs (on the spot)

• Convenient Credit

• 24-Hour Service

• Our Own Laboratory for duplicating lenses (bring in your broken lens.)

DR. A. F. KLINE, Optometrist

1408 CRAVENS AVENUE

FA 8-1946

(Free Parking Across the Street)

## DENTAL PLATES

REPAIRED AND RELINED WHILE-U-WAIT

GAS OR PENTATHOL FOR EXTRACTIONS AT THE SAME PRICE

COMPLETE DENTAL SERVICE • X-ray • Partials • Fillings • Pyorrhea Treatment • OPEN EVENINGS AND SATURDAY—NO APPOINTMENT NECESSARY

DR. TARR  
CREDIT DENTIST

FA 8-0250  
For Low Prices

2418 TORRANCE BLVD., NEAR CRENSHAW • GROUND FLOOR

Store Hours: Monday and Friday Night Until 9 P.M. — Saturday Until 7 P.M.

FOR YOUR QUEEN OF HEARTS

# Newberrys Valentine Gifts

You're sure to find a fashion-right gift at a NEWBERRY LOW PRICE



## ALIVE-LOOK FLOWERS

like nature's own!

19¢ to 89¢

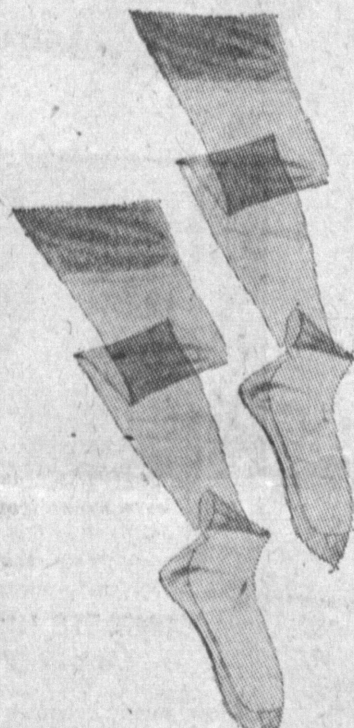
Pick your forever-blooming flowers from Newberrys "garden" of real-look polyethylene plastic posies... everything from tender, young buds to full-bursting beauties that are crush-resistant, washable, and glorious in color!



## PRETTY COTTON APRONS 47¢

reg. 59¢

Dainty waist-hugging half aprons and charming cover-all bib styles. For smart hostessing, or for work-a-day activities. Assorted percale and embossed cotton prints... floral, plaid geometric, novelty; with smart trim, handy pockets.



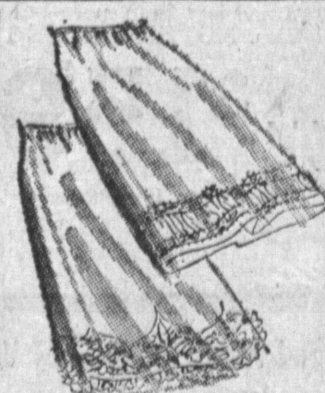
## SEAMLESS NYLONS 99¢

Pair

Famous "Powers Model" nylons—streak-free, sheer flat-ty with nude demi-toe. New Spring hues: Charm or Glamour. Sizes 8½ to 10½.

2 prs. 1.94

2 prs. 2.89



## Cotton PETTICOATS

Wide eyelite trim — full shadow panel. Sizes S, M, L, XL—Two styles.

1.69 and 1.98

MATCHING CAMISOLES 1.00



## IN WALTZ TEMPO 97¢

Reg. 1.49

Dainty waltz length gown in 2-bar acetate tricot. Several styles with lace and nylon trims. Pink, blue or maize. 34-36, 38-40.



## VALENTINE CHOCOLATES

Tempting milk chocolates... delicious nougat, caramel, fruit-flavors, creme fillings.

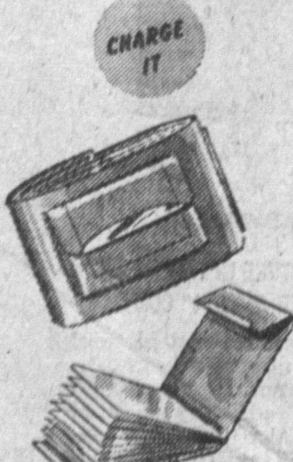
1/2-lb. box 1.00

1-lb. box 2.00



## SHIRRED-SIDE NYLONS 1.79

Double-woven nylon gloves. Three-button length with shirred side. Smart colors. 6½-8½. 1.99 Value



## 40-View WALLET

Womens' genuine "Fiesta-hyde." Expansion change purse, coin pocket, boxed.

\$1.00

Plus Federal Tax



## JEWELRY CLOSE-OUT 57¢

Values \$1-31! Necklaces, pins, bracelets, earrings; gold or silver-tones.

\*plus Fed. tax

SHOP DOWNTOWN TORRANCE -- USE YOUR CREDIT

J.J. Newberry co.

CORNER SARTORI AND EL PRODO

## Beautiful Modern Console Cabinet

PLUS

Beautiful Hassock With Large Storage Compartment

FREE SEWING LESSONS

AND 1960

Pushbutton SUPERNOVA

# NECCHI

With Automatic Needle Threader

All 3 for less than the price of the sewing machine alone!

SPECIALS

ONLY

Hurry for These Floor Models and Demonstrators

Singer Automatic \$149.00

REG. \$237.00 NOW

Singer Slant Needle \$114.00

REG. \$229.00 NOW

Singer Lightweight, now \$49.00

Adlermatic, now \$139.00

1959-REG. \$347.00

\$159.50

(Limited Stock)



## ARMAND'S SEWING CENTER

4543 Redondo Beach Blvd.

1½ Blocks West of Hawthorne Blvd.

ACROSS FROM SOUTH BAY CENTER NEXT TO PEP BOYS

FR 9-9903 FR 9-9480