

LOOSELEAF NOTEBOOK

By ALAN ANTHONY

Perhaps we're fighting a losing battle trying to get back an even break for youth. Youngsters 30 years ago did not suffer the resentments, guilts, and rebellion so apparent today.

In those days children were permitted to be children and to play by themselves—with companions they enjoyed. If they didn't enjoy them, they changed to another "group" at will. They didn't need a meeting with a counselor and morals instructor to try and get at the root of the forces of their inimical drives.

The kid just didn't like the company, so he changed it. Too logical, too oversimplified for today.

Today the child is channeled, equalized, forced into an age group though he prefers older company—or younger, lectured to, advised, counseled, adjusted, told what to like, and made to feel like an arch criminal over the simplest breach of custom.

Latest straw in the wind is a new system by a law-enforcement agency quite close to us, though not ours. Tickets will be issued school children for such things as "unsafe walking," riding bikes on a sidewalk, riding double, "obstructing pedestrians."

The ticket is sent to the superintendent of schools, although what he is doing in the act is not clear. The "violation" (criminal), and maybe his parents, then will be summoned by a school authority for "counseling."

A school official has no right to counsel anyone about

what happens off the school grounds, but by the time this routine is over the child will feel like he'd burned down City Hall.

Riding double on a bike used to be half the fun, and it told the world you had a friend. Enemies didn't ride double. And justice was swift.

In our home town, old Pinky Morway, the town constable, drove his pink walrus mustache round town in a Model T. He had a cure for riding bikes on the sidewalk. It went something like this: "Getcha goddam bike off the sidewalk!"

Pinky's wife taught eighth grade. Her outlook was just as uncomplicated. The biggest kid in class was from the other side of the tracks, and a nice guy withal. It was he we'd call when we were on the bad losing end of a fight. He could not be intimidated.

But when once he gave Mrs. Morway some lip, there was no counseling, no Rorschach tests, no fooling. She hauled him off the chair by the shirt front, dragged him to the library, and shook him till half the books toppled off the shelves.

Resentments? He loved her. So did we all. We hadn't yet learned how to abreact the forces of our hostilities. We just hoped no teacher would be out there at recess to louse up our game of kick-the-can. We liked our play disorganized.

There must be a moral, but this present writer will leave each to draw his own.

Use Press classified ads to buy, rent or sell. Phone FA 8-2345.

WORK MADE EASIER BY AMAZING LENSES!



Fitting eyeglasses to YOUR particular "job pattern" can be dramatically helpful in avoiding work strain! For example, if you need arm's length vision at the top of your glasses, distance vision through the CENTER, and reading correction at the bottom... you can have those glasses now! Or bifocals can be fitted with the near segment at the TOP of the lens so overhead work can be seen clearly without tilting the head. Your special requirements can be satisfied exactly with lenses ground in our own laboratories. Let us show you how your work can be made easier. No obligation; come in soon. Liberal terms. (32 years in Harbor Area.)

DR J. M. SOSS, Optometrist
1268 Sartori Ave. FA 8-6602
810 AVALON, WILMINGTON

4 1/2% current yearly rate PAID QUARTERLY

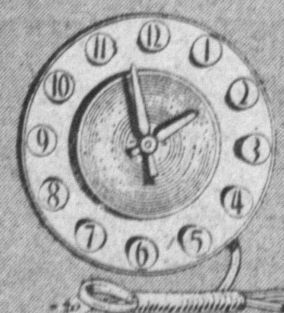
OPEN YOUR INSURED SAVINGS ACCOUNT—TODAY

FREE GIFTS



Helpful Hannah Kitchen Aid Set

NEW ACCOUNTS OR ADDITIONS OF \$200 TO \$499



Kitchen Queen Electric Clock

NEW ACCOUNTS OR ADDITIONS OF \$500 OR MORE

one gift per customer for each new account or addition



ASSETS OVER \$62,000,000
Southwest Savings
AND LOAN ASSOCIATION

INGLEWOOD: 2700 W. Manchester (at 6th Ave.)—PL 3-2164
TORRANCE: 1603 Cravens (at Marcelina)—FA 8-6111



LIBRARY OPENS — John D. Henderson, county librarian, congratulates Irene Davenport, branch librarian, on fine new library in Lomita. Facility opened at 24648 Narbonne Ave.

Letters

Torrance Water Suit

EDITOR THE PRESS:
We are publicly asking Torrance city officials to withdraw their condemnation suit against Narbonne Water Co. No. 2, as on Jan. 5, 1960, the people in the area voted more than 3 to 1 to join the area with County Water District 13 and bond the area to buy the company and replace worn-out mains.

This suit prevents the county water district from fulfilling its obligation to start work immediately. County water officials have asked Torrance to withdraw the suit, but as of this date no word has been received that Torrance city officials have acted

Chest Seeks Donation of Land for Center

If it could get the land now, the Harbor area could have a new Community Chest service center within a year, Jimmy Visceglia, chairman of the Chest's center relocation committee, predicted today.

Money is available now for the building but not the land, he said.

"Our problem is to find a generous person or business, or even a government body, that would give us land for the center."

Visceglia said the Chest must move out of the present San Pedro center because it is overcrowded.

Use Press classified ads to buy, rent or sell. Phone FA 8-2345.

'CITIZEN OF THE YEAR' RACE UNDER WAY

More than 1000 nomination blanks for Torrance's "Citizen of the Year" for 1959 were mailed this week to business and industrial firms and community organizations, according to an announcement today by J. H. Paget, president of the sponsoring Chamber of Commerce.

Paget said additional forms can be obtained at local newspapers and at the chamber office, 1511 Cravens Ave.

The award, in memory of two departed Civic Leaders—Dr. William I. Laughon and Grover C. Whyte—will be presented as a highlight of the chamber's annual banquet at the Statler-Hilton in Los Angeles March 30.

Jim Becker, banquet chairman, said the award will be judged on what the nominee has contributed to the citizens and city of Torrance in 1959.

1959 Top Year at Union Carbide

Sales and net income of Union Carbide Corp. for 1959 were the highest in the corporation's history, Morse G. Dial, chairman and chief executive officer, reported in a preliminary statement.

Sales for the year were \$1,531,343,000, 18% above sales of \$1,296,532,000 for 1958; and 9% above sales of \$1,395,082,000 for 1957, which was the previous record.

Net income amounted to \$171,637,000, or \$5.70 per share, an increase of 37% over the \$4.15 per share earned in 1958.

Use Press classified ads to buy, rent or sell. Phone FA 8-2345.

DENTURES

• IMMEDIATE DENTURES

• REPAIRS... RELINES

• NEW MAGNETIC DENTURES

• Pensioners Welcomed

Extractions with Sleep

SAME LOW PRICES
(We Arrange)

DIFFICULT CASES

No Extra Charge

OPEN EVENINGS
AND SATURDAYS

DR. WHARTON
NO OTHER DENTIST IN OFFICE

1308 SARTORI

DOWNTOWN TORRANCE
ABOVE McMAHAN'S FURNITURE

NO MONEY
Down
18 Months
to Pay

DR. WHARTON
Member California
Society of
Dental Surgeons

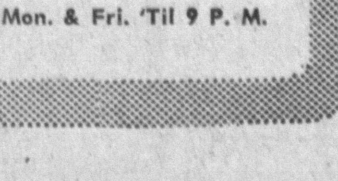
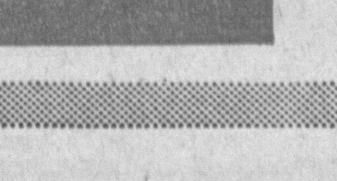
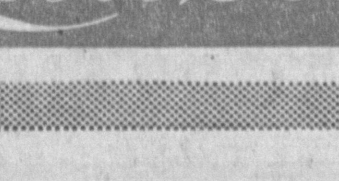
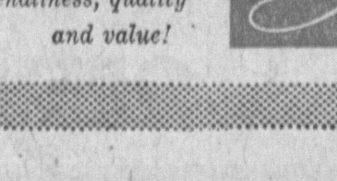
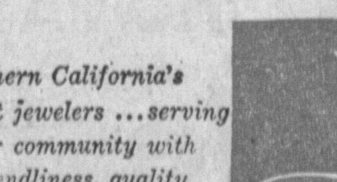
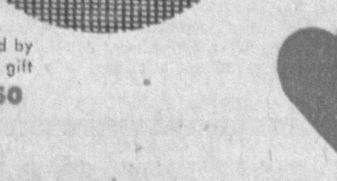
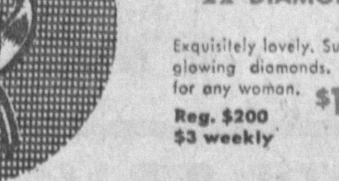
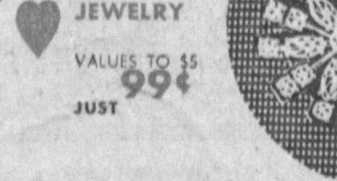
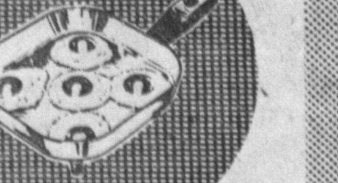
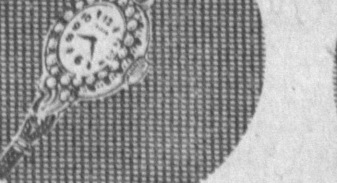
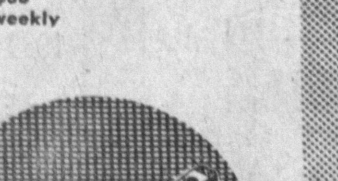
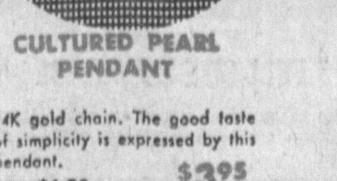
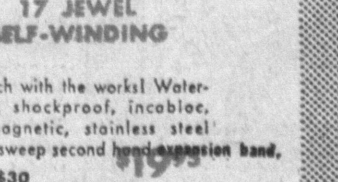
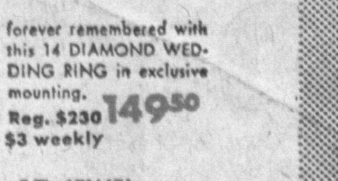
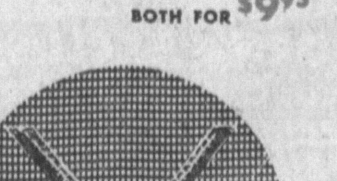
FA
0-0707
FOR PRICES
IN ADVANCE

This Valentine's Day give a lasting gift...

JEWELRY FROM *Lawson's*

Widest Selection—Lowest Prices in Town
NO MONEY DOWN • TAKE A YEAR TO PAY

OUR 19 STORE BUYING POWER ENABLES US TO OFFER YOU THE LOWEST PRICES ON TOP QUALITY JEWELRY



Southern California's
largest jewelers... serving
your community with
friendliness, quality
and value!

Lawson's JEWELERS

1301 SARTORI AVE.
DOWNTOWN TORRANCE
FA 8-4313
Open Mon. & Fri. 'Til 9 P.M.