

**Professional Drafting Service**

INCOME—RESIDENTIAL—COMMERCIAL—REMODELING—BLUEPRINT

PRODUCT DISPLAY ROOM OPEN TO PUBLIC

**ASSOCIATED ENTERPRISES**

1517 W. Carson St.

FA 8-3551

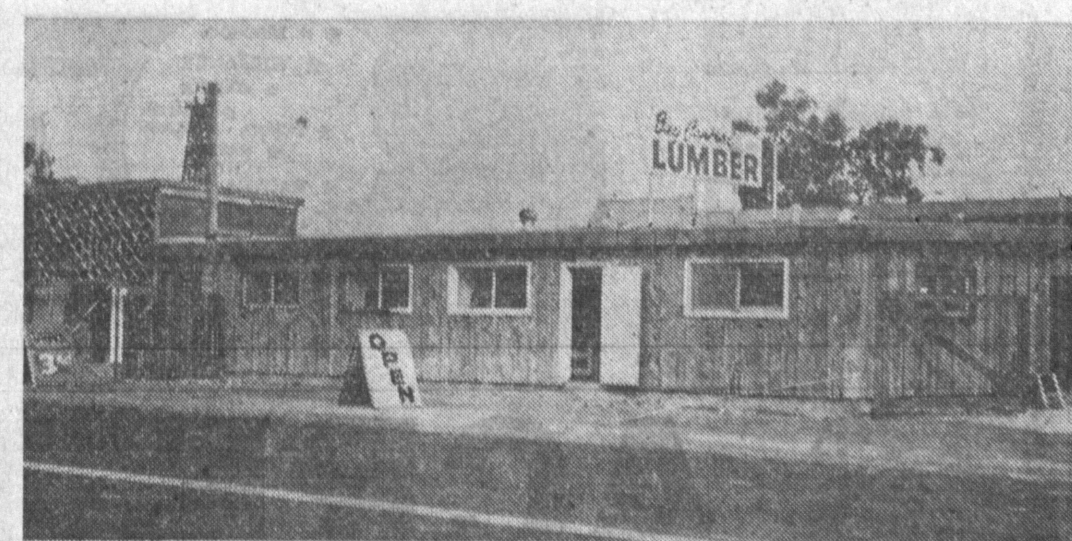
**New Lumber Firm Has Opening**

A brand-new lumber firm announced a grand opening today. Owner George Higl and General Manager "Nick" Nicholson today announced the opening of their Bay Central Lumber Company, 2497 West Sepulveda, between Crenshaw and Arlington.

Open daily between 9 a. m. and 5:30 p. m., as well as on Sundays from 9 to 2. Bay Central Lumber specializes in paneling, wood fencing, with the largest lumber selection in the South Bay area.

Bay Central Lumber will provide free and immediate delivery anywhere in Torrance, with no order too large or too small.

Owner Higl and Manager Nicholson invite the patronage of contractors and industrial firms as well as "do-it-yourself" home-owners.



BAY CENTRAL LUMBER

**Wood Fired Meats**

at

**VIC'S BAR-BQ RESTAURANT**

● SPARE RIBS ● BEEF ● PORK ● HAM ● CHICKEN

Also Food to Go... DA 3-8330 ● Complete BBQ Menu

-----FREE-\$1.49 VALUE-FREE-FREE-----Bring This Ad and Receive-----

Combination Brass Letter Opener, Lucite Magnifier &amp; Telephone Dialer



1404 REDONDO BEACH BLVD. at NORMANDIE, GARDENA

**Business Leaders Return to School**

Many Torrance business leaders and industrialists will return to school on Thursday, March 17, as part of Education-Business-Industry Day.

The Torrance Unified School District and the Torrance Chamber of Commerce cooperate to put on the event. Last year, teachers toured a number of local plants and businesses to learn what makes them run. This year, the businessmen will visit the schools to discover what their programs are.

The day will begin with a general meeting at Torrance High School, where Superintendent J. H. Hull and other district officials will give introductory remarks. Then, the businessmen will be taken to various schools.

The principals will explain operations of schools and the business leaders will sit in during classroom discussions of various subjects. They also will eat with the teachers.

The program is designed to

promote both better understanding of the free enterprise system and of the school system.

Use Press classified ads to buy, rent or sell. Phone FA 8-2345.

**Cash and Carry**

Homo—Past. MILK qt. 20¢

**PALOS VERDES VIEW DAIRY**

22845 Hawthorne Bl. FR 5-8615

Torrance's Drive-In Dairy

TORRANCE PRESS

Publication office at 1405 Cravens Ave. Torrance, California. Plant at 20366 So. Hawthorne Blvd., Torrance, California.

Established April 15, 1949. Published Semi-weekly, Thursday and Sunday. Entered as second class matter Oct. 8, 1957, at Post Office, Torrance, California, under act of March 3, 1879.

Adjudicated a legal newspaper by Superior Court, Los Angeles County, Calif. Audited Decree No. L. B. 23468, April 8, 1958.

Office: 1405 Cravens Avenue, Torrance, California.

Plant: 20366 S. Hawthorne Blvd., Torrance, California.

Telephone: FAirfax 8-2345.

W. E. Kane, General Manager.

Subscription Rates (Payable in advance)

Carrier Delivery \$4c per Month

Local and Out-of-Town, per Year \$12.00

All manuscripts submitted at owner's risk. The Torrance Press can accept no responsibility for their return.

**Bunk Bed Ensembles**

MAKES EASILY INTO 2 SINGLE BEDS

- All Hardwood
- Salem Maple Finish
- 2 Innerspring Mattress Combinations
- Guard Rail
- Ladder

PAY ONLY  
**\$1.00**  
WEEK

Only  
**\$109.50**

WE CARRY OUR OWN CONTRACTS  
YOU DEAL ONLY WITH THE OWNERS  
FRANK HIGGINS — STEVE SCHMIDT — KEN BELLES

**STAR FURNITURE COMPANY**

2103 Torrance Blvd. FA 8-1247

OPEN FRIDAY EVENINGS

**GRAND OPENING****RAMBLER**

America's First and Most Popular Compact Car  
**Announces A Brand New Dealership**

PRICES  
START AT  
ONLY.....  
**\$1795**

Special Get Acquainted Offer  
TO HOME OWNERS OF THE SOUTH BAY AREA  
**BRAND NEW '60 RAMBLER**  
**NO MONEY AND DOWN ONLY \$44.99 PER MONTH**

**FREE KELVINATOR REFRIGERATOR**

NOTHING TO BUY—

You need not be present to win. Just fill out this coupon and deposit it in the container provided—Inspect the big, 13.1 cu. ft. refrigerator now on display—Drawing held Feb. 29th.

THIS AD WORTH  
**\$100.00**

Toward the purchase of any new '60 Rambler Rebel V-8 or '60 Ambassador Series. . . Our Used Car inventory is exceptionally low, so we will offer you a special bonus for your present car, for the remainder of this month.

**South Bay****Pacific Rambler Co.**

15211 HAWTHORNE BLVD.

LAWNDALE

OS 9-3361

Open Evenings and Sundays 'Til 9 P. M.—Just ½ Mile South of Rosecrans Avenue

**CLIP and SAVE**

To be deposited at South Bay Pacific Rambler for Free Drawing on new 13.1 cu. ft. Kelvinator Refrigerator.

NAME.....

ADDRESS.....

PHONE.....

Year and Make.....

Your Present Car.....

**DENTURES**

- IMMEDIATE DENTURES
- NEW MAGNETIC DENTURES
- EXTRACTIONS WITH SLEEP
- SAME LOW PRICES (We Arrange)
- REPAIRS... RELINES While U Wait
- Pensioners Welcomed DIFFICULT CASES No Extra Charge
- OPEN EVENINGS AND SATURDAYS

NO MONEY  
Down  
18 Months  
to Pay

**DR. WHARTON**  
NO OTHER DENTIST IN OFFICE

1308 SARTORI DOWNTOWN TORRANCE ABOVE McMAHAN'S FURNITURE



DR. WHARTON  
Member California Society of Dental Surgeons

FA  
0-0707  
FOR PRICES IN ADVANCE

**TAKE OFF THOSE BLINDERS!**

WE ARE RIGHT NEARBY AT

24811 S. Western Ave. (Just North of Lucky Market)

- PARKING IS FREE!
- SERVICE IS GRAND!
- THE SELECTION IS WONDERFUL!
- THE PRICES ARE RIGHT!

● Open Mon. Through Sat., 9:30 a.m. to 8 p.m.



Why Struggle with Crowds?  
Why Go Further?

**WESTERN SHOE MART**

24811 S. Western Ave. DA 6-8433

Just North of Lucky Market