

Industrial Cagers Play Three Games

Torrance Recreation Department's Industrial Basketball League began play Tuesday evening with a series of three games played in North High School's Gymnasium. Aeronca Manufacturing Co. defeated rival Ryan Aeros quintet, 88-22 in the opening contest. City Employees Local No. 1117 won a low scoring game from Manor Barbers in the 8 p.m. fracas and Harvey Aluminum, last year's Industrial Champions, upset General Telephone, 44-39, to cap off the evenings program.

Aeronca 36 Ryan Aeros 22
F-0 Chtrowski 13
F-4 Ferguson 10
C-10 Carman 10
G-3 Cobby 10
G-15 Clark 10

Aeronca 15 Ryan Aeros 22
F-0 Chtrowski 13
F-4 Ferguson 10
C-10 Carman 10
G-3 Cobby 10
G-15 Clark 10

Reserves: Aeronca: Bauer Bingham, Beckett, Warner Crawford, Ross, Seeley 6. Ryan Aeros: Jones, Angel 1, Stratford 4, Lutz.

Manor Barbers 22 Local No. 1117 28
F-12 Thomson 10
F-3 Latimer 10
C-7 Buettgenbach 10
G-4 Clark 10
G-4 Norton 10

Reserves: Manor Barbers: Moore 4. Local No. 1117: Valdez.

Gen. Telephone 39 Harvey Aluminum 44
F-17 Gaff, B. 10
F-12 Liley 10
C-0 Kloss 10
G-0 Sals 10
G-8 Schooley 10

General Telephone 11 12 13 3-29
Harvey Aluminum 4 14 15 9-44

Reserves: General Telephone: Espinoza 2, Goldstone, Kelly, Ross. Harvey Aluminum: Sun, Thomas, Johnson 11. Industrial League Schedule — Tuesday, Jan. 12 (at North High School) 7 p.m. Harvey Aluminum vs. Manor Barbers, 8 p.m. City Employees No. 1117 vs. Aeronca.

Faculty League Opens Play

Torrance Area Faculty Basketball League opened play Monday with three games staged in North High School's gymnasium. South High's Party House team won over North High, 46-26 in the opener. Peary Jr. High measured Palos Verdes Faculty 46-16 in the 8 p.m. contest and Torrance High took a 45-39 thriller from the Hawthorne High pros in the evenings finale.

North High 26 So. High Party House 46
F-11 Winn 13
F-2 Smith 10
G-12 Wood 10
G-6 Phillips 10

Reserves: North High: None. **South High:** Bonhelm 2.

Peary Junior High 44 Palos Verdes 16
F-14 Bulman 10
F-12 Treise 10
C-2 Jones, O. 10
G-2 Jones, T. 10
G-2 Korra 10

Peary Junior High 9 15 10 12-46
Palos Verdes 0 5 4 5-16

Reserves: Peary Jr. High: Schlossman 5, Selue 0, Welch 11, Zappa, 10. Palos Verdes: Coulter 1, Horne, Mihaljevich 4, Mooney, Watson.

Torrance High 45 Hawthorne High 39
F-14 Bulman 10
F-12 Treise 10
C-20 Ogle 10
G-7 Christensen 10
G-8 Sutherland 10

Torrance High 12 13 11 9-45
Hawthorne High 4 9 14 10-39

Reserves: Torrance: Hoag, Di-Flour, Rudolph 5, Bezzold 5. Hawthorne: Sevier, Hassler 6, Semon 8, Hamilton, Schuler.

Faculty League Schedule — Monday, Jan. 11 (at North High School) 7 p.m. Hawthorne High vs. Peary Jr. High, 8 p.m. Palos Verdes vs. North High, 9 p.m. South High vs. Torrance High.

9 p.m. Ryan Aeros vs. General Telephone Co.

Harbor College Slates Course in History of the Americas

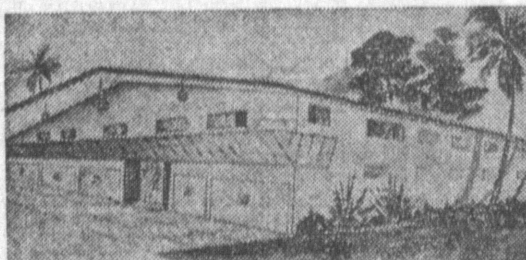
The History of the Americas, science, will be offered at Harbor College for the first time next semester, according to an announcement today by Dr. Sydney J. Ruffner, course instructor. The class will meet Monday

evenings from 6:30 p.m. to 9:30, beginning Feb. 1. There is no prerequisite, and a knowledge of Spanish is not required. Course content will cover the history of Latin America from Pre-Columbian times to the Wars of Independence. Slides and films will be used to illustrate class lectures. Cultural as well as historical development will be stressed. "Special emphasis will be placed upon the European background."

LUXURY AT LOW COST

MODERN RESORT LIVING

★ Near two fine shopping centers
★ Tropical landscaping
★ Individual garages or carports with large storage space
★ MANAGER IN APT. 33 at all times



GARDENS DEL AMO

3544 Garnet St.
Torrance

Phone FR 3-3158

- 44-FT. HEATED AND FILTERED POOL
- WALL-TO-WALL CARPETING
- PRIVATE ENCLOSED PATIOS
- BUILT-IN RANGES, DISPOSALS
- INDIVIDUALLY CONTROLLED HI-FI
- 60"x136" CENTER PATIO
- 80' SUN DECK
- HUGE WALK-IN CLOSETS
- COMPLETE LAUNDRY FACILITIES
- 1-2 BEDROOMS, 1-2 BATHROOMS
- FURNISHED OR UNFURNISHED

First-O-Week Values! Blue Chip Stamps! Both at Food Giant!



SKIPPY DOG FOOD
3 Tall No. 1 Cans **25¢**

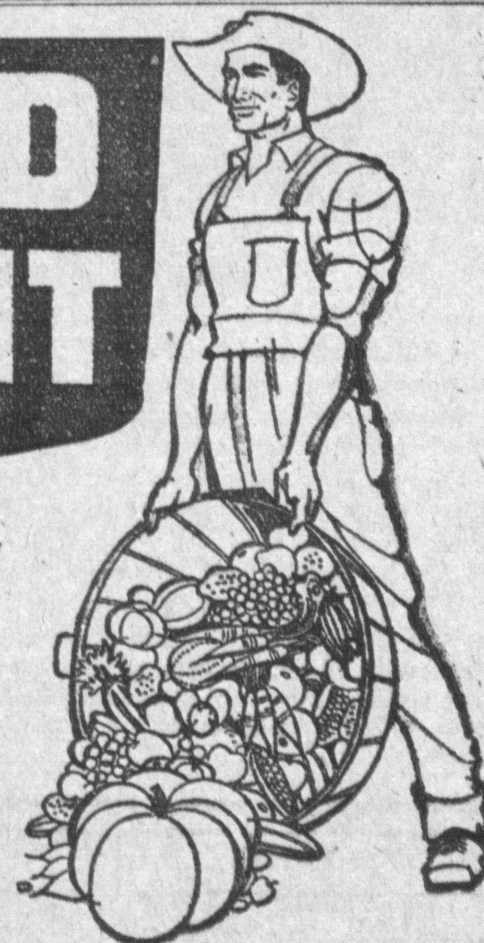
Food Giant Markets now offer you Blue Chip Savings Stamps! High-quality premiums featuring such famous names as Sunbeam, Westinghouse, RCA are available at redemption centers located conveniently throughout the entire Southland. Start saving the newest, fastest, best way TODAY!

ALL GRINDS
FOLGERS COFFEE

1-lb. Can



55¢



TEMPTING • Purple
OREGON PLUMS
Large No. 2 1/2 Can **19¢**

Bowling News

Bowl-O-Drome's Third Annual Holiday Doubles Sweeper exceeded all expectations with 1352 entries pushing the \$1500 guaranteed pay-off way over the top for a whopping \$2778.20 jackpot.

Copping the largest hunk of loot in the Men's Doubles is the W. Bates and T. Lazar combination for their sizzling 1376 tally, walking off with first place honors and \$205.36. J. Morris and L. Marcum fell a few sticks shy of the top slot with their 1366 effort, took second and \$187.04. Coming in third with an impressive 1355 total good for \$158.02 is S. Soukovich and J. Zexon while D. Dwyer and B. Stafford connected their duel efforts for 1348 for \$148.34. Fifth place money going to S. Mendola and J. McCall for their 1347 chaulked up on the scoreboard with R. Randazzo and H. Carlson posting 1335 and B. Chaplin and D. Younger, 1327, coming in sixth and seventh.

Mixed Doubles top spot latched onto by the Johnson and Johnson twosome, racking up a powerful 1328 for a hefty \$196.74 pay-off while D. Barkdull and J. Cucci scored with 1319 for second place green stuff of \$162.18. L. Richardson and L. Jeffries came up with a 1301 tally for third and \$149.38. W. Bates and K. Bates claimed fourth with their 1296, as the Walls and Walls combination settled for fifth with their 1279.

R. Butcher and T. Cochran

posted an impressive 1267 taking first place honors and loot of \$100 in the holiday event Ladies division, with D. Cato and A. Johnson scoring 1251 for second and P. Walls and L. Barnowsky third with their 1248.

Individual female honors copped by K. Bates and her towering 670 set going to the top in the ladies singles, paying off \$32.76. Second place and \$20.03 latched onto by K. Roddan, connecting her three game effort for a whopping 666. L. Jeffries and her 665 took third and \$42.58 while C. Cucci claimed fourth with 662 and Z. Church fifth, posting a nifty 651.

T. Lazar connected for a blistering 725 tally to capture the top position in the men's singles to pocket \$83.27 as the \$75.70 second place green stuff goes to D. Redfoot for his sizzling 714. Third spot honors and \$56.77 claimed by B. Chaplin for his 712 package while the 709 posted by S. Mendola took fourth and \$49.22. L. Wickesham followed with 708, J. McCall, 707, L. Antista, 706 and J. Cuervo with 695.

Checks to the southland winners will be mailed on the completion of the usual verifying of averages when the results will be declared official.

Augustus Caesar is said to have passed the word along that he had a vision in which he saw himself receiving gifts from the Senate and the people on Jan. 1.

Elsie Dean's

OPEN FRIDAY 9 A.M. TO 9 P.M.

446 W. Sixth St. • San Pedro • TE 2-2813

SEMI-ANNUAL SALE

Clearance Sale of groups of Dresses, Coats, Suits, Millinery, Blouses, Robes and Lingerie.

We Carry Sizes 9 to 17; 10 to 44; 12 1/2 to 24 1/2

DRESSES—Casual, Dressy, Cocktail & Formal

Group 1. Values to \$29.98 Special \$11.00
Group 2. Values to \$29.98 Special \$14.98
Group 3. Values to \$35.00 Special \$19.98
Group 4. Values to \$39.98 Special \$22.98
Group 5. Values to \$59.98 Special \$35.00

SUITS—Group 1, Values to \$49.98 Special \$29.98
Group 2. Values to \$55.00 Special \$39.98
Group 3. Values to \$35.00 Special \$19.98
Group 4. Values to \$39.98 Special \$22.98
Group 5. Values to \$59.98 Special \$35.00

100% WOOL COATS—Plain and tweeds. Reg. \$89.98
Special \$65.00. Values to \$69.98, Special \$45 and \$35

SHORTIES—100% wool-tweeds and plain. Regular \$49.95
Special \$35.00. Regular \$29.98, Special \$19.98

BLOUSES—Drastic reductions. Broken sizes and colors.

LINGERIE—Broken sizes. Nylon with matching negligee, gowns, slips, padded robes, morning coats (cotton and nylon)—drastically reduced.

★ ★ Closing Out Millinery Dept. ★ ★

Velvets, Felts and Straws—1/2 Off

All Sales Final, No Refunds or Exchanges

USE YOUR BANKAMERICARD

PICTSWEEET VEGETABLES

PICTSWEEET • Frozen • Cut

CORN

PICTSWEEET • Cut or French

GREEN BEANS

PICTSWEEET • Frozen

FRENCH FRIES

YOUR CHOICE

6 Reg. Pkgs. 89¢

Reg. Pkgs.

FOOD GIANT • Makes All Your Things Whiter, Brighter

Liquid Bleach

1/2 Gallon Bottle **25¢**

FARM FRESH PRODUCE
U.S. NO. 1 WHITE ROSE
POTATOES
10 lbs. **49¢**
FOR SCHOOL LUNCH BOXES & SNACKS
SEEDLESS RAISINS
5 1/2-oz. Boxes **15¢**



Delicatessen
NEW! PATMAN'S
Macaroni & Cheese LOAF 6-oz. Pkg. **39¢**

GUARANTEED MEATS
STEAK & CHOP SALE!
Fill your freezer with Rib Steaks and Lamb Chops during our first of the week sale!
U.S.D.A. "CHOICE" or "BANQUET PERFECT"
RIB STEAKS
SHORT CUT & TENDER! EXTRA VALUE TRIMMED!
Thick but tender! All excess fat and bone removed from our steaks... and all our meat... BEFORE weighing!
U.S.D.A. "Choice" or "Banquet Perfect" • Small Loin
LAMB CHOPS
"Choice" or "Banquet Perfect" • Large Loin
LAMB STEAKS 79¢
"Choice" or "Banquet Perfect" • Lean
LAMB PATTIES 39¢
U.S.D.A. "CHOICE" or "BANQUET PERFECT"
MEATY BEEF SHORT RIBS
A different dish... that's delightfully flavorful yet hearty and appealing!
TOP QUALITY • FROZEN • 2 to the Pound
FRESH WATER TROUT 59¢ lb.

SUNSHINE HI HO CRACKERS 1-lb. Box **37¢**
BIRDS EYE • Frozen CUT CORN 10-oz. Pkg. **19¢**

CLOREX BLEACH 1/2-Gal. Bl. **39¢**
GREEN GIANT • Whole SPEARS ASPARAGUS No. 300 Tall **49¢**

GREEN GIANT • Cut SPEARS ASPARAGUS 10 1/2-oz. Can **25¢**
MOTHER'S SUGAR WAFERS 5-oz. Box **29¢**

PREM for Your Coffee, Reg. Jar 35¢

In Gardena 14990 S. Crenshaw Blvd. at Compton
In Hawthorne 423 S. Hawthorne Blvd. at 132nd
In Inglewood 11202 S. Crenshaw Blvd. At Imperial
In Los Angeles 11208 S. Western Ave. at Imperial
In Manhattan Beach 2400 Sepulveda Blvd. at Marine
In North Torrance 4848 W. 190th St. at Anza
In Torrance 3731 Pacific Coast Hwy. at Hawthorne
In San Pedro 28849 S. Western Avenue