

SP 5-1413

TE 3-3505

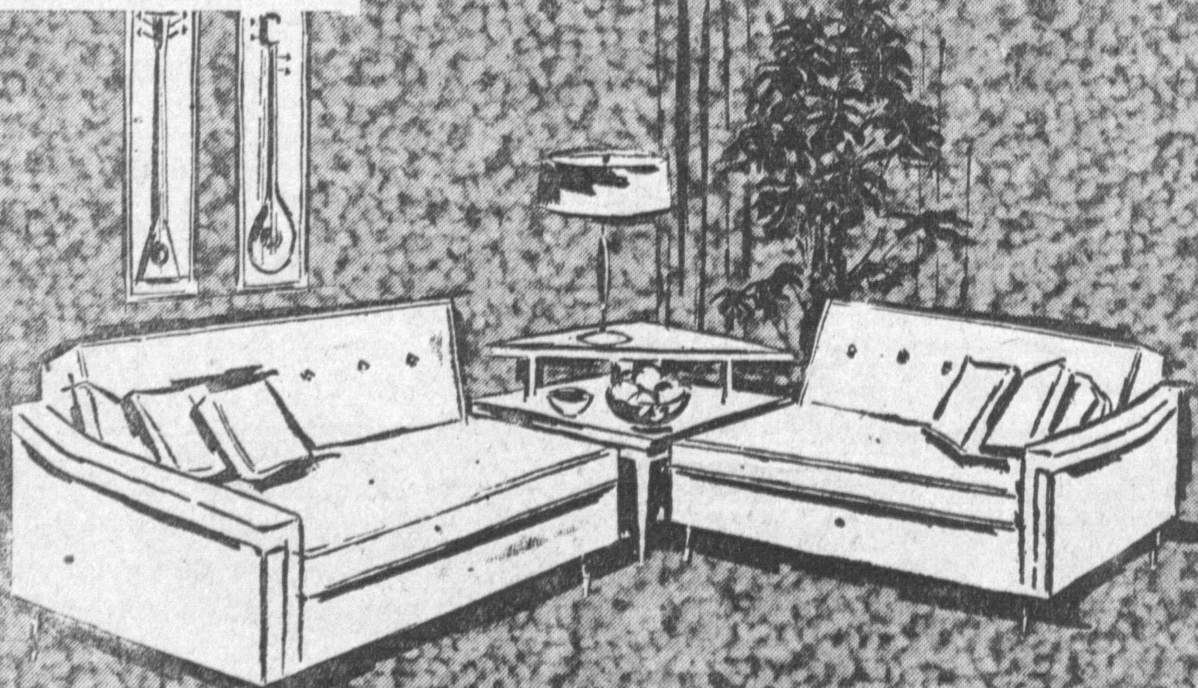
A PHONE CALL BRINGS THE STORE TO YOUR DOOR



SP 5-1413

TE 3-3505

A PHONE CALL BRINGS THE STORE TO YOUR DOOR



# Mid-Winter Stock Reduction



## You Name It . . . . We Have It! WALL-to-WALL



Including the  
Famous  
Chromespun  
Plus Many Others

VALUES TO  
**\$8<sup>95</sup>**

Installed the Tackless Way  
COMPLETE WALL TO WALL  
INSTALLATION

ALL THE DOOR METAL YOU NEED FREE

Installed Over 50-oz.  
Good Housekeeping PAD--

**Tweed  
Broadloom**

Choose from  
Full Rolls  
12  
Decorator  
Colors

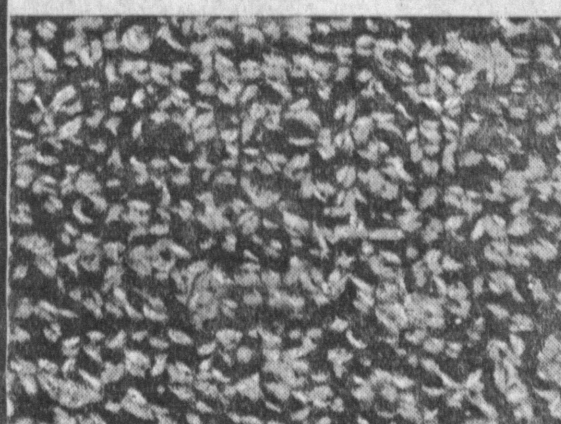
**NOW**

**3<sup>95</sup>**  
SQUARE  
YARD  
Completely  
Installed

GENUINE  
AXMINSTER  
BROADLOOM

In 12 lovely decorator col-  
ors. 12 and 9 feet wide.  
\$7.95 Value.

**3<sup>95</sup>**  
Sq.  
Yd.



20,000 Yards  
OF  
**100%**  
Broadloom  
Carpeting

25 DECORATOR COLORS

Sorry—We Can't Mention Brand Name  
—But You'll Recognize It When You  
See It! . . .

FROM AMERICA'S  
FINEST MILL!

VALUES  
TO  
\$6.95  
**\$1<sup>95</sup>**  
Square  
Yard



**Now!  
Top Quality!  
Terrible Savings!**

FAMOUS NAME DELUXE  
**CARVED WOOL  
WILTON**

THICK, LUXURIOUSLY CARVED ALL  
WOOL WILTON . . . CHOOSE FROM  
ROSE, BEIGE, GREY, GREEN, NUTRIA  
AND BEIGE

Regular \$12.95 Value

**\$5<sup>95</sup>**  
Sq.  
Yd.

## 9 x 12 RUGS

400 to Choose From

SALE LIMITED TO STOCK  
ON HAND

**\$89<sup>50</sup>**  
Value  
NOW  
**29<sup>50</sup>**

## 1000 Room Size Remnants

Room Size Remnants from Which to Choose  
● CARVED WOOL WILTONS ● FRIEZES  
● HI-LO PILES ● CHENILLES

If you are looking for top quality . . . wool  
wiltons . . . Values to \$18.95 a sq. yd. . . .  
Make it a Must to see these large remnants.  
Examples: 15' x 20'—12' x 15'—and 15' x 13'.  
Mohawk • Firth • Bigelow • Magee & Others

**60% OFF** And  
More

# MODERN

17th and Pacific  
San Pedro  
TE 3-3505

# CARPETS

14456  
VENTURA  
BLVD.  
SHERMAN  
OAKS