

POLYNESIAN OFFERS TAHITI TOUR



TORRANCE TO TAHITI—A bachelor tour to the South Seas, offered by the Polynesian Restaurant, is made even more alluring by Tetua Paheo, who is visiting here from Tahiti. The 14-day tour departs May 10 from Torrance via T.A.I. Airline's inaugural flight from L. A. to Tahiti, Moorea and Bora Bora.

Ike Addresses Congress

Torrance citizens will have several chances to hear President Eisenhower's State of the Union message today. Scheduled before a joint session of the Congress

this morning, CBS will carry a televised version from 11:30 a.m. to 12 noon. NBC will rebroadcast the address by radio and TV this evening from 9:30 to 10:30

'Celebrities' Open At Marineland

A new song-and-fun team, the brightest entertainment ever, opens tonight at Marineland Restaurant in Palos Verdes, where the musical comedy-harmony group is beginning its premiere engagement in the dining establishment's "Porpoise Room."

They are the celebrities, a captivating quintet headed by Larry Stuart at the accordion and piano.

Joining him in the "Porpoise Room" are Dick Baker, Allen Weiss, Freddie Thomas and vocalist Georgi Griffith. Their instrumentation includes bass, trombone, drums and trumpet.

The Celebrities are signed by George M. Foster, owner of Marineland Restaurant, to entertain through Jan. 28. The group's or-

iginality and tonal quality have been extolled by, blase critics in Las Vegas, Reno and on the after-sunset-circuit in other entertainment spots.

Reduced rate admission tickets to the Riverside County Fair and National Date Festival at Indio can be obtained by writing to Indio P.T.A. Council, 45-638 Deglet Noor St., Indio. Dates are Feb. 12th through 22nd.



KIEKO TSUCHIYA

Nisei Dancer Back at ECC

Whether to continue her career as a dancer, following a major in architectural drawing or become a professional model is the perplexing problem of an El Camino College coed, Kieko Tsuchiya.

The Chicago-born coed, named Miss Gardena last summer, has adjusted to the comparative calm of campus life following a two-year tour as a professional dancer with the Keigo Imperial Dancers.

Accompanied by tape recordings of such customary Japanese instruments as the 13-string harp and bamboo flute, the dance troupe interprets traditional folk dances of Japan from the 13th Century to the present popular dances.

The group's finale is a Charleston routine which brings a twinkle to the eye of Miss Tsuchiya as she recalls the customary enthusiasm of her American audiences for the dance presentation.

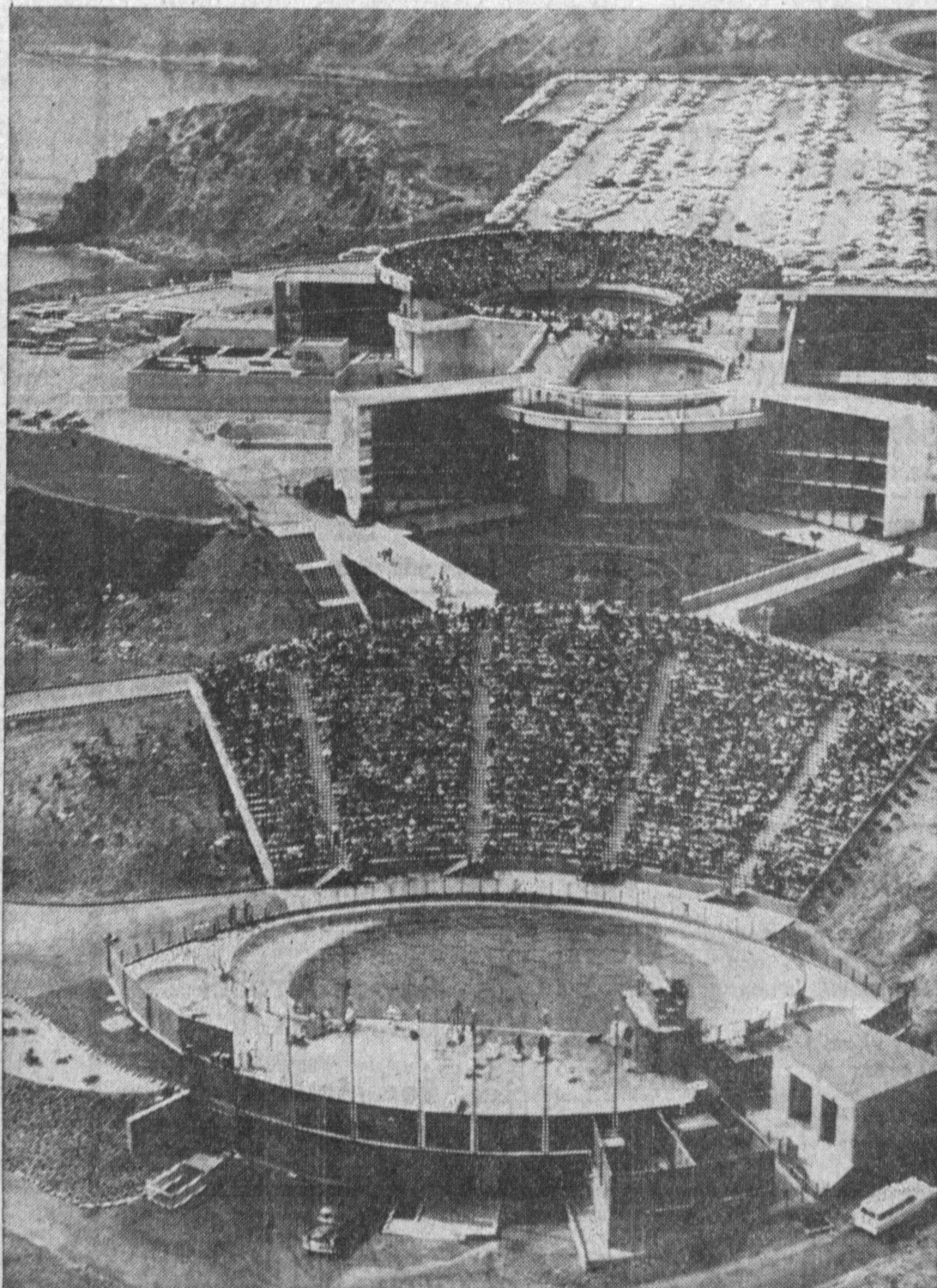
Excellence of the dance company's performance is attested

Inaugural Flight of T.A.I. Airlines to Connect Los Angeles Tahiti

A bachelor tour to the South Seas, with Tahiti the ultimate destination, is being presented by The Polynesian Restaurant in Torrance. The 14-day tour, departing May 10, will be aboard the inaugural flight connecting Los Angeles and Tahiti by T.A.I. Airline.

Accommodations with the French airline, which has established a new route to the South Seas, were secured by Pete Reitz of The Polynesian, who will personally conduct the tour to the land of seductive charm, the islands that excite the imagination of every traveler.

Three paradise islands comprise the itinerary, after a brief stop-over in Honolulu, said Reitz, who two months ago headed The Polynesian Restaurant's second annual tour to Hawaii, Bora Bora, Moorea and Tahiti will be visited during the two week "men only" jaunt. Flight space is limited and reservations are required by Feb. 1.



AERIAL VIEW of Marineland of the Pacific depicts the 3-Ring Sea Circus in the foreground featuring the new Sea Arena. On

top the oval Fishbowl and the circular Whale Stadium. Marineland is just seven miles to the south of Torrance.

Record Field for Road Race

Largest field of entries ever garnered in the history of the classic today was predicted for the 17th annual Palm Springs Sports Car Road Races, set for Saturday and Sunday, Jan. 23-24 on the desert spa airport course.

Lindley Bothwell, regional director of the sponsoring Sports Car Club of America, revealed that already entries are pouring in from all over the nation for the annual classic.

Entered to date are such drivers as Tracy Bird of Tucson in a Porsche; Randy Cowherd, Seattle, Porsche or Lotus; and the popular husband-wife team of Sam and Nora Taylor of La Puente, Lotus Mark II.

More than 750 entry blanks

were mailed last week, and Bothwell said that on the basis of response to date, the Palm Springs event should prove to be the finest yet.

Bothwell said that the event has the official approval and sanction of the Palm Springs Chamber of Commerce, and that the desert resort plans a huge celebration in conjunction with the racing card.

CRISSCROSE NATION

The new Interstate System of highways now under construction will crisscross the nation with controlled-access freeways connecting 90 percent of all cities of 50,000 or more population, reports the Automobile Club of Southern California.

Auto Insurance Rates Remain Unchanged

Automobile insurance rates for private passenger cars in California will remain unchanged for the time being, the National Bureau of Casualty Underwriters and the National Automobile Underwriters Association announced today, on behalf of their 200 affiliated companies.

While leaving liability insurance rates unchanged for private passenger automobiles, the NBCU announced changes in rates for commercial cars and garage risks buying the broad coverage. These rate revisions, effective Jan. 6, result in an average statewide increase of 10.7 percent for commercial cars and 25 percent for the garage risks.

DANCE
to the Music of the
Bel-Ayer Orchestra
SATURDAY NIGHTS
at the
AMERICAN LEGION HALL
1109 Border—Torrance
COCKTAIL BAR OPEN TO PUBLIC
Daily Noon to 2 A.M.
Sunday 12 to 8 P.M.
Hall Rental — FA 8-9726

Thursday, Friday, Saturday
John Wayne - Ricky Nelson
'Rio Bravo'
(Color)
—Also—
Steve Marlo
'The Young Captive'
ROADIUM
DRIVE-IN THEATER
Redondo Beach Blvd.
at Crenshaw
DA 4-2664

Torrance's Most Modern
Cocktail Lounge
DANCING PIANO BAR
RENDZVOUS
1876 TORRANCE BLVD.
PARKING IN REAR

Wonderfully BARBECUED TENDER
Chicken and WELL DONE Spare Ribs
COCKTAILS
Served in all 4 Dining Rooms
OPEN DAILY: SUN. 12 THURS. 11 A.M. to 11 P.M. FRI., SAT. & DAY BEFORE HOLIDAY 11 A.M.
BBO Pete
Members of Diners Club
OR. 8-9957
111th St. and Hawthorne Blvd. Inglewood

ENTRE NOUS
for • Distinctive • Dining
COCKTAILS FROM THE BURGUNDY ROOM
PACIFIC COAST HWY. and ROBERT ROAD
OPEN DAILY 11:30 A.M. TO MIDNIGHT
SUNDAY OPEN 9 A.M. SERVING BREAKFAST
NEV DAVIES AT THE ORGAN
TORRANCE
FRONTIER 5-7572

MONDAY FASHION SHOWS
EXOTIC FOOD
TROPIC DRINKS
ISLAND MUSIC
THE Polynesian
FRONTIER 8-1247
PACIFIC COAST HWY. AT THE FOOT OF PALOS VERDES HILLS
OPEN 5 P.M. DAILY

The Italian Kitchen
—Introduces—
PIZZA from 45c
• Beer and Wine
• Take Out and Dining Room
ITALIAN KITCHEN
1117 Crenshaw Blvd.
(Across from Lucky Mart.)
Torrance
FA 8-7694

COCKTAILS
The Branch Office
Open 4 P.M. daily
2320 Torrance Blvd., Torrance

Family Treat!
ALL YOU CAN EAT
\$2.15
CHUCK WAGON DINNERS
Cocktails ROAST PRIME RIB
SALADS GALORE SOUTHERN FRIED CHICKEN
Open Daily 6 A.M. to 2 A.M.
EAT WITH CHARLEY
1625 CABRILLO AVENUE
DOWNTOWN TORRANCE

Magnavox
EXCLUSIVE
IN DOWNTOWN TORRANCE IT'S
BAKERS
Direct Factory Dealer
1502 CABRILLO AVE.
FA 8-2778