



Dr. Kline is pleased to announce the opening of his new location at 1408 Cravens Ave. (Downtown Torrance) You are cordially invited to stop in and say hello and see our new spacious modern optometric facilities.

DR. A. F. KLINE
OPTOMETRIST

- Contact Lenses
- Frame Repairs (on the spot)
- Convenient Credit

• Scientific Eye Examination

• 24-Hour Service

• Our Own Laboratory for duplicating lenses (bring in your broken lens.)

DR. A. F. KLINE, Optometrist
1408 CRAVENS AVENUE FA 8-1946
(Free Parking Across the Street)



NEW CAR SHOWROOM OPENS—This is a comprehensive view of Bob Beaver's just-opened new-car showroom area at 931 Pacific Coast Hwy., Hermosa Beach. The new showroom allows much increased efficiency and more effective display of the sleek new line of 1960 Pontiacs.

New Showroom Proudly Opens

More than 150 new automobiles can be displayed at one time in a spanking new showroom area, Bob Beaver of Bob Beaver Pontiac said today.

Beaver said the new addition new expands his space to three city blocks of new and used cars. Combined with his excellent service facilities, Bob Beaver feels that he is in a most excellent position to serve his many customers from his showrooms at 931 Pacific Coast Hwy. in Hermosa Beach.

Use Press classified ads to buy, rent or sell. Phone FA 8-2345.

Hunting Seasons Are Nearing End

Time is running out on all current hunting seasons, reminds the Department of Fish and Game.

The season on quail, chukar partridge, cottontails and brush rabbits ends one-half hour after sunset today. There is no closed season or bag limit on jack rabbits.

The waterfowl hunting season ends at sunset on Friday, Jan. 8, statewide.

The season on hand-tailed pigeons ends at sunset on Sunday, Jan. 10.

The season on bear ends one-half hour after sunset on Friday, Jan. 15, excepting in Humboldt County where there is no closed season or bag limit on bear.

Stormy weather this past week brought a brief flurry of fair to good duck hunting on Salton Sea and along the Colorado River, but hunting has been generally slow for the past few days. The Wister unit of the DFG's Imperial Waterfowl Management Area has approximately 50 hunter vacancies for Saturday, Jan. 2, and 100 vacancies for Sunday, Jan. 3. Quail and chukar hunting is slow throughout Southern California, and no really good flights of hand-tailed pigeons have been reported so far in areas open to public hunting.

California's first major national horse show of the year will be presented concurrently with the Riverside County Fair and National Date Festival at Indio, Feb. 12th through 22nd. Afternoon performances are scheduled.

Book Editor Appointed to 'Press' Staff

"Books Once Were Men" — This is the humanist approach of Henri Front, newly appointed Book Review Editor of the Torrance Press.

In every page of every book, there is something of the man or woman who created that book; that work of study or imagination; more, there is something of all of us.

Readers of Henri Front's column will find new publications interpreted with this theme in mind. At the same time, his penetrating commentary has the backing of a sound literary education.

The holder of two degrees in literature, a B.A. and an M.A., Front currently completes the round of study and research leading to a Ph.D. in Literature at a Southland university.

He has acquired a firm reputation as a book reviewer in the South Bay.

This is in addition to his position as the Rabbi of Temple Menorah in Redondo Beach.

As a faculty member of the Hebrew Union College - Jewish Institute of Religion in Los Angeles, as vice-president of the South Bay Ministerial Association and as vice-president of the Torrance-Lomita Chapter of the National American Red Cross, Henri Front is equally adept. Further, the new Book Editor of the Torrance Press serves as Chairman of the Publications Committee of the Torrance Rotary Club and on the Board of the Key Men's Club of the United Jewish Welfare Fund.

During World War II, Henri Front gained an intimate knowledge of Okinawa, arriving as a chaplain with the Marine invaders.

He is married and has one delightful daughter.

Henri Front is a man of many parts — all of which you will like.

(For Today's Book Review, See Page 4-A)

DENTAL PLATES

REPAIRED AND RELINED WHILE-U-WAIT
GAS OR PENTATHOL
FOR EXTRACTATIONS AT THE SAME PRICE

18 MONTHS
TO PAY
•
FIRST
PAYMENT
FEB., 1960

DIFFICULT
CASES
WELCOMED
•
PENSIONERS
WELCOMED

COMPLETE DENTAL SERVICE
• X-ray • Partials • Fillings • Pyorrhea Treatment
OPEN EVENINGS AND SATURDAY—NO APPOINTMENT NECESSARY

DR. TARR
CREDIT DENTIST

FA 8-0250
For
Low Prices

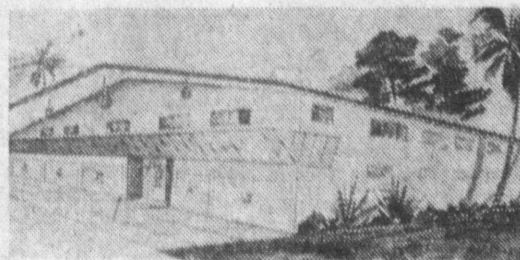
Member of the American Academy of Dental Surgeons, also member of the California Society of Dental Surgeons.
Modern Ground Floor Offices with ample parking and air conditioning for your convenience.

2418 TORRANCE BLVD., NEAR CRENSHAW • GROUND FLOOR

LUXURY AT LOW COST

MODERN
RESORT
LIVING

AT ITS FINEST
• Near two fine shopping centers
• Tropical landscaping
• Individual garages or carports with large storage space
MANAGER IN APT. 33 at all times



DEL AMO
GARDENS

3544 Garnet St.
Torrance

Phone
FR 3-3158

- 44-FT. HEATED AND FILTERED POOL
- WALL-TO-WALL CARPETING
- PRIVATE ENCLOSED PATIOS
- BUILT-IN RANGES, DISPOSALS
- INDIVIDUALLY CONTROLLED HI-FI
- 60'x136' CENTER PATIO

- 80' SUN DECK
- HUGE WALK-IN CLOSETS
- COMPLETE LAUNDRY FACILITIES
- 1-2 BEDROOMS, 1-2 BATHROOMS
- FURNISHED OR UNFURNISHED

Platters for your table

Platters for your turntable

Platters for decoration

The Thrift Twins say
"IT'S PLATTER-TIME AT
GLENDALE FEDERAL SAVINGS!"

PICTURED ARE GIFTS IN THE \$1,000 SAVINGS ACCOUNT CATEGORY

Take your pick of... **PLATTERS**

FREE when you open a savings account*... or add to your present one*

PLATTERS TO USE... PLATTERS TO AMUSE

JUST LOOK AT THE PLATTERS! Beautifully colored patterns of sculptured ceramic, glistening copper, brass or silverplate—platters to enhance the social enjoyment of family and guests, to add grace and beauty to your home.

WAIT TILL YOU HEAR THE PLATTERS! The tops in family musical entertainment—take your pick from the rewarding library of classics, toe-tapping jazz, swing, or Broadway's most popular show albums.

PICK YOUR PLATTERS FROM THE DISPLAY! These platters to use, platters to amuse, platters just for you to choose... are on display in each of Glendale Federal Savings nine offices.

***JUST OPEN AN ACCOUNT... TRANSFER YOUR ACCOUNT... ADD TO YOUR ACCOUNT...** in the amount of \$100 or more. Then take your pick from the display in three savings account categories—\$100, \$500, \$1,000 or more.

Only one gift to a customer... act now, for complete selection of platters as supplies are limited.

Record selections have been made for you by WALLICHS MUSIC CITY where you'll find the world's largest selection of records... over 15,000 records and albums to choose.

Los Angeles • Hollywood • Lakewood Village

**GLENDALE
FEDERAL
SAVINGS**
AND LOAN ASSOCIATION

Assets over \$290 million
Accounts opened by the 10th earn from the 1st.

NEW HIGHER RATE
(Starting January 1, 1960)

**"LOVE THAT
4 1/2 %**
paid
4 times a year

Each account insured to \$10,000.00

Platters and Profits For You

While you're enjoying the platter of your choice, your savings will be earning our new higher rate of 4 1/2% a year. So arrange now to transfer your savings without loss of current earnings, we will handle all the details. At Glendale Federal, your savings earn more... more often for you.

Offices in: EL MONTE • GLENDALE • STUDIO CITY • PACIFIC PALISADES • ARCADIA • MONTROSE • WESTWOOD VILLAGE • SAN PEDRO • LOMITA
112 W. Valley Blvd. 401 No. Brand Boulevard 12191 Ventura Boulevard 15215 Sunset Boulevard 100 South First Avenue 2320 Honolulu Avenue 1090 Westwood Boulevard 558 West Ninth Street 2033 Lomita Blvd.