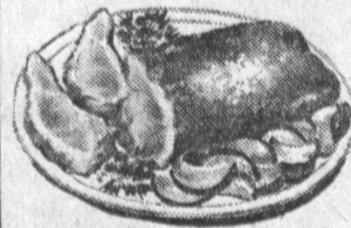


**HURRY! HURRY! HURRY!**  
**BIGGER FOOD BUYS!**



**C & H PURE CANE SUGAR**  
**5 LB. BAG 39<sup>c</sup>**



U. S. D. A. EASTERN GRAIN-FED BEEF  
**CHUCK ROAST 39<sup>c</sup> lb**

SEVEN-BONE ROAST..... **49<sup>c</sup> lb** | ROUND-BONE ROAST..... **55<sup>c</sup> lb**

BONELESS—DE-FATTED—TIED  
**BEEF ROAST 79<sup>c</sup> lb**  
 Meat You Can Eat With a Fork—No Waste

KRAFT'S VELVEETA  
**CHEESE 69<sup>c</sup>**  
 Large 2-lb. Pkg.

CHICKEN OF THE SEA  
**TUNA 23<sup>c</sup>**  
 No. 1/2 Can

PRINCELLA  
**YAMS 19<sup>c</sup>**  
 Large No. 2 1/2 Can

DURKEE'S OR C.H.B.  
**MAYONNAISE 33<sup>c</sup>**  
 LARGE QUART FREEZER JAR

Lean Boneless **STEWING BEEF 79<sup>c</sup> lb** | Tender Juicy **CHUCK STEAKS 49<sup>c</sup> lb**

SCOTT'S TOILET  
**TISSUE 25<sup>c</sup>**  
 3 FOR

SPRINGFIELD  
**PEACHES 19<sup>c</sup>**  
 SLICED OR HALVES  
 NO. 2 1/2 CAN



FARMER JOHN EASTERN, LEAN  
**SLICED BACON 43<sup>c</sup> lb**

Rath's Black Hawk  
**SMOKED PICNICS 29<sup>c</sup> lb**  
 5 to 7 lb. Avg.

HEINZ STRAINED  
**BABY FOOD 12<sup>c</sup> FOR 1<sup>00</sup>**  
 4 1/2-oz. Jar.....

Nabisco <b>CRACKERS</b> 1-lb. Pkg.	31 <sup>c</sup>
Pet Canned <b>MILK</b>	2 for 31 <sup>c</sup>
Snow's Clam <b>CHOWDER</b> 15-oz.	29 <sup>c</sup>
Swift's <b>PREM</b> 12-oz. can	51 <sup>c</sup>
Star Kist <b>TUNA</b> Chunk Style—No. 1/2 Can	33 <sup>c</sup>
Waxtix <b>WAX PAPER</b> 100 Ft. Roll	25 <sup>c</sup>

for CONVENIENCE  
 LOOK FOR THE WINDMILL  
**Van de Kamp's BAKERIES**  
**SPECIALS NOV. 19-22**  
 POULTRY 14 ozs. DRESSING 49¢  
 1-Layer CARAMEL PECAN CAKE ea. 79¢

**Holiday Special**  
 SPRY SPECIAL 3 LB. CAN ONLY 59¢  
 IMPERIAL margarine tastes like the "70¢ spread" YOU PAY ONLY 35¢  
 GOOD LUCK FREE TOWEL OFFER DETAILS ON PACKAGE YOU PAY ONLY 25¢  
 LUCKY WHIP Chocolate, Strawberry White GIANT CAN ONLY 49¢  
 Schilling HOLIDAY SPICES CINNAMON... SAGE... POULTRY SEASONING... NUTMEG...  
 Snowdrift **SHORTENING** 3-lb. can 89¢  
 Swift's Strained **BABY MEATS** 2 for 49¢

**Carl's FARM FRESH PRODUCE**  
 U.S. No. 1 CELLO BAG RUSSET **Potatoes 10 lbs. 39<sup>c</sup>**  
 Fancy Red Washington Delicious **APPLES 2 lbs. 25<sup>c</sup>**  
 EXTRA LARGE FUERTE **AVOCADOS 9<sup>c</sup> ea.**

OPEN DAILY 9 A.M. to 11 P.M.  
 SUNDAY 9 a.m. to 7 p.m.  
 Prices Effective Nov. 19, 20, 21  
 3 Sale Days  
 We Reserve The Right To Limit Quantities



**22905 SOUTH VERMONT AVE., TORRANCE**  
 1901 WILSHIRE BLVD. SANTA MONICA 508 N. DOHENY DRIVE BEVERLY HILLS  
 1526 E. FLORENCE BLVD. LOS ANGELES 2500 PASADENA AVE. LOS ANGELES 1500 WEST 6TH STREET, LOS ANGELES  
 3488 WEST 8TH ST. LOS ANGELES 12005 S. AVALON BLVD. LOS ANGELES

CALIFORNIA'S FINEST  
**Carl's FROZEN FOODS**  
 FREDELLIS **DINNERS 49<sup>c</sup> ea**  
 BEEF CHICKEN SWISS STEAK  
 MINUTE MAID **ORANGE JUICE 5 6-oz. Cans \$1<sup>00</sup>**

CALIFORNIA'S FINEST  
**Carl's DELICATESSEN**  
 OSCAR MAYER—7-OZ PKG. **ALL-MEAT BOLOGNA..... 31<sup>c</sup> ea**  
 MONTEREY—10-OZ. PKG. **JACK CHEESE..... 39<sup>c</sup>**  
 MANHATTAN—10-OZ. PKG. **COTTO SALAMI..... 39<sup>c</sup> ea**  
**Carl's LIQUOR**  
 VODKOFF **VODKA \$3<sup>89</sup>**  
 80 Proof—Full Quart