

J. R. Higgins Jr. Elected by Brick Manufacturers

J. R. Higgins Jr., 2217 W. 174th St., was elected 1959-60 vice president of the Associated Brick Manufacturers of Southern California at their annual meeting this week.

Higgins, vice president and general manager of Higgins Brick and Tile Co., is one of several prominent brick manufacturers located between San Diego and Fresno who compose the ABMSC.

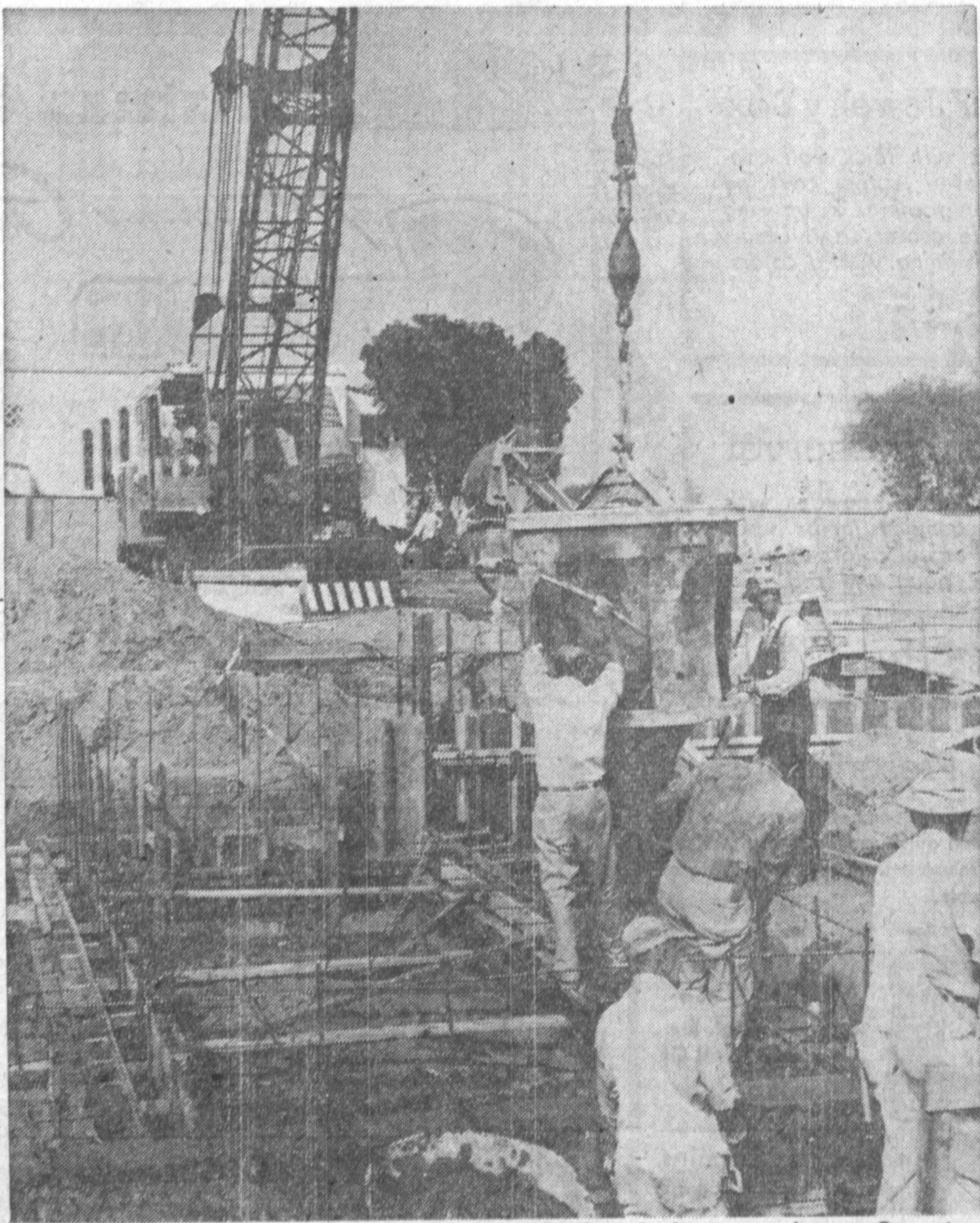
Other brick industry leaders named to key posts were H. C. Mathers, Van Nuys, president-treasurer; and John W. Rice Jr., San Diego, secretary.

State Gets Plea on Rosecrans

Supervisor Kenneth Hahn today said the state Highway Commission is being urged to cooperate with the county in elimination of one of the most serious traffic bottlenecks in the South Bay area — the narrow, two-lane railway underpass at Aviation Blvd. and Rosecrans Ave.

Hahn pointed out that Aviation is being widened and improved to master-plan standards between El Segundo Blvd. and Manhattan Beach Blvd., but that the improvement did not include the grade separation, since financing is not available.

Recently Rosecrans Ave was widened and improved from Inglewood to Isis Ave., almost to the intersection with Aviation.



PROGRESS—New state building to house employment department makes headway at Cravens and Engracia Ave., downtown. The ground was broken two weeks ago. Concrete foundations are poured here.

—Press Photos

Committee Heads Announced by Konya Group

Committee chairman for the Torrance-Konya City-to-City program were announced today by John Barton, chairman.

Barton said he is still searching for someone to head the following committees, professional men, service clubs, food, home, and host.

New chairmen are travel, Mildred Mittel; floral groups, Margaret Clark; design and department-store display, Fred Spangler; historian, Beverly Fossum; entertainment, Bernice Florence; film, Charles Deck; student exchange, Charles Deck; city government, Bob Jahn; labor, Abe Avolian; industrial, Jim Becker; retail, Lou Schlanger, Archie Grove, and Pete Rietz; recreation and sports, Marilyn Jensen; Red Cross, Henry Halverson; Konya Days celebration, Naomi McVey; publicity, Dick Fitzgerald; celebrity, J. A. Beasley; PTA, Marion Erving; arts and crafts, Ann Thomas.

Road-Tax Split Gives \$2,390,251 to L. A. County

The October split of highway users' taxes among the state, counties, and cities totaled \$30,248,509, state Controller Alan Cranston reported today.

Here is how the total was apportioned:

- \$19,986,459 to the state highway fund.
 - \$7,379,987 to the counties.
 - \$2,882,063 to the state highway fund for cities.
- This county's share of the total allocated to the counties was \$2,390,251.20, Cranston said.
- The total distributions increased by \$2,559,664 or 9.24 per cent over those for October, 1958. The amount distributed during October was composed of \$27,667,800 from the net gasoline tax, \$1,442,738 from the diesel-fuel tax, \$1,137,939 by transfer from the motor-vehicle transportation tax fund, and \$578 from miscellaneous sources.



OPENING—New regional office of county engineer is opened in Lomita by Supervisor Burton W. Chace as he nails sign on building at 1823 West Lomita Blvd. With him are John Lambie, county engineer, and Jack Lansing, regional engineer. The office will serve about 300 square miles.

FLOWERS

OPEN 7 DAYS A WEEK

HOURS: Torrance Store — 9 to 9 Redondo Store — 8 to 9

Windsor Florist

FA 8-1260

Corner Crenshaw and Torrance Blvd. FR 8-2244

1032 S. Pacific Coast Hwy.

Float Campaign Falling Behind

Torrance Chamber of Commerce officials this week announced promotion for the city's entry in the Tournament of Roses parade is lagging again.

George A. Bradford, float chairman, said more than 4000 letters were mailed to businessmen. The drive is still \$1000 short.

Bradford restated the chamber's policy of not asking the city to subsidize the float.

Chamber President J. H. Paget urged businessmen and citizens to send checks or pledges to the Chamber office.

Torrance Scouters Honored at Harbor Area Meeting

Six Harbor Area men were honored for outstanding service to the Los Angeles Council, Boy Scouts of America, and new officers were installed at the annual Harbor District meeting Wednesday at the San Pedro Hacienda.

Receiving awards of merit for outstanding services to boys were Ray Anderson, Carl Backlund, Charles Dresser, and William Roeder, Torrance; Wesley Waldorf, Rolling Hills; and William Beck, Gardena.

Installed were Lt. Cmdr. A. F. Benscheidt, Harbor district chairman; Fred Mill and Bill Dunlap, vice chairman; Paul Thies, commissioner; Wesley Waldorf, activities chairman; Joe Pearce, advancement chairman; William Dunlap, finance; Richard Hayes, leadership; and Paul Shinoda, organization and extension.

The annual meeting included a welcome by Los Angeles City Council President John Gibson, presentation of awards to top Scout leader by Milton Huber,

training chairman, music by a German band from the Long Beach Kiwanis Club, installation, presentation of awards of merit by Bill Stokes, and a talk by Jack McKeever, General Petroleum sales representative.

Backgrounds of the six top Harbor District Scouters are: Ray Anderson, 2013 Border Ave., Torrance, saw-shop proprietor and neighborhood Boy Scout commissioner; Carl Backlund, 2232 W. 230th St., Torrance, post-office employee and director of Scouting for the Lattin-Day Saints Church; Charles Dresser, 23270 Alliene, Torrance, student and district Explorer leader; William Roeder, 1759 Santa Fe, Torrance Internal Revenue employee and neighborhood commissioner.

Wesley C. Waldorf, 27614 Sundown, Rolling Hills, Property Management Corp. employee and activities commissioner for Scouting.

William Beck, 16112 Denker Ave., Gardena, Southern California as Co. employee and leader Explorer Troop 253-X.

Textured Walls Individualize Newer Homes

Textured walls and ceilings is the new approach to individualize properties, the Southern California Plastering Institute disclosed today.

American are individualists, an Institute spokesman declared, and they want an individual flair in their homes, store fronts and apartment buildings; they dislike sameness.

In addition to textures — ranging from combed to light, easy whirls — color used in stucco or plaster also permits building specialists greater opportunities to individualize.

Plain surfaces continue to be the style in most commercial or office building construction, researchers found, but where the personal touch is wanted, the demand is for colored stucco and textures.

Butcher Strike

(Continued from Page 1) there is a strike, Woodard said. "We are doing our darndest to get this thing settled and we don't want a strike any more than anyone else does. We met in negotiations yesterday until 1:30 a.m. Friday.

So far, they are far apart on all phases of the contract, wages, fringe benefits, hours, and working conditions.

A Food Employers' spokesman said union representatives are asking for more money than they originally proposed. The spokesman said negotiations are now almost at a complete breakdown, according to a union official.

The union strike deadline until today at midnight at request of Foodon.

A special meeting is being held today at 9 a.m. for all retail members at the Oil, Chemical and Atomic Workers Hall, 2100 W. Willow, Long Beach; 2 p.m. and 8 p.m. in Anaheim; and at the union office, 125 W. E Street, Wilmington, at 8 p.m.

APARTMENT HOUSES OK'D ON 214TH ST.

The Regional Planning Commission has amended its previous action on the application of Ziff Western Co. to permit apartment houses on property at 728 W. 214th St.

The commission has approved a two-story building on the south part of the property and a one-story structure on the north. The exception was granted on A-1 land.

Plans Ordered for Links at Southwest Park

Appointment of William Bell Jr., to prepare plans for a new pitch-and-putt golf course at Southwest Sportsman's park was announced this week by Supervisor Kenneth Hahn.

Hahn pointed out that the County recently obtained a five-year lease of two acres of land adjacent to Sportsman's Park from the Los Angeles Department of Water and Power, and that the course will be developed on this land. The land is leased to the county for \$100 a year.

The development is a continuation of Hahn's long-range program to improve Sportsman's Park, at Century Blvd. and Western Ave., into a recreational facility to meet the needs of a large area.

He pointed out that the park is located in the geographical center of his district and serves the people of Torrance, South Los Angeles, Inglewood, Lennox, Hawthorne, Gardena, and the South Bay area.

Western Lists Income

Net income of Western Air Lines, Inc., for the first nine months of 1959 was \$3,839,000, equivalent to \$3.73 a share, it was reported today by J. Judson Taylor, the airline's vice president and treasurer.

Lomita Opens New Office of County Engineer

The Palos Verdes - Centinela Valley office of the county engineer at 1823 W. Lomita Blvd., Lomita, was dedicated last week by Supervisor Burton Chace and County Engineer John Lambie.

The building is a one-story frame structure comprising 4100 square feet and will be occupied under a lease pending construction of permanent county facilities later.

The structure will provide more services than the old building. They will include the following divisions:

Building and safety, sanitation, construction and storm drain, industrial waste, mapping, and business management.

The area to be served is west of the Los Angeles river, containing 300 square miles.

NICKEL ALLOY USED IN 4000 B.C. Meteoric iron containing from to 26 per cent nickel was used for knives, axes and other implements as early as 4000 B.C.

NOW IS THE TIME TO INVEST IN REAL ESTATE

ALTER REALTY & INSURANCE

Torrance Builders and Realtors Since 1936

HEADQUARTERS

For the most complete selection of Desk and Office Supplies In the Entire Torrance & South Bay Area

200. TYPEWRITERS ADDING MACHINE FOR SALE—RENT OR REPAIR TYPEWRITERS, 1 BW TYPEWRITER FOR RENT, STEEL DESKS, McDOWELL & CRAIG, ROYAL CHAIRS, 200 STEEL FILING CABINETS, STEEL SHELVING AND PARTI-DUPLICATORS, CASH REGISTERS, NEW ELECTRIC ADDING MACHINES, SCHOOL AND CHURCH FURNITURE, MIMEOGRAPHS MACHINES, \$145, BLACK BOARDS, SAFES, COMMERCIAL STATIONERS, WILMER, WOLCOTT, OXFORD, WILSON JONES WE RENT, LEASE AND REPAIR EVERYTHING WE SELL.

Open Friday Nights Until 9 p.m.

Torrance Desk & Office Supplies

2061 TORRANCE BLVD. DOWNTOWN TORRANCE FA 8-7408

Five Bids Entered for Refinishing Exterior of Historic Banning Home

The Los Angeles City Recreation and Park Commission has received five bids for repainting and refinishing the exterior of the historic Banning Home in Banning Park, Wilmington, and the facility's milk house and reservoir patio.

Calway Builders, Los Angeles, \$5843; Signature Painting Service, Los Angeles, \$6756; Sun Valley Painting and Decorating Company, Sun Valley, \$7135; Edward H. Wopschall, Inc., Arcadia, \$5260; and J. P. Carroll Company, Los Angeles, \$7865.

Built in 1864 by General Phineas Banning, Wilmington's founder, the Banning Home is in the 16th District, represented by Councilman John S. Gibson Jr.

Torrance Soldier Finishes Course

Army Pvt. Thomas J. Watson, 19, son of Hazel E. Moesner, 22041 Island Ave., Torrance, has completed basic engineer training at Fort Belvoir, Va.

Watson entered the Army last July and completed basic training at Fort Ord.

Use Press classified ads to buy, rent or sell. Phone FA 8-2345.

Use classified Call FA 8-2345

FREE Thanksgiving TURKEYS

NO COST... NOBLIGATION

Just Come in and Register at **Southwood Estates** in Torrance

Visit our beautifully furnished 3 and 4-bedroom, family room, 2-bath model homes and register for a FREE TURKEY. Winner need not be present to win.

DIRECTIONS: From the intersection of Hawthorne and Torrance Blvd. drive west one mile to Torrance Blvd. to SOUTHWOOD ESTATES model homes. OPEN DAILY FROM 10 A.M.

WINDOW SHADES

CUSTOM MADE EXTRA LARGE IN OUR OWN WORKROOMS. 24-HOUR SERVICE

| | |
|--------------------|---------|
| 72" Wide, 36" long | 5.50 |
| 72" Wide, 48" long | 6.50 |
| 96" Wide, 54" long | \$11.95 |

With Your Roller

FIBER BAMBOO CAFE CURTAINS 24"x24" 79¢ pr.

Choice of Blue, White, Tan

TORRANCE PAINT AND FLOOR COVERING

1413 CRAVENS AVE. DOWNTOWN TORRANCE PHONE FA 8-5260

Now... the most liberal DENTURE OFFER of the year at **Dr. Campbell's**

Wait until Jan. 11 for your 1st small credit payment

No interest! No carrying charge! **WHY THIS OFFER?** My offices are less busy than usual the latter part of the year. To encourage you to come in now, instead of waiting, I am making it so easy that money is no problem. Enjoy your cash during holiday season and get new dentures now this care-free way. Two years to pay if needed.

THE PHONE THAT TELLS YOU your savings in advance TE 2-7115 for exact prices NOT ESTIMATES! or phone my office nearest your home

in San Pedro 704 S. Pacific

Dentures Come First

The Money Is Secondary

Dr. F. E. Campbell, DENTIST

Why You Can Depend On My Prices: We don't want you ever to expect lower prices than you get. To give you confidence we have the price permanently molded into each sample denture. You see the denture, you see the price, you choose.

FAST PLATE REPAIRS

See the **HOME OF THE WEEK** FEATURING BUILT-IN New Freedom Gas Kitchen

Model home now open ONE OF THE GREAT BUILDERS SERIES

CEDAR RUSTICS

212TH & NORMANDIE STS., TORRANCE

3 bedrooms, 2 baths, built-in gas range and ovens, acoustical ceiling, wall-to-wall carpeting, forced air heat, pullman counter in bathroom.

SOUTHERN CALIFORNIA GAS COMPANY