

WRAY'S Family RESTAURANT
15421 S. Crenshaw Gardena, Calif. OSborne 5-7344

"Just Good Food"

- Car Service
- Fountain Service
- Dining Room
- Food to Take Home
- Children's Menu

Open 5:30 a.m. - 3 a.m.
24 Hrs. Friday and Sat.

Open Golf Tourney

Advance entries indicated that the Gardena Valley-Western Avenue Open Golf Tournament from Nov. 12 to 15 will attract the largest number of amateur players in the history of the tournament, according to Earl Martin, pro at Western Avenue County Golf Course.

Martin said he has received entries from Joe Gallardo, of Glendale, who is Southern California Public Links Amateur Champion;

Larry Bouchey, from Alondra Park Course, who was formerly the Canadian amateur champ; and Neil Burges, from Alondra Park Course.

Among the late professional players entries are those of: Harry Bassler, Fox Hills; Walter Keller, Riviera; Willie Barber, Woodland Hills; Ralph Blomquist, Glendale; and Mike Austin, unattached.

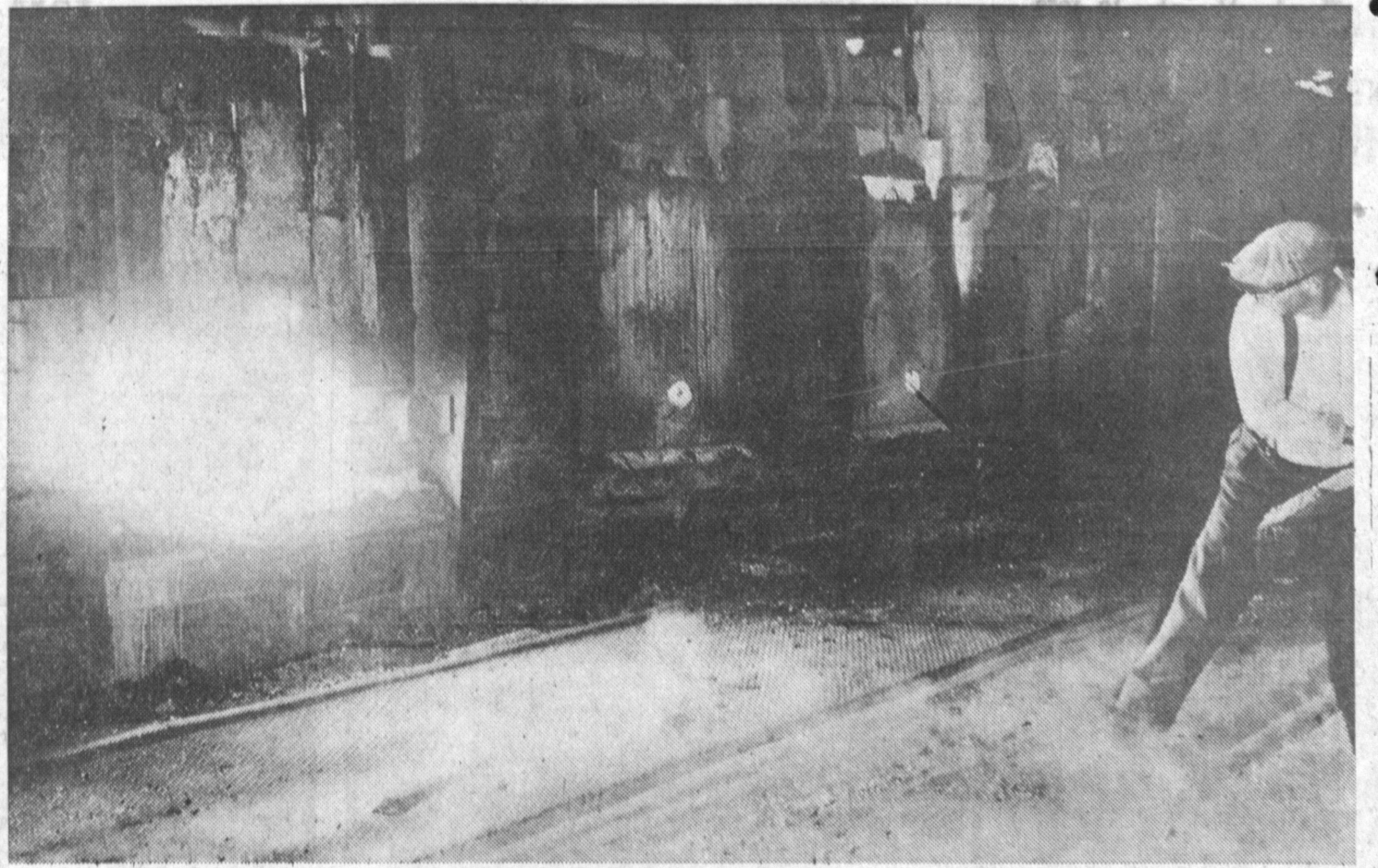
Martin predicted the 6th Annual Gardena Valley-Western Avenue tourney will attract 250 players for this year's \$6,000 purse.

Tickets for the tourney are on sale at Western Avenue County Golf Course pro shop, 12009 S. Western Avenue, Los Angeles. The tournament is being co-sponsored by the Gardena Valley Kiwanis Club and by the Los Angeles County Department of Parks and Recreation.

Square Dance Class for Beginners Forms

A new square dance club, The Square Links is sponsoring a beginners' class Fridays at 8 p.m. at Harbor Hills administration hall, Lomita.

Registrations are being taken by Andy Branagh, DA 6-7468.



ABLAZE—Open-hearth furnace in Torrance's U. S. Steel plant heralds back-to-work for men long on strike as temporary injunction forces plants to reopen. Here Bert Gowker tosses in metal to produce proper chemistry for steel to be poured. First heat was completed Monday after crews started back on jobs Saturday afternoon. Unless agreement is reached by Steelworkers and management, the walkout could be resumed and cool the furnaces again for another indefinite period.

—Press Photo

DENTURES

- IMMEDIATE DENTURES
- NEW MAGNETIC DENTURES
- EXTRACTIONS WITH SLEEP
- SAME LOW PRICES (We Arrange)
- NO MONEY Down 18 Months to Pay

REPAIRS . . . RELINES
While U Wait
Pensioners Welcomed
DIFFICULT CASES
No Extra Charge

OPEN EVENINGS AND SATURDAYS

DR. WHARTON
NO OTHER DENTIST IN OFFICE
1308 SARTORI DOWNTOWN TORRANCE ABOVE McMAHAN'S FURNITURE

FA 0-0707
FOR PRICES IN ADVANCE

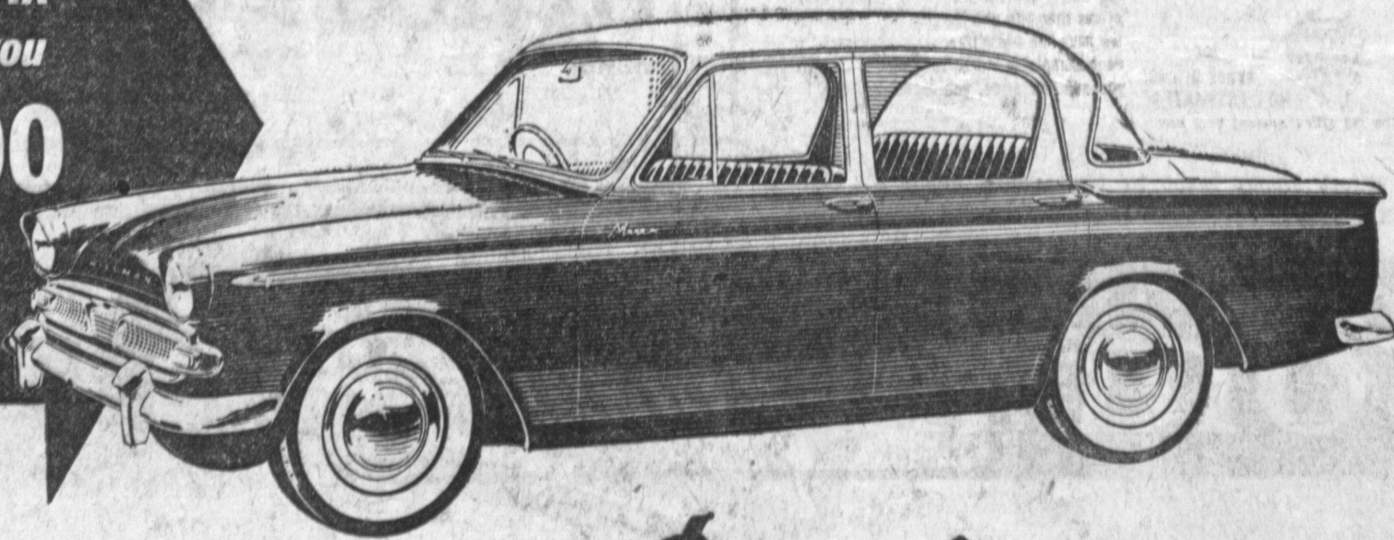
Let us show you why...

HILLMAN for '60

is still your BEST BUY in COMPACT CARS!

Here's the COMPACT CAR that saves you up to \$500

with luxuries and quality no other compact car can match!



MORE THAN JUST ONE MODEL TO CHOOSE FROM— SEDANS — CONVERTIBLES—STATION WAGONS

TIME-PROVED! Hillman—the true compact car—incorporates many years of time-tested British know-how in the building of economical engines and uni-body construction. The latter—only recently introduced in the United States—has been a Hillman feature for the past ten years!

QUALITY-PROVED! Open any door... note the heavy-gauge steel construction... the fine coachwork... the quality vinyl interior which is entirely washable and needs no protective seat covers. You don't have to be an expert to judge Hillman quality!

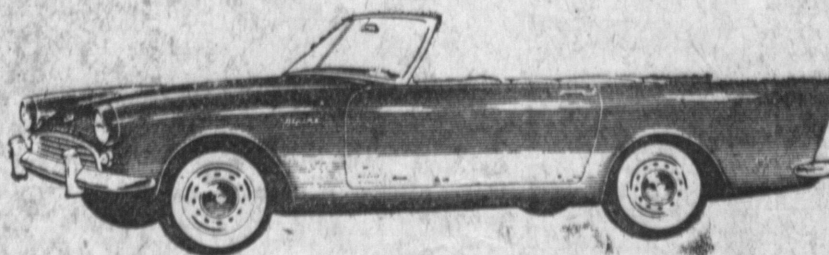
ECONOMY-PROVED! In Hillman, exacting design has produced a compact, high torque engine that cuts wasted energy to a minimum... delivers all the power you need while still allowing up to 35 miles per gallon!

PRICE-PROVED! Hillman can still save you as much as \$500 over other compact cars. If quality and price are factors in your thinking, you simply MUST see the new Hillman for 1960 and judge it for yourself!

IMMEDIATE DELIVERY ON ALL MODELS.

as low as **\$1699**

delivered at Los Angeles



Now you can see it!... Rootes' latest and greatest achievement—the sensational new

Sunbeam ALPINE SPORTS CAR

with brilliant new 1.5 litre Power Unit for speeds up to 100 m.p.h.

MANHATTAN MOTORS

New Owners have faithfully served Los Angeles County for 38 years

2301 SEPULVEDA BOULEVARD • MANHATTAN BEACH

FRontier 2-1141

associate dealer

FISHER IMPORTS

211 N. Western Ave., Los Angeles HOLlywood 9-3166

Rootes PREVIEW!

Now you can see the COMPLETE ROOTES LINE—embracing a Compact car for every purse and purpose—priced from \$1699 to \$3900! (West Coast P.O.E.)

HILLMAN • SUNBEAM • SINGER ALPINE SPORTS • HUMBER

All U. S. Steel Workers to Be on Jobs Today

All 728 striking union members of U.S. Steel's Torrance plant are expected to be back at work by 8 a.m. today with resumption of operations by the 22-inch mill.

Some 600 already have returned to their jobs following upholding of an injunction by the U.S. Supreme Court. U.S. Steel crews, among the first to resume operations, poured their first heat at 10:30 a.m. Monday after the plant reopened at 3 p.m. Saturday.

The furnaces had to be heated slowly to 2800 degrees, then charged with scrap and other metals to produce the proper chemistry for the steel.

The 12-inch rolling mill went back into production at 8 a.m. Sunday, turning out half-inch bars. First steel was shipped Monday.

Use Press classified ads to buy, rent or sell. Phone FA 8-2345.

A Dramatic Advance in EYE SAFETY for Workers

Eye damage from shattering glass is a hazard for thousands of shop workers and others who require vision correction on the job. But now a dramatic advance in eye safety has been made by the development of a crystal clear, UNBREAKABLE plastic that can be made in nearly any kind of prescription for eyeglasses, including bifocals. This remarkable new plastic is less than half as heavy as glass lenses, and it thus combines approved vision correction, safety and comfort.

WORKERS IN EYE HAZARDOUS TRADES and parents of rough and tumble youngsters should investigate the possibilities of these new plastic lenses. Not expensive; easy terms. Come in for a demonstration. 32 Year; in Harbor Area.

Open Friday Evenings Until 7 p.m. and Saturdays Until 1 p.m.

DRS. SOSS & KLINE
OPTOMETRISTS

1268 SARTORI

810 Avalon, Wilmington

FA 8-6602

37 Pine, Long Beach

SAVE \$230.07

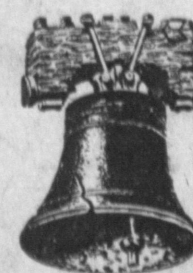
NEW REFRIGERATOR HOLDS 92 PACKAGES OF FROZEN FOODS ... 124 Pounds!



New NORGE "Big Freeze" REFRIGERATOR-FREEZER

NO MONEY DOWN BANK TERMS!

\$299⁸⁸ with Trade



Liberty Appliances

DISCOUNT PRICES . . . WITH SERVICE AFTER SALE
3445 Torrance Blvd. Phone FA 8-5410

In the big Paramount Center—Just West of Civic Center

Open 6 Days a Week, Friday 'Til 9

NO MONEY DOWN . . . EASY TERMS

LIBERTY IS THE LARGEST EXCLUSIVE APPLIANCE DEALER IN THIS AREA

IF YOU BUY THIS WEEK-END! REGULARLY \$529.95