

"LOOKING 'EM OVER"

With Mike Callas Jr.

IMPORTANT DECISION POSTPONED

The Los Angeles Coliseum Commission last week postponed a decision on what rental to charge the Dodgers next year for use of the Coliseum until Oct. 8.



When the Commission met last Monday, it put off a crucial ruling. The governing body was to decide whether the ex-Brooklyn club should be held to terms of its third year option.

That option, if you recall, would require Walter O'Malley to pay a flat 10 per cent rental of the Coliseum gate plus TURNING OVER ALL THE PROFITS FROM CONCESSIONS.

CONCESSIONS MEAN REAL LOOT

The last time this reporter talked with Walter, the ex-New York attorney indicated that if 1990 baseball were impossible at Chavez Ravine he would rather have his team cavort at Wrigley Field than give up the concession profits.

Nowadays it is not the gate that counts—it's Danny Goodman's show that makes the loot. Cokes, hot dogs and candy bars are not the only items labeled "concession." Programs, "charge" bugles, pennants, sweat-shirts and caps bearing the LA club monogram are also considered part of the take supervised by Goodman.

O'MALLEY SEEKING CONTINUANCE

Walter wants the Commission to continue the arrangement he has now, under which his organization paid \$100,000 a year rental, 10 per cent of the gate, and concession rights for only nine games.

The Dodger president would rather pay \$100 grand a year and the percentage quoted above than give up a penny of concession profits for 68 games.

RAMS A FACTOR

Ever since the Dodgers hit town they have been fighting to stick a shovel in rich Chavez Ravine real estate. Every true baseball fan knows each battle they waged.

Next month the Coliseum Commission must make a ruling. They must decide to give Mr. O'Malley his way or risk the loss of revenue—1987 total paid by the Dodgers exceeded \$289,000.

If they vote for the "transplanted National League club, they will be accused of coddling its baseball tenants. And what's worse, the Rams will certainly start to bellow the chant—"Why can't we run our own concessions?"

Pity the members of the Commission. Even after the World Series is over in October the Dodgers and the City of Los Angeles will still be talking Chavez Ravine and "concession baseball."

SMOKE CLOUDS FROM A YELLOW-BOLE

During the recent Cardinal series at the Coliseum waging in the press box had it at 2-1 that Stan Musial would retire before the winter months are over. Chief reasons being outside interests and age.

Sandy Koufax taking success with dignity, humbleness and gratitude. Even when Drysdale was winning he could never come close in comparison. . . . The Dodgers will renew Alston's contract for one year prior to the World Series in San Francisco. Brass feels he's well qualified regardless of where the club finishes the end of this month. Have you ever noticed how often the same question is asked the day's baseball hero by a well-known broadcaster?—"What kind of pitch did you hit for your homer?"

When Willy Mays was asked, after he hit one off Drysdale, we thought his answer would silence the broadcaster's use of it again. However, Willy's "I don't know" only spurred the chatterer to repeat.

Motorcycle Races

The West's premier motorcycle riders will cavort in the big Labor Day weekend sweepstakes program Friday night at Ascot Stadium. First race is set for 8:30 p.m., following time trials.

at 7 p.m.

The program has drawn a talented entry list of 90 riders. The show, kicking off the holiday weekend, is traditionally one of the big motorcycle events of the campaign at the Southside speedway.

ECC Votes 'War' on Rival Gridders

Warwhoops rang in the air over the football field at El Camino College this week.

Big Chief Norm Verry opened the Camino reservation and greeted 75 candidates for Warrior membership at the annual fall powwow. Result was a declaration of war on rival JC grid units.

Tribal leaders welcomed the prospective Warriors into the fold, and announced a schedule of two practice sessions daily until ECC tackles the alumni in an annual scrimmage Sept. 9 at Warriorville.

Dave Long, mainstay of the Camino offensive attack last season, leads the list of 11 returning lettermen.

Joining Long in the backfield will be a veteran line-up composed of returnees Ron Goodrich, Glen Kezar and Gene Williams.

Only Coach Doug Essick has to struggle through the search for starting talent at end without the benefit of an experienced man at this position.

Don Jurk, line tutor, greeted a host of fast, light and hard-hitting candidates for the forward wall posts. Under the Tribe system of belly-series runs and quick openers, it takes a lighter and quicker interior man to produce effective holes.

Reames May Star

Billy Reames, Bob VanCalcar, Bob Winters, George Halbeck, Bill Montgomery and Dan Brizolara are the returnees in the beef positions.

Reames, tabbed as a top notcher last fall, suffered a broken ankle in the first game of the year, and failed to see further action. This year the Warrior coaches expect Reames to fill the shoes of ECC's lone All-Metro player, Tackle Wayne Atkins.

Jim Wallace, first line center in '86, went on a vacation to Texas this summer, and hasn't returned. His status on the squad is still a mystery to Coach Verry.

However, rookie stars at various positions have given the mentors reason to skip over the loss of Wallace and a few other key men, such as Dave Stout, former stellar Mira Costa lineman who moved to Santa Monica, and Rudy Carvahall, Leuzinger seat-back now attending Cal.

Praises Jauregui

Without getting a look at his candidates in scrimmage, Coach Verry thinks Ed Jauregui, guard from North High, Don Bishop, Inglewood, center, and Sam Hard, Sentinel interior block buster, can bolster the Tribe up front.

San Diego State contributed a solution to Verry's center problem when Mike Garrula, Serra grad, transferred from the border college to the reservation. Garrula, a tough customer as gridders go, is a rugged individual who spoils for the body thumping a lineman has to dish out.

ECC's quarterback position shapes up into a long, long, long story. Besides having Long, spark-plug of last year's passing barrage, "new blood" at the slot is promising.

Verry Studies Passing
Ron Verry, Torrance High signal caller, possesses the footwork and think ability to develop into a first rate QB, however, Coach Ken Swearington thinks the young passer will have to work on his aerials to smooth out a high arching job into more of a bullet-style pass.

Returning after a three-year absence from the Camino scene, Jimmer Lindsay, letterman on the Tribe squad, hopes to challenge for the generalship position along with Long and Verry.

With men like Lindsay and Long coming back, Coach Verry offered the idea that the Camino backfield will be an experienced crew right from the beginning this fall and could prove to be the club's strong factor.

On the other hand, the eight-year veteran cautioned that the Indians can be no better than the talent they develop on the line, where the lack of experience is apparent. Even though the forward wall is bolstered by a crew of lettermen, it must be remembered that these men saw

PRESS Sports

Bowlers Wind up Season

Bolw-O-Drome's Harvey Aluminum ten-pin addicts wound up their summer kegling season with the Late Comers in the winner's circle, three games out in front of the second-place Maple Maulers.

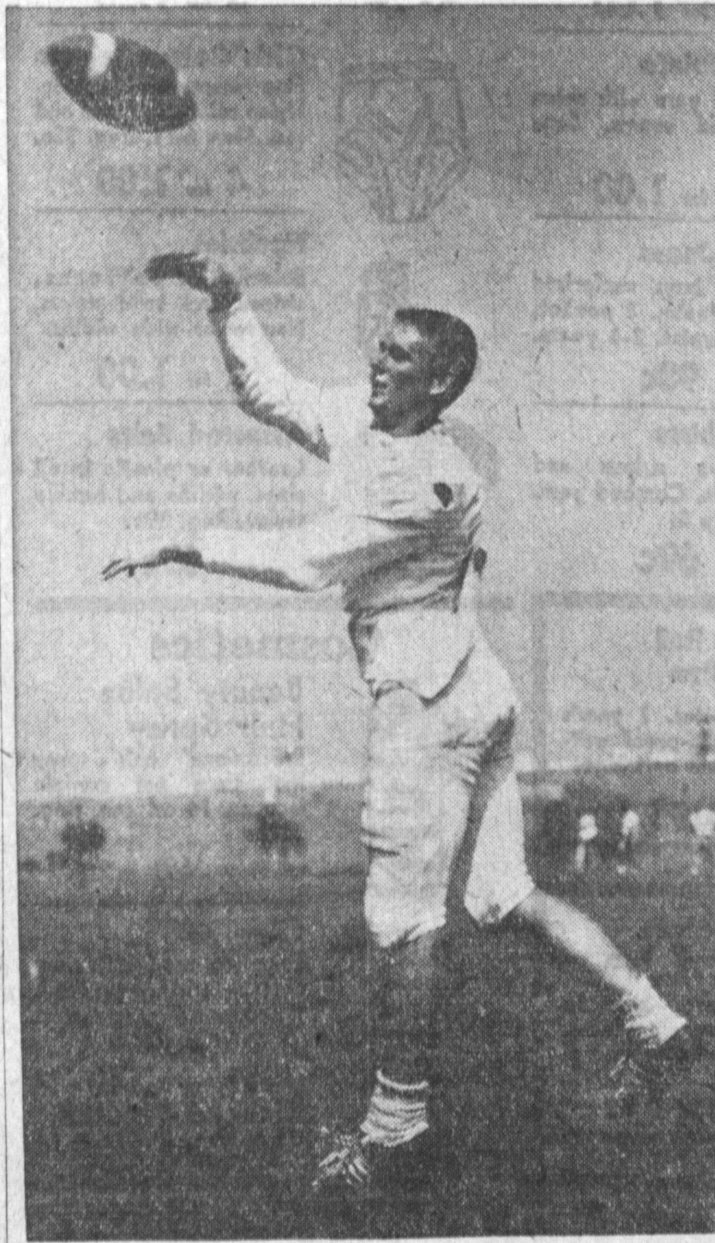
Phonics copped third, followed by the Outlaws, Renegades and Sputniks. Round-up hurler E. Speckman held out for the men's individual series topper with his whoping 625-645-670 three-game cluster as A. Blackman of the Phonics his sizzling 246-216-280 pitch latched onto the season's high game award.

The Outlaws' S. Ellis came through with a 458&177-635 tally for the gals' season series high, while Beatnik Kegler M. Williams copped female high-game honors with her 182&54-236 pitch. The 100's special "most improved bowler" award went to J. Iwata of the Maple Maulers for her 19-pin climb upward.

Police Hold Edge

Torrance Police held a slim one-game edge over the P. M. hurlers in the tight Monday Men's Commercial. The Lords and Central Body Works share third, only two out of the top notch, followed one down by the Mehring & Hanson quintet. B. Tabor and his 605&102-707 three-game set leads the season's individual series efforts, while V. Newton, King's Men kegger, and J. Kapper of the Hunt Rambler mob share the top spot in the high-game column. Newton scoring with 235&1&26-271. Kapper with 245&26-271.

The Ladies' Tuesday A. M.



UNCORKING A PASS—Ron Veres goes high in the air to fire a pass to an El Camino teammate in training exercise. Coach Verry says Veres needs practice in throwing bullet-passes to go with the high loopers he now does well.

extremely limited action and none played first string.

Taking everything into account, Verry ventured that this year's grid machine will be an improvement over the '86 squad, the degree to be determined by the rookie talent.

Class in Boating Offered

A fall class offered by the Coast Guard auxiliary will begin Sept. 14 in the Fern School Cafetorium, 2200 W. Carson. The class teaches prospective boaters to handle their boats in a safe manner.

It will be held each Monday night at 7:30 p.m. for a period of 12 weeks, and stresses small boat piloting and seamanship.

We're Now
Open Mon. & Fri. Till 9 P.M.
For Your Shopping Convenience
McMahan's Furniture Stores
Sartori at El Prado Downtown Torrance

ATTENTION BUILDERS, CONTRACTORS, HOME OWNERS
1000 new slab doors. Masonite and grained finishes. Many are pre-finished, bored and drilled, ready for installation.
\$2.99 for 2'0"x6'7" Masonite
ALSO YALE DOOR LATCHES AT GREAT SAVINGS
FINISH THAT PATIO NOW
Filon Fiberglass Panels A Grade—No Seconds Full Size Sheets 26"x8'
39^c Sq. Ft.
Also Available 10 & 12 Ft. Lengths

USED LUMBER
Dry, Seasoned, Top Grade
1x6 Sheathing 3/4 L. ft.
1x4 T&G Flooring 1/2 L. ft.
2x4 Redwood Posts 8 L. ft.
Need inexpensive Siding?
New 1x8 Pine Siplap Siding 6 L. ft.
For utility bldgs., sheds, cabins, etc.
30-Gallon Water Heater, now \$49.50
Glass Lined, Guaranteed
42" Steel Cabinet Sink \$59.95
New—with Fixture
COLOR BATH SETS
Toilet and basin in pastel colors. Less trim. \$39.95
NO DOWN — TIME PLAN LOANS — 36 MONTHS TO PAY
REPAIR — REMODEL — REBUILD
SHOP AT THE WEST'S LARGEST NEW AND USED BUILDING MATERIALS YARD. 16 ACRES LOADED WITH TREMENDOUS VALUES
5% DISCOUNT ON ALL MATERIALS WITH THIS AD
CLEVELAND WRECKING CO.
21932 S. AVALON (Just South of Carson)
Terminal 5-3152 Spruce 5-1982
WEEK DAYS 8 A.M. TO 5 P.M. — SATURDAY 8 A.M. TO 1 P.M.

● ANY MAKE
● ANY MODEL
IN YOUR HOME
\$4.95
ALL WORK GUARANTEED 90 DAYS
ASK ABOUT OUR COMPLETE COVERAGE SERVICE PLAN
TV SERVICE REPAIR
11 YEARS REPAIR EXPERIENCE
SAME DAY SERVICE
IF YOU CALL
FA 8-6606 BY 4 P.M.
BAKERS
1502 CABRILLO AVE. DOWNTOWN TORRANCE

100 Laps Set for Labor Day Races

A big 100-lap main event tops the holiday weekend card at the Gardena Stadium, Labor Day night, Monday, when the URA Midgits return to the one-third mile clay oval.

Allen Heath, Northridge, the one-armed flash, is rated as number one favorite to take top honors. Heath will be piloting the Hurd Automotive Special from San Diego in which he captured the 1958 United Racing Association Championship.

Rated as a strong favorite also is Don Cameron of La Mirada. Cameron, who was the 1957 URA Champ, will be out for his second 100-lap win of the year. Cameron captured the 100-lapper on Memorial Day night.

FISHING REPORTS

REDDO: 154 passengers on five boats caught 194 barracuda, 356 bonito, 48 yellowtail, seven halibut, 12 rock fish. On the barges, bonito, halibut, barracuda and yellowtail.
LONG BEACH (Pacific Landing): Five boats with 158 passengers landed 914 barracuda, 176 yellowtail, 57 bonito and 145 miscellaneous.
SAN PEDRO (Norma's Landing): Eight boats with 254 passengers landed four bluefin tuna, 221 barracuda, 236 yellowtail, 289 bonito, two white sea bass, 10 halibut, 196 bass, 11 rock fish and 423 miscellaneous.
SAN PEDRO (22nd Street): 5 boats, 64 anglers, 36 bluefin tuna, 176 yellowtail, 132 barracuda, 58 sea bass, 208 bonito, 117 yellowtail, 132 miscellaneous.
LONG BEACH (Pierpoint): Nine boats, 870 passengers, fishing Horseshoe Kelp and Catalina; 289 yellowtail, 113 barracuda, 1 bluefin tuna.

DID YOU KNOW by Ken

ENOUGH PAINT WAS USED BY AUTO REPAIRMENT LAST YEAR TO PAINT THE QUEEN MARY 6000 TIMES!
Over six million gallons of auto lacquer and enamel are used to refinish damaged cars. Damage to you is costly, if you're not adequately insured. Ask your agent how little it costs to get top-notch protection with State Farm.
JACK SMITH
1715 CABRILLO, TORRANCE FAirfax 8-3803
STATE FARM MUTUAL
AUTOMOBILE INSURANCE COMPANY
Home Office: Bloomington, Illinois 88-87

YOUR SAVINGS BUILD YOUR FUTURE AND YOUR COMMUNITY
...when you save at Glendale Federal Savings

Your savings dollars help build homes and industry... In the Harbor-Peninsula area
Glendale Federal was founded to encourage thrift and home ownership in Southern California. And one strict Glendale Federal policy is to use the savings of a community to help build that same community. So you can be sure that when you open a Glendale Federal Savings account, you're not only investing in your own future security... you're supplying the funds to help your home town grow.
Because your Glendale Federal Savings account earns more — 4% a year paid every three months — your savings grow faster... your future grows brighter. And, because you save at Glendale Federal, your community grows better!
Open an account today and plan for the future... your own... and your community's
GLENDALE FEDERAL SAVINGS AND LOAN ASSOCIATION
Formerly First Federal Savings of San Pedro
SAN PEDRO OFFICE: 556 West Ninth Street
LOMITA OFFICE: 2333 Lomita Boulevard
ASSETS OVER \$275,000,000
LOVE THAT 4%
4% current rate per year Paid 4 times a year
Each account insured to \$10,000.00
OFFICES IN • GLENDALE • STUDIO CITY • PACIFIC PALISADES • ARCADIA • MONTESE • WESTWOOD VILLAGE