

DINNER AT MARINELAND
Dining with friends at the Marineland Restaurant in Palos Verdes, where they recently enjoyed the music of Rosy McHargue's Dixieland Band in the "Porpoise Room," were Mr. and

Mrs. John Woznick of Torrance. Guests in their party included Mr. and Mrs. George T. Lester of Hollywood Riviera and Mr. and Mrs. Alan Lesneki of Torrance.

WRAY'S Family RESTAURANT

15421 S. Crenshaw
Gardena, Calif.
OSborne 5-7344

"Just Good Food"

- Car Service
- Fountain Service
- Dining Room
- Food to Take Home
- Children's Menu

Open 5:30 a.m. - 3 a.m.
24 Hrs. Friday and Sat.

Now Appearing in the Fun Room

The Barbara Neece Trio

DANCING NIGHTLY

Monday Thru Saturday 1:30 a.m.

40
LANES

BOWL WHERE YOU SEE THE
MAGIC TRIANGLE

OPEN
BOWLING DAY
AND NIGHT

COFFEE SHOP OPEN 24 HOURS

BOWL-O-DROME

COOLED BY ELECTRIC REFRIGERATION
WESTERN AT 220th FA 8-3700, SP 5-1326

DENTURES

• IMMEDIATE DENTURES

• REPAIRS... RELINES

• NEW MAGNETIC DENTURES

• Pensioners Welcomed

Extractions with Sleep

SAME LOW PRICES
(We Arrange)

OPEN EVENINGS
AND SATURDAYS

NO
MONEY
Down
18 Months
to Pay

DR. WHARTON
NO OTHER DENTIST IN OFFICE

1308 SARTORI DOWNTOWN TORRANCE
ABOVE McMAHAN'S FURNITURE



DR. WHARTON
Member California
Society of
Dental Surgeons

FA
0-0707
FOR PRICES
IN ADVANCE

Police Guard Four City Banks in Robbery Scare

Torrance police threw up a silent but watchful guard around four city banks Monday after a telephone caller warned of an imminent robbery.

Two branches of the Bank of America, and a branch of both the California and First Western were staked out by police throughout the afternoon and early evening.

When no robbery was attempted, the guard detail was called off.

Anonymous Caller

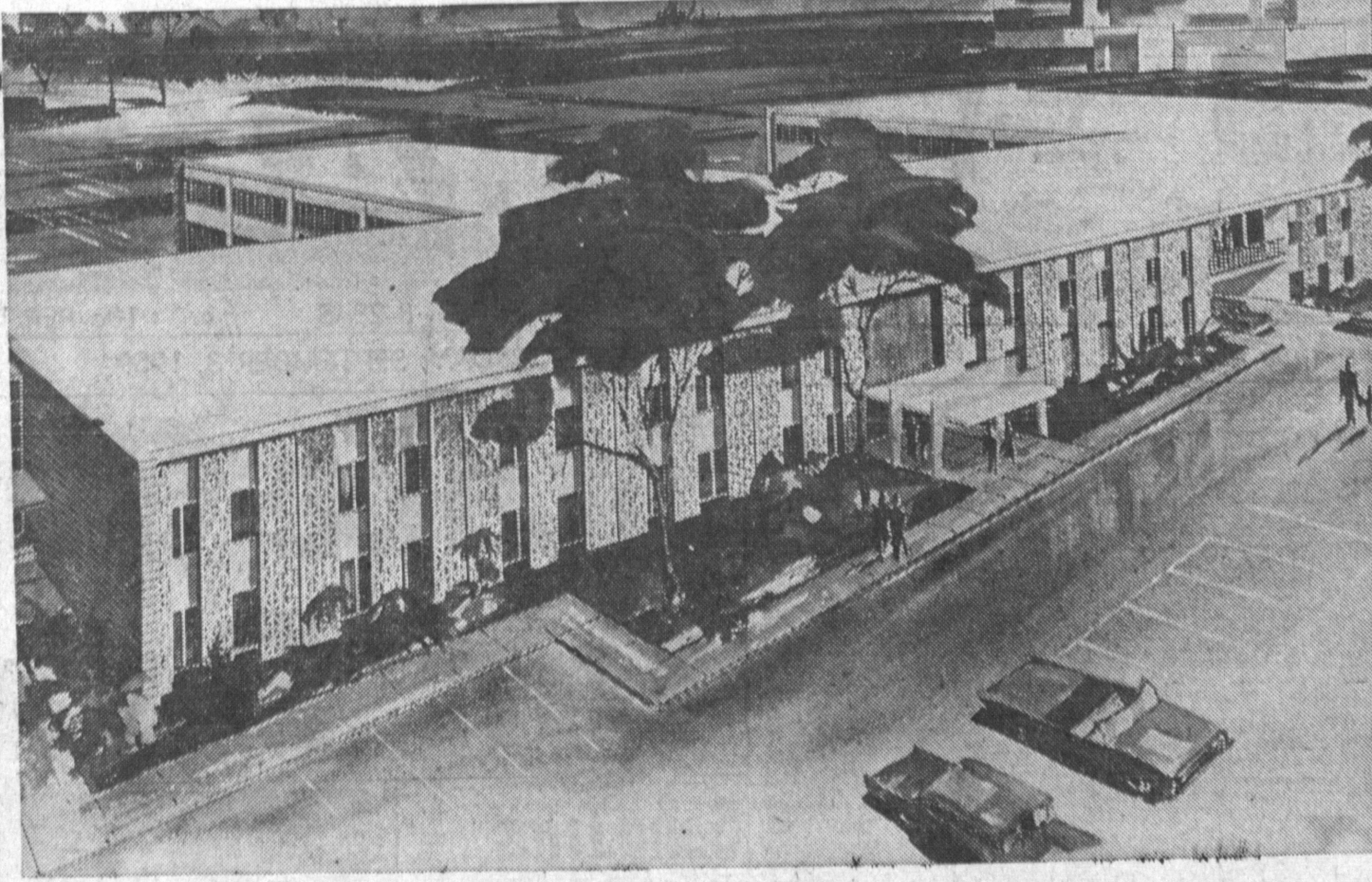
According to Det. Ralph Walker, an anonymous young woman called the Sartori Bank of America on a Fairfax line, told the operator that "the bank will be held up this evening," and hung up.

The bank's operations officer, Ed Taylor, reported the call to Police Sgt. Hamilton, and police were dispatched to the scene.

Although the call may have been that of a crank, Walker says the police could take no chances that it was not a genuine warning.

Summer Instruction Ends

Instructional swimming program at Benstead Plunge ends tomorrow, according to Allen E. Pell, activity leader. The new fall swimming schedule will begin on Sept. 10.



DEL AMO MEDICAL CENTER—New medical facilities, being constructed at Sepulveda and Hawthorne Blvd., will serve South Bay communities. First phase of the building is scheduled for

Second Phase of Del Amo Medical Center Is Announced

Plans for a "twin" to adjoin the Del Amo Center Medical Building now under construction were announced recently.

The second phase of the unit will be an exact replica of the 32,500 square foot project now underway at Hawthorne Blvd.

Speaking for the doctor's corporation composed of 20 South Bay doctor's and dentist stockholders, Gene Voorhes, legal counsel, states that the two million project is the result of surveys indicating an immediate need of local medical facilities.

The proposed structure will serve Torrance, Redondo Beach, Hermosa Beach, Lomita, Hawthorne and the Palos Verdes Peninsula.

Convenient to doctors practicing at the Torrance Memorial

Hospital, Riviera Hospital and the Little Company of Mary Catholic Hospital, the Del Amo Center Medical Building will feature individual office suites for 50 doctors and dentists.

According to Coldwell, Banker & Company, exclusive leasing agents for the buildings, demand for space in the first phase of the center has been so great, it was necessary to make preparations for the establishment of the second phase of the master plan prior to the anticipated schedule.

The 65,000 square foot project was designed by the Long Beach architectural firm of Jones, Lockett and Poper, A.I.A. and will be of contemporary design. Adjacent parking for over 400 automobiles is planned allowing an 8 to 1 parking ratio.

Construction on the second phase of the Del Amo Center Medical Building will commence on 1 July, 1960, proposed completion date of the first phase.

Buy College Books Early, Warns Director

Some 11,200 potential students of El Camino College will require from one to eight text books each when classes open Sept. 14.

This prediction and an ominous prophecy were elicited today from Marl F. Sloan, director of student personnel, on the local campus.

The prophetic proclamation envisions opening day book store

lines as long as a country dozen of blocks and unfilled seats of book purchasers in classrooms manned by ruffled instructors ready to drop the unprepared from lengthy roll call lists.

"Be good scouts and 'Be Prepared,'" the college administrator cautions students. The book store will be open daily, Monday through Friday from 8 a.m. to 8 p.m.

"Those who consult book lists now posted in the campus facility will avoid missing classes, standing in insufferably long and hot September lines and risking the possibility of early sell-outs of some texts," Sloan advised.



Publication office at 1406 Cravens Ave.
Torrance, California. Plant at 20346 So.
Hawthorne Blvd., Torrance, California.

Established April 18, 1949
Published Semi-Weekly Thursday and
Sunday. Entered as second class matter
Oct. 8, 1957, at Post Office, Torrance, California,
under act of March 3, 1879.
Adjudicated a legal newspaper by Superior Court, Los Angeles County, Calif.
Adjudicated Decree No. L. B. 23248, April 8, 1958.

Office: 1406 Cravens Avenue
Torrance, California
Plant: 20346 S. Hawthorne Blvd.
Torrance, California
Telephone: FAirfax 8-2345

W. R. Zapas, Publisher
W. E. King, General Manager
Kurt Lieberman, Managing Editor

Subscription Rates
(Payable in advance)
Carrier Delivery 45c per Month
Local and Out-of-Town, per Year \$12.00
All manuscripts submitted at owner's
risk. The Torrance Press can accept no
responsibility for their return.

Use Press classified FA 8-2345.

HARBOR DRIVE-IN THEATRE

September 3, 4, 5
Doris Day - Jack Lemmon
Ernie Kovacs
'It Happened
to Jane'
in Eastman Color
Susan Hayward - Jeff Chandler
'Thunder in the Sun'
Technicolor

September 6, 7, 8
'Rally Round
The Flag, Boys'
Starring Paul Newman
Joanne Woodward
Joan Collins - Jack Carson
Color - CinemaScope
'The Hangman'
Robert Taylor - Tina Louise
Fess Parker - Jack Lord

STADIUM

Wednesday Thru Saturday
Mat. Sat. & Sun. 1 P. M.

Walt Disney's
'TONKA'
Starring Sal Mineo

Also
'Adventures of
Tom Sawyer'
Both in Technicolor

Sunday, Monday, Tuesday

CLIFTON WEBB in

'Remarkable
Mr.
Pennypacker'

Also

SANDRA DEE in

'GIDGET'

Matinee Labor Day 1 P. M.

GRAND

Phone FAirfax 8-6000

Friday, Saturday, Sunday

GREGORY PECK in

'PORK CHOP
HILL'

Also

DEBBIE REYNOLDS in

'THE MATING
GAME'

**48 Square Yards
OF TOP QUALITY
Wall to Wall Carpeting**

COMPLETELY INSTALLED

Phone
FAirfax
8-2778
FOR FREE
ESTIMATE

100% ACRILAN
By Bigelow... 48 sq. yds.,
completely installed!
\$4.48 A WEEK
\$537⁰⁰
7 deep textured pile decorator
colors from which to
choose.

**100% DuPont
NYLON CARPET**
48 Square Yards
Completely Installed!
\$3.64 a Week
\$424⁰⁰
Guaranteed for 5 years! Beautiful
deep pile or frize in choice
of 6 colors.

**Bigelow
ALL-WOOL**
48 Square Yards
Completely Installed!
\$3.79 a Week
\$439⁹⁵
Beautiful popcorn textured carpet
in your choice of 6 new
decorator colors.

**Solution Dyed
VISCOSE**
48 Square Yards
Completely Installed!
\$2.15 a Week
249⁹⁵
5 Colors in tweeds to choose
from. If budget is a problem,
this is your answer!

Our Price Includes Everything

- 50-oz. Padding
- Expert Workmanship
- Tackless Installation
- Door Metals
- Labor & Materials
- Hand Sewing

1502 CARRILLO
Downtown Torrance

Phone FA. 8-2778

Open Monday and
Friday Evenings 'til 9

BAKERS

NO MONEY
DOWN
36 MONTHS
TO PAY

YES— If you live in the Torrance area, your floor plan
will require approximately 48 square yards of carpeting.

NOT— 33 1/2 or 40 square yards that so many stores
advertise as being average. Baker's advertises a price that is realistic.
That is, a price including carpeting, labor, 50-ounce padding
and chrome door metal stripping for 48 square yards which is
about your required yardage.



399 bal oxford
4-10 Children's sizes too.



399 TO 499
Goodyear welt.



299 12 1/4-3
333 4-11
A Karl's classic
for children and growing
girls. Black & white,
brown & white, all white.
N.M. widths.



boots-
boots-
boots-
399
Little boys'
To Men's sizes
599
Sturdy desert boot
with bouncy crepe sole
in grey or dirty buck.



jr. executive
299
8 1/4-12 1/4
Sturdy, handsome.
In brown or black.



miracle hyde 366
388 Boys' sizes
2 1/4-6
Men's sizes
6 1/4-12
Ridge-rubber
sole outsole.
Black or brown.



big selection
girls' dress flats 199 TO 399
newest styles
school handbags 199
wide variety girls'
loafers-oxfords 399 TO 499
boys' girls'
flexible cotton anklets
4 prs. 100

TREAT 'EM TO KARL'S
and they'll skip back to school...



KARL'S SHOE STORES

In Downtown Torrance
281 Sartori St. in 190th St.
Shopping Center, 5016 W.
90th St. Open Daily 9-6
a.m.—Friday 'til 9 p.m.