



FOOD GIANT

4 BIG SALE DAYS
THURS. thru SUNDAY
August 27, 28, 29, 30
Limit Rights Reserved

IT'S EVERYBODY'S FAVORITE!

USDA CHOICE

STEAK

U.S.D.A. "Choice" Steer Beef

RIB STEAK

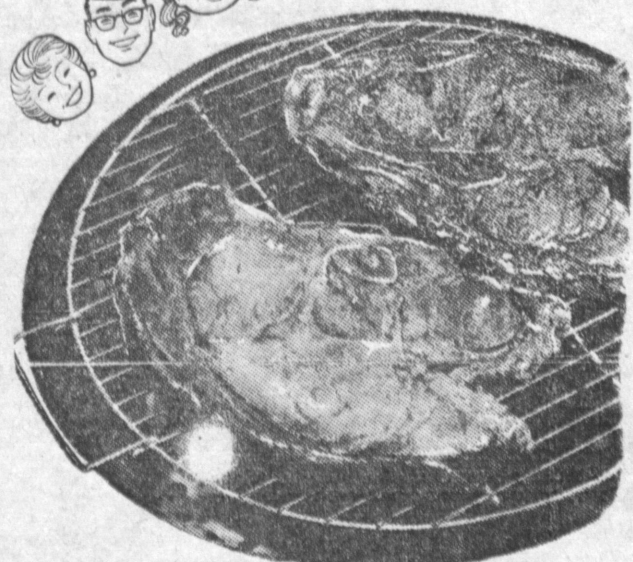
EXTRA VALUE TRIM

89

U.S.D.A. "Choice" Steer Beef

CLUB STEAK

98



What better treat than a tender steak sizzling on your barbecue. Our Steaks are all USDA "Choice", specially selected for tenderness and flavor and aged to the peak of eating perfection. And of course, like all Food Giant meats, they are trimmed of excess waste BEFORE weighing. We think you'll agree these are the finest.

U.S.D.A. "Choice" Steer Beef Steaks

Porterhouse or T-Bone Excellent Value **\$1 09^c lb**

Boneless Top Sirloin Tender Juicy **\$1 29^c lb**

FILLET MIGNON The Finest **\$1 79^c lb**

FOLGERS COFFEE

55

1-LB. CAN

Freshly Ground

ALL GRINDS

Assorted Flavors

JELL-O

3 19

Reg. Pkgs.

Smooth Or Nutty

LAURA SCUDDER

PEANUT BUTTER

Large Jar

39

CREME PAK or BIG PAK

Ice Cream

1/2 GAL. CTN.

49

DEL MONTE • Sweet Tender

GREEN PEAS



2 25

Tall 303 Can



F&P FRUIT COCKTAIL

3

LARGE 10. 2 1/2 CANS

Look what you can do with fruit cocktails... sparkling salads, delicious desserts. Add color and variety to your meals.

FARM FRESH PRODUCE

RUSSET • For Baking

Potatoes

10 39

lbs. in cello bag

Luscious • Green Fleshed

Honeydew Melons

5

RED • RIPE • SLICING

TOMATOES

2 25



VET'S

DOG FOOD

16

Tall No. 1 Cans

GIFFORD • Mammoth, Rippe

PITTED OLIVES Tall No. 1 Can **29^c**

FRENCH'S • Quick & Easy

INSTANT MASHED POTATOES 7-Oz. Pkgs. **29^c**

BEE • So Good

PURE BLEND HONEY 5 LB. CAN **89^c**

SONNY BOY • Price Includes "10 Off" Label

MILK AMPLIFIER 22-Oz. Jar **45^c**

KITTY QUEEN • Famous

CAT FOOD Chopped Liver Or Kidney 8 6-OZ. CANS **\$1**

KOSHER STYLE CORNED BEEF BRISKET

Boneless Extra Lean

59

Delicious Flavor

OCEAN GARDEN GULF CAUGHT SHRIMP

Frying Size

69

5-lb. Box \$3.39

GRAND DUCHESS • Flash Frozen

BEEF STEAKS 10-oz. Pkg. **49^c**

MORRELL'S PRIDE • Gr. A

SLICED BACON 1-LB. PKG. **49^c**

MAJESTY BRAND • Imported

DANISH SLICED BACON 1-LB. CAN **59^c**

CERTI-FRESH • Quick Frozen • Fillet

OCEAN PERCH 1-lb. Pkg. **45^c**

OSCAR MAYER • Thick-Sliced

SLICED BACON 2 -LB. PKG. **98^c**

Orange Juice

Cool and refreshing... a tall glass of orange juice every morning starts the day right!

5

6-oz. Can

GOLDEN CREME • Creamed or Farmer Style

COTTAGE CHEESE PT. Ctn. **21^c**

MA PERKINS • Red, Ripe, Wonderful

CALIF. TOMATOES 6 Lge. No. 2 1/2 Cans **\$1 00**

MA PERKINS • In Tomato Sauce

PORK & BEANS 6 Lge. No. 2 1/2 Cans **\$1 00**

QUEEN'S PRIDE • Superb Quality

FACIAL TISSUE 6 300 Sheet Pkg. **\$1 00**

DELICATESSEN

FOOD GIANT • Skinless • All Meat

FRANKS 1-lb. Pkg. **49^c**

Grand Taste • By Piece

BRAUN-SCHWEIGER **59^c**

WISCONSIN • Mild

CHEDDAR CHEESE BY THE PIECE **49^c**

LIQUOR and TOBACCO

8 YEARS OLD • "Doyle Springs" Straight

BOURBON WHISKEY Excellent Quality And Character FULL FIFTH **\$3 09**

80 PROOF • NIKOFF

VODKA Full Fifth **2 79^c**

SONATA • Sunny California

SAUTERNE or BURGUNDY WINE • Full Gal. **\$1 29**



FOOD GIANT

HAWTHORNE
423 S. Hawthorne Blvd.
at 132nd St.

MANHATTAN BEACH
2400 Sepulveda Blvd.
at Marine

SOUTH TORRANCE
Highway 101
at Hawthorne Blvd.

NORTH TORRANCE
4848 W. 190th St.
at Anza