



FOOD GIANT

4 BIG SALE DAYS

Thurs.-Sunday August 20, 21, 22, 23

U.S.D.A. "CHOICE" • ALL CENTER CUTS

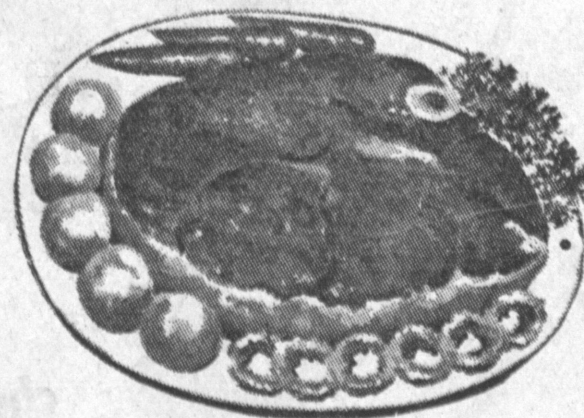
FABULOUS BEEF SALE

U.S.D.A. "CHOICE" STEER BEEF • BEST CENTER CUTS

ROUND STEAK

U.S.D.A. "CHOICE" SHORT RIBS EXTRA LEAN **35^c lb.**

69^c lb.



Lots of hearty eating meat here! Juicy steer beef, Extra-Value Trimmed to give you more meat for your money! Just another way Food Giant helps you stretch your meat dollar!

USDA CHOICE

OUR OWN BETTER MADE **GROUND BEEF**

Once You've Tried It You'll Be Convinced **39^c lb.**

TOPS FOR YOUR BARBECUE **GROUND CHUCK** 59^c lb.
THE VERY FINEST • LEAN **GROUND ROUND** 69^c lb.

U.S.D.A. "CHOICE" STEER BEEF • COMPLETELY WASTE FREE **BONELESS SWISS STEAK** 69^c lb.

ARMOUR'S STAR • FLASH FROZEN **JR. TURKEYS** 4 to 8 lb. Avg. **39^c lb.**

Roast Rump 69^c lb.

U.S.D.A. "CHOICE" STEER BEEF SHORT CUT **Rib Steaks** 79^c lb.

FARMER JOHN • EASTERN • GRADE A **SLICED BACON** 1 LB. PKG. **49^c**

CERTI-FRESH • FROZEN 14-OZ. Family Pak **FRIED FISHSTICKS** 55^c

FEILERS • FROZEN BEEF SANDWICH **STEAK** 12 2-OZ. PKGS. \$1.00

OL' SMOKEY • FAMOUS **LINK SAUSAGE** 4 PKGS. 8-OZ. \$1.00

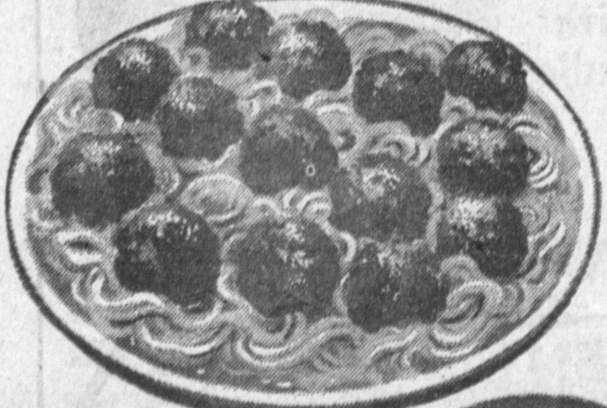
FLO FAME • FROZEN **ORANGE JUICE** 6-OZ. CANS **6 \$1**

STARKIST LIGHT MEAT **CHUNK TUNA** NO. 1/2 CANS **4 \$1**

F & P • HALVES **Yellow Cling PEACHES** LARGE NO. 2 1/2 CANS **5 \$1**

DEL MONTE **Chicken PIES** 8-OZ. PIES **5 \$1**

LIBBY • FROZEN **Fruit Cocktail** TALL 303 CANS **5 \$1**



Take Advantage of Food Giant's Special Price on Ground Beef.

F & P • ZESTY **TOMATO SAUCE** REG. 8-OZ. CAN **5^c**

HALIBUT FRIED CHICKEN ROAST BEEF • GROUND BEEF MEAT LOAF • VEAL CUTLET **FRADELIS DINNERS** 12-OZ. PKG. **49^c**



GOLDEN CREME • SMOOTH OR CREAMY **Cottage Cheese**

FOR TASTY SALADS FULL PINT CTN. **21^c**

LUCKY WHIP **WHIP TOPPING** 9 1/2-OZ. CAN **39^c**



GOLDEN CREME HOT DOG OR HAMBURGER **BUNS** 6-PKG. 8 PACK **19^c**



THORO-FED **DOG FOOD** TALL NO. 1 CANS BASIC, RAISIN OR LIVER **8 \$1**

TROPICAL • REFRESHING **GRAPE JUICE DRINK** LGE. 24-OZ. BTL. **25^c**

SUNRIPE • LARGE, RIPE **OLIVES** TALL NO. 1 CAN **25^c**

HENRI'S • TASTEE **DRESSING** 8-OZ. BTL. **25^c**

ERLAND • STEMS & PIECES **MUSHROOMS** 8 2-OZ. CANS **\$1**
BANNER ALASKA • TASTY AND NUTRITIOUS **SALMON** TALL NO. 1 CAN **43^c**

DONALD DUCK **GRAPEFRUIT SECTIONS** TALL 303 CAN **19^c**

CHARKET • SURE FIRE **CHARCOAL BRIQUETS** 10-LB. BAG **69^c**

ALL PURPOSE WONDER! **WISK DETERGENT** PRICE INCLUDES "8c OFF" LABEL FULL QUART **59^c**

MALAGA • WHITE ITALIA **GRAPES** **10^c lb.**

Serve these elegant white grapes frosted with sugar, topped with champagne and served in chilled sherbert glasses.

LONG GREEN • SLICING **Cucumbers** 5^c lb.
LAKE COUNTY • BARTLETT **PEARS** SWEET & JUICY **10^c lb.**

LIQUOR and TOBACCO
6 YRS. OLD • "WEBSTER" KY STR. **BOURBON** FULL FIFTH **\$3.19**
TIFFANY TAVERN • LONDON DRY **GIN** FULL FIFTH **\$2.79**
HIGHLAND LIGHT INFANTRY IMPORTED FROM SCOTLAND **SCOTCH** \$4.59

DELICATESSEN
RATH'S • PULLMAN **HAM** SMALL CANNED 3-LB. TIN **\$2.89**
LEO'S FAMOUS CHIPPED BEEF 3 3 1/2-OZ. PKGS. **\$1**
XLNT • TASTY POTATO SALAD 2-Lb. Plastic Cup **49^c**

Fels Naptha • Instant SOAP GIANT BOX **83^c**

GREEN GIANT WHOLE SPEARS ASPARAGUS NO. 300 TALL CAN **49^c**

WHITE KING WATER SOFTENER GIANT BOX **53^c**

Chicken of the Sea White Label, Solid Pack TUNA • WHITE MEAT NO. 1/2 CAN **39^c**

BRUCE FLOOR CLEANER QUART CAN **98^c**

NALLEY BEEF STEW 15-OZ. CAN **39^c**

Pam Dry Fry • Herosol COOKING OIL 9-OZ. CAN **\$1.69**

FOODCRAFT KOSHER DILLS 22-OZ. JAR **37^c**

NINE LIVES CAT FOOD 8-OZ. CANS **27^c**

BABO SCOURING CLEANSER 2 GIANT CANS **49^c**

PUREX BLEACH GAL. BTL. **63^c**

POMPEIAN OLIVE OIL PINT TIN **77^c**

ELASTIC • GLOSS STARCH 12-OZ. BOX **17^c**

GREEN GIANT CUT SPEAR ASPARAGUS 10 1/2-OZ. CAN **25^c**

CAMEO COPPER CLEANER 10-OZ. CAN **37^c**

KARO • Blue Label CORN SYRUP QUART BOTTLE **49^c**

FOOD GIANT

HAWTHORNE
423 S. Hawthorne Blvd.
at 132nd St.

MANHATTAN BEACH
2400 Sepulveda Blvd.
at Marine

SOUTH TORRANCE
Highway 101
at Hawthorne Blvd.

NORTH TORRANCE
4848 W. 190th St.
at Anza