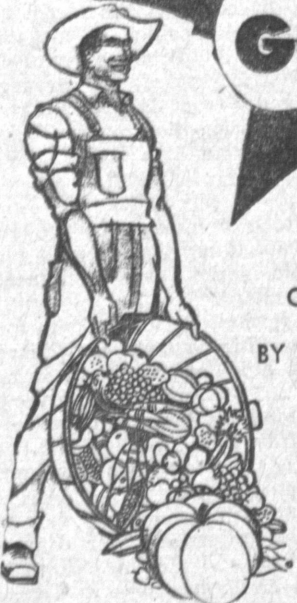


# FOOD GIANT COMPANIONS In QUALITY



LIMIT RIGHT RESERVE

## USDA GR. "A"

4 BIG SALE DAYS  
THURS - SUNDAY  
AUG. 13, 14, 15, 16

OUR QUALITY IS KNOWN BY THE COMPANY IT KEEPS

FINEST • FROZEN

**Johnston's PIES**

Strawberry Cream  
Chocolate Cream  
Coconut Cream  
Apple

REG. 69c  
Lge. 9-IN. PIE

# 49¢

Strictly Fresh  
Large 'AA'

# EGGS 43¢

BONNIE BRAND  
DOZ.

## USDA Grade 'A' FRESH FRYERS

# 29¢

Whole Body  
2 to 3 lb.  
Average



Tender, plump fryers... perfect for your barbecue! And such a treat at this low price. Try them marinated in a tangy sauce then fried to a golden crisp. Ummm... good!

U.S.D.A. GRADE A  
**Fryer Legs & Thighs 49¢ lb**  
**Breasts 53¢ lb**

GRAPE Or TROPICAL

# PUNCH 10¢

CAL FAME FROZEN  
YOUR CHOICE

## CAMPBELL'S TOMATO SOUP



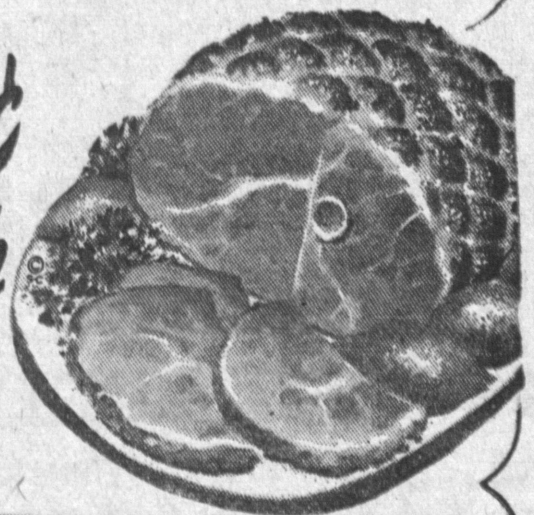
# 10¢

## RATH'S BLACKHAWK SMALL SIZE HAMS

Nothing better than a handy small size ham to help solve your summer meal planning problems! These tender succulent hams make a proud appearance at any meal... Breakfast, thick crusty slices fried with eggs; Lunch, a tasty salad or man-sized sandwich; Dinner, hot or cold a hearty main dish!

Rath's Korland • Lean 1-lb. Pkg. **49¢**  
Feller's • So Easy Beef or Veal 3-oz. Pkgs. **59¢**

Top Quality • Boneless Certi. Fresh • 2 to a lb. **TROUT 59¢**  
From Cold Northern waters 1 Pound Package **55¢**  
Sea Pak • Frozen Northern • Boneless Fry to a 3-oz. pkg. **\$1**  
Fried Fishsticks Strictly Fresh **39¢**



Plain or Iodized

**Leslie's SALT 10¢**

Reg. 26-oz. Shaker

Golden Creme Imitation

# ICE MILK 29¢

ASSORTED FLAVORS  
1/2 GAL. CTN.

ASSORTED FLAVORS

# KOOL-AID 3 Reg. Pkgs. 10¢

MANN'S • FLAVOR FRESH

# APPLE SAUCE 10¢

TALL 303 CAN

## New. Different. Delicious BONELESS PORK LOINS

Here is the pick of Iowa's choicest corn-fed pork. And you know it's corn feeding that makes these Eastern loins so downright delicious! All are raised to Food Giant's standards of perfection and eatability... and trimmed of excess fat before weighing.

# 69¢

LIBBY DEEP BROWN

# PORK & BEANS 10¢

TALL 300 CANS

A hearty main dish... seasoned just right then simmered to a rich mouth-watering goodness!

FOLGER'S INSTANT

# COFFEE 79¢

LARGE 6-OZ. JAR

UKULELE 1/2 SLICES HAWAIIAN

# PINEAPPLE 10¢

NO. 1 FLAT CAN

PACK-RITE CALIFORNIA

# TOMATOES 10¢

TALL 303 CAN

WHITE YELLOW, PINK

# SCOTT TISSUE 10¢

SO SOFT YET SO STRONG  
REG. ROLL

Serve-U-Rite • Small • Whole

# BEETS 10¢

TALL 303 CAN

FRESH PRODUCE

VINE-RIPENED

# CANTALOUPE 5¢

LARGE 6-OZ. JAR

For an extra-special dessert, fill cantaloupe sections with lime sherbert and top with sweetened whip cream!

QUEEN ISABELLA

# GRAPE JUICE 29¢

24-OZ. BTL.

PACIFIC • HONEY TREAT 1-LB. PACKAGE

# GRAHAM CRACKERS 29¢

RIBIER • Jet-Black • High Quality

# GRAPES 10¢

For Breakfast or Dessert

Tender Green • Try with this stuffing

# BELL PEPPERS 10¢

Mix 2 tbs. butter with 2 1/2 cups softened bread crumbs, 1 tbs. salt, 1/8 tsp. pepper and 2 strips crumbled bacon. Stuff peppers and bake 15 minutes.

DELICATESSEN

OSCAR MAYER

# FRANKS 49¢

ALL MEAT SKINLESS 1-LB. PKG.

Rath's • Spiced • Sliced Luncheon Meat **59¢ lb**  
Food Giant • Sliced American Cheese 8-oz. Pkg. **29¢**

LIQUOR and TOBACCO

NIKOFF • 80 PROOF • Distilled From Grain Full Fifth **\$2.79**

You won't breathe it to a soul

8 YRS. OLD • "DOYLE SPRINGS"

# STRAIGHT BOURBON FULL FIFTH \$3.09

H.L.I. • Extra Light Blended and Bottled In Scotland Fifth **\$4.45**

EGGO • FROZEN

# WAFFLES 10¢

3-CT. PKG.

CARNATION CANNED MILK

# 2 TALL CANS 31¢

FOR THAT Diamond Sparkle LOOK

# DIAL SHAMPOO 57¢

UNBREAKABLE SQUEEZE BOTTLE Includes "10c Off Label"

SPECIAL SAVE 10¢

# Chlorox 79¢

DESTROYS MOUTH ODOR INSTANTLY

# FOOD GIANT

WHITE KING • Gran. MILADY • BLUEBERRY SOAP GIANT BOX **71¢**  
BLINTZES 8-OZ. PKG. **49¢**

SUPPER CLUB Shoestring Potatoes 3 REG. CANS **29¢**



KEN-L-RATION DOG FOOD 26-oz. Can **25¢** 2 No. 1 Cans **33¢**

CHIFFON • YELLOW FACIAL TISSUES 400-ct. PKG. **29¢**

HAWTHORNE 423 S. Hawthorne Blvd. at 132nd St.

MANHATTAN BEACH 2400 Sepulveda Blvd. at Marine

SOUTH TORRANCE Highway 101 at Hawthorne Blvd.

NORTH TORRANCE 4848 W. 190th St. at Anza