

Bandals Smash 101 School Panes

Vandals broke 101 windows in 11 schools during the final quarter of the school year, Assistant Superintendent S. E. Waldrip reported to the Board of Education.

He estimated damage inflicted by pranksters at \$684, and loss of property through thefts at \$650. Items that were stolen included physical education equipment, bicycles, food mixer, radio, fire extinguisher and two side view mirrors from a training car.



dashing then...

DATED NOW

(savings can still be as outmoded)

Southwest's higher earnings are the difference between old-fashioned and modern saving

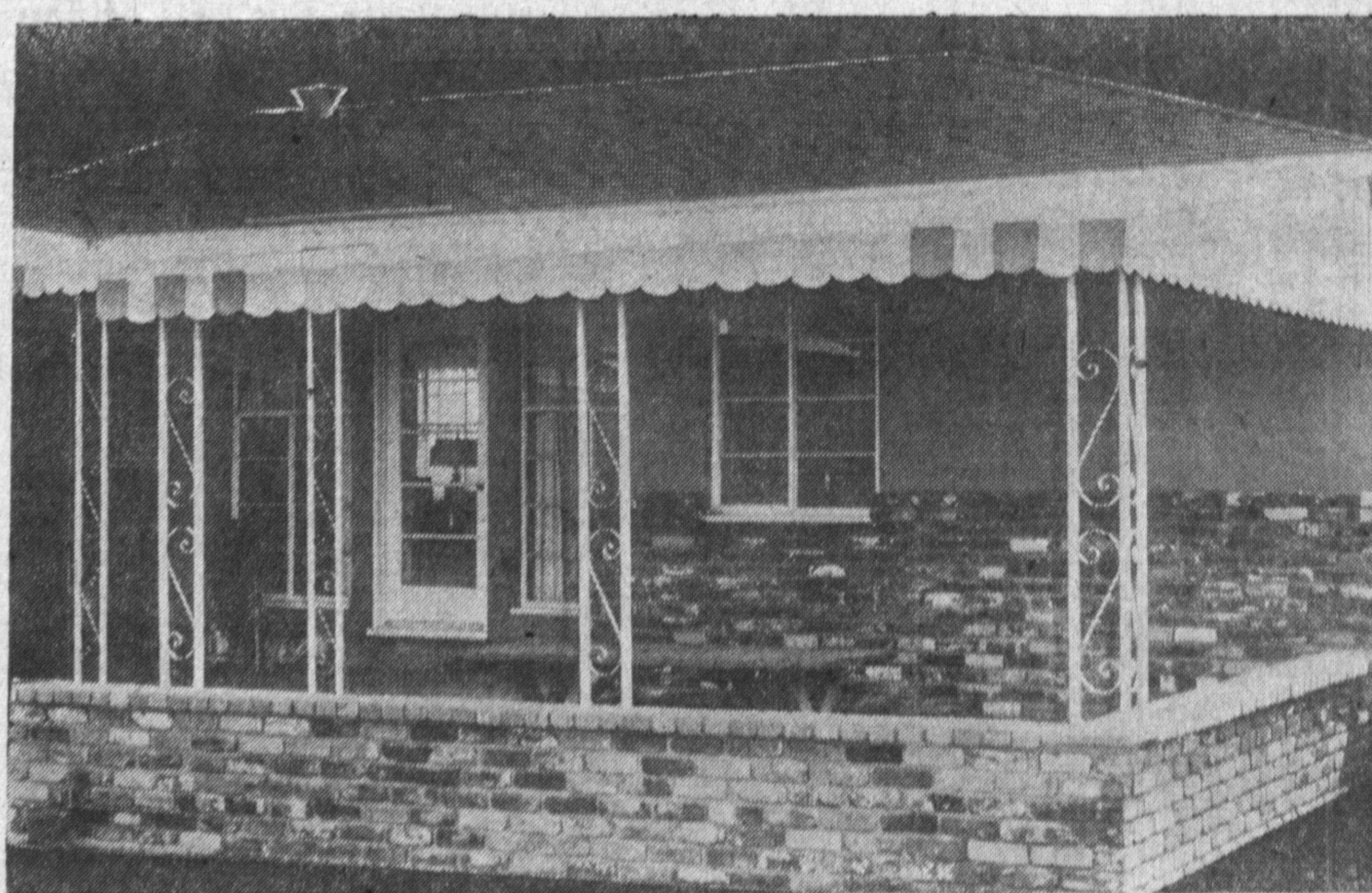
Do you keep up with the times? Then give your savings the same opportunity. And this opportunity lies in the insured protection of a Southwest Savings account. Generous returns added to your passbook every three months mean faster growth... greater profits. No question about it, you're money ahead when you place your funds with Southwest Savings. And earnings start the 1st of the month on accounts opened by the 10th.

each account
insured
up to
\$10,000

4%
current rate
per year
Paid
Quarterly

Southwest Savings
AND LOAN ASSOCIATION

INGLEWOOD: 2700 W. Manchester (at 6th Ave.)—PL 3-2164
TORRANCE: 1603 Cravens (at Marcelina)—FA 8-6111



Pictured above is one of many jobs constructed by Kool Metal Awning Co. Actual construction will be shown upon request. Call DA 6-8987.

OPEN SUNDAY 10 TO 3

**We Will Absolutely . . . Positively
BEAT ANY DEAL!**

on aluminum or canvas house patios, carports, trailer awnings, etc. . . .
Low, low prices on our complete selection of OUTDOOR FURNITURE!

BANK TERMS

Work and Materials Guaranteed

DA 6-8987

Free Estimates Days and Evenings

FR 9-1213

KOOL METAL

AWNING AND CANVAS
COMPANY

1424 Pacific Coast Highway

Harbor City, California



COOL DIP—Judy Wolf, left, and Janet Thomson emerge from Benstead Plunge after rehearsal for the water carnival to be staged there today and tomorrow at 7:30 p.m. The show will feature approximately 100 participants and will be free to the public.



NO! NO! NO!—Stephen Boyd, 11, and his brother, Ronnie, 8 1/2, of 529 Via la Selva, think those signs in El Retiro Park show a rather negative attitude on the part of city officials. The signs prohibit tree climbing, bike running, dogs, golf playing, parking and what have you. Well, at least the sign maker is happy. —Press Photo

Youth Arrested on Dope Charge by Motor Officer

A youth whose erratic driving of narcotics charges, roused the suspicion of Motor Officer Tom Wooldridge Monday afternoon, was booked on suspicion was stopped at Hawthorne Blvd.

and Talisman Sts after the officer said he noticed him weaving back and forth.

Wooldridge's suspicions were aroused when he said he noticed the suspect was scratching on his arm. An examination revealed that the youth had needle marks, police reported.

Mall Plan to Be Discussed

(Continued from page one)

ty or group of contiguous counties with a population totaling less than 250,000 shall have more than one Senator.

2. No county shall have more than five Senators. 3. No county or group of contiguous counties with a population of more than 250,000, but less than 900,000 shall have more than two Senators.

4. Any single county with a population in excess of 900,000 shall have three or more Senators. 5. The formula, for the purpose of determining future reapportionment needs, shall be subject to review by the State Legislature at intervals of ten years.



**YOU'LL
TURN
GREEN...**

when you find out
how much money
State Farm members
save on car insurance!

You may save important money on State Farm's low rates for careful drivers, and get top-notch protection, too. Contact me today.

JACK SMITH
1715 Cabrillo Avenue
Torrance — FA 8-3003

STATE FARM
INSURANCE
AUTOMOBILE INSURANCE COMPANY
Home Office: Bloomington, Illinois

custom tailor • clothier • importer • haberdasher



24014
HAWTHORNE BLVD.
WALTERIA

at the CORNER of
Pacific Coast Highway

AT SAVINGS TO

↑
coats
sport
and
slacks
suits
FOR-WEAR
READY
OF

STOCK
ENTIRE
SELLING

ALL OUT SALE

1 1/2

AND MORE

• CUSTOM DETAILED
READY-TO-WEAR SUITS

(famous makes) British Worsted, Italian Reverse Twist, Iridescent Gabardine, Luxury Tropicals, Dupioni Silk, Dupioni Silk and Sheeting, Turkish Mohair, Silk and Worsted, Worsted Flannel, Mohair and Wool—etc. All hand detailed.

ORIGINALLY TO \$75.....NOW **\$39**

ORIGINALLY TO \$95.....NOW **\$49**

ORIGINALLY TO \$115.....NOW **\$57**

ORIGINALLY TO \$125.....NOW **\$69**

ORIGINALLY TO \$135.....NOW **\$77**

ORIGINALLY TO \$150.....NOW **\$87**

• LUXURIOUS SPORT COATS

(famous makes) Pure Silk, Cashmere and Wool, Shetlands, Silk and Wool Flannels. All hand detailed.

ORIGINALLY TO \$75.....NOW **\$29**

ORIGINALLY TO \$75.....NOW **\$39**

ORIGINALLY TO \$95.....NOW **\$49**

• BENCH MADE SLACKS

(famous makes) Reverse Twists, Tropical Gabardines, Worsted Flannel, Mohair. All hand detailed.

ORIGINALLY TO \$15.....NOW **\$8**

ORIGINALLY TO \$25.....NOW **\$15**

ORIGINALLY TO \$39.50.....NOW **\$21**

• LEISURE JACKETS

(famous makes) Imported Fabrics from the British Commonwealth and Continental Europe.

ORIGINALLY TO \$29.50.....NOW **\$7**

Expert fitting and FREE alterations
by Tine's "the tailor"
on our premises.

ANY TIE IN THE STORE
A luxury group of selected imports from France, Italy, Switzerland, the British Commonwealth, etc., etc. Newest designs and colorings. Superb quality.
ORIGINALLY 2.00-3.00-3.00... NOW **\$1.50**
NONE HIGHER

SELECT SOX
(SPECIAL GROUP)
Expect to find... and you will find, the finest hosiery by America's best makers... GILSON hosiery, wool and acrylic, luxurious cottons, etc., etc.
ORIGINALLY 1.50-2.00... NOW **\$1.00**
A PAIR

**AN OPEN
LETTER...**

To the residents of Palos Verdes Estates, Rolling Hills, Hollywood Riviera, Torrance, Walteria, Inglewood, Hawthorne, Gardena and surrounding communities.

Descendant of a long line of European tailors, Tine's, "the tailor," announces plans to enlarge his Walteria store. Some twenty years ago, Tine's opened his first shop in Long Beach, introducing a new concept into the field of men's clothing. Tine's policy is to make up a select stock of ready-to-wear from his own bolts of imported fine wools. His ready-to-wear suits and sport coats have the same exciting and meticulous details usually found only in tailored to measure clothes. These fine summer and new Fall clothes are now offered for sale at disposal prices to expedite the remodeling program. Entire stock of clothes must be sold before the cabinet makers can get on with the job of remodeling and enlarging the selling space of his store.

USE OUR LAY-AWAY PLAN
CHARGE ACCOUNTS INVITED

SALE STARTS

TODAY, 10 A. M.

OPEN MONDAY THRU SAT. 'TIL 9 P.M.

BANKAMERICARDS HONORED

Tine's

SHOP FOR MEN

24014 HAWTHORNE BLVD.
WALTERIA

NEXT TO QWL DRUG STORE

FREE AND EASY PARKING FOR
1,000 AUTOMOBILES

FRONTIER 5-9413