

BUY YOUR USED CAR FROM A NEW-CAR DEALER

100% FINANCING if your credit is OK

BRING YOUR BANKAMERICARD

1958 Plymouth Custom 4-Door Station Wagon
Torqueflite, radio and heater.....\$2595

1957 Dodge Sierra 4-Door Station Wagon
Torqueflite, power steering, brakes, radio, heater, whitewall tires, big motor, dual exhausts.....\$2295

1957 Plymouth Sport 4-Door Station Wagon
Powerflite, radio and heater, whitewall tires.....\$2195

1957 Plymouth Belvedere 4-Door Sedan
Torqueflite, power steering, brakes, FACTORY AIR CONDITIONING, radio, heater, whitewall tires, 16,000-mile car. Buckskin tan and gold.....\$1995

1957 De Soto V-8 Hardtop Coupe
Ivory and white. Torqueflite, power steering and brakes, heater, whitewall tires.....\$2095

1955 De Soto 4-Door Sedan
White with lite blue trim. Powerflite, power steering and brakes, radio, heater, whitewall tires.....\$1295

1956 Buick Special Hardtop Coupe
Dynaflow, power steering, radio, heater, whitewall tires.....\$1295

Clean Transportation Cars

1953 Dodge V-8 Hardtop Coupe
Automatic transmission, radio, heater, whitewall tires.....\$595

1949 Willys Wagon
Original finish.....\$395

1954 Chrysler Windsor 2-Door
Automatic transmission, radio, heater.....\$695

1953 Chevrolet Convertible
Radio, heater, whitewall tires. Like new.....\$795

Cecil L. Thomas '57 Olds...\$2195
'88" Holiday 90 days or 4000 mile unconditional guarantee. No exclusions—no policies to buy.

'54 Olds...\$995
'88" Sedan. 90 days or 4000 mile unconditional guarantee. No exclusions—no policies to buy.

'55 Cadillac \$2295
42 Coupe, Full Power. 90 days or 4000 mile unconditional guarantee. No exclusions—no policies to buy.

CECIL L. THOMAS AND SONS
Cadillac, Olds, GMC Trucks, Fiat, Alfa Romeo

7th to 8th at Geffey SAN PEDRO TE 2-4659

STATION WAGONS GALORE

'57 CHEVROLET HAS POWERGLIDE, RADIO, HEATER, PLUS ALL THE EXTRAS.

'57 FORD V-8 RANCH WAGON, FORD-O-MATIC, RADIO, HEATER, ETC.

'56 FORD RANCH WAGON, WITH STANDARD TRANSMISSION, RADIO, HEATER, ECONOMY PLUS.

'55 PONTIAC 4-DOOR WAGON, THE COMFORTABLE WAGON OF TODAY. HYDRAMATIC, RADIO, HEATER, ETC.

'53 FORD V-8 RANCH WAGON, HAS ECONOMY OVERDRIVE, RADIO, HEATER, A REAL BUY!

\$99 delivers
15 month—15,000 mile warranty available.

Bob BEAVER PONTIAC
900 Pacific Coast Hwy. Hermosa FR 4-6931

Factory Air-Conditioning '56 CHEVROLET
Bel Air Hardtop, Powerglide, radio, heater, white side wall tires and a host of other extras. Brought to you by a well known and popular local couple who really gave it care and service. Not a spot or mark anywhere. Come in and inspect it to yourself—whether you buy or not. You are always welcome. BIG SALE \$99 down. FREE 5-day trial exchange. 15 month, 15,000 mile guarantee available. BOB BEAVER PONTIAC, 900 Pacific Coast Hwy., Hermosa. FR 4-6931

1955 M.G. Magnette
Sports sedan. Blue finish. Immaculate interior. This is a one owner new car trade-in.
Special Week-End Price \$1395

1957 CHEVROLET
Bel Air Station Wagon. Equipped with powerglide, radio, heater, custom whitewall tires. Comes from exclusive Westwood residential area. Very low mileage. Not a mar or spot anywhere. Come in and inspect it today. BIG SALE \$99 down. Bank financing, liberal trial exchange. This car carries Bob Beaver 15-month and 15,000 mile guarantee. BOB BEAVER PONTIAC, 900 Pacific Coast Hwy., Hermosa. FR 4-6931.

'58 FORD
4-door Fairlane "500," radio, heater, Cruise-O-Matic, white walls.
\$10 Down (on approved credit)

LAWDALE MOTORS
AUTHORIZED SIMCA
15400 Hawthorne Blvd. OS 9-2245

SAVE \$\$\$
Local automobile Salesman. Must leave Beach area for driver climate for wife's health. Take over payments on my near new demonstrator for \$50 cash and payments of \$15 week. Call Ben Topper, FR 4-3443.

CHECK THESE!
The cars listed below are trade-ins on our late model cars and are being sold at close to wholesale prices because we need the space.

First Come... First Served
NO DEALERS, PLEASE!

'56 Pontiac Station Wagon
4-door model V-8. Automatic drive, radio, heater, full leather interior, whitewall tires. Beautiful mustard finish. A real family car.
Full Price \$1395 Down Payment \$52.80 Payments \$13.46 Wk.

'53 Ford 1/2-Ton Pickup
With Camper. V-8, overdrive, radio, heater. Real sharp—perfect for the family outing.
Full Price \$795 Down Payment \$26.80 Payments \$42 Month

'53 Chevrolet 4-Door
Stick shift with radio. Perfect car for school children. Real clean and perfect for the pocketbook.
Full Price \$495 Down Payment \$15.80 Payments \$27 Month

'58 Ford V-8 1/2-Ton Pickup
Beautiful ivory finish. Immaculate condition inside and out. Like new.
Full Price \$1395 Down Payment \$52.80 Payments \$13.46 Wk.

'57 Chevrolet 1/2-Ton Pickup
Exceptional condition throughout. A real nice truck, ready for hard work.
Full Price \$1295 Down Payment \$48.80 Payments \$54.17 Month

We also have a complete stock of '55, '56, '57 and '58 model cars—station wagons, pickups, hardtops, 4-door sedans, etc. Call us for the car you are looking for.

Herman Miller USED CARS
The Big Lot at Torrance Blvd. and Cabrillo Ave. at 213th St.
Torrance 1311 Cabrillo Ave.
FA 8-4014 - TE 4-4711
Terms listed available on approved credit

NEW 1959 BUICK LA SABRE 4-DOOR
Dynaflow, deluxe steering wheel, directional signals, aluminum air cooled brakes, step-on parking brakes, dual sun visors, electric windshield wipers, dual horns, safety plate glass (in every window), oil filter, magic mirror finish.
\$2693 Full Price

Buick BUTLER Opel
400 S. Sepulveda FR 4-8964
Manhattan Beach

1953 FORD STATION WAGON
V-8 economy model with overdrive. Radio, heater, 6 years young but a shame to call used. Just traded in. BIG SALE \$99 down. This car carries Bob Beaver 15-month and 15,000 mile guarantee. Free 5-day trial exchange. BOB BEAVER PONTIAC, 900 Pacific Coast Hwy., Hermosa. FR 4-6931.

'57 Volkswagen
2-door sedan, factory equipped. Has radio, heater and white walls.
\$1595

RIVIERA VOLKSWAGEN
2601 Pacific Coast Hwy. Hermosa FR 4-3488

'57 Ford Wagon
Country Sedan driven only 12,700 original miles. It's a beauty with powerglide, radio, heater, full vinyl interior, for vacation time fun. Believe me you'll like it. The original owner was fussy as you can see when you come in to inspect it. BIG SALE, \$49 down or \$79.90 per month with free 5-day trial exchange. This car carries Bob Beaver 15-month and 15,000-mile guarantee. BOB BEAVER PONTIAC, 900 Pacific Coast Hwy., Hermosa. FR 4-6931

1957 M.G.A.
Roadster. The world's most popular sports car. Full factory equipment. (Two 1000 cc. engines) and specially priced for the weekend.
Special Week-End Price \$1799

'54 PONTIAC Chieftain, 4-dr. sed.
Hydra. Bel Air. Throughout as can be seen. \$10 down, \$7 week. 1637 W. Rosecrans, Gardena DA 3-2322

For the Deal of Your Life... Bring Your Car and Your Wife

SALE SUMMER USED CAR CLEARANCE. EVERY CAR MUST BE SOLD!

We Will Sell Any Car
UNDER DEALER'S BLUE BOOK
No Reasonable Offer Refused

USED CAR INVENTORY JULY 22, 1959

DOMESTIC USED CARS

Yr.	Make	Cyl.	Model	Equipment	License	Price
'58	Chevrolet	8	Bel Air 2-dr.	Radio, heater, Powerglide	PBB307	\$2195
'57	Mercury	8	Monterey 4-dr.	Radio, heater, Merc. power steering	SHE322	1795
'57	Plymouth	8	Belvedere 2-dr.	Radio, heater, Powerflite	NEA521	1695
'57	Dodge	8	Coronet 2-dr.	Radio, heater, Powerflite	NGG760	1695
'57	Ford	6	Custom 300 2-dr.	Heater and stick shift	MUD533	1195
'56	Chevrolet	8	Bel Air HT 4-dr.	Rad., heater, Powerglide, pwr. sfrg.	GLJ405	1695
'56	Ford	8	Country Sed. 4-dr.	Radio, heater, Fordomatic	GLE462	1595
'56	Plymouth	8	Belvedere HT	Radio, heater, Powerflite, P. S.	LER296	1495
'56	Pontiac	8	Chieftain 4-dr.	Radio, heater, hydramatic	DLR339	1195
'55	Cadillac	8	Coupe DeVille	Radio, heater, full power	FYLO28	2395
'55	Chevrolet	8	Stat. Wagon 4-dr.	Radio, heater, Powerglide	LSM804	1595
'55	Buick	8	Can. Riv. Coupe	Radio, heater, Dynaflo, P. S.	KKX126	1395
'55	Oldsmobile	8	Holiday 98 Coupe	Radio, heater, full power	BDL339	1395
'55	Chevrolet	8	Bel Air 4-dr.	Radio, heater, Powerglide	KRC640	1395
'55	Buick	8	Special 4-dr.	Radio, heater, Powerflite	JNF539	1195
'55	Plymouth	8	Belvedere 4-dr.	Radio, heater, stick trans.	RRP349	995
'55	Ford	8	Mainline 4-dr.	Radio, heater, Powerflite	KLX654	895
'55	Plymouth	8	Plaza Sed. 4-dr.	Radio, heater, Powerflite	LVR367	795
'55	Ford	6	Fairlane Sed.	Radio, heater, Fordomatic	GLL644	1195
'55	Ford	8	Fairlane 2-dr.	Radio, heater, Fordomatic	MCX648	995
'55	Plymouth	8	Belvedere 4-dr.	Radio, heater, Powerflite	KSV580	795
'55	Rambler	6	Station Wagon	Radio, heater, overdrive	GPT110	1295
'55	Rambler	6	Station Wagon	Radio, heater, overdrive	RGV762	1395
'55	Rambler	6	Station Wagon	Radio, heater, hydramatic	KSV220	1495
'54	Buick	8	Special Riv. Cps.	Radio, heater, hydramatic	GDT669	995
'54	Ford	8	Victoria HT	Radio, heater, Fordo., P. S.	KCP422	795
'54	Mercury	8	Monterey Sed.	Radio, heater, Mercomatic	EJX590	795
'54	Ford	8	Custom Sed. 2-dr.	Radio, heater	GGW236	695
'53	Buick	8	Special Sed. 4-dr.	Radio, heater, stick shift	GLN131	595
'53	Buick	8	Super Sedan 4-dr.	Radio, heater, Dynaflo	HHE805	695
'53	Mercury	8	Monterey HT	Radio, heater, Mercomatic	KBJ245	895

IMPORTED USED CARS

Yr.	Make	Model	Equipment	License	Price
'56	Triumph	TR3 4	Soft Top Roadster Heater, w.w. tires	MVB063	1895
'58	Triumph	4	Estate Wagon Heater, tu-tone	CBW910	1695
'58	Renault	4	Dauphine Sed. Heater, standard	PCX872	1395
'58	Renault	4	Dauphine Sed. Heater, standard	PCX874	1395
'57	Volkswagen	4	Sunroof Sedan Radio, heater, auto. clutch	MLG256	1695
'57	Renault	4	Dauphine Sed. Radio, heater	MZA893	1295
'57	Metro	4	Hardtop Coupe Radio, heater	MYF475	1295
'56	Morris	4	Sedan 4-dr. Radio, heater	NZH018	795
'52	MG	4	TD Roadster Radio, heater	HDW122	1195

TRANSPORTATION CARS

'52	Oldsmobile	8	Holiday Coupe	Radio, heater, hydramatic	KEC961	695
'52	Ford	6	Custom 2-dr.	Radio, heater, Fordomatic	NNL394	495
'52	Buick	8	Riviera Coupe	Radio, heater, Dynaflo	GCN491	495
'51	Chevrolet	6	Sedan 4-dr.	Radio, heater	GCC758	295
'51	Pontiac	8	Chieftain 4-dr.	Radio, heater, hydramatic	NUF450	295
'50	Buick	8	Super 4-dr.	Radio, heater, Dynaflo	GUG036	195

FAirfax 8-6161

De VON Nevada 6-6223

PLYMOUTH—TRIUMPH CENTER
1600 CABRILLO AVE. TORRANCE

'55 LINCOLN
4 door hardtop sedan gorgeous Arctic White set off by spotless matching black and white upholstery. 18,000 actual miles. Car was used locally as wife's second car by wealthy boat builder. Has hydramatic radio, heater, effortless steering. BIG SALE \$99 down and free 5-day liberal bank terms and free 5-day trial exchange. This car carries Bob Beaver 15-month and 15,000 mile guarantee available. BOB BEAVER PONTIAC, 900 Pacific Coast Hwy., Hermosa. FR 4-6931.

'57 Volkswagen
2-door sedan, factory equipped. Clean as a pin.
\$1595

RIVIERA VOLKSWAGEN
2601 Pacific Coast Hwy. Hermosa FR 4-3488

'58 CHEVROLET HARDTOP
Type coupe. Fully factory equipped with radio, heater, etc. Very low mileage. Finish and upholstery like new. Just traded in on new Pontiac. Big Sale! Just \$99 down. This car carries Bob Beaver 15-month and 15,000 mile guarantee. Free 5-day trial exchange. BOB BEAVER PONTIAC, 900 Pacific Coast Hwy., Hermosa. FR 4-6931.

'57 Hillman
4-door sedan. Radio, heater, whitewall tires. This is an economy special.
\$5 Down or Your Car in Trade

LAWDALE MOTORS
AUTHORIZED SIMCA
15400 Hawthorne Blvd. OS 9-2245

'56 PACKARD
4 dr. hydramatic, radio, heater, power steering & brakes. Belongs to wife of doctor. Come and inspect it whether you buy or not. BIG SALE \$99 down. Bank financing, liberal trial exchange. This car carries Bob Beaver 15-month and 15,000 mile guarantee. BOB BEAVER PONTIAC, 900 Pacific Coast Hwy., Hermosa. FR 4-6931.

Take Over Payments
'53 Ford 2-door sedan, Radio, heater, new motor, new clutch, complete electrical system installed May 1959. New owner take-over warranty on new engine. His money down. \$27.07 per month. Call finance manager, FR 4-2946.

1957 CHEVROLET
2-door Hardtop type sedan, V-8. Easy driving Powerglide, HIFI type radio, big heater. Custom white wall tires. Come in and inspect it today whether you buy or not, you are always welcome. BIG SALE \$99 down, liberal bank terms and free 5-day trial exchange. This car carries Bob Beaver 15-month and 15,000 mile guarantee available. BOB BEAVER PONTIAC, 900 Pacific Coast Hwy., Hermosa. FR 4-6931.

1955 BUICK
Super convertible, full power. Radio, heater, white wall tires, condor yellow finish.
\$1295 Special Week-End Price

'57 FORD FAIRLANE
'500" hardtop, 8 to choose from trial exchange. BOB BEAVER'S 15-month and 15,000 mile guarantee available. BOB BEAVER PONTIAC, 900 Pacific Coast Hwy., Hermosa. FR 4-6931.

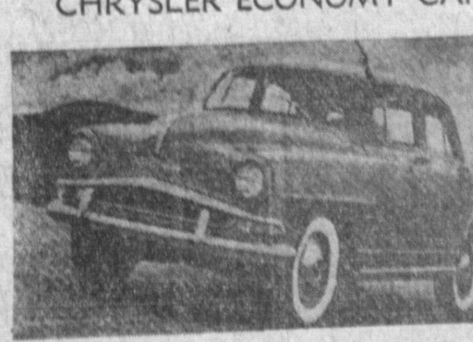
'56 Ford
Ranch Wagon, F.O.M., R.H.
\$1195

RIVIERA VOLKSWAGEN
2601 Pacific Coast Hwy. Hermosa FR 4-3488
WE NEED YOUR TRADE-INS

Take Over Payments
'54 FORD 2-door sedan, V-8, Fordomatic, radio and heater, white sidewalls. Your chance to save lots of money on this one. Only \$48.75 cash required and payments of \$46.62 month. Call Finance Manager, FR 4-2946.

1954 Merc. Htd., clean 1 owner, w.w., Merc-O-Matic, make offer. DA 5-1148.

Lawndale Motors
Authorized
"SIMCA"
'59 SIMCA—\$99 DOWN
CHRYSLER ECONOMY CAR



All Models Available
42.6 Miles per Gallon

Lawndale Motors
Your Nearest Authorized Simca Dealer
By Chrysler Corporation
15400 Hawthorne Blvd.
(2 blocks north of Manhattan Beach Blvd.)
OS 9-2245
Open Evenings and Sunday 'til 9 p.m.

100 TRANSPORTATION CARS
All Makes — All Models
NO DOWN
WE CARRY OUR OWN CONTRACTS
CAVIN USED CARS
2120 W. Pacific Coast Hwy.
OPEN 9 TO 9

3 1/2%
Financing Available at
BOB BEAVER Pontiac

931 PACIFIC COAST HWY.
Hermosa Beach BRAND NEW 1959 Pontiac Catalina

\$2633*
FULL PRICE
WORLD'S WILDEST TRADE-IN ALLOWANCE
CHECK YOUR OWN TRADE**

CADILLACS

- '51 Cadillac. We will allow \$1450
- '52 Cadillac. We will allow \$1600
- '53 Cadillac. We will allow \$1650
- '54 Cadillac. We will allow \$2450
- '55 Cadillac. We will allow \$2900
- '56 Cadillac. We will allow \$3450
- '57 Cadillac. We will allow \$3700

CHEVROLETS

- '51 Chevrolet. We will allow \$1150
- '52 Chevrolet. We will allow \$1250
- '53 Chevrolet. We will allow \$1500
- '54 Chevrolet. We will allow \$1725
- '55 Chevrolet. We will allow \$2000
- '56 Chevrolet. We will allow \$2400
- '57 Chevrolet. We will allow \$2750
- '58 Chevrolet. We will allow \$3100

CHRYSLERS

- '51 Chrysler. We will allow \$1050
- '52 Chrysler. We will allow \$1150
- '53 Chrysler. We will allow \$1400
- '54 Chrysler. We will allow \$1625
- '55 Chrysler. We will allow \$1900
- '56 Chrysler. We will allow \$2200
- '57 Chrysler. We will allow \$2500
- '58 Chrysler. We will allow \$2900

DODGES

- '51 Dodge. We will allow \$1075
- '52 Dodge. We will allow \$1125
- '53 Dodge. We will allow \$1450
- '54 Dodge. We will allow \$1650
- '55 Dodge. We will allow \$1850
- '56 Dodge. We will allow \$2400
- '57 Dodge. We will allow \$2950
- '58 Dodge. We will allow \$3050

FORDS

- '51 Ford. We will allow \$1050
- '52 Ford. We will allow \$1150
- '53 Ford. We will allow \$1400
- '54 Ford. We will allow \$1625
- '55 Ford. We will allow \$1900
- '56 Ford. We will allow \$2300
- '57 Ford. We will allow \$2650
- '58 Ford. We will allow \$2950

MERCURYS

- '51 Mercury. We will allow \$1100
- '52 Mercury. We will allow \$1350
- '53 Mercury. We will allow \$1600
- '54 Mercury. We will allow \$1900
- '55 Mercury. We will allow \$2200
- '56 Mercury. We will allow \$2500
- '57 Mercury. We will allow \$2850
- '58 Mercury. We will allow \$3150

OLDSMOBILES

- '51 Olds. We will allow \$1150
- '52 Olds. We will allow \$1350
- '53 Olds. We will allow \$1675
- '54 Olds. We will allow \$1900
- '55 Olds. We will allow \$2200
- '56 Olds. We will allow \$2550
- '57 Olds. We will allow \$2850
- '58 Olds. We will allow \$3050

PLYMOUTHs

- '51 Plymouth. We will allow \$1050
- '52 Plymouth. We will allow \$1175
- '53 Plymouth. We will allow \$1350
- '54 Plymouth. We will allow \$1600
- '55 Plymouth. We will allow \$1700
- '56 Plymouth. We will allow \$1950
- '57 Plymouth. We will allow \$2200
- '58 Plymouth. We will allow \$2600

PONTIACS

- '51 Pontiac. We will allow \$1050
- '52 Pontiac. We will allow \$1110
- '53 Pontiac. We will allow \$1400
- '54 Pontiac. We will allow \$1700
- '55 Pontiac. We will allow \$2100
- '56 Pontiac. We will allow \$2400
- '57 Pontiac. We will allow \$2850
- '58 Pontiac. We will allow \$3050

BOB BEAVER PONTIAC 931
Pacific Coast Highway at 10th St.
Hermosa Beach FR 4-3444
Open Daily and Sunday 10 to 10 P. M.
*Subject to model and condition of your trade-in on new Bonneville fully equipped with Vogue tires.
**Qualified Buyers
*Tax, License and Destination Charge.