



WRITER'S CRAMP—Beautiful Luz Marina Zuluaga, Miss Universe of 1959, signs autographs during her appearance at the Broadway Del Amo Friday for a Catalina swim fashion show held to a capacity crowd in the Terrace Room, while William Belding, general manager of the Broadway, looks on.

Local Actors to Star

Three Torrance actors will appear in the July 9th Hermosa Beach Pier Playhouse production of "East Lynne."

Ed Siani will play the role of Sire Francis Levison; Helen Car-

ney will appear as Miss Cornelia and Bob Johnston as Justice Hare. Reservations may be obtained by calling FR 2-5000. The curtain will open at 8:30. Parking is available one block east of theater at 13th and Beachwood.

Come to Church



WORSHIP AT THE CHURCH OF YOUR CHOICE MORE THINGS ARE BROUGHT BY PRAYER THAN THIS WORLD DREAMS OF

CALVARY CHURCH ASSEMBLY OF GOD—225th and Oak St., Lomita, Calif. Rev. and Mrs. Eugene C. Williams, Sunday School 9:30 a.m., morning worship, 11 a.m.; Young People's service, 6:30 p.m.; Evangelistic service, 7:30 p.m.; Mid-week service, Wednesday morning prayer meeting.

CHURCH OF CHRIST—1217 Cravens Ave. in Torrance. Schedule of services: Sunday, 8:30 a.m., Worship service, 9:45 a.m., Bible study, 10:45 a.m., Worship service, 6 p.m.; Young People's meeting, 7 p.m.; Evening Worship Wednesday, 7:30 p.m.; Ladies' Bible class, 7:30 p.m.; Bible study.

FIRST BAPTIST CHURCH—Carson at Manuel. Rev. Morgan Gates, pastor, Robt. Dahn, assistant minister. Church phone, FA 8-5030; 9:15 and 10:45 morning worship; 9:15 Nursery through 6th grade; 10:45 Jr. High through Adult Sunday School; 6:30 p.m. Training Unions; 7:30 p.m. Evangelistic service; Wednesday 7:30 p.m. mid-week service. Nursery for every service.

FIRST BAPTIST CHURCH—Park and Newton Sts. in Waverly. Rev. L. P. Husted, pastor. RFrontier 5-4792. Bible school at 9:30 a.m., morning worship hour, 9:30 and 11 a.m. Nursery care provided for both sessions. Inspirational Gospel Hour at 7 p.m. Wednesday 7:30 p.m. Bible exposition and prayer.

FIRST LUTHERAN CHURCH—Located on Carson St. and Flower Ave. in Torrance. Wm. J. Reider, pastor. Residence, 2550 El Dorado. Phone FA 8-3248. Church office, 1725 Flower Ave. FA 8-5884. First Church worship 8 a.m.; Sunday School, 9:30 a.m.; second morning worship, 10:45 a.m.

FOUR SQUARE CHURCH—Corner of Arlington and Sepulveda. Telephone, DA 6-2072. Rev. and Mrs. James P. Loven, pastors. Sunday: Sunday school, 9:30 a.m.; morning worship, 10:45 a.m.; group services, 6:30 p.m. Y. P. Cadets, Defenders; Evangelistic, 7:30 p.m. Mid-week, Wednesday, Bible study at 7:30 p.m. Public invited.

GREEK ORTHODOX—317 S. Broadway, Redondo Beach. Phone RFrontier 5-8931. Divine Liturgy, 11 a.m. to 12 noon every Sunday. Rev. Nectarios Nifilidis. Sunday school classes at 10:30 a.m. Greek school and Bible classes every Tuesday, Thursday, 7:30 p.m.

IMMANUEL LUTHERAN CHURCH (Missouri Synod)—705 Knob Hill Ave., Redondo Beach, near Southwood Park, west of Hawthorne, south of Sepulveda. Sunday School, 9:45 a.m. worship service, 8:30 and 11 a.m. Pastor A. L. Scheutz. RFrontier 5-9535 or 5-7535.

LUTHERAN CHURCH OF THE GOOD SHEPHERD—21100 Victor St., Torrance. Gerald W. Garfield, pastor, phones FR 3-1144 or FR 5-0931. Sunday, 9:30 a.m. Sunday school, 10:45 a.m. morning worship; child care during the service. Thursday 8 p.m. Mid-week Bible Study.

NATIVITY CATHOLIC CHURCH—1447 Engracia Ave., Torrance. Rev. Joseph K. McArdle, pastor, telephone FAirfax 8-2776. Schedule of masses: Eight Sunday masses, seven at main church, 1447 Engracia Ave., 7, 8, 9, 10, 11 and 12:15. One mass at Mission Church of St. Joseph's, 2314 W. Del Amo Blvd., at 9:30 a.m. Confessions three times on Saturdays, 10 to 11 a.m., 4 to 6 p.m., 7:30 to 9 p.m. Baptisms Saturdays and Sundays at 2 p.m. Infant care from 9 to 11 a.m. at Nativity Annex, 1415 Engracia Ave., Torrance.

ST. ANDREWS EPISCOPAL CHURCH—Phone FA 8-3781, Res. FA 8-5649, 1432 Engracia (across from Torrance Memorial Hospital). Rev. Hugh R. Percv, BA, BD, Holy Communion, 7:30 a.m.; Sunday school and family service, 9:15 a.m.; Sunday services 11 a.m. Holy Communion Sunday—first Sunday in month.

ST. MARK'S PRESBYTERIAN CHURCH—245th St. at Woodward Ave., Lomita. (Near Lomita Blvd. & Harbore Ave.) Church phone: DA 6-4086. Rev. Eldon Durham, Minister, telephone, DA 4-0139. Sunday services 9:30 and 11 a.m. Church School, 9:30 a.m. Westminster Fellowship Youth groups, 5:00 and 7:00 p.m. This church welcomes people of all races.

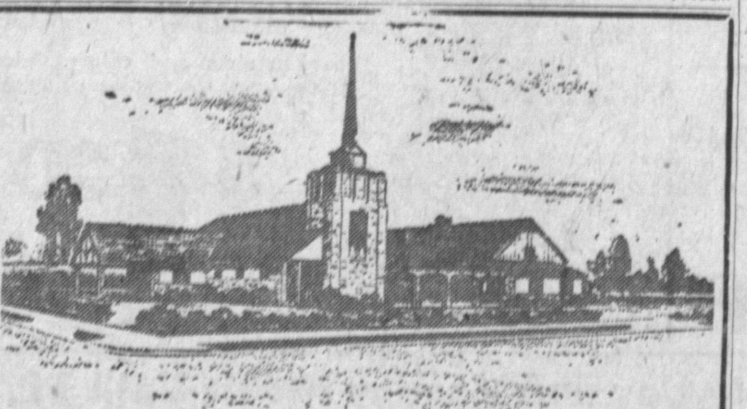
SOUTH BAY BAPTIST CHURCH—4565 Sharyanne Lane, Seaside Ranchos, Torrance. Pastor, Dr. J. C. Brumfield, RFrontier 5-3433. Sundays, Sunday school, 9:30 a.m.; morning worship, 10:50 a.m.; Baptist training fellowship, 4:00 p.m.; evening worship, 7:00 p.m.; Wednesday, Bible study and prayer, 7:30 p.m.; Thursday, choir rehearsal, 7:30 p.m. Modern crib nursery and toddler care provided all stated church services. Sunday school bus transportation schedule.

SOUTH BAY CHURCH OF GOD—17661 Yukon Ave. Phone FA 1-2674. Rev. C. L. Tierney, 17615 Yukon, Torrance. Sunday school, 9:30 a.m.; morning worship, 11 a.m.; Sunday night service, 7:30 p.m. Mid-week services, Wednesday, 7:30 p.m.

TEMPLE MEMORAH—112 N. Catalina, Redondo Beach. Rabbi Henri E. Front. Friday night religious services, 8:15 p.m. Religious school, First Methodist Church (temporary location) 119 Torrance Blvd., Redondo Beach, Saturday 9 a.m. Phone FR 9-5893, or FR 3-4620. Sisterhood meetings every second Monday, 8:30 p.m. Brotherhood every second Tuesday, 8:30 p.m.

TORRANCE SEVENTH-DAY ADVENTIST—1610 Acacia Ave. Elder Glenn L. Goffar, pastor. Phone: Residence, FR 5-8731, Church office, FA 8-1540. Sabbath school, 9:30 a.m.; church services, 11 a.m.; Bible study, Wednesday, 7:30 p.m.; young people's meeting, Friday, 7:30 p.m.

GREYFRIARS MEMORIAL PRESBYTERIAN CHURCH (Fundamental Orthodox) Formerly of Los Angeles. Worship in the Sea Aire recreation hall at Reynolds and Lupine. United meeting on November 9th at 10:30 a.m. Sunday school beginning as usual at 9:30 a.m. Bring young children (nursery). Dr. David Calderwood will preach.



Halverson-Leavell Mortuaries 1223 Cravens, Torrance, Calif. FAirfax 8-1223



USDA "Choice"

REGULAR CUT OR THICK CUT FOR SWISSING . . .

Swiss or

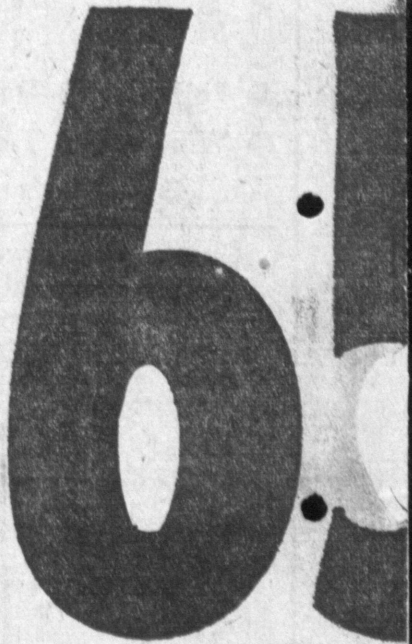
ROUND STEAK



Rich Red Rounds

Tender & Juicy

FULL CUTS



LEMONADE FROZEN 6-ounce can 4 FOR 25¢

MCP-BRAND WARM WEATHER CALLS FOR A TASTY, REFRESHING BEVERAGE . . . AND FROZEN LEMONADE FILLS THE BILL . . . SO EASY TO PREPARE . . . SO REFRESHING . . . SO ECONOMICAL.

MAYONNAISE QUART JAR 45¢

LAURA SCUDDER FOR TASTY SALADS OR DELICIOUS SANDWICH SPREAD. IT'S HARD TO BEAT THIS SMOOTH CLEAR-BODIED DRESSING . . .

ICE CREAM HOLIDAY CATERING QUALITY 49¢

TO TOP OFF THAT WONDERFUL ROUND STEAK DINNER, A SCOOP OF ICE CREAM ON YOUR FAVORITE PIE IS HARD TO BEAT.

FROZEN FRUIT PIES 8-INCH 3 for \$1.00

PEANUT BUTTER 16-OZ. JAR 45¢

FROZEN DINNERS 11-OZ. PKG. 59¢

MACARONI & CHEESE 20-OZ. PKG. 39¢

SPAM LUNCHEON MEAT 12-OZ. CAN 39¢

RATH'S SAUSAGE BREAKFAST 8-OZ. CAN 39¢

PRICES EFFECTIVE THURSDAY, FRIDAY, AND SATURDAY . . . JUNE 25, 26, 27

Advertisement for a wading pool: \$1800 VALUE STEEL FRAME 66"x42"x12" WADING POOL \$888. Features: FOUR CORNER SEATS . . . HEAVY CANVAS RUBBERIZED LINER . . . SUITABLE AS SAND BOX . . . HAS SHOWER . . . GUARANTEED (Limited to Quantity on Hand)

NABISCO SNACK CHIPPERS . . . VEGETABLE WESTON COGNAC TOWN & COUNTRY ASSOCIATION HEINZ WHITE SPARKLING, WHITE, DISTILLED

RED . . . RIPE A HOT-WEATHER RED-RIPE MELON . . . SERVE A BIG SMACKIN' TREAT IN YOUR FAVORITE WANT TO BUY A PRICE.