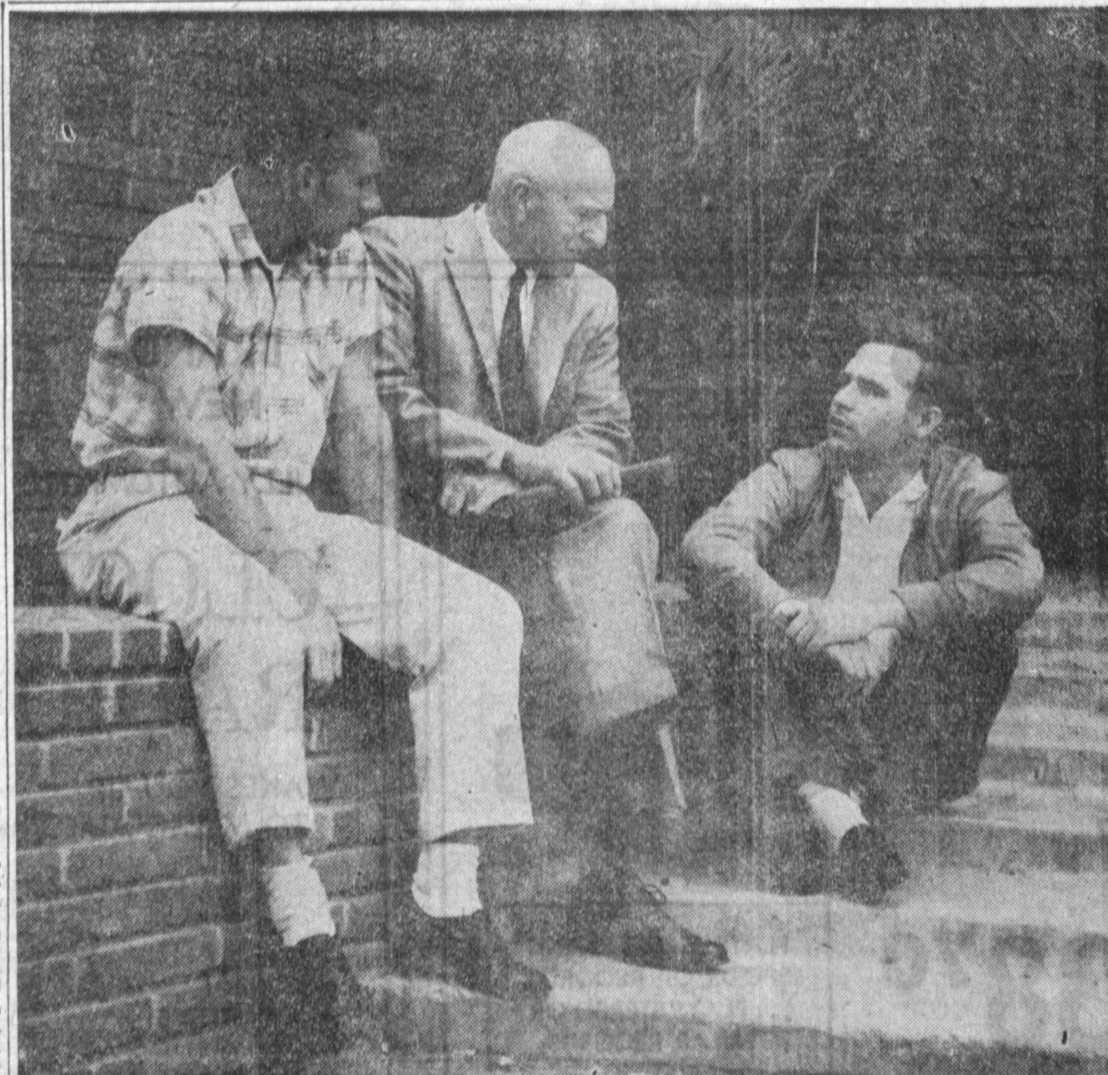




FIRST REUNION by members of the Torrance High School graduation class of winter 1939 was held recently at the Marland Penguin Room. From the class of 28 members, 18 were able to attend. From left, seated: Mmes. Robert Wertz, Gerald Grubb, Martha Kelleff, J. E. Powers, William Gimble and Miss Lorena Long. Standing, first row: Henry Pukoff, Gerald Grubb, Harvey Abramson, Mrs. Max Shaw, Mrs. Winton Peterson, Reginald Smith. Back row: Frank Carr, John Gandsey, Pedro Pina, Walter Marek, Ferruccio Rossi and Joe Miles.

Old Soldier Doesn't Fade, He Teaches Math at ECC

Ex-GIs in William H. Bartlett's math class at El Camino College would probably shape up fast if they had any idea that the eagle eye of a full colonel were fixed upon them. Colonel Bartlett began teaching at El Camino last September after 36 years in the army, two wars, duty in 20 states, command of an artillery battalion which battled in Europe with General George Patton and several decorations for outstanding service during World War II and the Korean conflict. The colonel's service began with graduation from West Point in 1920 and ended with his retirement in 1954. Under General George Patton, the colonel and his unit, an armored artillery battalion, fired 272 nights and days except for one day and night. The stand constituted a consecutive bombardment unequalled in modern times. After the war ended, Colonel Bartlett taught military science at Duquesne University before being transferred to the Far East, where he assumed the duties of assistant G-3 officer and then G-3 in the Eighth Army in Korea from 1948 to 1950. G-3 is a division of headquarters in charge of training. From 1950 to 1951, he served as G-3 in Japan. Transferred to Washington, Colonel Bartlett joined the Inspector General's office for a tour which ended in 1952. During this time he reorganized an entire unit and inspected Army contracts in the Eastern United States. From there he moved to Europe, where he had earlier fought with the Third Army, to assume command of the Southeastern Area Command, a recreation area for military personnel in Europe. Colonel Bartlett spoke highly of American soldiers who came to Garmish, one of the three cities in the area. "They were wonderful," he said. In his earlier days after West Point, the colonel served in the Philippine Islands. Colonel Bartlett's wife is "an old army girl," he says. The couple has one son, who heads a construction company in Florida. Another son was killed during the Battle of the Bulge. Colonel Bartlett is the holder of a chestful of decorations for heroism and outstanding service in World War II and the Korean conflict. He was awarded the Bronze Star with Oak Leaf Cluster, the Silver Star with Oak Leaf Cluster, various campaign ribbons, the legion of merit, and an award from Duquesne University for his services as a military science professor there.



OLD SOLDIERS REMINISCE as Colonel William H. Bartlett, El Camino College instructor of mathematics, chats with students John Kitzrow (left) and Ray Wiswell. The student vets served in Europe at the same time that Col. Bartlett was in command there.

LEGAL NOTICES

CERTIFICATE OF CORPORATION FOR TRANSACTION OF BUSINESS UNDER FICTITIOUS NAME. THE UNDERSIGNED CORPORATION does hereby certify that it is conducting a Steel Fabrication & Erection business located at 939 East 220 Street, Los Angeles County, California, under the fictitious firm name of Associated Steelcraft Company and that said firm is composed of the following corporation, whose principal place of business is as follows: NAME OF CORPORATION: Stern Contractors, Inc. PRINCIPAL PLACE OF BUSINESS: 939 East 220 Street, Los Angeles County, California. WITNESS its hand this 22nd day of May, 1959. NAME OF CORPORATION: Stern Contractors, Inc. Signature and title of authorized officer or officers of the corporation: GEORGE STERN, President. STATE OF CALIFORNIA COUNTY OF LOS ANGELES. ON THIS 22nd day of May, A.D., 1959, before me Howard O. Culpepper, a Notary Public in and for said County and State, residing therein, duly commissioned and sworn, personally appeared George Stern known to me to be the president of the corporation that executed the within instrument on behalf of the corporation therein named, and acknowledged to me that such corporation executed the same. IN WITNESS WHEREOF, I have hereunto set my hand and affixed my official seal the day and year in this certificate first above written. (SEAL) HOWARD O. CULPEPPER, Notary Public in and for said County and State, My Commission Expires August 29, 1962. Filed May 22, 1959—Harold J. Gatz, County Clerk, L. G. Truman, Deputy. S. May 21, June 7-14-21, 1959

Postmen Host Carrier Meet

Torrance mailmen were hosts to the Letter Carriers Association of Southern California in a district meeting at the American Legion Hall May 22. Among the speakers were Ray Wyatt, assistant postmaster here, and Ray Kreyer, state president of the organization. Stanley Lewis, Pacific Coast regional director, spoke on meaning of pending Congressional bills.

Harbor Summer School

More than 100 courses will be offered by Harbor College during the six weeks summer session, from July 6 to Aug. 14, according to an announcement today by J. Reyburn Hatfield, dean of the summer session. Registration will be held June 10 from 10 a. m. to 12 noon, 1 to 3 and 6 to 8 p. m., and on July 6 and 7 from 8 to 12, 1 to 3 and 6 to 8. All students are advised to register June 10 if possible in order to get first choice of subjects and hours.

Announcements CLEAN TOP SOIL TE 4-6392 Free Ottoman (With Each 2-piece Set) Reupholstered Complete labor and material Time payments as low as \$2 weekly CALL US TODAY We Pick Up and Deliver 27 Years Expert Workmanship Large selection of fine materials 667 So. LaBrea, Inglewood OR 4-2922 RAYMOND R. KAHL INVESTIGATIONS Marital - Criminal - Civil Royal H. Millhouse DA 9-5379 Lost and Found Lost Friday Child's light blue glasses, urgently needed. Lost on S. Harvard or 23rd St. on way to school. Call FA 8-3559 Painting and Decorating PAINT Any standard house in the Southwood, Southwest, Torrance, Gardens or Plaza Tract. 1 COAT OF STUCCO VINYL PAINT 1 COAT OF TRIM PAINT \$285 NO MONEY DOWN FHA FINANCING FREE ESTIMATES LICENSED CONTRACTOR FR 2-4717 Building and Remodeling ROOM ADDITIONS ☆ Family rooms ☆ Bedrooms ☆ Kitchens ☆ Baths Free Plans and Estimates 100% Financing Alter Bldg. Co. FA 8-0376 ALL TYPES Of commercial and residential concrete work. Complete patios. Free Estimates Licensed and Insured Day or Night, Call DA 5-0003 Block Wall FENCES HA 1-3124 FR 6-4294 CEMENT WORK—driveways, all types of slab, sidewalks and concrete steps. FA 8-5299. HAVE MORE MONEY by selling unneeded things through Torrance Press want ads. Phone FA 8-2345	Building and Remodeling CONCRETE BLOCK WALLS Cement & Brick Patios FR. 9-2025 Gardening, Landscaping A-1 CLEAN-UP Weeds cut, flower beds cleaned out, trash hauling, new lawns put in, renovating, re-tilling, tropical gardens created. Lawn maintenance. Commercial and industrial well come. OS 6-1692 EXCAVATING & grading, Driveways, lots cleaned, trash hauling, Fill dirt, Trees & buildings removed. GARDENING SERVICE Free estimates. Call Thomas J. Martin. FA 8-8018 after 5:30 p.m. JAPANESE gardener. New idea garden maintenance. All kinds of garden work. DA 9-8595 or DA 3-7179. Lawn Sprinklers Installed—Repaired McCoy Sprinklers PL 9-9537 SKIPLOADER, dump truck, top soil, grading, disc. Driveways and foundations removed. Free Estimates DA 6-7030 TOP SOIL FILL DIRT Lowest Prices Large Loads DA 7-9335 Instruction Now Available in Long Beach I B M Complete Career Training ☆ Tabulating Machine ☆ Keypunch ☆ Secretarial ☆ Gregg Speedwriting in 4 Weeks 3 - 6 - 9 Months ☆ Accounting ☆ Bookkeeping ☆ Clerical Free Placement Service (Tuition Financing Available) CALIFORNIA COLLEGE OF COMMERCE 851 Pine, L.B. HE 4-9747 Orange County. Call KI 3-1753
---	---

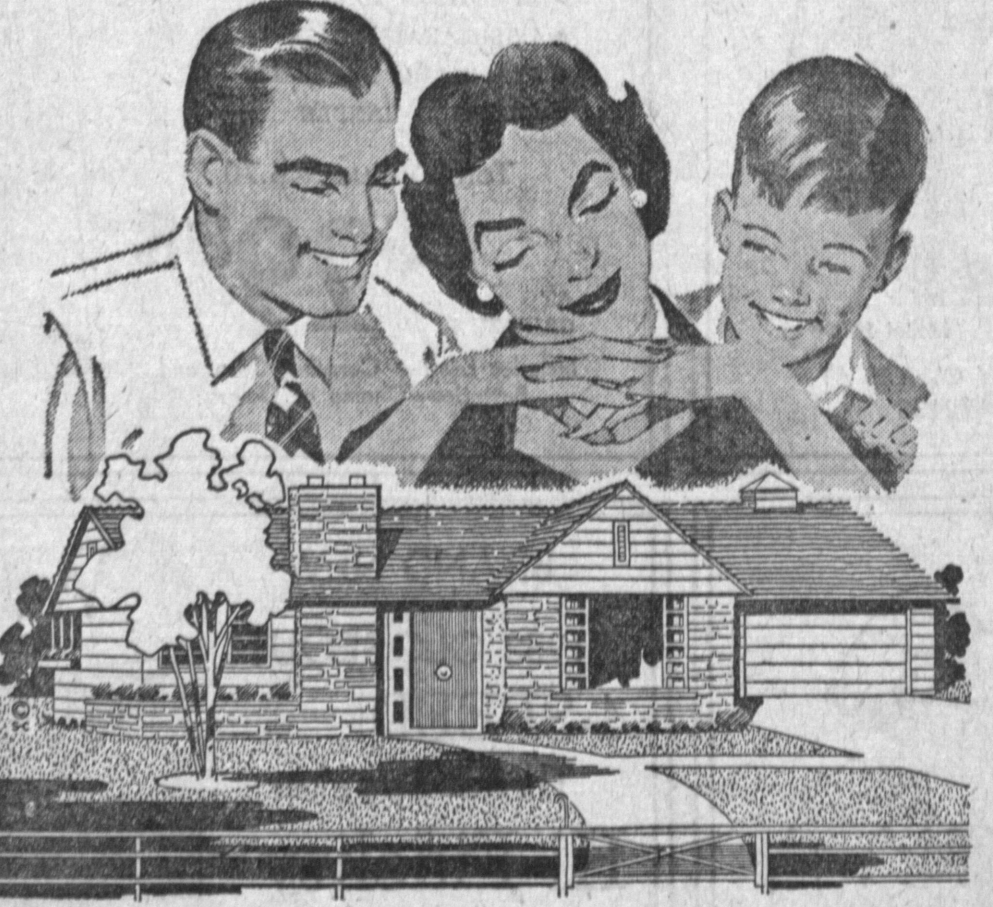
ROOM ADDITIONS

Bedrooms • Family Rooms • Bathrooms • Living Rooms • Dens

HOME REMODELING

Planning to Expand, Remodel or Modernize Your Home? Take Advantage of Our Free Plan and Estimating Service

- Patios
- Garages
- Fireplaces
- Tile Showers
- Cabinet Bars
- Pullman Cabinets
- Remove Partitions
- Sliding Glass Doors
- Modernize Kitchens
- Built-in Cooking Units
- Natural Wood Cabinets
- Block Wall Fencing
- Chain Link Fencing



100% Bank Financing, F.H.A. Terms Up to 5 Years to Pay
Let Us Solve Your Building Problems with Our Complete Home Remodeling Service

NEED "BREATHING SPACE?"

Add A Room Now

MERCURY
 LICENSED AND FULLY INSURED
Construction
 CALL DAY OR NIGHT
FAirfax 8-1461

National Supply Uses Remote Control for Radiographic Test

Radiographic inspection has been made easier, faster, and safer in the Torrance plant of The National Supply Company where it is used extensively to ensure flawless steel castings, forgings and weldments. These advantages have been gained by means of a mobile carrier which provides remote control for positioning and retracting a radioactive cobalt 60 "pill" from behind protective concrete walls. National Supply built an outdoor enclosure to Atomic Energy Commission specifications for radiographic testing. It has concrete walls 18 inches thick and seven feet high. Large parts can be carried into the enclosure by truck through a gate, or by truck-crane over the wall. The mobile unit has a flexible projector tube in which the cobalt 60 "pill" is guided to the point of use from a lead storage safe, and a control unit on the end of a long flexible metallic cable which is unreel to a safe distance outside the walled enclosure. The projector tube is supported in proper position after the radiographic film is in place on the part to be tested. A manually operated crank and gear wheel on the control unit operate a rack-type chain drive which propels the "pill" out through the tubing on the end of a flexible cable to the point of exposure. After exposure, crank-operation is reversed to draw the "pill" back into the lead storage safe. Safety of this method of handling the radioactive material is further in-

Library Service Extension Eyed

Extension of library hours will be discussed during budget sessions, the City Council decided. Request for longer hours at the city's three libraries was requested by the Library Commission in order to provide better service. Additional salary cost of the longer hours was estimated at \$2200 per year.

Airport Corner Lease Denied

A move to lease a corner of Torrance Municipal Airport for a service station site was narrowly defeated by a 4 to 3 vote. The Airport Commission had recommended immediate lease of the 150x150-foot corner in order to receive revenues for the city.



REMOTE CONTROL—The remote, mechanized handling of a radioactive cobalt 60 "pill" for radiographic examination of castings and weldments by National Supply Company in its Torrance plant is provided by this control unit outside the 18-inch thick, 7-ft. high concrete walls of this enclosure. The gate is closed and locked before the "pill" is propelled out of its lead storage safe. A Geiger counter (right) indicates radiation level and assures the safety of those conducting tests.

Use Torrance Press Classified Ads