

ING LOT SALE

One of the most fabulous events in the southwest area will get underway Thursday when Rand Furniture, 14814 South Hawthorne boulevard, starts its three day Anniversary Sale. More than just another run of the mill sales event, this one will feature merchandise from four warehouses with prices your eyes won't believe. Nothing can be returned to the warehouses which means everything must be sold in order to make room for more shipments. Rand's huge 30,000 square feet of display space will be stocked to the breaking point with every imaginable

kind of home furnishings—living room suites, bedrooms, juvenile furniture, bedding, carpeting, rockers, TV chairs, vibrators, dinettes, table lamps, all major appliances, hi-fi and television sets—just name the item and Rand has it. According to store officials, "Our policy is to give the best for the lowest prices at all times. There comes a time, once a year, when we declare an Anniversary Sale in which we clear out all floor samples, odds and ends, soiled merchandise, and anything that has been on our

floor longer than 30 days. This is your opportunity to furnish or replace your old for new, at savings you would not dream possible. Merchandise has been transferred from Rand's four warehouses to the 4 1/2-acre parking lot at the rear of the building. It has been emphasized by the management that there will be no high pressure! Our staff is not permitted to persist or to dog a customer's heels," store officials stated. "We want you to feel free to browse around in leisure."

★ ★ ★
Everything Must
Be Sold to the
Last Piece.

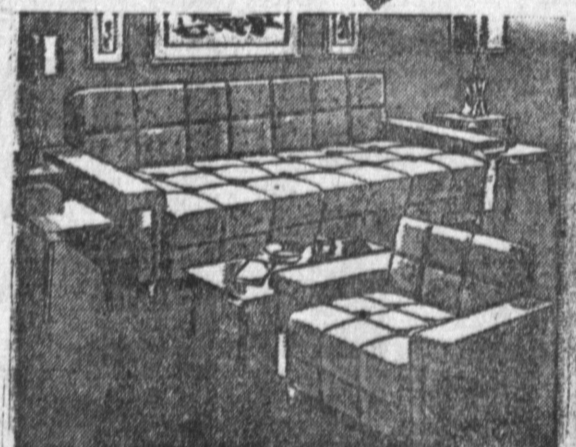
★ ★ ★
Merchandise
Will Not be
Returned to
Warehouse.

★ ★ ★
This is a "Hey-Dav"
For Shoppers!
You Can Share
In These Savings

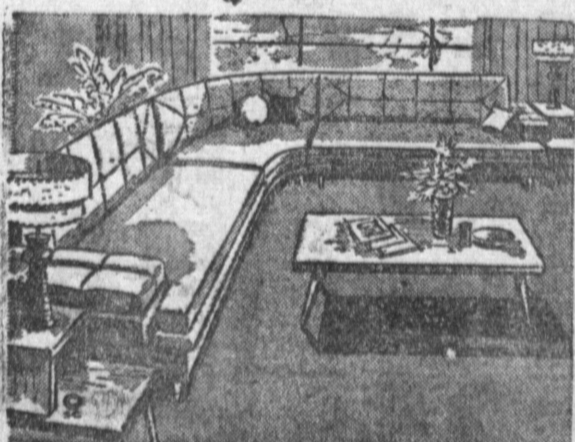
★ ★ ★
Nothing Held Back
Merchandise
Includes . . .

- 1959 Styles & Colors
- 1958 Styles & Colors
- One of a Kind
- FLOOR SAMPLES
- ODDS & ENDS

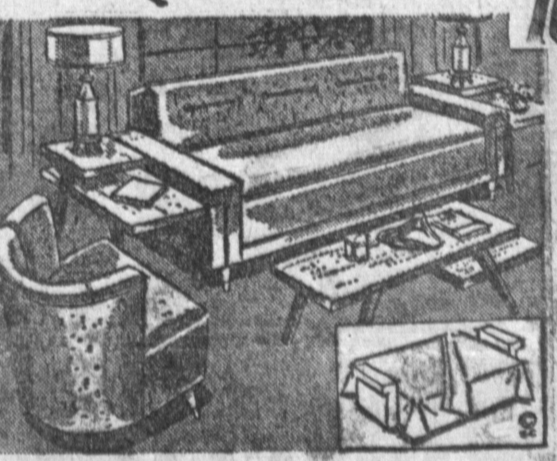
Slightly damaged, shop worn, scratched, etc.
SOLD AT MORE THAN 30% BELOW COST!



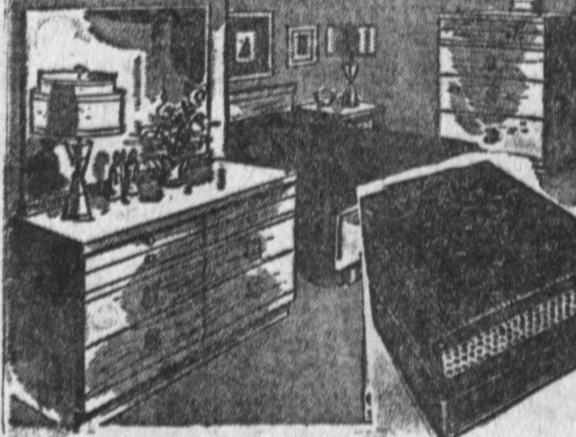
LIVING ROOM SET
Includes: • Sofa and Matching Chair in Various Styles & Colors • 3 Handsome Tables • 2 Table Lamps in your Choice of Size & Styles **\$100**



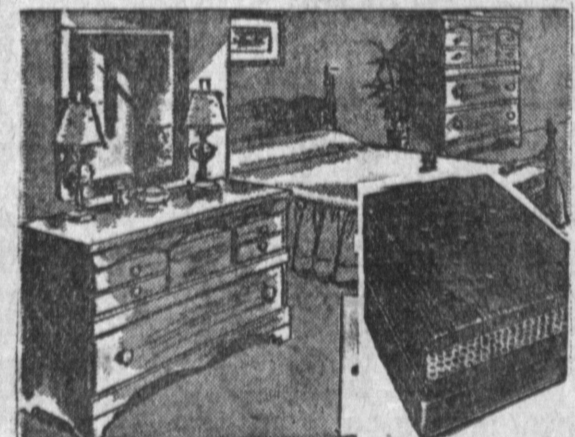
SECTIONAL SUITE
2-Pc. Hardwood Construction with Tempered Coil Springs Long Wearing Fabrics, 3 Table, 2 Lamps Included. Center curve 39.95 additional. **\$100**



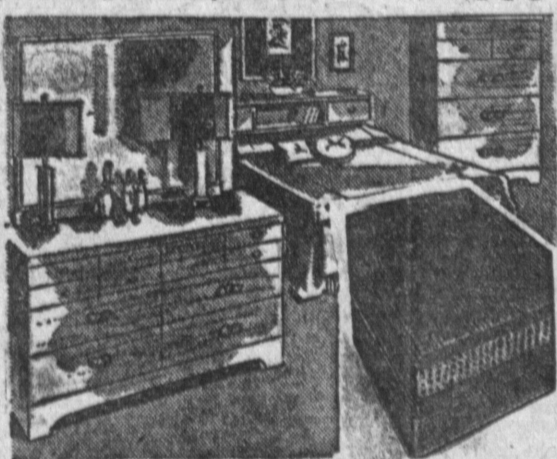
BED DIVAN GROUP
Includes: • Divan • Matching or Swivel Chair • 2 Step End Tables • 1 Coffee Table (Choice of Finish) • 2 Table Lamps **\$100**



BEDROOM SET
Includes: • Large Dresser with Mirror • Full 54" Bookcase Headboard • Dovetailed Drawers • Center Drawer Guides • Plastic Finish Tops • 4-Dr. Matching Chest FREE to first 25 Customers **\$100**



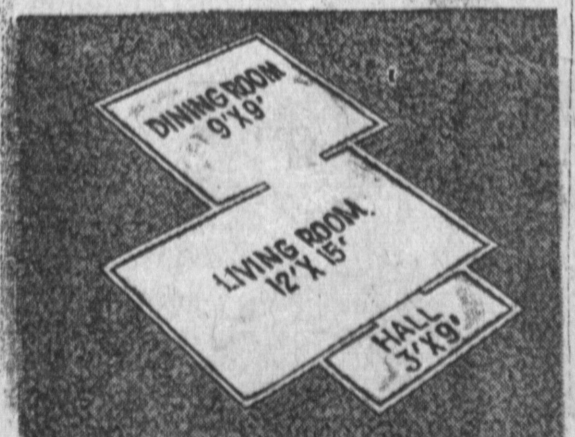
Colonial Bedroom Set
(Honeytoned Salem Maple). Includes: • Dresser with Mirror • Full size Poster Bed • Box Spring • Matching Mattress **\$100**



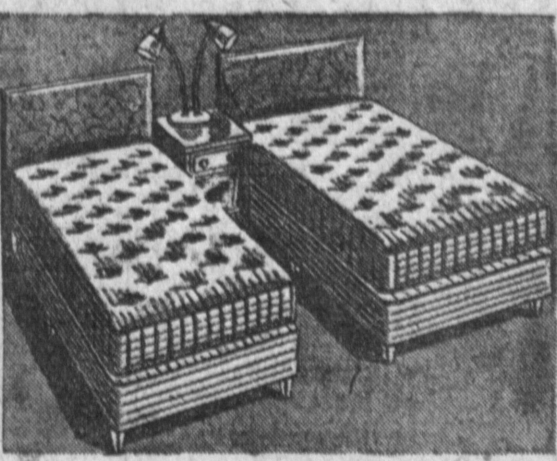
BEDROOM GROUP
Includes: • 6-Dr. Dresser with Mirror • Bookcase Headboard • Box Spring • Innerspring Mattress, Choice of Sable Grey or Charcoal • Free 6.95 Bed Frame to first 25 Customers **\$100**



MODERN DINETTE
Includes: Large 36x48, open to 60", extension table, 6 full size foam chairs, choice of chrome, wrought iron, bronze tone, choice of colors, free utility cabinet in white metal and 16-pc. dinnerware set — to the first 100 customers **\$100**



CARPET SPECIAL
We will cut to size — wall to wall Broadloom nylon viscose including padding—choice of colors, total of 266 ft. of carpeting **\$100**



Hollywood Studio Group
INCLUDES: • 2 twin box springs • 2 twin mattresses • 2 steel bed frames • 1 side stand • 1 table lamp **\$100**

It's a STEAL

5 ROOM OUTFIT!
— INCLUDING —
• 8-PC. LIVING ROOM GROUP
• 8-PC. BEDROOM GROUP
• 4-PC. DEN GROUP (or Second Bedroom)
• 5-PC. DINING GROUP
• FULL SIZE GAS RANGE
• FAMILY SIZE REFRIGERATOR

ALL NEW FURNITURE **\$359**
\$5.00 week — A Furillo Special

CATCH THESE HITS

Box Spring and Innerspring Mattress FULL or TWIN SIZE Mismatched cover Value to 59.00 SALE PRICE **\$15.00**

BUNK BED GROUP 2 beds, 2 springs, 2 mattresses with guard rail & ladder, wrought iron or maple. Regular 89.95 Sale Price **\$57**

9 x 12 RUGS Cut pile boucle, all colors, non-skid backs, beautiful for any rm. Reg. 29.95 Sale Price **\$17**

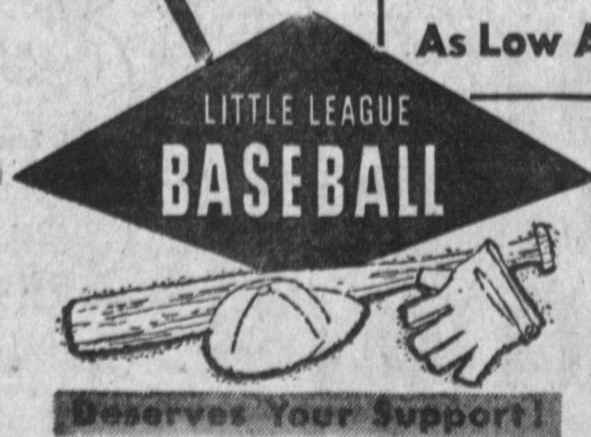
SPECIAL 4-drawer chest, choice of blond or maple finish. Reg. 19.95 Sale Price **\$12**

GRAND OPENING SPECIAL!
Reg. 59.95 FULL or TWIN Box Springs & INNERSPRING MATTRESS **\$29.95** per Set

COUPON MILK STOOLS SOLID MAPLE, Reg. 4.25 **1.49**
Limit 1 per Coupon

THE DIFFERENCE IS RAND

- **BUYING POWER**
We buy by the car load for our 2 big stores and pass the savings on to you!
- **LOW OVERHEAD**
Our rent is low (don't tell our landlord) and we don't have a "Classy" store—just BARGAINS!
- **FAST TURNOVER**
We'd rather sell at cost than let our stock get dusty . . . so things move fast here!
- **CREDIT POLICY**
Liberal—VERY liberal. Most people are amazed at how easy it is to get credit at RAND!



Deserves Your Support!

TERMS — 36 MOS. TO PAY
As Low As No Money Down!

GIFTS for all the Children Bring the Family!

OPEN DAILY
9 a.m. - 9 p.m.
SATURDAY
9 a.m. - 9 p.m.
SUNDAY
11 a.m. - 6 p.m.

SPECIALS FOR THURS.. FRI.. SAT. 9 A.M. - 9 P.M.

RAND FURNITURE

14814 HAWTHORNE BLVD.
BETWEEN ROSECRANS and COMPTON BLVDs., LAWDALE