

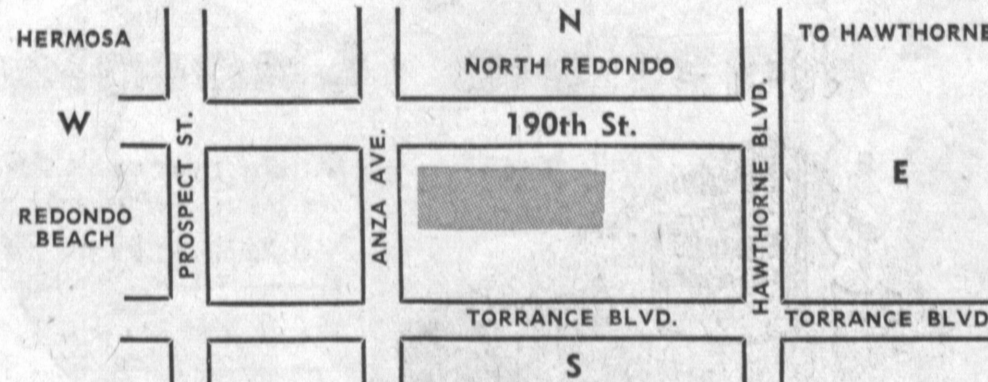


# NORTH TORRANCE SHOPPING CENTER—W. 190th ST. (3 BLOCKS WEST OF HAWTHORNE BLVD.)

## Weekend Winners

THIS WEEK-END ONLY

THURS. - FRI. - SAT.  
MAY 7, 8 AND 9  
SPECIALS!



- JUMBO'S
- TOWNE CLOTHIERS
- ANTHONY'S SHOES
- NONIE AYERS BAKERY
- KARL'S SHOES
- SAV-ON DRUGS
- GILBERT'S 5-10-25c STORE
- FOOD GIANT MARKET
- DR. DANIEL B. MONT, OPTOMETRIST
- HAMMOND LAUNDRY AND DRY CLEANERS
- RECORD NOOK
- DOMINGUEZ WATER CO.

### Modern, New, Convenient Shopping Center

### Shop and Save the Neighborhood Way!

*Friendly Courteous Service*

**WEEK-END SPECIALS**

REG. \$1 PLASTIC DRAPES **77c**  
27x87—Assorted Patterns  
SPECIAL

Chicken-Feather Filled  
BED PILLOWS **97c**  
Reg. \$1.79—Assorted Pastel Colors

18x29 BATH MAT SETS **\$1<sup>37</sup>**  
WITH MATCHING SEAT COVER

**Gilbert 5-10-25c Store**  
NORTH TORRANCE SHOPPING CENTER  
OPEN SUNDAY 10 A.M. TO 5 P.M. WEEK DAYS 9:30 A.M. TO 9 P.M.

### Plenty of Free Parking

Visit Our New  
**ARTIST'S SUPPLY SECTION**

Featuring a Complete Line of Grumbacher Brushes, Colors and Artist's Materials.

**JUMBO'S**  
TOYS — HOBBIES — SPORTING GOODS  
4864 W. 190TH ST., TORRANCE FR 2-8017  
YEAR-AROUND LAYAWAYS S&H GREEN STAMPS

*Friendly Courteous Service*

**For The Hot Summer**

Wash and Wear **SLACKS** Cool — Lightweight **SUITS**

Take your choice of the new summer weights. A blend of 55% dacron and 45% rayon or the new 70% acrilan 30% rayon, light weight flannels. Both groups are completely Drip Dry and wrinkle resistant fabrics. Sizes 28 to 42.

Compare to suits selling at \$45 and \$50 and you will agree that this is an outstanding special. A blend of 65% dacron, 35% rayon woven to give the look of expensive light weight worsted. Holds a crease, flicks off wrinkles and hangs out quickly. Cool, comfortable and good looking. A nice selection of colors to choose from.

Regular **\$7<sup>88</sup>** **\$34<sup>88</sup>**  
\$9.95

**Towne Clothiers**  
4850 WEST 190TH STREET TORRANCE  
NEXT TO FOOD GIANT FR 2-5443

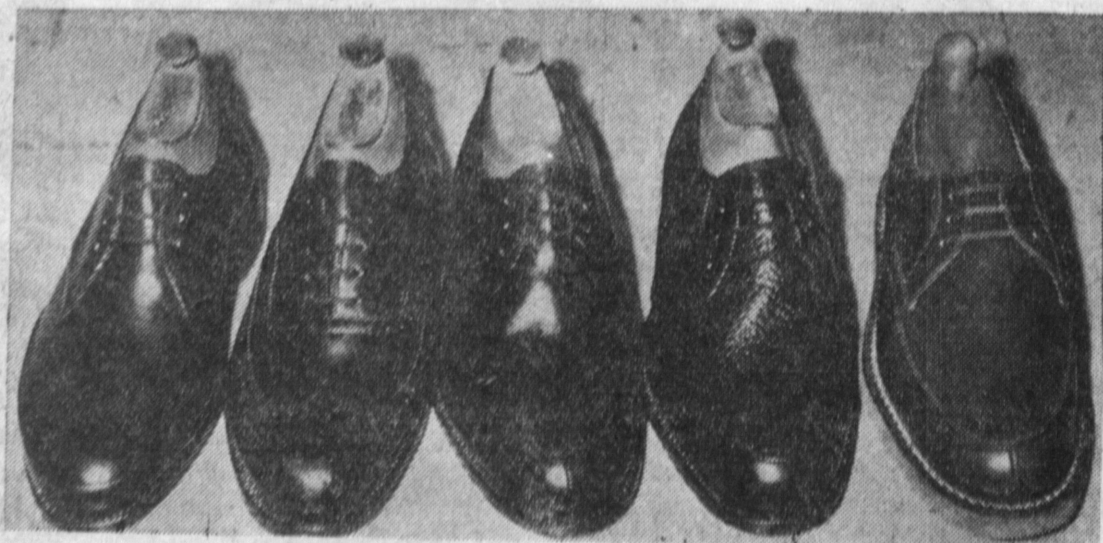
CHARGE ACCOUNTS INVITED  
No Interest or Carrying Charges  
Payments Made to Fit Your Budget  
WE GIVE S&H GREEN STAMPS

WE GIVE S&H-GREEN STAMPS

## ANTHONY SHOES

IMPORTS FROM EUROPE

### 1000 Prs. Men's Shoes



**YOUR CHOICE**  
You Get Exactly What You See ... \$15.95 Value..... **9<sup>88</sup>** Pair

Step into comfort and good looks . . . these imported shoes are fully leather lined, have leather soles and rubber heels. Fine quality leather in black or brown.

All Sizes, 6 to 12, A to EEE  
Available Only at

**ANTHONY SHOES**  
4868 West 190th Street North Torrance Shopping Center  
3 Blocks West of Hawthorne Blvd.  
EXPERT SHOE REPAIRING ON PREMISES

## JUMBO'S

TOYS HOBBIES SPORTING GOODS ARTIST SUPPLIES

We Give S&H Green Stamps

Phone FR 28017 • Torrance • 4864 West 190th St.

\$19.95 Value—Inflatable  
**4-RING POOL**

Size 84"x20". Deep, heavy gauge Krene, guaranteed not to chip, crack, peel or mildew. Sidewall drain, new flush valves. Includes vacuum cleaner hose adaptor for easy inflating and repair kit. \$19.95 value.

**10<sup>88</sup>**

**SLEEPING BAG**  
Excellent for Boy Scouts

Green Sierra Poplin cover, Water-proof bottom, Quilted throughout, sewed on tent flap, packed in poly bag, 3 lb. nylon and wool filled, temperature tested to 18 degrees. \$15.95 value.

**11<sup>88</sup>**

Regularly 98c

**"Little Orby"**

**77c**

**TENNIS RACKET**

RAWLINGS "BRIGHT STAR"  
\$5.98 Value **2<sup>99</sup>**