



**NEWEST MODEL**—Inspecting the Mark II Austin Cambrian Italian-styled sedan, Bob Greenwald, owner, and Bruce McDonald, sales manager of Newcastle Sports Car Centre, 700 Pacific Coast Hwy., Hermosa Beach. The Cambrian has the same basic engine as the MG, which is almost an institution among sports car owners. It will have a top speed of more than 85 miles per hour and combines rapid acceleration with the comfort of a family sedan.

### Fair Backers Waiting for Governor's Appointments

Torrance's chance to be the site of an international fair in 1963 will be decided within a month. Spencer Moore, executive vice-president of California World's Fair, Inc., announced that an 1100-acre site southeast of Avalon Blvd. and 190th St. is one of six now under consideration. He said that actual decision which of the six possible locations in Southern California to accept will have to be made after Gov. Brown appoints a 150-man commission.

**Near Deadline**

The decision will have to be made by the middle of May since it will take all the remaining time to construct the permanent buildings in time for the 1963 opening.

Monroe appeared before the Harbor District Chambers of Commerce Thursday to give a progress report and to enlist support in speeding the governor's action.

He said that a formal announcement of fair plans will be made today at 3 p. m.

Fair officials have been negotiating with the Dominguez Estates Co. for use of land between Avalon and Wilmington Bldvs. and south of 190th St.

**Freeway Hub**

Originally the fair officials had boomed for this site because it is served by four freeways either in existence or expected to be complete. They are the Harbor, Long Beach and San Diego Freeways and Artesia expressway.

But this week Monroe said that he cannot advocate any particular site, but that this task will have to be undertaken by the commission as soon as

### New School to Be Dedicated

Jefferson Elementary School, which opened earlier this school year, will hold dedication ceremonies and open house next Wednesday, while three other schools—Riviera, Walteria, and Perry — will hold open houses next week.

Principal George Marich said that Jefferson's dedication rites will begin at 7:30 p. m. Wednesday at the school, which is located at 21717 Tallman St.

The Riviera School open house is scheduled from 8 to 10 p. m. on Wednesday, while Walteria's will be from 7 to 8 p. m. on the same night. Perry School will open its doors at 8 p. m. Thursday.

Other possible sites which have been submitted include the Baldwin Hills Golf Club Park, Irvine Ranch in Orange County, Bartholomew Ranch near Pomona, and Platt Ranch

### Ryan Appoints New Executive

Max C. Wilson, for 17 years with Boeing Airplane Company, Seattle, has been appointed manager of material of the Ryan Torrance Plant.

He was most recently weapons support equipment procurement manager in the Pilotless Aircraft Division at Boeing, and throughout his employment at the Seattle plant had been in the material department.

Wilson attended Brigham Young University, Provo, Utah, majoring in mathematics. He is married and has five sons, and has served as an adult volunteer with the Boy Scouts for 20 years.

The \$400,000,000 exposition will have all permanent buildings, which will remain after the fair closes. It will be considerably larger than the Brussels Fair now in progress in Belgium.



MAX C. WILSON

**SHRINERS MEET**

A past presidents' stag meeting will be held by the South Bay Shrine Club Thursday at 8:30 p. m. in the Pen and Quill Restaurant, Manhattan Beach, according to President Guy W. Brundage.

**ARV'S**  
**RADIATOR**  
**SHOP**

18104 Prairie Ave.  
FR 4-0430

**CAL-GYM**

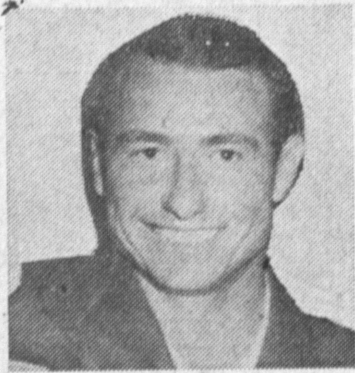
LIKE YOU SEE ON TV . . .

NOW \$1.00 PER WEEK

1321 1/2 SARTORI AVE. FA 8-0350

Above Allen Jewelers—Downtown Torrance

### George Clay to Head Moose Following Vote



GEORGE W. CLAY

George W. Clay was elected Governor of the Torrance lodge of the Loyal Order of Moose fraternity at the annual election of the lodge held Monday, and will be installed in office in public ceremonies to be held later this month, according to an announcement released this week by James A. Evans, secretary.

The Governor-elect, his wife Joyce, and their six-year-old daughter Andrea have been residents of Torrance for the past nine years. Clay, a native of Arkansas, has been a trustee of the Torrance lodge for three years. He is employed by the Long Beach Oil Development Co. and resides at 1115 Fonthill Ave.

Joe Marley, this year's lodge treasurer, was elected to the office of junior governor, while

Carter Dow was named to fill the treasurer's chair. Douglas Dixon won the race for lodge prelate, and Hank Kolter succeeded Clay as the lodge trustee for the next three years.

(Picture note: Mr. Clay can be reached at FAirfax 8-8440, 1115 Fonthill, Torrance, for a picture appointment.)

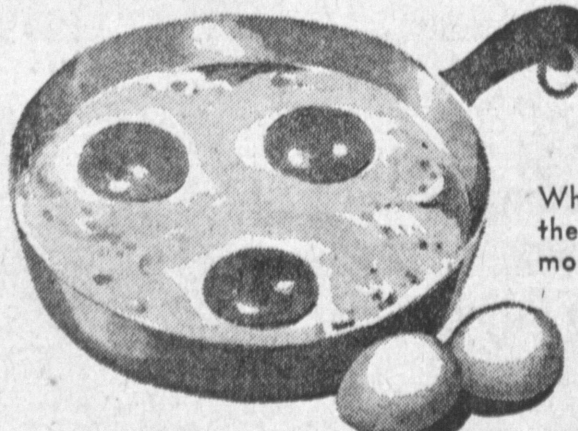
The lodge will present a charity "Fish-ry" at the lodge hall, 1744 W. Carson st., next Friday, April 10th, at 6 p. m., with all proceeds going to the Little Company of Mary Hospital, James D. McCune, Governor, announced this week.

The dinner, sponsored jointly by the lodge and the Women of the Moose, will be open to the public. Tickets will be available at the door.

**STEAL GOATS**

Theft of two mother goats and two kids while he was away was reported to police Thursday by Mel Ibarra, owner of a farm at Valerie and Emerald Sts. He said the animals were valued at \$150.

**ALL CURRENT LOANS** of Former Torrance Loan & Jewelry Co. may be redeemed at **ELLIS LOAN AND JEWELRY COMPANY** 1639 Cabrillo Avenue Torrance (Next to Bus Station) FA 0-0575



## FRESH!

## FOOD GIANT

When we say fresh, we mean our eggs are farm-fresh . . . fresh-as-the-morning . . . delivered FRESH to each of our markets each morning. Try them! They're unconditionally guaranteed.

**3 WONDERFUL SALE DAYS**  
Mon.-Tues.-Wed., April 13-14-15

Fresh • Large "AA" • Bonnie

# EGGS

# 39

Every Egg Guaranteed Strictly Fresh • Dozen in Carton

From Red Ripe Tomatoes

# HEINZ KETCHUP

Large 14-oz. Btl. Reg. 24c Value



## CAMPBELL'S TOMATO SOUP

3 Tall 10 1/2-oz. Cans 29c



N.B.C. • CRISPY • FRESH • 1-lb. Pkg. **SNOWFLAKE CRACKERS 25c**

## ARDEN'S • LOAF CHEESE

2 -lb. Loaf 59c

BUILDS RICH RED BLOOD

**SKIPPY**

**DOG FOOD**

4 Tall No. 1 Cans 25c

PREAM Reg. 35c

## FOOD GIANT'S • ALL PURPOSE • Price Includes "10c Off" Label

**ENRICHED FLOUR 10-lb. Bag 79c**

FARM FRESH PRODUCE

**Asparagus 10c/lb**

• FRESH • LONG • GREEN • SWEET • JUICY • ARIZONA

**Grapefruit 5c/ea.**

DELICATESSEN

**WIS-PRIDE CHEESE 35c**

Sharp In Wedges 8-oz.

Assorted Flavors 6-oz. Cup 35c

**GUARANTEED MEATS**

FOOD GIANT'S **Ground BEEF 43c/lb**

Fresher 'n Leaner • Tasty • Delicious

**GROUND CHUCK 59c**

Perfect for Any Use

**GROUND ROUND 69c**

Ex. Lean Juicy

**FRYERS 39c/lb**

Fresh-Frozen • Pan Ready

**BREADED SLICED BACON 49c**

1-lb. Pkg. PRODUCT OF OSCAR MAYER

**FISHSTICKS 33c**

8-oz. Pkg.

- FLORIENT • Floral DEODORIZER 6-oz. Bomb 79c
- BEADS 'O BLEACH BLEACH • Dry 18-oz. Box 42c
- TREND • Liquid DETERGENT 22-oz. Can 53c
- NEWS DETERGENT Giant Box 53c
- SWEETHEART TOILET SOAP 2 Bath Bars 33c
- BIRDS EYE • Frozen BROCCOLI CUTS 10-oz. Pkg. 19c
- PURR CAT FOOD 2 6-oz. Cans 27c
- BEADS 'O BLEACH BLEACH • Dry 33-oz. Box 75c
- TREND DETERGENT Giant Box 49c
- SWEETHEART TOILET SOAP 3 Reg. Bars 35c
- OLD DUTCH CLEANSER 14-oz. Cans 29c
- BUMBLE BEE • Solid Pack TUNA • White Meat No. 1/4 Can 39c
- STOKELY APPLE SAUCE 2 8-oz. Cans 25c

**OPEN SUNDAY**  
FROM 11 TO 4 P.M.

**BURKE'S**  
PATIO AND OUTDOOR FURNITURE

**Discount Prices!**

Large 21-inch **BAR-B-QUE**  
Now at Discount Prices of Only **\$12.95**

Aluminum Folding **CHAISE LOUNGE**  
Covered in long lasting Seran, in your choice of Green & Yellow or Green & White. Adjustable back. **\$8.95**

Aluminum Folding **Beach & Lawn CHAIRS**  
Covered in Seran or Vinylon, just the thing for the patio or fold them up and take them to the beach. **\$3.95**

2" Heavy Sequoia Redwood **6 Ft. Table and 2 Benches**  
Regular \$21.95 Now Only **\$14.95**

**7 Ft. BEACH UMBRELLAS \$7.95**

LARGE ASSORTED TABLE UMBRELLAS . . . \$13.95 up  
CHAISE & CHAIR PADS . . . \$3.95 up

Aluminum Chaise Lounge WITH 3-INCH PAD **\$13.95**

**BURKE'S BARGAIN SPOT**  
2113 Torrance Blvd. Torrance FAirfax 8-5769  
Daily 9-6—Fridays 9-9—Sundays 11-4  
FREE PARKING IN REAR OF STORE  
WE CARRY A COMPLETE LINE OF OUTDOOR FURNITURE

**SOUTH TORRANCE** Highway 101 at Hawthorne  
**NORTH TORRANCE** 4848 W. 190th St. at Anza