

Continuing the Celebration of Our

GRAND OPENING

4 BIG DAYS — Thurs., Fri., Sat., Sun., April 2, 3, 4, 5

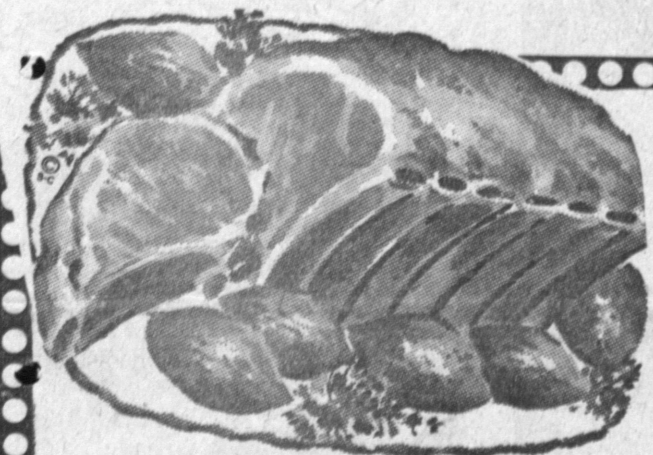
**ALL STORES;
ALL DEPARTMENTS
COMBINE, TO
LOWER YOUR TOTAL
FOOD BILL!**

910 W. Santa Barbara
at Vermont

FOODS CO. markets

Pacific Coast Hwy
and Crenshaw

174th and
CRENSHAW



Best Center Cut
Pork Chops 69¢^{lb}

FANCY, FRESH, PINK, LEAN
PORK LOIN

FULL RIB
HALF, 5 to 7-lbs.
LOIN END
ROASTS, 2 to 3-lbs.
END CUT CHOPS

45¢^{lb}



Utah Type, All Green Jumbo — 2½ to 3 Lb. Weights

CELERY

Fresh and Crisp
and It's Jumbo In Size.
You'll Be Amazed at This
Super Foods Co. Value

10¢^{ea}



SPRINGFIELD TOP VALUE CANNED GOODS

TENDER SWEET PEAS 16-OZ. CAN

DARK RED KIDNEY BEANS 16-OZ. CAN

SLICED BEETS 16-OZ. CAN

WHOLE COOKED POTATOES TALL 15½-OZ. CAN

TOMATOES TALL 15-OZ. CAN

GREEN BEANS 15½-OZ. CAN

APPLE SAUCE 16-OZ. CAN

BUTTER BEANS 14½-OZ. CAN

TOMATO CATSUP 12-OZ. BOTTLE

PORK and BEANS 14½-OZ. CAN

10 ITEMS FOR \$1.00

YOUR CHOICE
MIX 'EM
IF YOU WISH



SPRINGFIELD HAWAIIAN
HALF SLICES

PINEAPPLE

14½-oz. Large Flat Cans
7 \$1.00



SPRINGFIELD — HALVES or SLICES
YELLOW CLING

PEACHES

Big 2½ Cans 1-lb., 13-oz.
5 \$1.00



All Regular 5c Items

CANDY, GUM or MINTS

HERSHEYS, WRIGLEYS,
MARS, BABY RUTH,
BEECHNUT, M & M's,
EVERYTHING

YOUR CHOICE
3¢^{ea}
6 pack 18¢



29c NESTLE'S CHOCOLATE

MORSEL'S

FOR
TOLL
HOUSE
COOKIES

5

Large 6-oz. Cello Pkgs.

\$1

Save 35c on 5 pkgs.

TURN PAGE FOR BIG FOOD BARGAINS →