

Torrance Wins Safety Recognition

City employees attained the best safety record in cities employing 500 or more during the year 1958.

Announcement of the award, to be presented by the Los Angeles Chapter of the National Safety Council, was made this week.

The plaque will be awarded to Torrance representatives at a banquet to be held in the Ambassador Hotel March 25 and later will be presented to the City Council.

City officials praised the work of the foremen's safety committee for cutting the number of on-the-job accidents and the winning of the award.

Six Torrance industrial plants also were singled out for honors in the safety division. They are Ryan Aeronautical, Shell Chemical, Stauffer Chemical, General Petroleum, Columbia-Geneva Steel and National Supply.

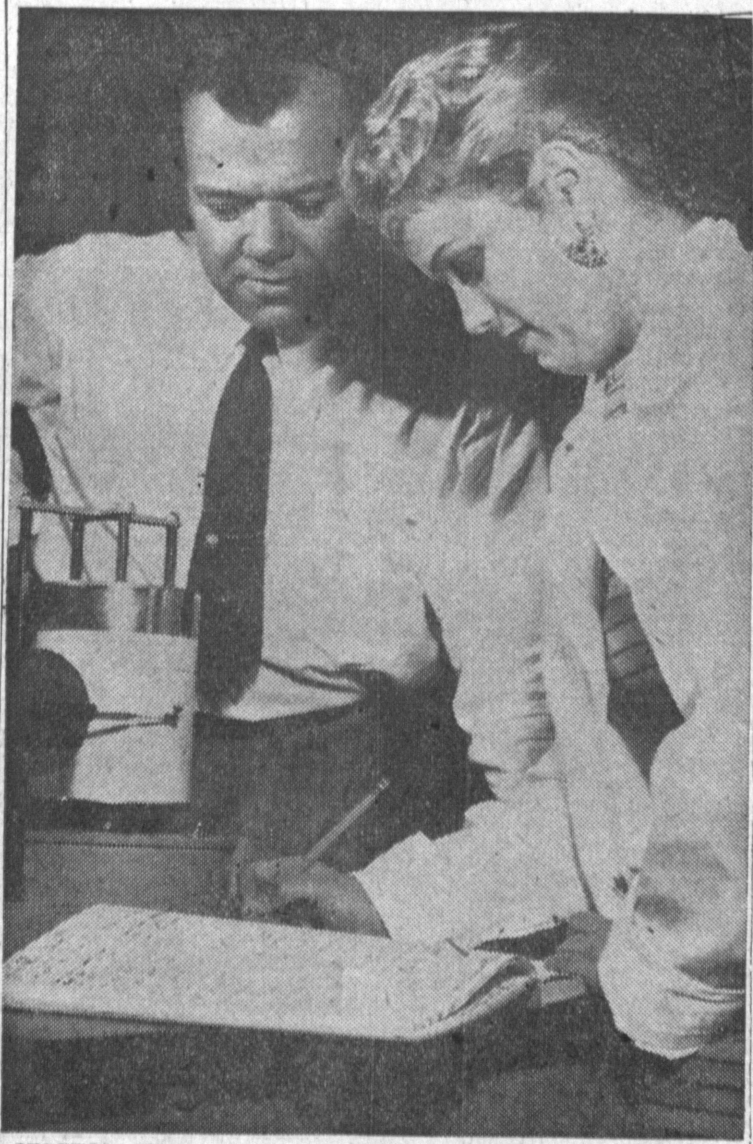
Easter Egg Hunt Slated by Home Owner Group

More than 3000 candy eggs will be hidden for an Easter hunt to be sponsored by the Southwest Park Improvement Association March 28 at 10 a.m.

Youngsters who reside west of Anza Ave. are asked to report to the Flavian School, while those residing east of Anza, are to report to the Carl Steele School where the goodies will be hidden, according to Mrs. Eva Bisou, president of the association.

OBITUARIES

ARMSTRONG, WESLEY JULIUS, born in Colorado June 11, 1884. Services were held March 14, 1959 at Chapel of the Chinese, Inglewood. Rader, Virgil L. Hapvy, Interment, Inglewood Park cemetery. HALVERSON MORTUARY in charge of arrangements. Survived by son, J. Richard Armstrong, 2 sisters, Mrs. Nell Dunn and Mrs. Jesse Mensch.



KEYS TO CAR—Pascall Dilday (right), widely known San Pedro Lincoln-Mercury dealer, turns over the keys to Fred A. Miller, new owner of the Mark IV limousine. Miller is a resident of Palos Verdes Estates and serves as chairman of the board of International Electronic Research Corporation. Helping to celebrate the inaugural run of the Mark IV limousine are Frances McHale, television actress and model and former queen of the San Pedro Fishermen's Fiesta.

Scout Center to Get Under Way

Construction of the Torrance Scout Center is off to a good start. W. W. Walton, general chairman, announced this week. He said that presently foundation work, ground plumbing and rough electrical work is being undertaken at the center on Plaza del Amo. The Kiwanis Club has accepted the responsibility of the foundation construction.

Other clubs and individuals are invited to donate their time in the construction work. Funds are derived by the non-profit organization through a fireworks stand operated in cooperation with the Torrance Junior Woman's Club.

Mother Nabbed for Forgeries

The mother of three young children was arrested on suspicion of passing three forged checks for \$95 Wednesday. The woman, Mrs. Clara May Kline, 27, of 1933 Beckworth St., assertedly obtained all cash for the checks, Det. Sgt. Mickey Fisher said.

Parking Tickets Lead to Arrest on License Lack

Ernest Williams, 44, of 16344 Wilton Place, will appear for trial April 8 on charges that he has driven 12 years without a valid operator's license. Williams was arrested Wednesday by Torrance police on warrants issued when he allegedly failed to pay 11 overtime parking citations. Officers said that when they checked the records, they found that the iron worker's license was suspended in 1946 under the state's financial responsibility law. They charge that the defendant was using a fictitious name. Municipal Judge Otto B. Willet set bail at \$325 at his arraignment Thursday.

Income Tax Service
FR 5-2545
EVA M. SIMMONS
Formerly with the Internal Revenue Bureau
1905 S. CATALINA AVE.
REDONDO BEACH
Open Eve's by Appointment

PRE-OPENING SPECIAL
American Gym Harbor Area
Register NOW
\$2.50 PER MONTH
for a course especially designed for you!
for 25 Club Members Only!
OVERWEIGHT
—LOSE
• 3-4" off waist
• 3-4" off hips
• 3-4" off thighs
• 15-25 lbs. bodyweight
GUARANTEED WRITING RESULTS FOR MEN & WOMEN
AFTER 143 lbs.
HEATED POOL
AMERICAN GYM
26327 S. Western
Call Now—10 a.m. to 7 p.m.
DA 6-9828

WATCH FOR
Grand Opening
SATURDAY, MARCH 21
Taff's Trampoline Center
2271 WEST 101 HIGHWAY LOMITA, CALIFORNIA
SALES AND INSTRUCTION, RECREATION
The New, Exciting, Enjoyable Way to Reduce and Maintain Physical Fitness
Davenport 5-1244
• MONTHLY MEMBERSHIPS AVAILABLE
• SEMI-PRIVATE CLUB
AVAILABLE TO ADULTS AND CHILDREN

Shell Develops Synthetic 'Natural' Rubber in Torrance

Polyisoprene rubber, the man-made duplicate of tree-grown rubber, is going into commercial production and use for the first time.

United States Rubber Company has begun production of truck tires made of polyisoprene rubber which is manufactured by Shell Chemical Corporation's Torrance plant, for sale at a price which is competitive with that of the natural product.

The announcement, which was made jointly at a press conference by D. W. Walsh, Pacific Coast sales manager, tire division, U. S. Rubber, and J. P. Cunningham, manager, synthetic rubber division of Shell Chemical, is regarded as highly significant for the rubber industry and vital from a military standpoint.

The commercial availability of polyisoprene rubber, the executives pointed out, will free the United States completely from dependence on foreign sources of natural rubber in times of emergency. Until now it has been necessary to use natural rubber in all large tires for both military and civilian use.

U. S. Rubber has adopted and expects to extend the use of polyisoprene rubber as rapidly as its production will permit, Walsh said.

Initially, polyisoprene truck tires are being produced in the rubber company's Los Angeles plant in the popular 7.50-20 size. The company will expand production to additional truck tire sizes, off-road tires, aircraft tires, white sidewall passenger tires and other products now requiring natural rubber as the supply of the new synthetic increases.

Shell Chemical will manufacture and sell the new material under the trade name of Shell Isoprene rubber, Cunningham said. It is currently being produced by part-time utilization of commercial equipment located at various Shell Chemical and Shell Oil Company installations in the Los Angeles area.

CLIP AND SAVE
THIS COUPON IS WORTH
\$2.00
ON ANY SERVICE CALL
March 8, 9, 10 only
CAPITOL TV 646 S. Hawthorne
OS 6-2020

To Most PEOPLE...
... who wear glasses, looking well is almost as important as seeing well. And, the variety of fashion-right frame styles now being shown at Soss, Optometrists makes selection of new glasses an exciting adventure in improving your appearance.
TASTEFULLY SHAPED, ALL-OCCASION FRAMES for both men and women are offered in a wide range of color tones, and advanced design assures proper fit and lasting comfort. If you are planning to get glasses or a change in prescription, by all means come in and see how much better you will look with a pair of these modern frames expertly fitted.
32 Years in Harbor Area
Open Friday Evenings Until 7 p.m.
and Saturdays Until 1 p.m.
DRS. SOSS & KLINE
OPTOMETRISTS
1268 SARTORI AVE., TORRANCE — FA 8-6602
810 Avalon, Wilmington 37 Pine, Long Beach



He's "in" when he's out thanks to the Electronic Secretary Automatic Telephone Answering Unit

This television repairman has solved the problem of being in two places at once.

Now he can make his service calls and still answer the phone!

With the help of an Electronic Secretary Automatic Telephone Answering Unit, all incoming calls are recorded while he's out. By playing back the recordings upon his return, he knows immediately where he's needed next.

The Electronic Secretary Answering Unit automatically answers the phone and takes messages 24 hours a day. It permits proprietors of one-man businesses to leave their offices and shops, yet "stay in touch." It keeps their establishments "open" when they're away.

The Electronic Secretary Answering Unit makes any phone do more. Call your local telephone business office to find out what it can do for you.



NEW VEEP—George B. Cushing has been elected vice-president in charge of personnel and public relations, advertising and publicity for the National Supply Co.

GENERAL TELEPHONE
America's Second Largest Telephone System

ARE THE APPLIANCES YOU WANT MOST IN THE NEW HOME YOU PLAN TO BUY?

MEDALLION HOME
LIVE BETTER ELECTRICALLY

Every MEDALLION HOME has an all-electric kitchen with electric range and oven —and more from this list of additional appliances:

- electric DRYER
- electric WASHER
- electric DISHWASHER
- electric REFRIGERATOR
- electric WATER HEATER
- electric GARBAGE DISPOSER

The Medallion Award on a new home guarantees you major electrical appliances, already installed. And you get adequate wiring for today and tomorrow... plus lighting which is both functional and beautiful.

So look for the Medallion — national symbol of better housing and modern electric living. It identifies today's best new-home buys in every style, size, location and price range. No family should buy a home without the Medallion Home award.

SOUTHERN CALIFORNIA **Calson** COMPANY helps you LIVE BETTER—ELECTRICALLY
See your appliance dealer today... it's all-electric value time.