

THE Garrard

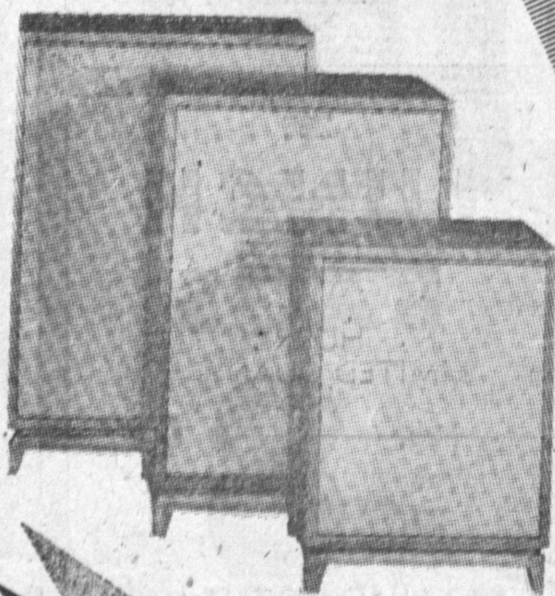
Serving the owners of Garrard— world's finest record playing equipment— and other discriminating listeners.



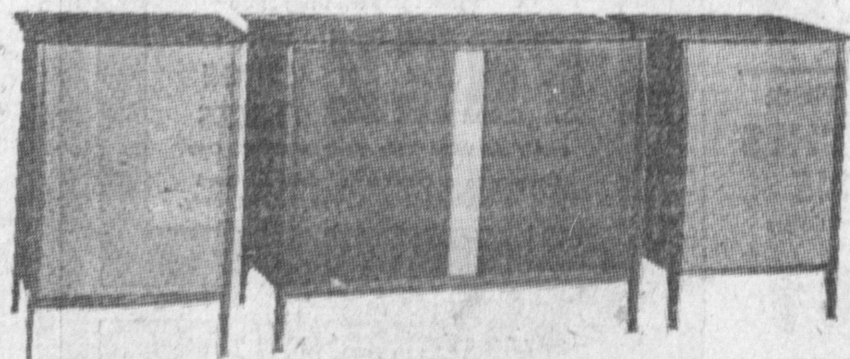
Model 4HF

(stereo-engineered and wired)

STEREO can be good looking too...



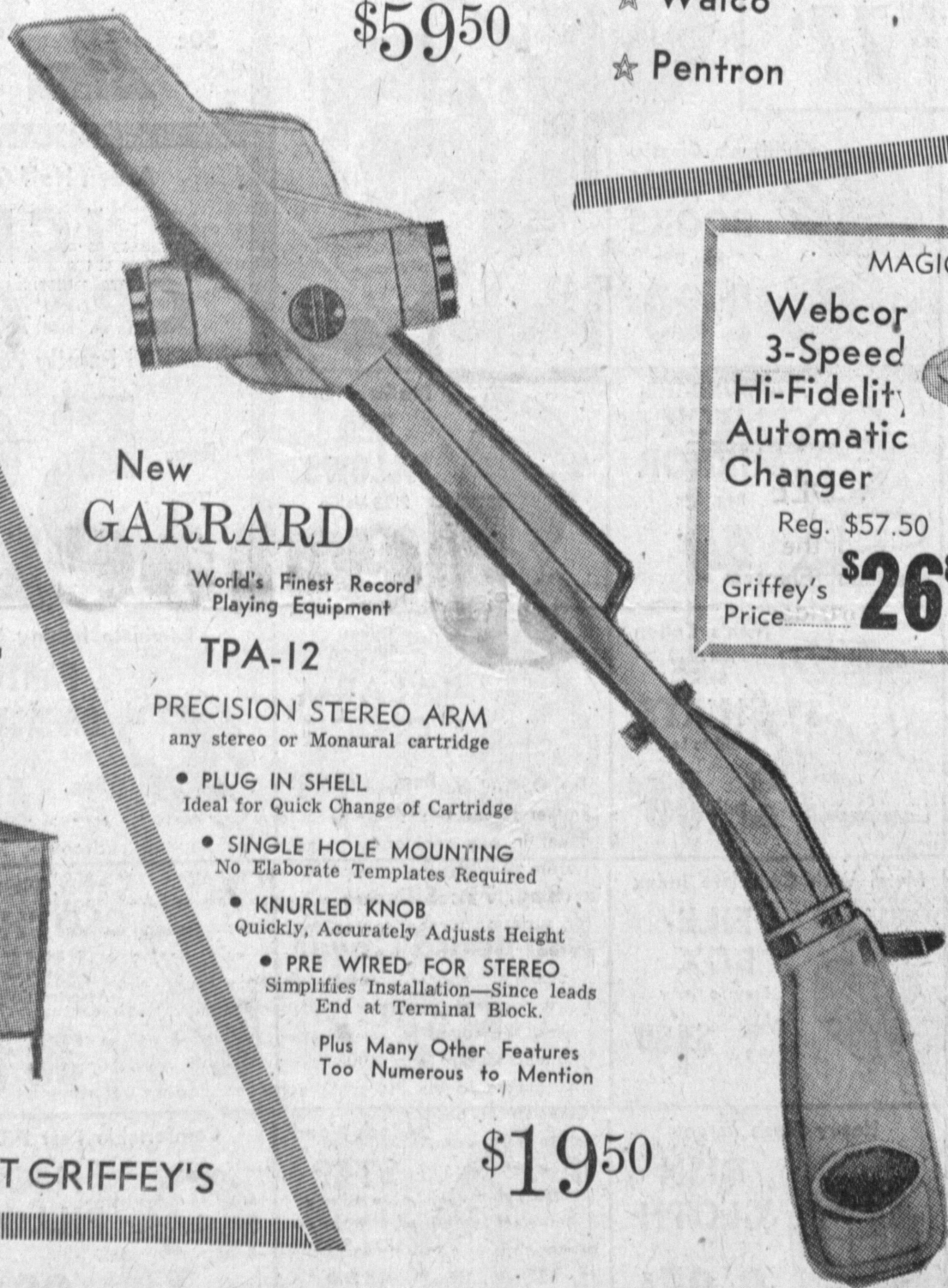
ACOUSTI-CRAFT
A DIVISION OF CREATIVE PRODUCTS, INC.
ANY STYLE—ANY SHAPE



... NOW ON DISPLAY AT GRIFFEY'S

Subject: A New Deluxe Garrard Palyer
This new Garrard precision player is basically a four speed deluxe transcription turntable and transcription tone arm— combining in one unit the distinguishing qualities of both. Already mounted on a single unit plate for simplest installation, the 4HF forms a superb instrument.

Complete at only **\$5950**



New GARRARD

World's Finest Record Playing Equipment

TPA-12

PRECISION STEREO ARM
any stereo or Monaural cartridge

- PLUG IN SHELL
Ideal for Quick Change of Cartridge
- SINGLE HOLE MOUNTING
No Elaborate Templates Required
- KNURLED KNOB
Quickly, Accurately Adjusts Height
- PRE WIRED FOR STEREO
Simplifies Installation—Since lead End at Terminal Block.

Plus Many Other Features Too Numerous to Mention

\$1950

You Are Invited to GRIFFEY'S

Thursday, Friday and Saturday

HI-FI

We Feature These Famous Makes:

- ★ Fisher
- ★ Garrard
- ★ Leak
- ★ Gray
- ★ Harman-Kardon
- ★ Madison Fielding
- ★ Webcor
- ★ Walco
- ★ Pentron
- ★ Jensen
- ★ Wharfdale
- ★ Viking
- ★ Craftsman
- ★ Pickering
- ★ Ruxton
- ★ Sieler
- ★ Electrovoice
- ★ Acousti-craft
- ★ Ampex
- ★ Shure
- ★ Wolensak
- ★ Calrad
- ★ General Electric
- ★ Etc.

For over 34 years we at Griffey Electric have served the South Bay area with the best products. Whether they were refrigerators, or numerous other items. Now with stereo equipment sweeping the country, we have the most complete Hi-Fi demonstration. We invite you to drop in and see the reproduction equipment by the nation's finest producers. Factory representatives to answer your questions and help solve equipment problems at no obligation.

MAGIC MIND

Webcor 3-Speed Hi-Fidelity Automatic Changer



Reg. \$57.50
Griffey's Price **\$26⁸⁸**

Complete with Cartridge, Needle and Plug-in Head

Brand New JENSEN

12-Inch Coaxial Hi-Fidelity Speaker



This Week Only **\$23⁸⁸**

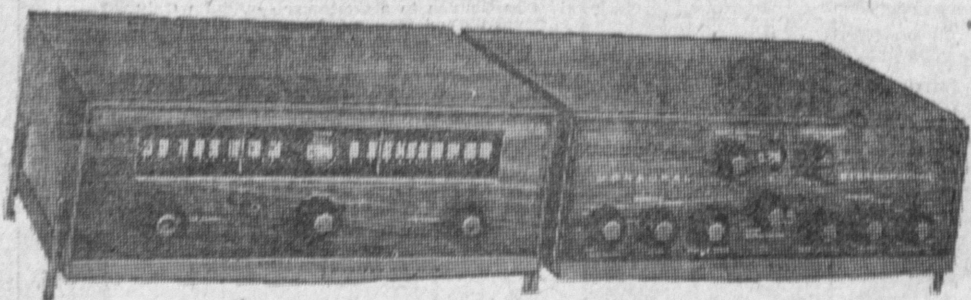
Brand New Acousti-Craft



M.F. madison fielding
Creators of Distinctive Audio Instruments

Madison Fielding AM-FM Stereophonic Tuner

Madison Fielding 40 Watt Stereophonic Amplifier



Two complete ultra-sensitive tuners on one compact chassis which can be used individually for AM or FM reception, or, with the turn of a switch, make BOTH AM and FM signals.

Two complete 20-Watt amplifiers, each with a fully integrated pre-amplifier section, are mounted on one brilliantly engineered chassis.

SPECIFICATIONS

F. M. SECTION

SENSITIVITY: 2 uv for 20 DB outlisting; Frequency Response: Uniform within 1 DB, 20 to 20,000 cycles; IF Bandwidth: 355 kc. at 3 db points, 420 kc at 6 db points. Detector Characteristics: Specially designed uniform response and noise-free, fully thermally stabilized and preceded by a full state of limiting. Stability: AFC for completely drift-free operation.

A. M. SECTION

SENSITIVITY: 15 uv per meter loop sensitivity, 3 uv with direct antenna connection. AVC in circuit. Separate tuned RF stage for maximum selectivity.

CONTROLS: AM Tuning, FM Tuning; Selector: AM, FM, Stereo; On-Off, Dual Level Controls, two cathode follower outputs used at all times, 11 tubes.

Price **\$149.95**

SPECIFICATIONS

POWER RESPONSE: Constant at 20 watts per section, 20 to 20,000 cycles plus or minus 1 db.

FREQUENCY RESPONSE: Uniform within .5 db, 20 to 20,000 cycles.

HUM AND NOISE: Down 55 db at full output in Phono or Tape-Head positions. Better than 25 db in high level positions.

CONTROLS: (Each Channel) Equalization: Infinitely variable with indicated settings for RIAA, LP, EUR, AES, Tape-Head; Loudness: variable contour type; Bass and Treble: plus or minus 20 db, at 20 and 20,000 cycles; Volume Control: concentric with loudness control; Power-Calibration: Calibrated in Peak Watts.

INPUTS: (each Channel) Two high level, one low level.

OUTPUTS: (each Channel) 4, 8, 16 ohm, speaker, and tape recorder monitoring.

CONTROLS: (Both Channels) Power: Master Volume Control; Selector: Monaural Pre-amp, Monaural Radio, Monaural Tape; Stereo Pre-Amp, Stereo Radio, Stereo Tape; 12 Tubes.

Price **\$169.95**

AMPEX STEREO

The Ampex Caprice is a precision instrument of full professional quality, designed for you by the same engineers who first developed the revolutionary Ampex Videotape Recorder which captures both sight and sound on magnetic tape... incorporating the same engineering skills used in designing the equipment on which the original sound for every long-playing disc is recorded.

The Caprice is equally at home on the patio, in the rumpus room, in a college dormitory, or at a church social. And no matter where you play it, its magic stereophonic capabilities will bring your listeners the tremendously exciting experience of re-creating the music with all its original depth and quality. At the touch of a button, the Caprice has the power to put you in front of a jazz combo in New Orleans, an a cappella choir in a great cathedral, or the world's finest symphony orchestra.

- Record Monaural or Stereo
- Record Sound on Sound
- Record Stereo Broadcasts
- Play Both 2 and 4 Track Tapes
- Regular, Long and Extra Long Tapes
- Automatic Stop at End of Reel



OTHER AMPEX MODELS ON DISPLAY

PHONE FRontier 6-3444

OPEN THURSDAY AND FRIDAY 'TIL 9:00 P. M.

SATURDAY 9.30 A.M. 'TIL 6 P.M.

