

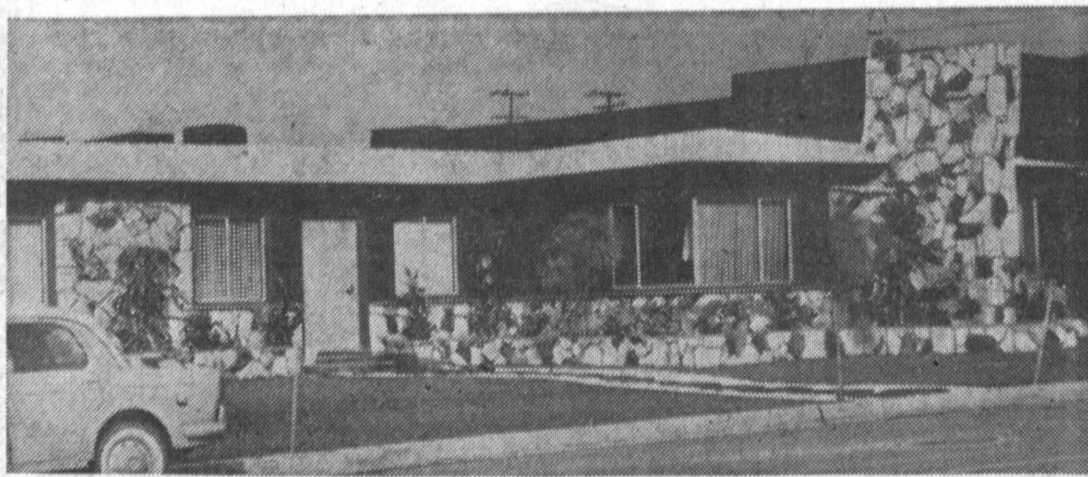
Harvey Plant in Oregon

Harvey Aluminum's reduction plant at The Dalles, Oregon, incorporates the latest and most efficient equipment and operating techniques. Capacity of this facility is more than 100,000,000 pounds of aluminum annually. Primary aluminum in pig, ingot and billet forms is shipped from Harvey's Oregon plant to the company's metalworking facilities in Torrance and to aluminum fabricators throughout the United States.

Economic Discussion Group Being Formed

Another Economic Discussion Group is being formed by the Chamber of Commerce-Committee on Economic Understanding, according to Chairman Hal Frenzt. For further details call Frenzt at FA 8-7370.

To buy, sell or trade, your best bet is a Press Classified Ad.



NEW OFFICES—Independent Building Materials Co. office building is finished inside and out with especially chosen redwood. It was carefully planned for the utmost comfort and efficiency of the office crew. The new plant is located at 535 Maple Ave.

Lumber Mill Joins Torrance Industry

One of the newest members to be welcomed to Torrance's industrial family is the Independent Building Materials Co., Inc., 525 Maple Avenue. William E. Upton, president of the wholesale building materials concern, opened his new offices last October. The modern administration building is a monument to the products sold by the concern and makes a permanent display of its stock. The exterior and interior are completely finished in redwood. The walls are surfaced in soft finished, curly redwood. The large, air-conditioned rooms are well planned for comfort and efficiency.

28-Acre Yard
Redwood—all sizes, grades and dimensions, are available at Independent Building Materials Co. for retailers, wholesalers and qualified industrial users. Shipments from the plant are made via rail, ship from Los Angeles harbor, truck and trailer, and local pickup and delivery.

The entire plant covers 28 acres, and is one of the most modern custom mills in the greater Los Angeles industrial area. A 15 car spur handles inbound and outbound shipments. A large mill building houses the 15 units of remanufacturing equipment. The mill is undergoing further modernization with new machinery replacements being installed in order to meet the heavy demand for Independent Building Materials products.

Directly adjacent to the mill, a large saw-filing room has been

erected. Nearby is the maintenance shop, grading chain and automatic stacker. Presently under construction is an all-steel warehouse facility for storage of dry stock. This warehouse, when completed, will have a capacity in excess of one million feet and is the first of several that will be built.

Experienced Personnel
The men who are responsible for the processing of more than 1/2 million feet of redwood through this plant daily are Glen Derbyshire, yard superintendent, and Jean Jones, mill superintendent. They oversee operation of the mill, three truck-and-trailer rigs, four single delivery trucks, seven units of mobile yard equipment and 75 operations department personnel.

They are also responsible for the disposal of all waste, including sawdust. Two sawdust trucks are operated for this purpose and all of it is sold to nurserymen in the South Bay area. No burning and no waste—everything, including the fall-down, is sold.

Upton has a hard-hitting, experienced team of lumbermen as executives in his organization. Ray Estes, vice-president and general manager, is well known in lumber circles and has been with Independent for several years. Don Jewett is the sales manager and has two able assistants, Joe Petrush and George Clyde Redinger. They are assisted by Edie Schuricht, bookkeeper, and Shellené Greene, receptionist.

Independent also services the

3 Major Steel Companies of U.S. Are Now in Torrance

Officials of Armo Steel Corporation were recent Torrance visitors to observe the plant and operations of the National Supply Company here. This was the first visit of Armo officers at the local plant since National became a subsidiary of Armo Steel Corporation ten months ago.

"Blue Iron" as National Supply

Gray, observed that the City of Torrance can now claim the distinction of having plants representing three of the major steel companies in the United States. These are U. S. Steel Corporation, Bethlehem Steel and Armo Steel Corporation.

Armo officials who visited the Torrance plant were R. L. Gray, Armo Steel president; L. T. Johnston, Armo Steel ex-

ecutive vice-president; and W. C. Higdon, Armo Steel vice-president. Guiding the Armo executives on their tour were A. W. McKinney, National Supply president and E. G. Unrath, National Supply vice-president.

Never fight sleep at the wheel of your car, surrender to it off the road, says the Automobile Club of Southern California.

RE THE BLUE IRON IS MADE



DISTINGUISHED VISITORS—National Supply Company president A. W. McKinney and vice-president E. G. Unrath joined the Armo officers for their first inspection tour. Here at the entrance to the machine shop, left to right, are W. C. Higdon, Armo Steel vice-president; E. G. Unrath, National Supply vice-

president; R. L. Gray, Armo Steel president; A. W. McKinney, National Supply president; L. T. Johnston, Armo Steel executive vice-president. "Blue Iron" is the term used for National Supply's oilwell drilling machinery. All of their machinery is easily identified by its bright blue color.

BELOND INDUSTRIES, Inc.

IS PROUD TO JOIN WITH
OLD AND NEW FRIENDS
IN TORRANCE FOR A BIGGER
AND BRIGHTER FUTURE!

We know that you'll like our new plant, and we know too that this association will be one of lasting pride and benefit to the community.

BELOND INDUSTRIES, Inc.

GROUND SPEED
DRIFT ANGLE
L DEGREES R

NAVY SELECTS RYAN C-W DOPPLER NAVIGATORS BUILT IN TORRANCE

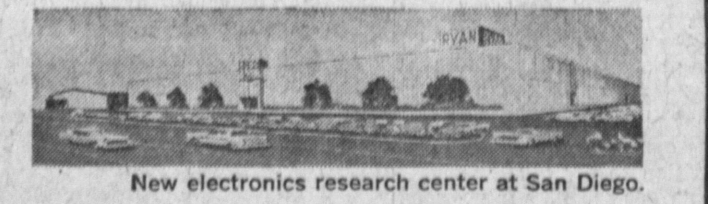
Six major types of Navy aircraft will be equipped with Ryan continuous-wave Doppler navigation systems under an initial \$20 million contract awarded to Ryan by the U.S. Navy. Pioneered by Ryan and the Navy, these new RYANAV systems tell pilots how to fly to any point in the world, with speed and precision, and tell them exactly where they are at all times enroute.

Produced in Torrance, Ryan navigators are the simplest, lightest, most compact and most reliable of their type.

Ryan's Torrance plant is also the home of the Ryan Firebee jet target drone—the jet drone most widely used by the armed forces (Air Force, Navy, Army and RCAF).



New electronics production facility at Torrance.



New electronics research center at San Diego.

Ryan's rapid growth in electronics is creating new opportunities for engineers and technicians

RYAN BUILDS BETTER

Ryan Aeronautical Company, Torrance, California

Committee Award to Be Presented at Chamber Dinner

A new award will make its debut at the annual Chamber of Commerce banquet, to be held March 4 at the Civic Auditorium.

The award will be made to the Chamber of Commerce committee which has demonstrated the finest over-all program, and will be titled "The President's Award."

In making the announcement President Fred W. Mill (National Supply) said that it is felt that this recognition will not only honor, in a small way, the dedicated efforts of a Chamber Committee, but also will spur the other committees to greater action.

Presentation will be in the form of a trophy which will be retained by the Committee Chairman of the victorious group, Mill added.

Stone & Myers Has Served Local Area 35 Years

During the past 35 years, Stone and Myers Mortuary, 1221 Engracia Ave., has rendered service with kindness to Torrance families.

One of the original establishments in Torrance, the mortuary was first located at 1732 Cabrillo. In 1928 they moved to their present location on Engracia. Six facing Torrance Blvd. to be used for parking and garages. The grounds have recently been re-landscaped and the building painted, keeping it one of the loveliest of the older buildings in town.

Stone and Myers Mortuary will continue to serve this community as it has since its founding.

J. C. Penney Co. Here by Autumn

One of the major tenants in the new Del Amo Center will be the recently signed J. C. Penney Co.

Penney's 70,000 square foot building has been designed by Welton Becket and Associates, and will be adjacent to the Broadways, Sears and other outstanding stores. Proposing an up-to-date, easy to shop facility, modern escalators will transport customers within the two-story \$900,000 structure.

Delivery and disposal service is to be handled by an underground truck tunnel serving all the center's tenants. A future 30,000 square foot addition is planned for the store, as this will be the only J. C. Penney store serving over a one-half million population center in the South Bay region. Completion is set for early fall of 1959.

Having experimented with the use of credit, J. C. Penney will initiate a complete credit plan in the new store. To be in full operation by early fall of 1959, this is a major departure from the cash basis J. C. Penney Co. has operated under for more than half a century.

30 MILLION FEET—Columns of stacked lumber run the length of the Independent Building Materials Company yard, 535 Maple Ave. The local firm is one of the largest redwood wholesale and remanufacturing firms in Southern California. It annually ships in excess of 30 million feet of lumber.

36 Years of Service

yesterday ...
today ...
tomorrow ...

As we pass the milestone that marks over thirty-six years of uninterrupted service to the people of Torrance and surrounding area, we assure you a continuance of the same business ideals, personal service and friendly counsel that has placed this establishment in its position of recognized leadership.

STONE & MYERS MORTUARY

1221 ENGRACIA AVENUE TORRANCE
Phone FA 8-1212

Service ... Sincerely and Impartially Rendered