

Using Telephone Session Held by Harbor YWCA

As part of the training program of the YWCA, the Harbor Area Association held a session on "Effective Use of the Telephone" Jan. 9 at the Headquarters Building, 437 West 9th St., San Pedro. Mrs. Bee Finne, lecturer-demonstrator of Pacific Telephone, conducted the session, suggesting steps toward improved efficiency and economy through correct usage.

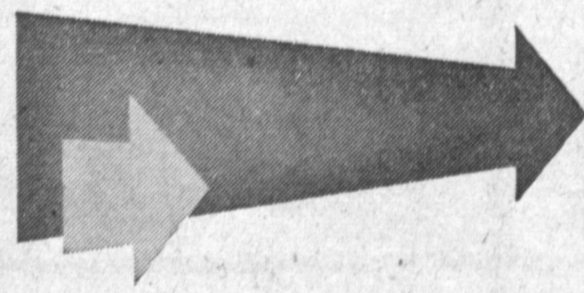
USE CLASSIFIED ADS!

HILLMAN

1959 4-DOOR SEDAN

NOW ONLY

\$1735.



at MANHATTAN MOTORS

This all-new 1959 Hillman has greater power, improved performance, longer engine life, improved gas economy, PLUS—

HILLMAN IS **"ACCEPTED"** "As America's Best Imported Car Today at This Price"

It's Time to Change to Hillman

MANHATTAN MOTORS

2301 SEPULVEDA BLVD.

PHONES FR 2-1141 FACULTY 1-2424

MANHATTAN BEACH



ELECTIONEERING—John Brentwood is trying to give a campaign speech as candidate for Torrance High School student body president, while his opponent, Diana Cook, gets a chuckle over his serious manner, during hotly-contested campus election campaign. Press Photo

Student Election at THS

Torrance High School students are busily campaigning this week for the student body and class officers' election to be held Jan. 20.

Running for student body president are John Brentwood and Diana Cook, while Judy Ahrendt and Carol Johnson are candidates for vice-president.

Others running for student body council positions are Nardell Claton, Mary Blount, Sally Mason, Betty Baker, Charlotte McComas, Peggy Neely, Sharon Clark, Dyann Davy, Judie Sherwood, Pat Travis, Walter Janoff, Dianne Wayt, Ken Pevic, Mike Walker, Carol Porterfield, Donna Thistle and Ron Vanduyck.

Diane Hunter, Joyce Wayt, Lynne Hyde, Jana Davey, Charlotte Percy, Paula Blankenship and Carol Stephens are candidates for Girls' League posts.

Running for Boys' League offices are Walter Janoff, Manfred Mainer, Tom Coleman, Berry McHugh, Tom Regdw and Jim Hester.

RELEASED FROM HOSPITAL
Robert Dean, of 2011 W. 180th St. was discharged from Torrance Memorial Hospital where he had undergone surgery.

Eye Expansion of Bag Plant

Expansion of the new Torrance plant of the West Virginia Pulp and Paper Co. was seen today in an annual report issued by President David L. Luke.

He said that the local plant, established several months ago for the manufacture of multi-wall shipping bags, would ultimately become a focal point for the production of grocery bags, supermarket checkout bags, and corrugated shipping containers for the West Coast market. Luke pointed out that while addition of new plans has pushed the company's sales, profits declined during the past year.

TORRANCE PRESS

Established April 15, 1949

Publication office at 1406 Cravens Ave., Torrance, California Plant at 20366 So. Hawthorne Blvd., Torrance, California.

Published Semi-Weekly, Thursday and Monday. Entered as second class matter, Oct. 8, 1957, at Post Office, Torrance, California, under act of March 3, 1879. Adjudicated a legal newspaper by Superior Court, Los Angeles County, Calif. Adjudicated Decree No. L. B. 23368, April 8, 1958.

Office: 1406 Cravens Avenue Torrance, California
Plant: 20366 S. Hawthorne Blvd. Torrance, California
Telephone: FA 1111-2345

W. R. Zarnas, Publisher
W. E. Kins, General Manager
Kurt Liepmann, Managing Editor

Subscription Rates
(Payable in advance) \$35 per Month
Local and Out-of-Town, per Year \$42.00

All manuscripts submitted at owner's risk. The Torrance Press can accept no responsibility for their return.

Have Your Eyes Examined Today CONTACT LENSES

that you can wear all day

No Appointment Necessary



MAKE 1ST PAYMENT JAN. 15.

**DR. M. M. SAKS
DR. R. A. VENDELAND**
OPTOMETRISTS

Open 9 to 5:30 Daily and Saturday

Friday Evening 'Til 9:00 P. M.

1304 EL PRADO

DOWNTOWN TORRANCE
Phone FA 0-0190

Bank Reports Earnings

California Bank enjoyed steady growth throughout the year, Frank L. King, president, has reported in a review of the bank's 1958 Annual Report. Before midyear, deposits had passed one billion dollars and have held well above that level since.

Net operating earnings were \$6,545,591, an all-time high, equal to \$4.21 per share on the 1,554,477 shares outstanding at the year end. This compares with \$5,976,027 in 1957, or \$3.85 per share on the 1,522,211 shares outstanding at the end of that year.

USE CLASSIFIED ADS

TV SERVICE CALLS

\$2.50 ???

DON'T BE HOOKED OR MISLED!

We could make a service call for \$2.50 — But chances are we'll find at least 4 small tubes out of order.

Legitimate TV service calls run \$4.50 and many times we have left a TV in excellent working order just by making a simple adjustment and no extra charges!

TRY TV STUDIO

US! 2223 Torrance Blvd.

FA 8-6856



LIBERTY APPLIANCE'S CLEARAWAY DAYS

Sale Starts Today—Thru Jan. 26th

Hi-Fidelity

ZENITH MAHOGANY CONSOLE WITH 4 SPEAKERS **\$238⁸⁸**
Regular \$369.95

Stereo Hi-Fi

ZENITH STEREO HI-FI WITH 3 SPEAKERS **\$138⁸⁸**
Regular \$189.95

ZENITH STEREO with AM-FM radio, 4-speed record changer, 6 speakers, slave unit. Beautiful Provincial Styling. Both units. Regular \$519.95. **\$388⁸⁸**

Television

PHILCO 21" TABLE MODEL **\$188⁸⁸**
Regular \$249.95

ZENITH 21" CONSOLE Mahogany or blond. Regular \$299.95. **\$238⁸⁸**

ZENITH LO-BOY MAHOGANY CONSOLE, Wood cabinet. Regular \$339.95. **\$268⁸⁸**

Freezers

NORGE 12 CUBIC FOOT FREEZER **\$238⁸⁸**
Regular \$319.95

Refrigerators

WHIRLPOOL REFRIGERATOR Deluxe Model, 14 cubic foot. Bottom freezer. Regular \$499.95. **\$358⁸⁸**

2-DOOR 12 CUBIC FOOT PHILCO with auto-defrost. Regular \$419.95. **\$288⁸⁸**

9 CUBIC FOOT PHILCO Cross-Top. Regular \$239.95. **\$188⁸⁸**

NORGE 2 DOOR with Auto Defrost. Regular \$519.95. **\$299⁹⁵**

Ranges

O'KEEFE & MERRITT Chrome top, clock, griddle. Regular \$239.95. **\$168⁸⁸**

NORGE 36" Wide Gas Range with 24" oven. Regular \$299.95. **\$168⁸⁸**

Laundry Values

Norge 2 Cycle Completely Automatic Washer with Lint Filter. Regular \$249.95. **\$188⁸⁸**

Norge '59 Deluxe 4-Way Gas Dryer. Regular \$249.95. **\$188⁸⁸**

Philco—Bendix Washer-Dryer Combination. Regular \$459.95. **\$388⁸⁸**

Philco—Bendix High Frequency Washer. Handles 7 sheets. Lint filter, 2 Cycle. Regular \$319.95. **\$268⁸⁸**

Floor Sample **\$218.88**

Maytag Automatic Washer Floor Model. Regular \$239.95. **\$168⁸⁸**

Hotpoint All Porcelain Washer 2 Cycle Deluxe. One Only Floor Sample. Regular \$359.95. **\$198⁸⁸**

LIBERTY APPLIANCES

DISCOUNT PRICES . . . WITH SERVICE AFTER SALE

3445 Torrance Blvd. FA 8-5410

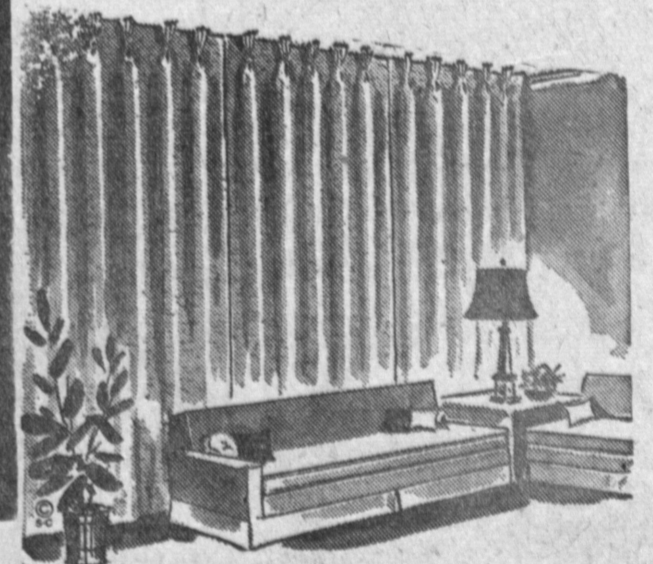
In the big Paramount Building Center—Just West of Civic Center—Open 6 days a week, Friday 'til 9

NO MONEY DOWN . . . EASY TERMS

LIBERTY IS THE LARGEST EXCLUSIVE APPLIANCE DEALER IN THIS AREA

NO MONEY DOWN MONTHS TO PAY!

READ THIS IF YOU ARE INTERESTED IN DRAPERIES



Custom Draperies

- 10 FEET WIDE (6 Widths)
- CEILING TO FLOOR (Up to 99 Inches)
- CUSTOM MEASURED IN YOUR HOME
- COMPLETELY INSTALLED With Heavy Duty Ball Bearing TRAVERSE RODS!
- DECORATOR FABRICS—Custom Finished—Double Fullness—4 Inches Between Pleats.
- 1 YEAR GUARANTEE AGAINST FADING!

Everything Listed Above Is Yours For Only

\$59⁶⁸

Complete

Other Sizes Proportionately Low Priced!

BUDGET TERMS

HOLIDAY FURNITURE CO.

Mon. & Fri., 10 to 9
Tues., Wed., Thurs., 10 to 7
Sat., 10 to 6. Closed Sunday

4100 W. Imperial Hwy., Hawthorne

OR 8-6004 — OR 1-5153