

Hines Selects Local Eateries

The Palms and the Smith Bros. Fish Shanty in Torrance have received national recognition in the 1959 edition of "Duncan Hines' Adventures in Good Eating" just off the press. They are the only restaurants in the Torrance area included among the 3,500 selected restaurants "Recommended by Duncan Hines" out of a total one-third million eating places in North America.

You Can Play it at Sight . . . without Lessons!

Magnus
Electric
CHORD ORGAN



A FULL RANGE HIGH FIDELITY MUSICAL INSTRUMENT...\$129.95

Pop up parties . . . enrich your family life . . . AMAZE your friends by playing this magnificent high fidelity musical instrument AT SIGHT . . . without lessons! Let us prove it to you with a two-minute demonstration.

RAY'S MUSIC

1312 Sartori

FA 8-6247

Anona Council 16 Holds Election

Anona Council 16, sponsored by Centinela Council 211, Degree of Pocahontas held election of officers at the regular November meeting of the council at the Redmen-Pocahontas Hall, 501 South Greville Ave., Inglewood. Girls elected for the coming term include Anona, Christine Archer; Minéwa, Gerry Moore; Mishinewa, Jackie Strosnider; Wacunda, Lorraine Rogers; Chief of Tom-Tom, Sherry Brown; Neta, Carol Moore; Leska, Doranne Fredrickson; Wice,

Sharon Phillips; Right Tayjito, Dianne Fredrickson; Left Tayjito, Linda Diggs; Four Arrows, Carol Unsworth; Paula Archer, Penny Russel, Linda Elce. A joint formal installation of officers with the Hiawath's will be held at the Redmen-Pocahontas Hall Nov. 29, at 7 p.m. The public is invited. Mrs. Vonnie Rounds is deputy for the Anona Council with Doreen Kemp, Beatrice Moore and Helen Patmore as advisors. All are members of Centinela Council 211.

Torrance Press Classified
FA 8-2345

Aircraft Workers
YOU CAN BUY
FURNITURE and APPLIANCES
FOR
NO CASH DOWN
McMAHAN'S FURNITURE STORES
1306 SARTORI FA. 8-1252 TORRANCE

School Paper Name Changed To Space Era

Students at Crenshaw School are getting the up-to-the-minute news these days in their up-to-the-minute students newspaper, the "Satellite Express."

Students decided that the paper's old name, the "Crenshaw Junior Times," sounded too stodgy, so they voted on a new one and the "Satellite Express," a jet-age name suggested by Chick Severson, was the winner.

The school's newspaper, with news of all the doings, comes out every two weeks. Joan Kurz, editor, is assisted by reporters in each of the classrooms. Linda Reynolds and Sarah Waxman have served as assistant editors.

Smart drivers will watch traffic as far up the road as possible, not just the car ahead, says E. R. Klamm, accident prevention director, Allstate Insurance Companies. Spotting hazards at a distance means more time to stop or steer clear of an accident.

Tips to Avoid Eye Strain Given by Health Officer

Suggestions to television fans to enable them to avoid eye strain have been advanced by the American Medical Association and other organizations concerned with the maintenance of good sight. "Television itself does not produce eye strain but, since it requires "all the components of the visual act," many people complain of eye fatigue after a short period. Those persons with eye defects are particularly susceptible to this fatigue and wearers of bi-focal glasses may even find it necessary to have special lenses prescribed for the proper distance.

To aid in the elimination of eye strain and increase enjoyment of the program, the following suggestions have been offered:

1. It is usually better to have a large screen rather than a small one because it allows for clearer vision at greater distance and gives a larger visual angle.
2. The nearer the screen is viewed head-on, the better. Too much of an angle produces distortion and makes co-ordination difficult.
3. A distance of 10 feet or more away from the screen, would, in general, be better than a shorter distance provided the size of the room would permit.
4. Avoid both intense darkness and bright lights in the room. Soft, indirect lighting is preferable.
5. Sun glasses should not be worn.
6. There is no definite time limit for watching television but excessively long periods of gazing at the screen should be avoided.
7. In case of eye discomfort, have the eyes examined by a competent specialist and follow his advice.

There are a number of excellent educational programs on television for children. It is well for parents to sit in on them long enough to see what character of entertainment is being shown. "Televieving is not the thing for children to do when the sun is shining and they should be outdoors, but it can provide good entertainment during the early evening hours as well as be tremendously informative as well.

A pamphlet on correct television viewing will be mailed to anyone who sends a card of request to the Division of Public Health Education, Los Angeles County Health Department.

Special Merchants' Lunch 85¢
Bowl-O-Drome
220th at Western

LAWSON'S Gift Suggestions

FULL TRADE-IN ALLOWANCE

On your present Diamond Ring No Matter Where or When Purchased

30 DAY MONEY BACK GUARANTEE

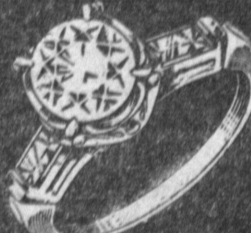
DIAMONDS

for a Christmas... she'll never forget



"PERFECT 500 SERIES"

Featuring Your Choice of a magnificent Round Marquise or Emerald-Cut Diamond



Round-Cut



Emerald-Cut



Marquise-Cut

Your Choice \$500

DIAMONDS IMPORTED DIRECT FROM EUROPE!

AMERICA'S MOST BEAUTIFUL DIAMOND RINGS



Perfect "100" 6 Diamond Set Both for \$100 \$2 Weekly



Perfect "200" 8 Diamond Set Both for \$200 \$4 Weekly



Perfect "300" 10 Diamond Set Both for \$300 \$6 Weekly



For Him! DIAMOND RING Reg. \$250 \$150



\$3 Weekly 1 CARAT 27 Diamonds Reg. \$500 \$395 Easy Terms



10 Diamond Bridal Pair Reg. \$250 Both for \$150 \$3 Weekly



MR. & MRS. 10 Diamonds Wedding Rings Your Choice \$69.50



15 DIAMOND THREESOME Reg. \$400 All 3 for \$275 \$15.50 Weekly

Lawson's
1301 Sartori Ave. Torrance
Sartori at El Prado
Open Evenings 'Til Christmas
Phone FA 8-4312

TAKE A YEAR TO PAY!

ELGIN 40 Diamonds 14K Gold Reg. \$495 Easy Terms \$329

ELGIN 20 Diamonds 14K Gold Reg. \$200 \$139 \$3 Weekly

18 Diamond Heart Pendant Reg. \$150 \$99 \$2 Weekly

Only modern Gas ranges offer you these 3 FEATURES

The new Gas ranges look like pure pleasure! They cook like it, too . . . for the finest in today's Gas ranges come equipped with three wonderful features: 1) True top burner heat control. 2) Oven meat thermometer. 3) Rotary barbecue. See a demonstration of these features—and many others—at your Gas range dealer or Gas Company showrooms.



1. TOP BURNER HEAT CONTROL makes any pan automatic . . . ends pot-watching! All you do is set the thermostat. The "burner with a brain" takes over. The sensing element takes the pan's temperature constantly . . . turns the flame up or down as needed to maintain the exact level of heat you desire. No boil-overs . . . no scorching!



Automatic Gas range illustrated is the new WEDGEWOOD-HOLLY.

2. OVEN MEAT THERMOMETER guarantees meat cooked to your order—rare, medium or well-done. Just set the meat thermometer . . . insert it in your roast . . . forget it. When your roast reaches desired doneness, oven shuts off automatically.

3. ROTARY BARBECUE lets you enjoy tender, juicy meat with delicious char-type flavor. No fuss or muss because smoke and soot disappear in the blue gas flame. And as with broiling, Gas lets you barbecue with the broiler door closed.

You can win! FREE GROCERIES FOR A FAMILY FOR ONE FULL YEAR! No contest to enter! Nothing to guess! Nothing to buy! Just visit your Gas appliance dealer—write your name on a registration form. Grand prize winner will receive free groceries for a family for one full year. 185 other winners will receive beautiful outdoor Gas lights for yards or patios—including normal free installation! Every entrant receives a free jar opener! Important! You'll enjoy watching a demonstration of top burner heat control while at your dealer's.

P.S. See the \$7.98-value Regal fry pan your dealer will sell you for only \$2.98 while they last!

For better living at lower cost
Southern California Cooks with Modern GAS
SOUTHERN CALIFORNIA GAS COMPANY

For modern Gas service beyond our system, see your L-P Gas dealer.