



# SHOPPERS SELLS 'ONLY CHOICE BEEF'

## AT THE LOWEST PRICES YOU'VE EVER SEEN!



At Shoppers our primary objective is to select for you ONLY the very best steers of those graded U.S.D.A. "Choice." Not only do we consider the age, type and feeding that the rancher controls in raising steers, the strict requirements demanded by the U.S. Dept. of Agriculture, but we also require the most desirable weights, proper amounts and distribution of fat and the right texture of the meat. THESE ARE THE FACTORS WHICH CONTROL THE TENDERNESS AND FLAVOR OF THE BEEF YOU BUY! When you select beef for your dinner table, always choose Shoppers.

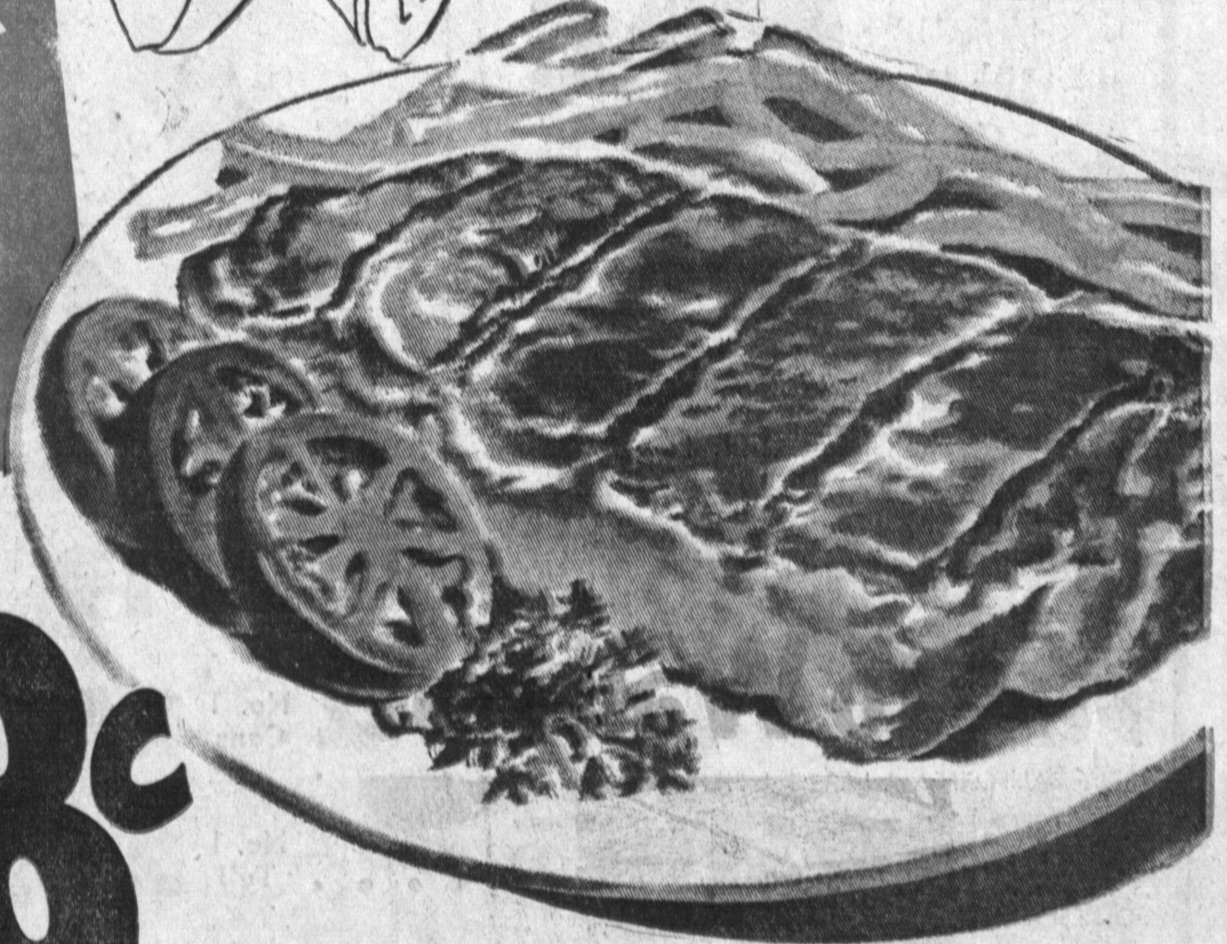
"TOP OF THE CHOICE" U.S. GOVT GRADED "CHOICE" BEEF



110 E. CARSON at MAIN

**Shoppers Meat Guarantee**  
Compare quality... compare prices... compare the way Shoppers meat is trimmed of excess fat and bone before weighing. Then try it. If you are not completely satisfied, Shoppers will refund your money. Through the years the confidence in Shoppers meat has grown to such a tremendous degree we cheerfully make this offer.

# STEAK SALE!



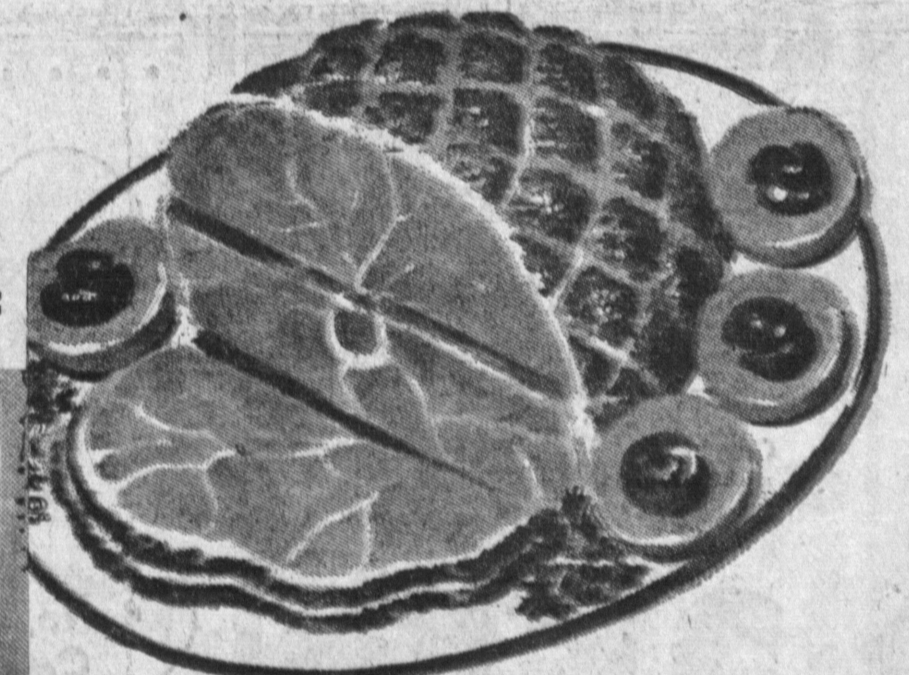
Fresh Dressed Whole **Stewing HENS** lb **29c**

Genuine Spring **Legs of Lamb** L **69c**

USDA Choice Boneless N. Y. Cut Top **Sirloin STEAKS** L **\$1.09**

U.S.D.A. "CHOICE" **Porterhouse T-BONE Sirloin CLUB** Full Cut LB **98c**

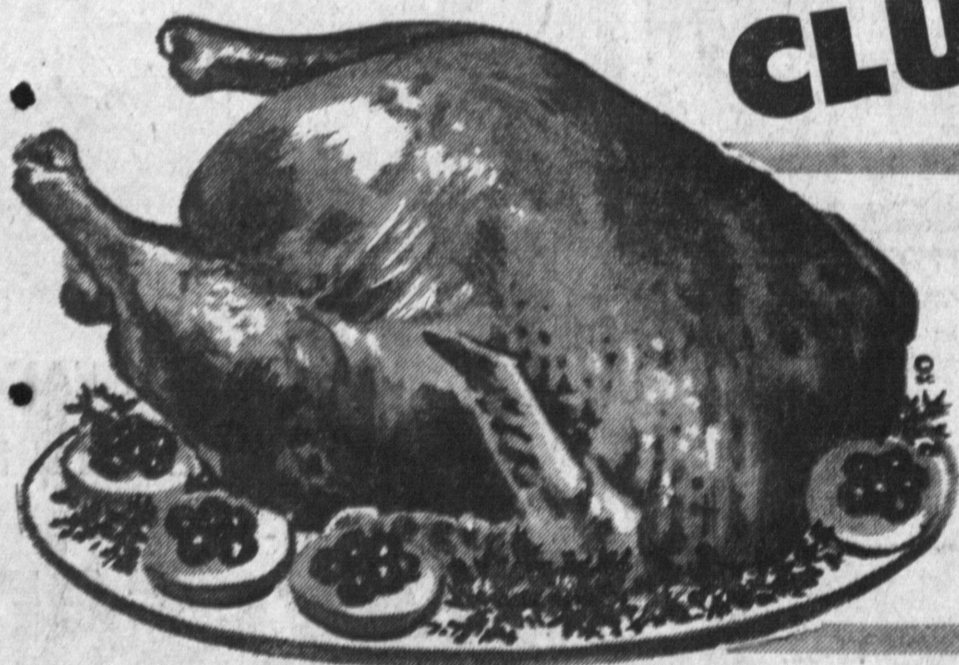
Shoppers **Pork Sausage** 3 lbs **99c**



Tender • Tasty • Smoked

## Hams

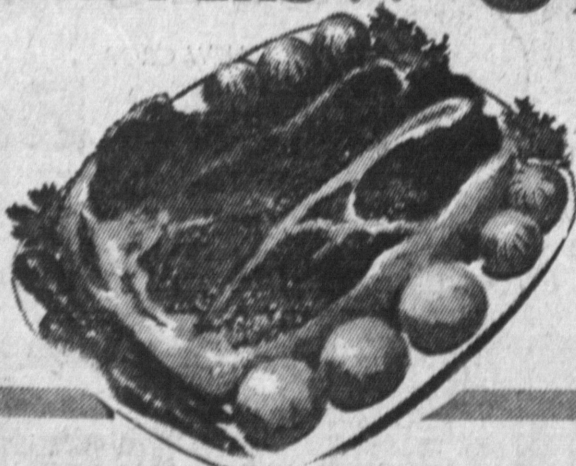
Shank Half As Cut **Lb 49c**



Broad-Breasted Eviscerated-Tom Oven-Ready **Turkeys** **35c** Lb  
Hen Turkeys lb **39c**

Tasty, Red **SNAPPERS** lb **39c**

Northern Steaks of **HALIBUT** lb **49c** U.S.D.A. "Choice" **Swiss Steak** lb **59c**



### POT ROASTS

U.S.D.A. "CHOICE" **CHUCK BEEF** Lb. **39c**

USDA Choice **RIB STEAKS** Lb **89c**

MADE FRESH EVERY HOUR **GROUND BEEF** 3 lbs **\$1.39**

LEAN EASTERN **SLICED BACON** Hickory Smoked Lb **49c**

GENUINE LONG ISLAND **Ducklings** Lb **49c**  
Serve with Your Favorite Dressing



LEAN • DELICIOUS • SHOULDER **PORK ROAST....** Lb **35c**

Lean, First Cut **PORK CHOPS** lb. **59c**  
Milk Fed **LEGS OF VEAL** lb. **49c**  
Milk Fed **VEAL CHOPS** lb. **49c**  
Cudahy-Rex, Pure **LARD** 1-lb. Ctn. **19c**  
Fresh Daily **TRIPE** lb. **15c**